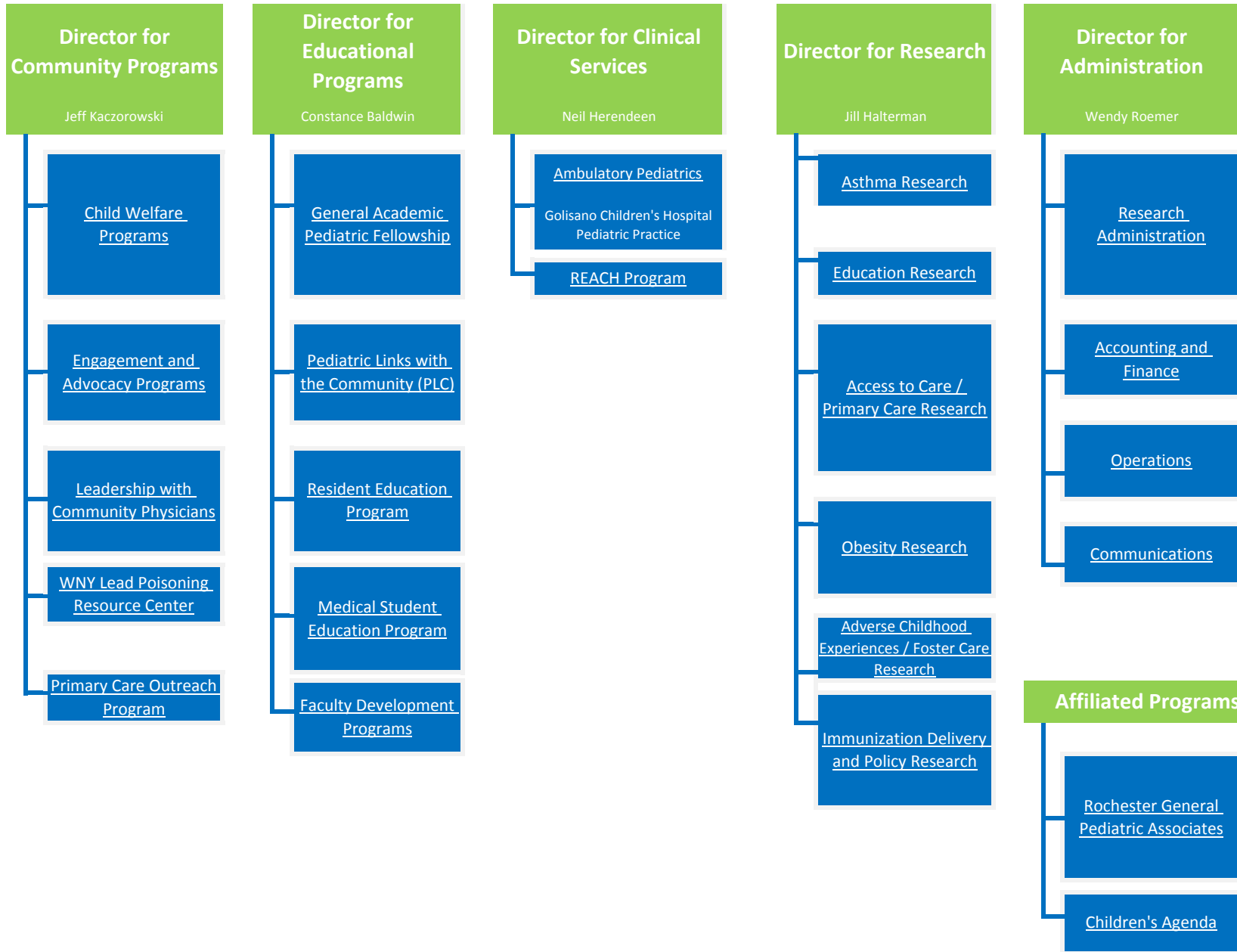


Interim Division Chief

Dr. Jill Halterman



Director for Community Programs

Kaczorowski

Child Welfare Programs

Jee, Conn (Fellow)

REACH—Lenane, Salisbury, Murray

Engagement and Advocacy Programs

PLC—Kaczorowski, Aligne, Tipton, Tu

Children's Agenda—Kaczoroski

Leadership with Community & National Organizations

GR-PBRN—S Schaffer, C Rand

AAP—Kaczorowski

WNY Lead Poisoning Resource Center – Rochester Office

Schaffer, Becker

Primary Care Outreach Program

P Szilagyi, Gallivan

Director for Educational Programs

Baldwin

AGP Fellowship

Baldwin, Rand, Conn (Fellow), Frey (Fellow), Jones (Fellow), Rosen-Carole (Fellow)

PLC

Kaczorowski, Aligne, Tipton, Tu, Jenks

Resident Education

Baldwin
Brown

Medical Student Education

Pediatric Interest Group—Jee

Faculty Development Programs

CTSI—Baldwin

Director for Clinical Services

Herendeen

GCH Pediatric Practice (See GCHPP Org Chart)

Herendeen
Wojtesta (Admin)
Maness

REACH Program

Lenane
Wojtesta (Admin)
Salisbury

Affiliated Programs

RGPA

Denk
Campbell
Garfunkel
Howard

Children's Agenda

Kaczorowski

Director for Research

Halterman

Asthma Research

Halterman (PI)
Fagnano, Tremblay
Blaakman, Tajon
Holderness, Gillett, Wiesenthal, Blumkin, Goldman, Thorsness, Holman, Collins, Noomani, Blauvelt, Frey (Fellow)

Educational Research

Baldwin, Garfunkel
Kaczorowski, Nazarian

Access to Care/Primary Care

Campbell, Hoilette, Howard, Kaczorowski, Paradis, Rand, Schaffer (PI),

Obesity Research

Cook (PI), DiBitto, Blumkin

Adverse Childhood Experiences/Foster Care

Jee (PI), Conn (Fellow)

Immunization Delivery & Policy Research

Rand (PI)
Schaffer(PI), Eagan
Vincelli, Blumkin

Director for Administration

Roemer

Research Administration

Pre-Award—Roemer, Gilardoni

Post-Award—Roemer, St. Germaine

Core Research Support—Blumkin, Gilardoni, Roemer, St. Germaine

Accounting & Finance

St. Germaine, Roemer

Operations

Roemer
Gilardoni

Communications

Internal: Newsletter/Website—Gilardoni

External: Development/PR—Roemer