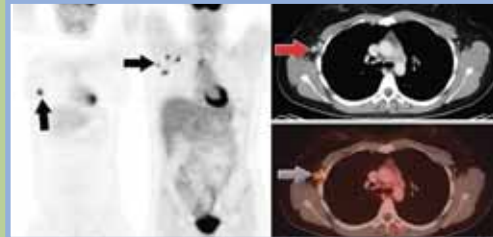
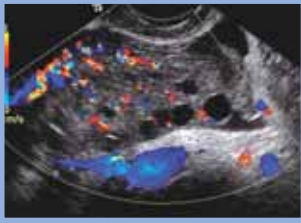


Department of Imaging Sciences presents

# INFORMATICS...

## The Foundation of the Digital Healthcare Enterprise



### PRIMARY FOCI:

*The do's and don'ts of how to prepare an RFP, implement and integrate RIS, PACS, CPOE, EHR and RHIO*

- Informatics
- Advanced Visualization
- Storage and Storage Management
- Ergonomics
- Re-engineering the Healthcare Enterprise
- Ask the Experts Panel
- Risk Management
- Communications Issues

**PACS**  
**2007**

**March 20-23, 2007**

The Westin Riverwalk, San Antonio, Texas

VISIT: [www.urmc.rochester.edu/pacs2007](http://www.urmc.rochester.edu/pacs2007)

or call 585-275-4392

Sponsored by:

UNIVERSITY OF  
**ROCHESTER**  
SCHOOL OF MEDICINE & DENTISTRY  
Office of Continuing Professional Education

## Conference Description

The Department of Imaging Sciences of the University of Rochester School of Medicine and Dentistry is pleased to invite you to attend its 7th Annual PACS Conference, *"Informatics...The Foundation of the Digital Healthcare Enterprise."* This comprehensive four-day conference will be held March 20-23, 2007 at The Westin Riverwalk Hotel in San Antonio, Texas.

This year's conference will focus on the "nuts and bolts" and "do and don'ts" of how to implement and integrate the multitude of clinical information systems (data and images) into a cohesive and seamless digital healthcare enterprise for institutions with minimal information technology (IT) and medical informatics support.

PACS 2007 will emphasize the importance of interoperability between diverse information systems and looking outwardly when implementing an information system – how it will impact the entire healthcare system rather than just a single clinical area. Five Practicum Sessions will provide the foundation for understanding the more advanced topics to be presented later in the conference. The Practicum has been updated to present valuable current information to the more experienced in the field.

New at PACS 2007 – focused sessions on Informatics, Advanced Visualization and Storage will conclude with an "Ask the Experts" panel where attendees have an opportunity to get answers to all of their questions. Preferred technical presentations by vendors will be included in the focused sessions.

Two separate learning tracks have been added in the afternoon allowing attendees to select the lectures that will most benefit their learning needs. Track A will discuss implementing RIS, PACS, CPOE, EHR and communication methodology in the digital environment. Track B will discuss the impact the digital environment has on various clinical specialties and areas with respect to workflow, HL7 and DICOM standards, integration and interoperability with other clinical systems, requirement for the physical facility, infrastructure, information flow, visualization and storage.

Other topics will focus on risk management from a healthcare and IT perspective, image perception, RHIO's and the economic effects of ergonomics.

Attendees will have ample time for hands-on opportunities of working with and viewing the technical offerings of more than 50 leading exhibitors in the digital healthcare market.

Business casual attire is recommended for PACS 2007, a conference that is well known for its relaxed, but intense learning environment.

## Who Should Attend

PACS 2007 is designed for:

- Radiologists, cardiologists and other physicians who are considering implementing digital imaging into their practices and need to acquire a basic understanding of medical informatics.
- Physicians already working in a digital environment that need to learn the latest technologies and practices that improve productivity and streamline workflow.
- PACS Administrators and Trainers; Radiology and Cardiology Administrators; Radiology Technologists, Imaging Managers, IS/IT Managers and staff who need to understand re-engineered clinical workflow and functional requirements to operate efficiently in a digital environment.
- Healthcare professionals in the process of implementing or upgrading the RIS, PACS, CPOE and EHR will benefit from this conference.
- Healthcare CEOs, CFOs, CIOs and other administrators who need to understand the impact and integration requirements of managing images and data in a digital environment as well as the economic and risk management factors associated with implementing and operating an integrated healthcare enterprise.

## Certification

The University of Rochester School of Medicine and Dentistry is accredited by the Accreditation Council for Continuing Medical Education to provide continuing medical education for physicians.

The University of Rochester School of Medicine and Dentistry designates this educational activity for a maximum of 25.75 AMA PRA Category 1 credits™. Physicians should only claim credit commensurate with the extent of their participation in the activity.

**Other credit:** This program is approved by ASRT for 23.50 Category A CE credits.

## Needs Assessment

With the continued emergence of clinical specialties other than radiology implementing digital healthcare information and management systems, it has become apparent that experiences learned in radiology can be used advantageously as other clinical specialties begin their implementation process. The PACS 2007 Program Committee considered the opinions of nationally-recognized experts, feedback from attendees at PACS 2006 and reviewed current literature to develop the framework for this four-day educational program.

A variety of educational methodologies will be used to accomplish the conference goals. The program offers didactic lectures, interactive learning tracks, "Ask the Expert" panels, Question & Answer sessions and "hands-on" with operational systems similar to those used in the healthcare environment. The objectives of PACS 2007 are to ensure that attendees will:

- Understand the importance of providing integrated electronic delivery of clinical images and data anywhere, at anytime to any authorized person.
- Understand how the digital healthcare information and management environment will improve patient care while reducing costly errors.
- Be kept abreast of advancing technologies in the application of digital imaging and information management systems for the healthcare enterprise.

## IMPORTANT DATES

*Women's Health and  
Imaging 2008*

**January 28-30, 2008**

**PACS 2008**

**March 25-28, 2008**

## Course Objectives

At the conclusion of this conference, attendees should be able to:

- Understand the importance of open standards, HL7 and basic DICOM in the implementation of the digital healthcare environment.
- Understand the basic knowledge necessary to initiate the implementation of RIS, PACS, CPOE and EHR.
- Explain the technology, workflow and medical informatics requirements to transition from a paper and film based environment to a digital environment.
- Discuss how advanced visualization techniques will impact the digital healthcare environment and improve patient care.
- Explain the unique risks and communication issues when operating in a digital versus paper and film based environment.
- Explain what RHIO is and how it impacts the EHR.
- Understand financial and operational models for determining the total cost of ownership of storage and ensuring the availability of stored information at all times.
- Describe why changes are necessary in the workplace environment and personal behavior to maximize the benefits of transitioning to paperless and film-less environment.
- Discuss the essential security requirements and unique risks associated with the Digital Healthcare Enterprise.

## PACS 2007 Program Committee

**Edward M. Smith, ScD, FACNP**  
**Paul J. Chang, MD, FSIM**  
**Steven C. Horii, MD, FACR, FSIM**  
**John S. Koller**

**Kevin W. McEnery, MD**  
**David L. Waldman, MD, PhD**  
**David L. Weiss, MD**

## University of Rochester Faculty

**Conference Director**  
**Edward M. Smith, ScD, FACNP**  
 Professor of Imaging Sciences

**Spencer L. Studwell, Esq.**  
 Sr. Associate General Counsel, Director of Risk Management

## Guest Faculty

**Hugh Bettesworth**  
 Senior Product Manager  
 Siemens Molecular Imaging, Ltd.

**Paul J. Chang, MD, FSIM**  
 Vice-Chairman, Radiology Informatics  
 Medical Director, Pathology Informatics  
 University of Chicago Pritzker School of Medicine  
 Medical Director, Enterprise Imaging  
 University of Chicago Hospitals

**Alan Hedge, PhD, CPE**  
 Professor of Design & Environmental  
 Analysis, Cornell University

**Steven C. Horii, MD, FACR, FSIM**  
 Professor of Radiology  
 Clinical Director, Medical Informatics  
 University of Pennsylvania Medical Center

**Kris S. Knight, JD**  
 Senior Marketing Manager,  
 Product Security  
 Philips Medical Systems

**John S. Koller**  
 President, KAI Consulting, Inc.

**Dennis Martin**  
 President, Demartek

**Kevin W. McEnery, MD**  
 Associate Professor  
 US M.D. Anderson Cancer Center

**Terry Michaelson**  
 Director, Technical Systems  
 Radiation Medicine Program  
 The Princess Margaret Hospital

**Robert E. Miller, MD**  
 Associate Professor of Pathology and  
 Biomedical Engineering  
 Director, Pathology Informatics Division  
 Johns Hopkins University

**Herman Oosterwijk, MS, MBA**  
 President, OTech, Inc.

**Jonathan Pavlicek**  
 Cardiology Project Manager  
 Banner Health Systems

**Donald W. Rucker, MD**  
 Vice President and Chief Medical Officer  
 Siemens Medical Solutions

**J. Neal Rutledge, MD**  
 Adjunct Professor of Psychology  
 University of Texas at Austin  
 Medical Director for Neuroradiology  
 Seton Healthcare Network  
 Austin Radiological Association

**Eliot Siegel, MD**  
 Professor of Radiology  
 VA Maryland Health Care System

**David L. Weiss, MD**  
 Clinical Head of Imaging Informatics  
 Geisinger Medical Center

**Gary J. Wendt, MD, MBA**  
 Vice Chair of Informatics  
 Associate Professor of Radiology  
 University of Wisconsin - Madison

**Bob Withers**  
 President, BWA, Inc.

## Faculty

**Mary L. Thomas, RT(R)(MR)**  
 Radiology IT Applications/Operation Manager

**David L. Waldman, MD, PhD**  
 Professor and Chair of Imaging Sciences

## Satellite Events

DATE	EVENT
Sun, March 18 9:00am-4:30pm	Clinical Refresher Course for PACS Certification
Sun, March 18 9:00am-4:30pm	IT Refresher Course for PACS Certification
Mon, March 19 9:00am-4:30pm	System Administration Refresher Course for PACS Administration
Mon, March 19 9:00am-4:30pm	DICOM/HL7 Refresher Course for PACS Certification
Mon, March 19 4:00pm-6:30pm	How EHR will Increase Revenue in a PACS Environment: An Expert Panel
Wed, March 21 5:45pm-7:15pm	Minimizing the Cost and Risk of Storage Management and Disaster Recovery
Wed, March 21 6:00pm-7:00pm	PARCA 3rd Annual Meeting

For event details visit: [www.urmc.rochester.edu/pacs2007/satellite\\_events.html](http://www.urmc.rochester.edu/pacs2007/satellite_events.html)

# Program

All lectures will be held in the Navarro Ballroom. Tracks A and B will be held in either the Navarro Ballroom or Camino Real Room on the Lobby Level.

## TUESDAY, MARCH 20, 2007

7:30am **Registration**

### SESSION 1: Practicum 1 Moderator: Steven C. Hori, MD

- 9:00am **Welcome and Introduction**  
*Edward M. Smith, ScD*
- 9:10am **Contemporary Issues in Digital Healthcare Information and Management Systems (DHIMS)**  
*Steven C. Hori, MD*
- 9:40am **Integration Standards to Optimize Workflow**  
*Herman Oosterwijk, MS*
- 10:30am **Infrastructure – The Foundation of DHIMS**  
*John S. Koller*
- 11:00am **Technical Exhibits Open**
- 11:20am **Riverwalk Buffet Lunch**  
Supported by GE Healthcare

### SESSION 2: Practicum 2 Moderator: John S. Koller

- 12:50pm **Functional Requirements of the Information and Visualization Management Components of DHIMS**  
*David L. Weiss, MD*
- 1:40pm **Storage Requirements for DHIMS**  
*Dennis Martin*
- 2:30pm **Maintaining the Integrity of DICOM Objects and Data Migration**  
*Steven C. Hori, MD*
- 3:00pm **Break**  
Supported by IBM Healthcare

### SESSION 3: Track A: Implementing RIS and PACS Moderator: David L. Weiss, MD Navarro Ballroom

- 3:30pm **Integrating Modalities, HIS, RIS and PACS**  
*Edward M. Smith, ScD*
- 4:00pm **Implementation and Functional Requirements of the RIS**  
*Herman Oosterwijk, MS*

- 4:30pm **Implementing PACS – Evaluating, Planning, RFP Development and Vendor Selection**  
*Edward M. Smith, ScD*
- 5:20pm **Q&A**
- 5:30pm **Adjourn**

### SESSION 4: Track B: Impact of Digital Environment on Clinical Specialties, Part 1 Moderator: Eliot Siegel, MD Camino Real Room, Lobby Level

- 3:30pm **Ultrasound**  
*Steven C. Hori, MD*
- 4:00pm **Nuclear Medicine**  
*Gary J. Wendt, MD*
- 4:30pm **Radiation Oncology**  
*Terry Michaelson*
- 5:20pm **Q&A**
- 5:30pm **Adjourn**
- 5:30pm **Meet the Exhibitors and Welcome Reception**  
Supported by Philips Medical Systems

## WEDNESDAY, MARCH 21, 2007

7:00am **Alamo City Breakfast**  
Supported by Siemens Medical Solutions USA

### SESSION 5: Practicum 3 Moderator: Kevin W. McEnergy, MD

- 7:30am **Contemporary Approaches to Reporting**  
*David L. Weiss, MD*
- 8:20am **Optimizing Productivity by Maximizing Information Throughput Towards a Paperless Environment**  
*Paul J. Chang, MD*
- 8:50am **Economic Impact of Ergonomics Resulting from Minimizing Musculoskeletal Injuries**  
*Alan Hedge, PhD*
- 9:40am **Break**  
Supported by IBM Healthcare

### SESSION 6: PRACTICUM 4 Moderator: Gary J. Wendt, MD

- 10:10am **ABC's of Security for a Digital Environment**  
*Bob C. Withers*

- 11:00am **Communication Results – New Workflow Models**  
*Paul J. Chang, MD*
- 11:30am **Image Perception**  
*J. Neal Rutledge, MD*
- 12:00pm **Riverwalk Buffet Lunch**  
Supported by GE Healthcare

### SESSION 7: PRACTICUM 5 Moderator: Paul J. Chang, MD

- 1:30pm **Planning for Down Time**  
*Steven C. Hori, MD*
- 2:00pm **RHIO's What are They?**  
*Donald W. Rucker, MD*
- 2:30pm **Re-engineering the Radiologist for an Electronic World**  
*Paul J. Chang, MD*
- 3:00pm **Break**  
Supported by IBM Healthcare

### SESSION 8: TRACK A: IMPLEMENTING EHR AND CPOE Moderator: J. Neal Rutledge, MD Navarro Ballroom

- 3:30pm **Ensuring Interoperability and Systems Integration**  
*Kevin W. McEnergy, MD*
- 4:00pm **Implementation and the Functional Requirements of a CPOE**  
*Donald W. Rucker, MD*
- 4:40pm **Implementation and the Functional Requirements of an EHR**  
*Kevin W. McEnergy, MD*
- 5:20pm **Q&A**
- 5:30pm **Adjourn**

### SESSION 9: TRACK B: IMPACT OF DIGITAL ENVIRONMENT ON CLINICAL SPECIALTIES, PART 2 Moderator: David L. Weiss, MD Camino Real Room, Lobby Level

- 3:30pm **Cardiology**  
*Jonathan R. Pavlicek*
- 4:20pm **ED, ICU and OR**  
*David L. Weiss, MD*
- 4:50pm **MDCT and Contemporary MR**  
*Eliot Siegel, MD*
- 5:20pm **Q&A**
- 5:30pm **Adjourn**

## THURSDAY, MARCH 22, 2007

7:00am **Alamo City Breakfast**  
*Supported by Siemens Medical Solutions USA*

### SESSION 10: INFORMATICS Moderator: Paul J. Chang, MD

- 7:30am **Implementing Clinical Information Systems to Ensure Interoperability with the EHR**  
*Kevin W. McEnery, MD*
- 8:00am **Relationship with RHIOs and the EHR**  
*Gary J. Wendt, MD*
- 8:30am\* **Software to Automate PACS Administration Increases PACS Administrator's Efficiency, Accuracy and Streamlines Daily Workflow**  
*S. D. Aichinger  
OpenMed Technologies, Inc.*
- 8:45am\* **Managing CR and DR Performance with a Department-wide Digital X-ray Dashboard**  
*Todd R. Minnigh  
Eastman Kodak Company*
- 9:00am\* **Storage Gateway that Facilitates Cross-enterprise Document Sharing**  
*Charles D. Stockham, PhD  
DeJamette Research Systems*
- 9:15am **Ask the Experts Panel**  
*Kevin W. McEnery, MD;  
Donald W. Rucker, MD; Gary J. Wendt, MD*
- 9:45am **Break**  
*Supported by IBM Healthcare*

### SESSION 11: ADVANCED VISUALIZATION, PART 1 Moderator: Kevin W. McEnery, MD

- 10:15am **Approaches to Visualizing and Managing Large Data Sets**  
*Eliot Siegel, MD*
- 11:05am **How and By Whom Should Large Data Sets be Processed?**  
*Gary J. Wendt, MD*
- 11:35am **Optimizing the Use of Multi-modality Image Fusion Across the Healthcare Enterprise**  
*Hugh Bettesworth*
- 12:05pm **Q&A**
- 12:15pm **Riverwalk Buffet Lunch**  
*Supported by GE Healthcare*

### SESSION 12: Advanced Visualization, Part 2 Moderator: Steven C. Horii, MD

- 1:45pm **Economics and Billing of Advanced Visualization**  
*Eliot Siegel, MD*
- 2:15pm\* **Improving Lossless Storage for Digitized Mammograms**  
*K. Thomas Pickard  
PACSGEAR, Inc.*
- 2:30pm\* **Wall Motion Scoring Tool**  
*Robert Arling  
Philips Medical Systems*
- 2:45pm\* **Improvements in Pathology Perception while Reading Faster and More Accurately; Meeting the Demands for More Healthcare at a Lower Cost**  
*M. Reicher, MD  
DR Systems, Inc.*
- 3:00pm **Ask the Experts Panel**  
*Hugh Bettesworth; Paul J. Chang, MD;  
Eliot Siegel, MD; Gary J. Wendt, MD*
- 3:30pm **Break**  
*Supported by IBM Healthcare*
- 4:00pm **Technical Exhibits Close**

### SESSION 13: TRACK A: INFORMATION TRANSFER IN A DIGITAL ENVIRONMENT Moderator: David L. Waldman, MD Navarro Ballroom

- 4:00pm **Communication Skills of a PACS Administrator**  
*Mary L. Thomas, RT*
- 4:30pm **Specialist-to-Specialist Communication**  
*David L. Waldman, MD*
- 5:00pm **Getting Buy-in and Communicating with Referring Physicians**  
*J. Neal Rutledge, MD*
- 5:30pm **Adjourn**

### SESSION 14: TRACK B: IMPACT OF DIGITAL ENVIRONMENT ON CLINICAL SPECIALTIES, PART 3 Moderator: John S. Koller Camino Real Room, Lobby Level

- 4:00pm **Pathology**  
*Robert E. Miller, MD*
- 4:50pm **Visible Light**  
*Gary J. Wendt, MD*
- 5:20pm **Q&A**
- 5:30pm **Adjourn**

## FRIDAY, MARCH 23, 2007

7:00am **Alamo City Breakfast**  
*Supported by Siemens Medical Solutions USA*

### SESSION 15: STORAGE AND STORAGE MANAGEMENT Moderator: Steven C. Horii, MD

- 7:30am **High Availability, Redundancy and Business Continuity**  
*John S. Koller*
- 8:00am **Information Life Cycle Management for Healthcare**  
*John S. Koller*
- 8:30am **Total Cost of Ownership of Healthcare Storage**  
*Dennis Martin*
- 9:00am\* **DICOM Services Grid**  
*Shannon M. Werb  
Acuo Technologies*
- 9:15am\* **How to Achieve 99.999% Uptime on your PACS Core System**  
*Dustin P. Cornell  
MTS Delft Informatics Division*
- 9:30am\* **Implementing Image Repositories and Registries for Patients across Multi-enterprise Boundaries**  
*R. J. Hollebeek  
National Digital Medical Archive*
- 9:45am **Ask the Experts Panel**  
*John S. Koller, Dennis Martin,  
Edward M. Smith, ScD, Gary J. Wendt, MD*
- 10:15am **Break**  
*Supported by IBM Healthcare*

### SESSION 16: RISK MANAGEMENT IN A DIGITAL ENVIRONMENT Moderator: David L. Waldman, MD

- 10:45am **Risk Management from a Healthcare Perspective**  
*Spencer L. Studwell, Esq.*
- 11:15am **Risk Management from an IT Perspective**  
*Kris S. Knight, JD*
- 11:45am **Ask the Experts Panel**  
*Steven C. Horii, MD; Kris S. Knight, JD;  
J. Neal Rutledge, MD;  
Spencer L. Studwell, Esq.*
- 12:15pm **Closing Comments**  
*David L. Waldman, MD*
- 12:20pm **Adjourn**

# Acknowledgements

We wish to thank the following companies for their generous unrestricted educational grants in support of this conference:

- **Acuo Technologies**
- **AFC Industries Inc.**
- **Agfa Healthcare**
- **AMICAS, Inc.**
- **Avreo, Inc.**
- **BARCO**
- **BRIT systems, Inc.**
- **Bycast, Inc.**
- **Candelis, Inc.**
- **Cerner Corporation**
- **Cisco**
- **CoActiv Medical Business Solutions**
- **DatCard Systems, Inc.**
- **DeJarnette Research Systems, Inc.**
- **DR Systems, Inc.**
- **Eastman Kodak Company**
- **EIZO Nanao Technologies, Inc.**
- **Emageon**
- **FUJIFILM Medical Systems USA**
- **GE Healthcare**
- **Hewlett Packard Company (HP)**
- **IBM**
- **IMPAC Medical Systems**
- **InSiteOne, Inc.**
- **Iron Mountain**
- **KOM Network**
- **MTS Delft USA**
- **NAI Technology**
- **National Digital Medical Archive, Inc.**
- **NovaRad Corporation**
- **OpenMed Technologies Corp.**
- **OTech Inc.**
- **PACSGEAR, Inc.**
- **Philips Medical Systems**
- **RedRick Technologies Inc.**
- **ScImage**
- **SG&A Consulting**
- **Sectra North America, Inc.**
- **SENCOR**
- **Siemens Medical Solutions USA, Inc.**
- **Vital Images**

We also wish to acknowledge the following companies for supporting:

- **Agfa Healthcare** -  
*Conference Portfolios*
- **Cisco** -  
*Faculty Dinner*
- **DeJarnette Research Systems, Inc.** -  
*Conference CDs*
- **Emageon** -  
*Conference Lanyards*
- **GE Healthcare** -  
*Buffet Lunches*
- **IBM** -  
*Morning and Afternoon Breaks*
- **InSiteOne, Inc.** -  
*Coffee Mugs*
- **Iron Mountain** -  
*Hotel Key Cards*
- **MTS Delft** -  
*Audiovisual*
- **NovaRad Corporation** -  
*Registration Bags*
- **Philips Medical Systems** -  
*Welcome Reception*
- **Siemens Medical Solutions USA, Inc.** -  
*Breakfast Buffets*

We wish to acknowledge the following companies for providing in-kind support of this program:

- **AuntMinnie.com**
- **Canadian Healthcare Technology**
- **Diagnostic Imaging**
- **HealthImaging & IT**
- **Imaging Economics/Medical Imaging**
- **Imaging Technology News**
- **Outpatient Care Technology**
- **Radiology Today**
- **RT Image**

## Special Services

To request disability arrangements or to receive additional information, please contact the Office of Continuing Professional Education at 585-275-4392.

## Hotel Reservations

The Westin Riverwalk is located at 420 West Market Street in San Antonio, Texas. To ensure availability of guest rooms for our meeting registrants, a block of rooms has been reserved at the conference rate of \$200 single/double plus tax. To obtain the conference rate (based on availability in room block), reservations must be made before 5:30pm Central Time, Tuesday, February 27, 2007.

**For Room Reservations Call:  
The Westin Riverwalk  
1-888-627-8396 and  
Reference PACS 2007**

Reservations received after February 27, 2007 will be accepted on a space availability basis at the prevailing rates being sold by the hotel at that time. Check-in time is 3:00pm and check-out is 12 Noon. Please ask for cancellation information when making your hotel accommodations. Be sure to request a confirmation. This will allow you to confirm that your verbal request was handled correctly. Please bring your confirmation with you to San Antonio.

**Reserve Early –  
Rooms Sell Out Quickly**

**Conference Room Block  
May Be Filled Before  
February 27, 2007**

**For complete program details visit us at:  
[www.urmc.rochester.edu/pacs2007](http://www.urmc.rochester.edu/pacs2007)**

## Registration Fees

\$595 Until January 26, 2007

\$695 After January 26, 2007

Group Discount\*:

\$525 each until January 26, 2007

\$625 each after January 26, 2007

\*Group Discount for 3 or more from same institution/office. All forms and fees must be received together to qualify for group discount.

Day Rate: **\$295**

(excludes Conference Syllabus)

### The conference registration fee includes:

- Attendance at all sessions
- Access to all Exhibit Areas
- Hands-on opportunities with Exhibitor Workstations
- Internet access
- Conference Syllabus
- Conference CD of didactic lectures and other materials
- Three Alamo City Breakfasts, three Riverwalk Lunches, three Morning Breaks, four Afternoon Breaks, and a Welcome Reception

Spouses and/or companions are invited to attend the Welcome Reception

The registration fee must accompany the registration form. Please make checks payable to Continuing Professional Education. If you are paying by Visa, Discover or MasterCard, you may fax your registration form to 585-275-3721. Receipts will be issued at the conference. It is essential to register and obtain your hotel accommodations as early as possible. The number of hotel rooms is limited. See Hotel Registration for details.

All conference cancellations must be made in writing and received at the CPE Office prior to February 9, 2007. For all cancellations, an administrative fee of \$75 will be deducted from all refunds. No refunds will be issued after February 9, 2007.

PACS 2007 – 7th Annual Conference • March 20-23, 2007 – San Antonio, TX

# Conference Registration Form

INFORMATICS...The Foundation of The Digital Healthcare Enterprise

THE REGISTRATION FEE MUST ACCOMPANY THE REGISTRATION FORM

Please **PRINT Legibly and Complete All Sections**

Name \_\_\_\_\_  
First Name Last (Family) Name Title

Institution/Affiliation \_\_\_\_\_

Address ( Home/ Business) \_\_\_\_\_

City \_\_\_\_\_ State \_\_\_\_\_ Zip+4 \_\_\_\_\_

ASRT Number \_\_\_\_\_ Last 4 Digits of SSN \_\_\_\_\_ (for record keeping only)

Position: *Physician* \_\_\_\_\_ *Administrator* \_\_\_\_\_ *IT* \_\_\_\_\_ *PACS Administrator* \_\_\_\_\_ *Technologist* \_\_\_\_\_ *Other* \_\_\_\_\_

Specialty: *Radiology* \_\_\_\_\_ *Cardiology* \_\_\_\_\_ *Pathology* \_\_\_\_\_ *IT* \_\_\_\_\_ *Vendor* \_\_\_\_\_ *Radiation Oncology* \_\_\_\_\_ *Other* \_\_\_\_\_

Office Telephone \_\_\_\_\_ FAX \_\_\_\_\_

E-mail Address \_\_\_\_\_

How did you hear about this meeting? Brochure \_\_\_\_\_ Postcard \_\_\_\_\_ Colleague \_\_\_\_\_ PACS 2007 Website \_\_\_\_\_  
Web \_\_\_\_\_ Magazine or Journal \_\_\_\_\_ AuntMinnie.com \_\_\_\_\_ Other \_\_\_\_\_

Vegetarian Lunch Required? Yes \_\_\_\_\_ No \_\_\_\_\_

REGISTRATION FEE:  \$595 Until January 26, 2007  \$695 After January 26, 2007

GROUP DISCOUNT:  \$525\* Until January 26, 2007  \$625\* After January 26, 2007

\*3 or more from same institution/office - must register at same time

DAY RATE:  \$295 (Circle Day: Tues. Wed. Thurs. Fri.)

### SIGN UP FOR THE FOLLOWING ACTIVITY:

**TUESDAY, MARCH 20, 2007:**

**WELCOME RECEPTION:**

Will attend  Spouse/Companion Will Attend  Will NOT attend

### METHOD OF PAYMENT:

Check (payable to: Continuing Professional Education)

Visa  MasterCard  Discover

Card Number: \_\_\_\_\_ Exp. Date \_\_\_\_\_

Name on card: \_\_\_\_\_

Signature: \_\_\_\_\_

### PLEASE RETURN FORM WITH PAYMENT TO:

University of Rochester  
Continuing Professional Education (CPE)  
601 Elmwood Avenue, Box 677  
Rochester, NY 14642-8677  
Phone: (585) 275-4392 FAX: (585) 275-3721

### PLEASE CHECK ALL THAT APPLY AT YOUR INSTITUTION/OFFICE:

- PACS already installed
- Changing PACS
- Looking for a PACS vendor

If paying by credit card, you may fax your registration to the CPE Office. Copies of this form are acceptable. Please do not reduce this form. For non-US registrants, payment MUST be in US Dollars only. **Cancellation Policy:** All cancellations must be made in writing and sent to the CPE Office prior to February 9, 2007. An administrative fee of \$75.00 will be deducted from all refunds. No refunds will be issued after February 9, 2007.



PACS 2007  
7th Annual Conference

# INFORMATICS...

## The Foundation of the Digital Healthcare Enterprise

March 20-23, 2007  
The Westin Riverwalk, San Antonio, Texas



*Sponsored by:*

UNIVERSITY OF  
**ROCHESTER**  
SCHOOL OF MEDICINE & DENTISTRY  
*Office of Continuing Professional Education*

VISIT: [www.urmc.rochester.edu/pacs2007](http://www.urmc.rochester.edu/pacs2007)  
or call 585-275-4392

University of Rochester  
Continuing Professional Education (CPE)  
601 Elmwood Avenue, Box 677  
Rochester, NY 14642-8677

NONPROFIT ORG  
US POSTAGE  
PAID  
UNIVERSITY OF  
ROCHESTER