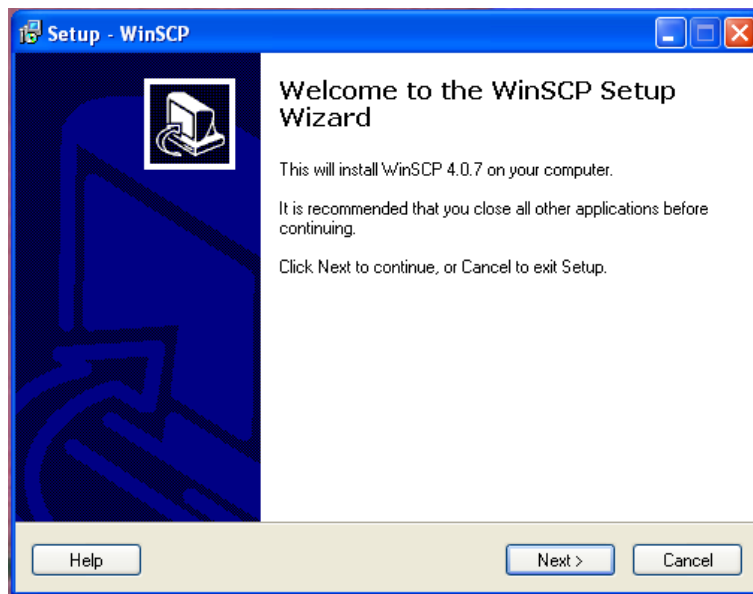


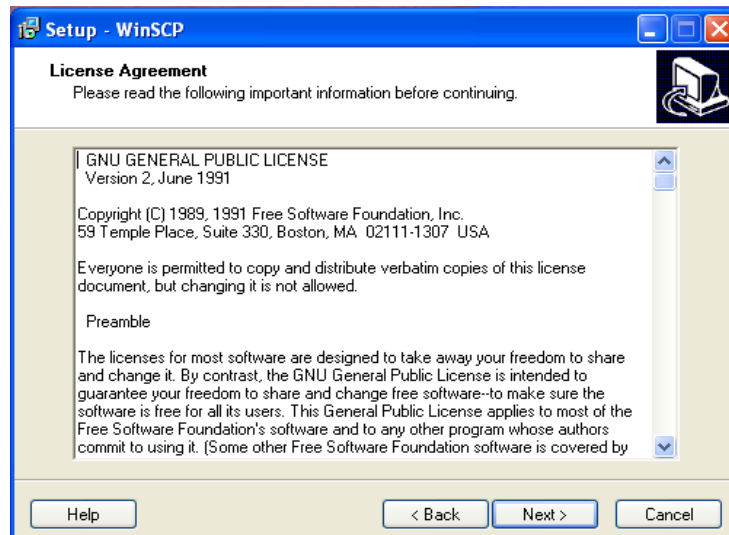
University of Rochester Functional Genomics Center Instructions for Installation and Use of SSH Client

To install:

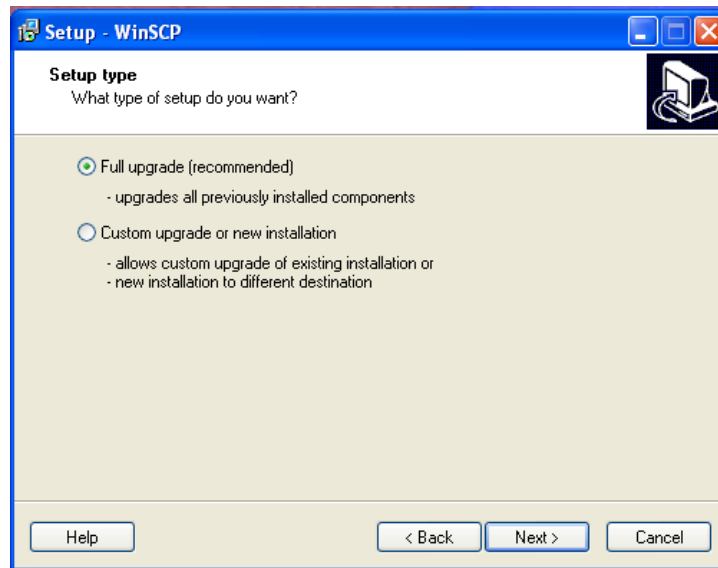
Double click on winscp407setup.exe. The following screen will appear:



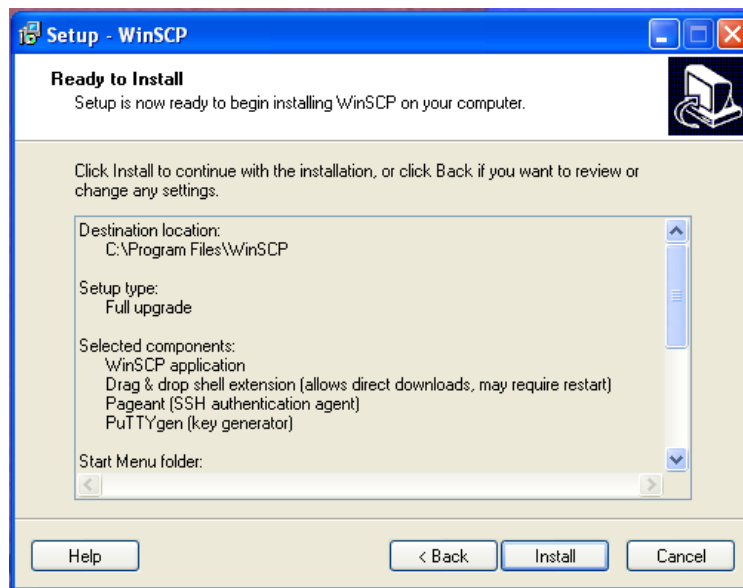
Click Next. The following screen will appear:



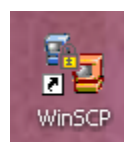
Click Next. The following screen will appear:



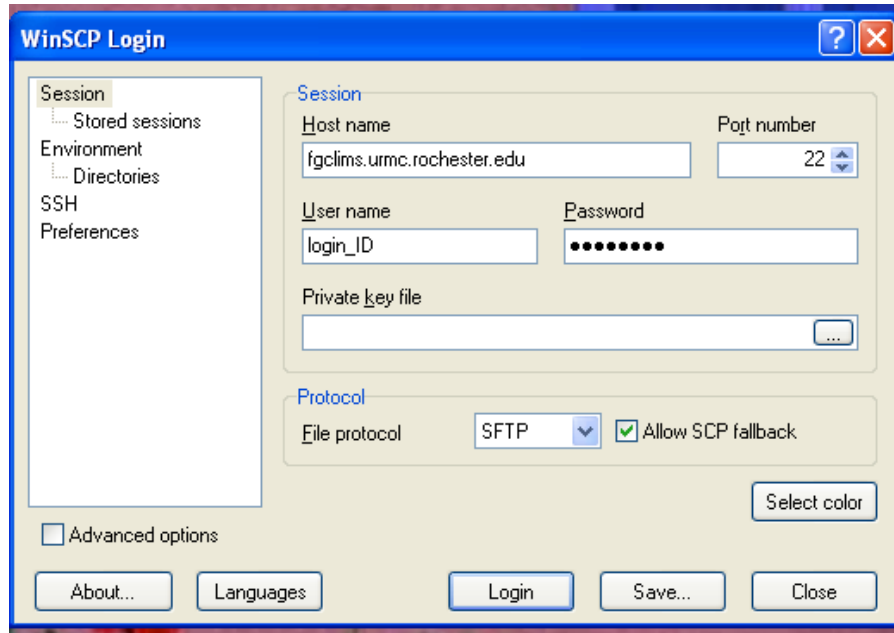
Click Next. The following screen will appear:



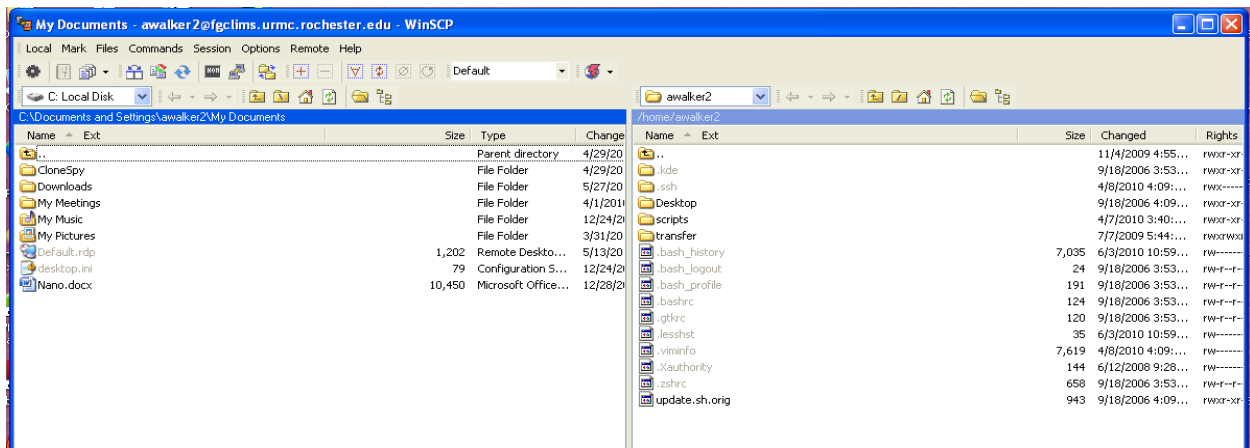
Click on Install and let the install process run. When the install process completes you will be asked to restart your computer. For the software to work correctly you do have to reboot. Once done click on the WinSCP icon to launch program:



It is recommended that you choose the Norton appearance which is the default. Once launched you should see this screen:



The host name is fgclims.urmc.rochester.edu. The user name and password supplied to you need to be entered. It is recommended that you save this for later usage. Click login. Once logged in the following screen will be shown:



The right side is our sever and the left is your local machine. You can now drag and drop files between machines. When you close this application it will ask to break the connection. Just answer yes.

If you have any questions or issues my mail contact is Arnold_Walker@urmc.rochester.edu or by phone 585-276-9998.