

Clinical Materials Services Unit (CMSU)



UNIVERSITY of ROCHESTER

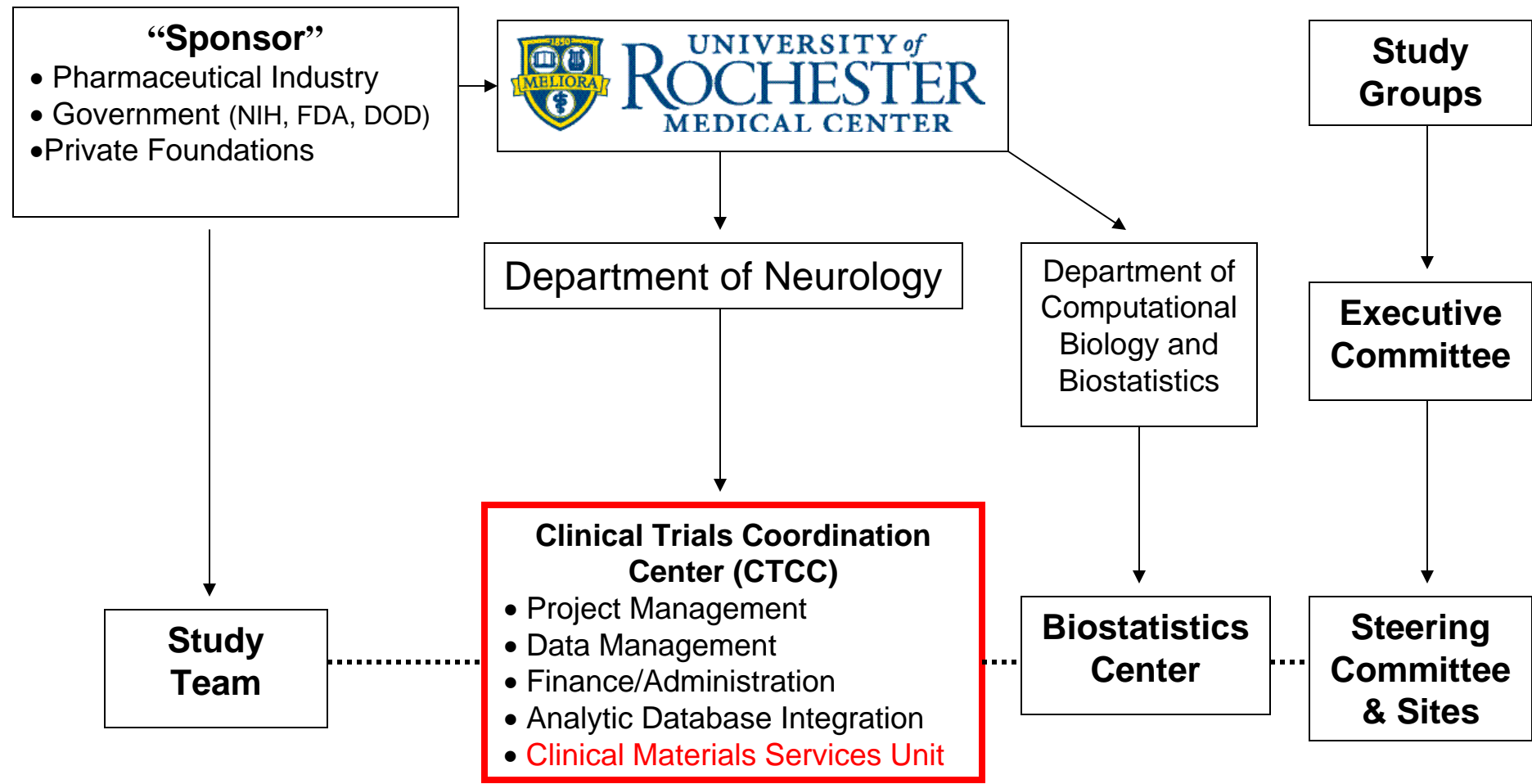
77 Ridgeland Rd

Rochester, NY 14623

www.clinicalmaterial.com





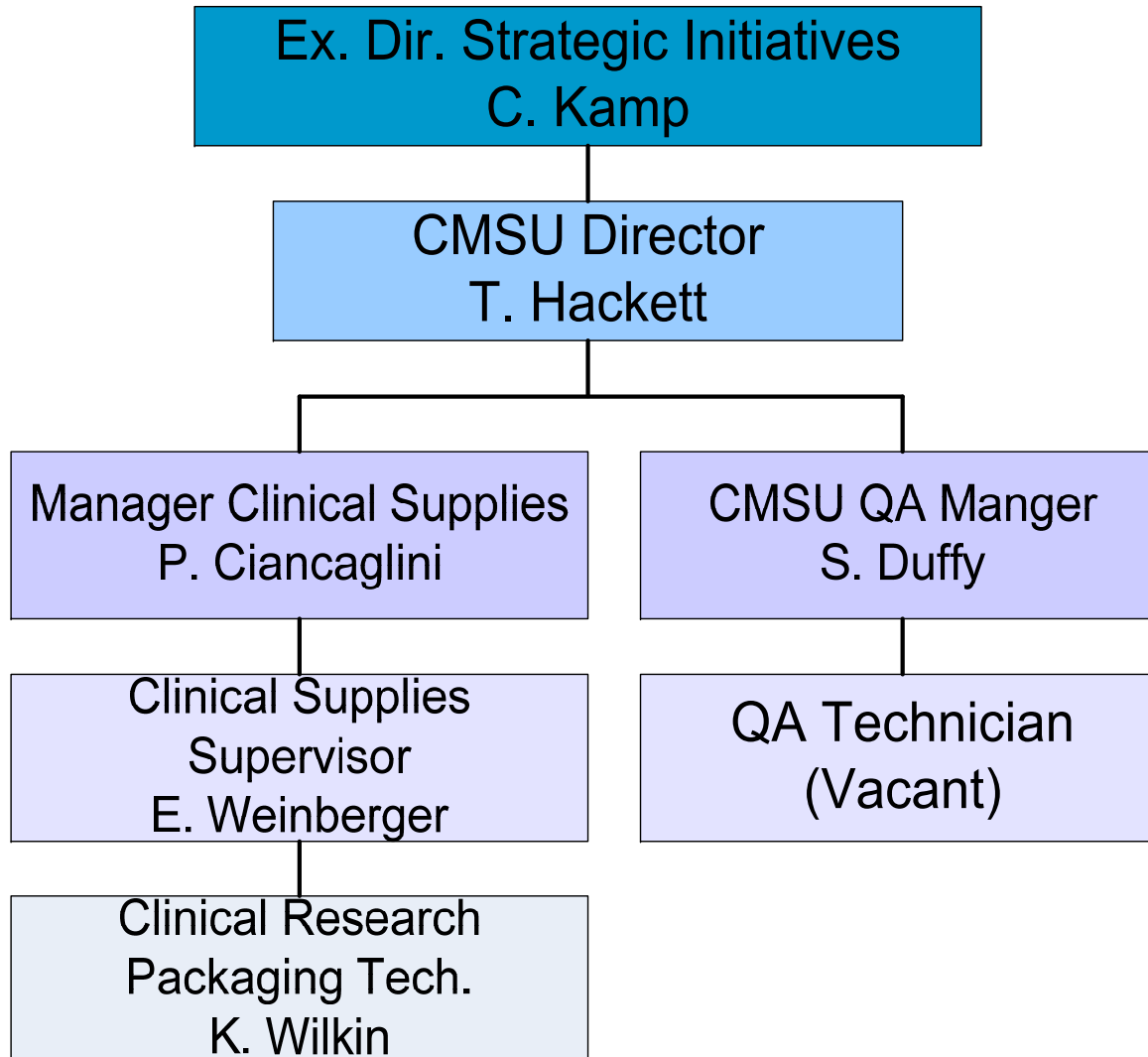


The Comprehensive Resource for Clinical Materials

- Clinical trial drug packaging (primary and secondary), labeling, distribution and return of clinical supplies
- cGMP compliant facility, registered with NYS Board of Pharmacy
- ClinPro/LBL™ Clinical Label Generation System capable of producing a variety of label types:
 - Open & blinded pressure sensitive label stocks
 - One-panel and multi-panel designs
 - Special temperature label stocks
 - Opaque materials for blinding & over-labeling
 - Color coded stocks
 - Blinding laminates
 - Finishing in fanfolds, rolls or sheets
 - Thermal transfer ribbons in black and colors
- Expert Scientific Opinion Leaders, ***Researchers talking to Researchers....***
- Over 100 years collective experience with Clinical Materials/Supply requirements



Clinical Materials Services Unit





Clinical Materials Services Unit

Come visit us at:

www.clinicalmaterial.com

QUESTIONS?

