

# Our unique, multidisciplinary approach.

Our program is the only one within 300 miles that provides true multidisciplinary care to patients with pituitary tumors.

On a patient's first visit, he or she receives a complete evaluation from both a neurosurgeon and an endocrinologist. As part of a leading academic medical center, we also bring together a comprehensive team of specialists from several areas of medicine—including radiation oncology, neuro-ophthalmology, neurology, reproductive medicine and genetic counseling—to provide the best clinical care for patients.

Our multidisciplinary approach is unique in upstate New York. It provides better outcomes, faster care and greater convenience to patients traveling long distances.

## Conditions we treat.

The Multidisciplinary Neuroendocrine Program provides care for the complete range of disorders that can affect the pituitary gland and the hypothalamic/pituitary region.

- Pituitary Adenoma
- Cushing's Syndrome
- Acromegaly
- Prolactinoma
- Rathke's Cyst
- Craniopharyngioma
- Other tumors near the pituitary and hypothalamus

## Contact us.

The Multidisciplinary Neuroendocrine Program is conveniently located at 2180 South Clinton Avenue in Rochester, NY. Parking at the clinic is FREE.

## The Multidisciplinary Neuroendocrine Program

2180 South Clinton Avenue  
Rochester, NY 14618  
585-273-2343  
[www.urmc.rochester.edu/  
neurosurgery/neuroendocrine/](http://www.urmc.rochester.edu/neurosurgery/neuroendocrine/)



MEDICINE of THE HIGHEST ORDER

## Rochester Neurosurgery Partners

Highland Hospital - Rochester General Hospital  
Strong Memorial Hospital - Unity Hospital

# The region's most advanced care for pituitary tumors and associated disorders.

The Multidisciplinary Neuroendocrine Program offers patients the most complete and advanced care for pituitary adenomas and other disorders of the hypothalamic/pituitary region.

- We are the **largest referral program** in upstate New York for patients with pituitary tumors.
- We are able to **evaluate all disorders** affecting the function of the pituitary gland and hypothalamus, and we can then **coordinate all aspects of care**.
- We provide patients with **simultaneous neurosurgical and endocrinologic evaluation**.
- Patients have access to a **complete team of specialists** in radiation oncology, neuro-ophthalmology, neurology, reproductive medicine and genetic counseling.
- We are **part of Rochester Neurosurgery Partners**, a community-wide initiative that includes Strong Memorial Hospital, Highland Hospital, Rochester General Hospital and Unity Hospital.
- Throughout every step of the process, we give both patients and family members **the caring support** they need.

**Patients deserve neuroendocrine care that is world-class in every respect. The Multidisciplinary Neuroendocrine Program has the expertise, technology and resources to ensure they receive it.**

# Pituitary Tumors

The Multidisciplinary  
Neuroendocrine Program

## Rochester Neurosurgery Partners

Highland Hospital - Rochester General Hospital  
Strong Memorial Hospital - Unity Hospital



## Treatments and procedures

Our program provides the most advanced treatments and procedures available today. Patients can have confidence in knowing they will receive state-of-the-art care without the need for travel to a hospital in another city.

Our treatments, include: endoscopic tumor resection, stereotactic radiosurgery and advanced medical therapies, as well as clinical trials of cutting edge treatments.

Every treatment is individualized to each patient. By utilizing the complete range of therapies, including medical and surgical approaches, we are able to provide patients with most customized care available.

## A better way to help doctors.

**Our program makes the referral process easier for providers:**

- We give you one phone number to call for referrals: Just call **585-273-2343**, and we will take care of everything else.
- Patients see both a neurosurgeon and an endocrinologist on their very first visit.
- Most appointments can be scheduled in less than week.
- We work closely with referring doctors, giving them the information they need to provide ongoing care.

## Our Team.



**G. Edward Vates, M.D., Ph.D.** is the neurosurgeon Co-Director of the Multidisciplinary Neuroendocrinology Clinic. He is a graduate of the Cornell University Medical College and completed a fellowship in Cerebrovascular and Skull Base Surgery at the Brigham and Women's Hospital, Harvard Medical School.



**Laura M. Calvi, M.D.** is the endocrinologist Co-Director of the Multidisciplinary Neuroendocrinology Clinic. She obtained her medical degree from the Harvard Medical School and completed a fellowship in Endocrinology at Massachusetts General Hospital, Harvard Medical School.



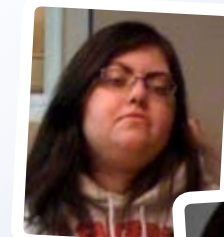
**Ismat Shafiq, M.D.** is an endocrinologist at the Multidisciplinary Neuroendocrine Clinic. She received her medical degree from Khyber Medical College, Pakistan. She then completed subspecialty training in endocrinology, metabolism and diabetes at the University of Rochester School of Medicine and Dentistry.

## Discovering better treatments.

The Multidisciplinary Neuroendocrine Program is the only program in the area that is actively involved in research and clinical trials to improve treatments for people with neuroendocrine diseases. Our research helps to ensure that patients always receive the most up-to-date therapies, treatments that may not be available anywhere else in the area.

## More experience, better outcomes.

Our clinic routinely treats over 200 new patients per year and performs close to 100 pituitary surgeries, making us one of the most experienced programs for the diagnosis and treatment of pituitary tumors in New York State and the surrounding region.



**Shelby, a sophomore in college, suddenly gained weight & became diabetic from a small pituitary tumor.**



**One year after surgery Shelby is cured, back to herself, back at school, and thrilled to have her life back.**

If you have questions or would like to refer a patient to the Multidisciplinary Neuroendocrine Program, **please call us at 585-273-2343.**

For more information on our program, please visit our web site: [www.urmc.rochester.edu/neurosurgery/neuroendocrine/](http://www.urmc.rochester.edu/neurosurgery/neuroendocrine/)

# Did you know?

- **One in five Americans has a pituitary tumor.**
- **Pituitary tumors can be the cause of erectile dysfunction, premature menopause and unexplained weight gain.**