



UNIVERSITY of
ROCHESTER
MEDICAL CENTER

UNIVERSITY OF ROCHESTER MEDICAL CENTER
DEPARTMENT OF IMAGING SCIENCES

Imaging Sciences Interesting Cases

CASE 199

Nadia F. Yusaf, MD

CLINICAL PRESENTATION: A 17-year-old female presented with abdominal pain.

IMAGING FINDINGS: Mediastinal widening/ anterior mediastinal mass.

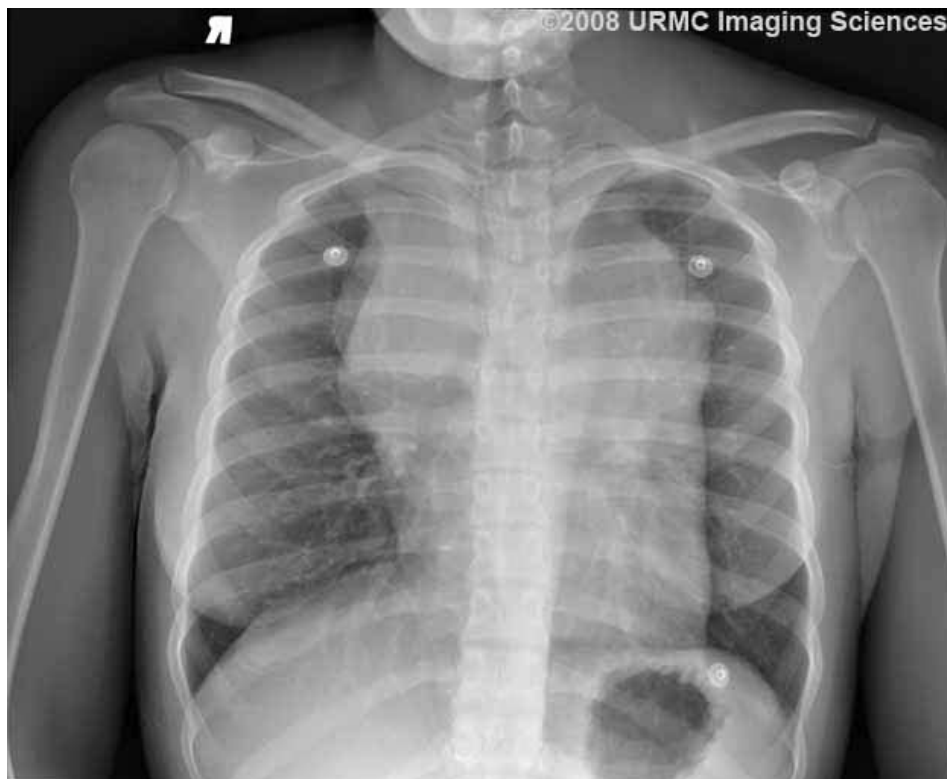


Figure 1. PA view of the chest.

DIAGNOSIS: Hodgkin lymphoma, nodular sclerosing type

DISCUSSION: On imaging, there is a predilection for the anterior mediastinum. Nodes rarely calcify prior to treatment. CT is the modality of choice for initial staging and follow-up monitoring of Hodgkin disease (HD). Other anterior mediastinal masses include thymoma, thyroid masses, teratoma and germ cell tumors. The Reed-Sternberg cell is pathognomonic. Clinically, the patient may present with asymptomatic cervical or supraclavicular lymphadenopathy. There is a bimodal distribution of disease (3rd to 8th decade of life). Chemotherapy and radiation have a 90% cure rate.

REFERENCES:

1. Dessain SK, Spears JL, Argiris A. Hodgkin disease. eMedicine, Oct. 31, 2008. <http://emedicine.medscape.com/article/201886-overview>