

## Neuroradiology

This pamphlet's purpose is to provide basic information to help you understand your sialogram procedure.

The physicians and physician assistants in the Division of Diagnostic and Interventional Neuroradiology at the University of Rochester Medical Center / Strong Memorial Hospital will answer any questions you may have before they perform your procedure.

If you do have any questions or concerns, please ask during your pre-procedure interview or call us ahead of time at 585-275-5268.

### Radiologists:

- ◆ P-L Westesson, MD, PhD, DDS,  
Director, Diagnostic & Interventional  
Neuroradiology
- ◆ Jeevak Almast, MD,  
Attending Neuroradiologist
- ◆ John Deveikis, MD,  
Attending Neuroradiologist
- ◆ Sven Ekholm, MD, PhD,  
Attending Neuroradiologist
- ◆ Henry Wang, MD, PhD,  
Attending Neuroradiologist

### Physician Assistants:

- ◆ Stephen D'Ambrosio, MPAS, RPAC  
Physician Assistant
- ◆ Iris Young, RPA-C, Physician Assistant

## Directions to Strong Memorial Hospital

### From the East:

NYS Thruway (I-90) to Exit 46; I-390 North to Exit 16 (W. Henrietta Rd); right on W. Henrietta Rd (Rte 15); proceed approximately two miles to Elmwood Avenue; make a left on to Elmwood Ave; the hospital will be on your left hand side; parking garage will be on the left.

### From the West:

NYS Thruway (I-90) to Exit 47; I-490 East to I-390 South to Exit 16A (E. River Rd.); right on East River Rd. and right on Kendrick Rd; bear left onto Lattimore Rd; one block to Crittenden Rd.; take right on Crittenden, parking garage will be on the left.

### From the South:

I-390 North to Exit 16 (W. Henrietta Rd.); right on W. Henrietta Rd (Rte. 15); proceed two miles and make a left on Elmwood Avenue; parking garage will be on the left.

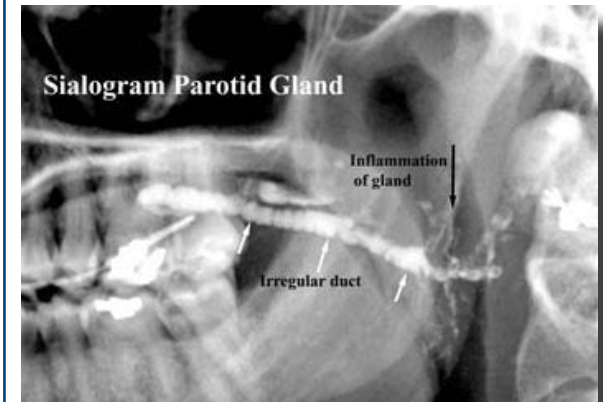
### From Parking Garage to the Patient Information Desk (Main Lobby) to the Imaging Sciences Department (Ground Floor)

Take the garage elevators to the 1st floor. Follow the signs to the main lobby. Go through the main lobby passing the information desk. Follow the Red (R) ceiling tags to the red elevators. Take the red elevators to the ground floor. Exiting towards the red corridor turn right and follow the black ceiling tiles marked (x) to the Imaging Sciences/Radiology reception area (G-3300).

## NEURORADIOLOGY

University Imaging at Strong Memorial Hospital  
601 Elmwood Avenue  
Rochester, NY 14642-8648  
Telephone: 585-275-5268

## Sialogram



**NEURORADIOLOGY**  
University Imaging at Strong Memorial Hospital  
601 Elmwood Avenue  
Rochester, NY 14642-8648  
Telephone: 585-275-5268



## Frequently Asked Questions Regarding a Sialogram

### Q. What is a Sialogram?

A. A sialogram is an x-ray study of the salivary glands that uses dye injected into the duct of the salivary gland. It is often used in addition to an MRI to study the structures where the saliva is expelled into the mouth.

### Q. Is there any preparation for a Sialogram?

A. No, there is no preparation for a sialogram. The patient can usually return to work the same afternoon.

### Q. Can I take my usual medications before the study?

A. Yes, all regular medication can be taken. No medication should be stopped.

### Q. What if I have a contrast allergy?

A. **ANY** contrast allergy, even if not severe, **MUST** be pretreated with prescription medicine. The physician ordering the sialogram will prescribe this for you.

### Q. What are the risks of the procedure?

A. There is only minor risk with the sialogram procedure. The main risk is slight swelling and tenderness in the gland that was injected.

### Q. What happens when the test is performed?

A. You will be laying on your back on an x-ray table. The opening in the mouth where the saliva normally comes out will cannulated with a small plastic tube and x-ray dye will be injected. X-rays will immediately be taken to determine the morphology of the gland.

## Preparation for Sialogram

➤ If no sedation was used, you may drive yourself back home after the procedure.

➤ You may return to work and resume your normal activity the same afternoon of your procedure.

