

NEURORADIOLOGY FELLOW



The University of Rochester has an opening for an ACGME approved neuroradiology fellow beginning July 1, 2011. The Division of Diagnostic and Interventional Neuroradiology operates three 1.5T, one 3T, and one open 1T MR scanners. The University also has an additional 3T MR scanner dedicated to research. There are six multi-slice CT scanners; two 16-slice and four 64-slice. A new bi-plane room is available for diagnostic and interventional procedures and a single-plane room for spine procedures.



The department is fully digital with PACS and no hard copy film reading. The Division of Diagnostic and Interventional Neuroradiology has six attendings, five fellows, and one researcher. Two of the attendings (one is actually a neurosurgeon) are specialized in neuro-endovascular procedures and one is specialized in spine procedures. The Division does 7-8 myelograms per day and a variety of spine procedures such as discogram, kyphoplasty, vertebroplasty, epidural injection, facet block, blood patch, spine biopsy and aspiration.



In the Neuroradiology Division, fellows participate in the entire scope of Neuroradiology and dedicated time is set aside for academic activities.

For further information please visit our web page:

<http://www.urmc.rochester.edu/smd/Rad/neurofell.htm#application>

Interested candidates should submit a letter of interest and their CV to:

P-L Westesson, M.D., Ph.D., D.D.S.

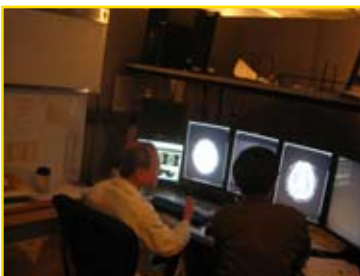
Director of the Division of Diagnostic and Interventional Neuroradiology at perlennart.westesson@urmc.rochester.edu

Or by mail to Per Lennart Westesson, M.D., Ph.D., D.D.S.

Department of Imaging Sciences, Box 648,

University of Rochester Medical Center,

601 Elmwood Avenue, Rochester, NY 14642-8648.



The University of Rochester is an equal opportunity employer.



UNIVERSITY of
ROCHESTER
MEDICAL CENTER