
DEPARTMENT OF RADIOLOGY

The faculty in the Department of Radiology are committed to assisting students to understand the role of diagnostic radiology in the consultative and direct care of patients. The Department teaches students the proper utilization of all radiological sciences in the maintenance of health and the diagnosis and treatment of the sick and injured. Students are first introduced to normal human anatomy as seen through radiologic images and to the radiologic findings that result from the various disease processes that affect adults and children. Students are to learn how medical images assist in the diagnosis and treatment of patients and when certain radiologic examinations are appropriate and useful. In addition, the student is expected to acquire knowledge of the benefit of each examination in relation to cost, patient discomfort, patient inconvenience, and radiation safety. Finally, the student is introduced to the principles whereby one radiologic examination is preferred over another radiologic study or nonradiologic diagnostic alternative. Diagnostic radiology includes conventional radiography and fluoroscopy, ultrasound, nuclear medicine, computed tomography, magnetic resonance imaging, and various interventional techniques for both diagnosis and therapy.

The Department of Radiology cooperates with the Department of Neurobiology and Anatomy in the first-year course in gross anatomy. Elective clerkships of varying lengths are provided for third- and fourth-year students in many divisions of diagnostic radiology. Radiology conferences and teaching sessions are held in association with courses of other departments during the clinical years.

Participation of students is encouraged in radiologic research. Opportunities are available for qualified student candidates for postgraduate degrees as well as elective experiences. The students are encouraged to work with the faculty in various clinical areas of diagnostic radiology as well as digital image processing, radiobiology, and radiation health.

Members of the Department of Radiology are available to meet with students on individual diagnostic and treatment problems. Such informal consultations are encouraged by the staff and constitute a significant part of radiology teaching. Students are also welcomed at the many departmental conferences held daily for residents and students in the Struck conference room.

Faculty of the Department of Radiology

Arvin E. Robinson . . . *Professor of Radiology and Chair*. A.B. University of Pennsylvania, 1960; M.D. Medical College of Virginia, 1964. Intern (Rotating), Albert Einstein Medical Center, Philadelphia, 1964–65; Resident in Radiology, Duke University Medical Center, 1965–68; Fellowship, Pediatric Radiology, 1968–69; Major, USAMC, Fitzsimons General Hospital, 1969–71; Advanced Fellow in Academic Radiology (James Picker Foundation), 1968–69, 1971–74; Assistant Professor of Radiology, Duke University Medical Center, 1971–74; Director, Division of Diagnostic Radiology, 1972–75; Associate Professor of Radiology, 1974–75; Professor and Chair, Department of Radiology, University of South Alabama, 1975–85; Professor and Chair, Department of Radiology, Tulane, 1985–93; Professor and Chair, Department of Radiology, University of Rochester School of Medicine and Dentistry, 1993–.

John C. Wandtke . . . *Professor of Radiology and Associate Chair*. B.S. LeMoyne, 1966; M.D. Marquette, 1970.

Professors

Francis A. Burgener. M.D. University of Berne (Switzerland), 1967.

Raymond Gramiak, Emeritus. A.S.T.P. Princeton, 1945; M.D. Rochester, 1949.

Richard M. Green, and *Surgery*. A.B. Colgate, 1966; M.D. Rochester, 1970.

****Yuji Numaguchi**, and *Surgery and Neurology*. M.D. Nagasaki University (Japan), 1966; Ph.D. Kyushu University (Japan), 1978.

Robert E. O'Mara, Emeritus, part-time. B.S. Rochester, 1955; M.D. Albany, 1959.

Kevin J. Parker, and *Dean of Engineering and Applied Sciences, and Electrical and Computer Engineering*. B.S. SUNY (Buffalo), 1976; M.S. Massachusetts Institute of Technology, 1978; Ph.D. 1981.

Jovitas Skucas, Emeritus, part-time. B.S. Newark College of Engineering, 1958; M.S. 1964; M.D. Hahnemann, 1968.

Saara M.S. Totterman, and *Orthopaedics*. B.Sc. Turku (Finland), 1963; M.D. Oulu (Finland), 1967; D.Sc. Bergen (Norway), 1983.

Robert C. Waag, and *Electrical and Computer Engineering*. B.E.E. Cornell, 1961; M.S. 1963; Ph.D. 1965.

Per-Lennart Westesson. B.D.Sc. University of Lund (Sweden), 1970; D.D.S. 1974; Ph.D. 1982; M.D. Rochester, 1996.

Clinical Professors

Oscar H. Gutierrez, Emeritus. M.D. University of Chile, 1960.

Wende W. Logan-Young. B.S. Westminster, 1957; M.D. Buffalo, 1961.

Derace L. Schaffer. B.A. Hamilton, 1969; M.D. Albany Medical, 1973.

Arthur J. Segal, and *Urology*. B.A. Syracuse and Hofstra, 1964; M.D. SUNY (Upstate), 1968.

***Edward M. Smith**. B.E.S. Johns Hopkins, 1959; M.E.S. 1960; Sc.D. 1963.

Theodore F. Van Zandt. A.B. Rochester, 1945; M.D. 1950.

Associate Professors

Jeanne A. Cullinan. B.S. Wilkes College, 1978; M.D. Hahnemann, 1978.

*Geographic Full-Time.

**On leave for one or more semesters in 2001–2003.

Thomas H. Foster, and Oncology, and The Institute of Optics, and Physics and Astronomy. B.S. Stevens Institute of Technology, 1983; M.A. Rochester, 1988; Ph.D. 1990.

Patrick J. Fultz, and Radiation Oncology. B.A. SUNY (Oswego), 1978; M.D. SUNY (Upstate), 1983.

Ronald H. Gottlieb. B.A. Pennsylvania, 1976; M.D. Duke, 1980.

Steven P. Meyers. B.A., B.S. Connecticut, 1976; M.S. Missouri, 1978; Ph.D. Wisconsin, 1982; M.D. Vermont, 1986.

Johnny U. V. Monu. M.B.B.S. Ibadan University (Nigeria), 1978.

Thomas W. Morris, and Phamacology and Physiology. B.S. Rochester, 1965; M.S. Michigan, 1967; Ph.D. 1972.

Ruola Ning. B.S. Zhongshan (China), 1982; M.S. Utah, 1986; Ph.D. 1989.

Deborah J. Rubens, and Surgery. B.S. Stanford, 1975; M.D. Rochester, 1979.

Ronald G. Schwartz, and *Medicine*. B.A. Rochester, 1973; M.S. Columbia, 1974; M.D. Rochester, 1978.

David A. Shrier. B.S.E. Princeton, 1980; M.D. Yale, 1984.

David L. Waldman. B.A. Connecticut College, 1981; M.S. Rochester, 1983; Ph.D., M.D. 1988.

Jianhui Zhong. B.S. Nanjing (China), 1982; M.S. Brown, 1984; Ph.D. 1988.

Clinical Associate Professors

***Mark J. Adams**. B.S. Lehigh, 1977; M.D. Rochester, 1982.

Seth A. Borg. B.S. Brooklyn College, 1963; M.D. Chicago Medical, 1968.

James T. Haggerty. B.A. Rochester, 1954; M.D. 1958.

***Nina B. Kliansky**. A.B. Radcliffe, 1975; M.D. Pittsburgh, 1980.

Christine R. Kurland. A.B. Mount Holyoke, 1974; M.D. Rochester, 1978.

Robert M. Lerner. M.S.E. University of Michigan, 1968; B.E.E. General Motors Institute, 1969; M.D. Rochester, 1977; Ph.D. 1978.

***James E. Lovelock**. B.A. LeMoyne, 1970; M.D. Cornell, 1976.

Ahmad Monajati. M.D. Pahlavi University (Iran), 1966.

Robert F. Spataro. B.S. University of Massachusetts, 1969; M.D. Rochester, 1975.

Robert M. Spitzer. B.S. Hobart, 1961; M.D. SUNY (Upstate), 1965.

Thomas F. Stephenson. B.S. SUNY (Buffalo), 1965; M.D. 1969.

Richard T. White. B.S. SUNY (Binghamton), 1967; D.O. Chicago College of Osteopathic Medicine, 1972.

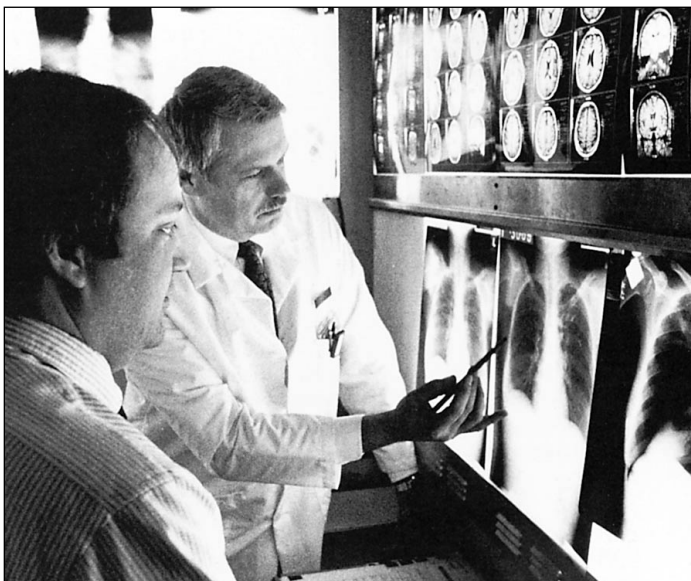
Adjunct Associate Professors

Joseph P. Hornak. B.S. Utica College of Syracuse University, 1975; M.S. Purdue, 1978; Ph.D. Notre Dame, 1982.

Michael R. Violante. B.A. SUNY (Buffalo), 1966; Ph.D. Florida State, 1970.

Visiting Associate Professor

Zhong Chen. B.S. Xiamen (China), 1985; M.S. 1988; Ph.D. 1993.



Assistant Professors

Cargill A. Alleyne. B.S. George Washington, 1986; M.D. Yale, 1991.

Edward A. Ashton. B.S. Loyola, 1991; M.S. Rochester, 1993; Ph.D. 1995.

Daphne Bavelier, and *Brain Cognitive Sciences*, and Center for Visual Science. Ecole Normale Supérieure de Paris, Ulm, 1985; M.S. Université Pierre and Marie Curie (Paris), 1988; Ph.D. Massachusetts Institute of Technology, 1992.

Anton O. Beitia. B.A. New York University, 1987; M.D. SUNY (Downstate), 1991.

Vaseem U. Chengazi. B.Sc. Punjab (Pakistan), 1985; M.B.B.S. King Edward (Pakistan), 1987; M.Sc. Quaid-e-Azam (Pakistan), 1990; Ph.D. London (England), 1996.

David A. Dombroski. B.S. Notre Dame, 1987; M.D. SUNY (Upstate), 1991.

Gary M. Hollenberg. B.A. Occidental, 1985; M.D. Rochester, 1990.

Gerald R. Holzwasser, part-time. B.A. Columbia, 1952; M.D. New York Medical, 1956.

Luann T. Jones, part-time. B.S. Stanford, 1985; M.S. 1985; M.D. University of California (San Diego), 1990.

Deborah J. Klein. B.A. Cornell, 1987. M.D. New York University, 1991.

Leonard B. Kolodny. B.A. Brandeis, 1988; M.D. University of Massachusetts, 1993.

Wing-chi Kwok. B.S. Hong Kong Baptist, 1984; M.S. Rensselaer, 1988; Ph.D. 1990.

David E. Lee. B.S. Muhlenberg, 1985; M.D. Robert Wood Johnson, 1989.

Margaret H. Ormanoski. B.S. Maine (Orono), 1985; D.O. New England College of Osteopathic Medicine, 1990.

Lawrence G. Sahler. B.S. University of Miami, 1977; M.D. New York Medical College, 1988.

Dean K. Shibata. B.S. California Institute of Technology, 1983; M.D. Stanford, 1989.

*Geographic Full-Time.

John G. Strang. B.S., M.S. Massachusetts Institute of Technology, 1984; M.D. Northwestern, 1988.

Raymond K. Tan. B.S. Union, 1990; M.D. Albany, 1994.

Susan L. Voci. B.S.N. Vermont, 1980; M.D. 1988.

Henry Z. Wang. B.A. Northwestern, 1981; M.D., Ph.D. Duke, 1989.

Eric P. Weinberg. B.A. Case Western Reserve, 1986; M.D. Albany, 1990.

Clinical Assistant Professors

Ted D. Barnett. B.S. Yale, 1976; M.D. Tufts, 1980.

Ruby L. S. Belton. B.S. Jackson State, 1967; M.D. Rochester, 1972.

Robert B. Benazzi. B.A. Virginia, 1964; M.D. Medical College of Virginia, 1970.

Allan D. Bernstein. B.A. New York University, 1972; M.D. Rochester, 1976.

Steven P. Braff. B.S. Union, 1972; M.D. Wayne State, 1976.

Antoinette Cavalieri. B.A. Canisius, 1982; M.D. SUNY (Upstate), 1986.

Mitchell A. Chess. B.S. Union, 1983; M.D. Columbia, 1987.

Frederick S. Cohn. B.A. Vassar, 1977; M.D. Rochester, 1981.

Susan A. Danahy. B.S. SUNY School of Environmental Science and Forestry, 1979; M.D. Buffalo, 1984.

John C. DeMocker. B.A. Rochester, 1951; M.D. 1955.

Stamatia V. Destounis. B.S. SUNY (Buffalo), 1984; M.D. SUNY (Upstate), 1989.

Ronald L. Hainen. B.A. Ohio State, 1968; M.D. Harvard, 1972.

Steven G. Herbert. A.B. Harvard, 1968; M.D. 1972.

Clifford T. Katz. B.A. Pennsylvania, 1978; M.D. Johns Hopkins, 1982.

Kamal Kothari. M.B.B.S. Jiwaji (India), 1973.

Roman M. Kowalchuk. B.S.E. Duke, 1985; M.S.E. Pennsylvania, 1987; Ph.D. 1991; M.D. 1992.

Michael E. Lebowitz. B.A. SUNY (Buffalo), 1965; M.D. SUNY (Downstate), 1970.

Peter J. Mehnert. B.A. Seton Hall, 1961; M.D. New Jersey College of Medicine, 1965.

David J. Millet. A.B. Hamilton, 1966; M.D. SUNY (Upstate), 1970.

James J. Montesinos. B.S. City University of New York, 1984; M.D. Mt. Sinai, 1988.

Avice M. O'Connell. M.B., B.Ch., B.A.O. Dublin (Ireland), 1973.

Kenneth D. Pearsen. B.S. University of Pennsylvania, 1981; M.D. Columbia, 1985.

Ralph A. Pincus, and *Medicine.* B.S. Brooklyn College, 1954; M.D. Columbia, 1958.

Savita Puri. M.D. All India Institute of Medical Sciences, 1968.

Victor S. Regenbogen. B.A. New Hampshire, 1978; M.D. New York Medical College, 1982.

Nicholas C. Russo. A.B. Harvard, 1964; M.D. SUNY (Upstate), 1968.

W. Winslow Schrank. B.A. Haverford, 1965; M.D. Maryland, 1969.

James A. Schuster. B.A. Cornell, 1982; M.D. Rochester, 1986.

Roger M. Smith, Jr. B.A. Rochester, 1983; M.S. Georgetown, 1984; M.D. Rochester, 1989.

Patricia A. Somerville. B.A. Johns Hopkins, 1981; M.D. Rochester, 1985.

Richard E. Tobin. A.B. Cornell, 1968; M.D. Rochester, 1972.

Paul M. Velt. B.S. Brooklyn College, 1970; M.D. University of Brussels, 1979.

Herman A. Wallinga. M.D. SUNY (Brooklyn), 1971.

Paul E. Weiss. B.S. University of Michigan, 1969; M.D. 1973.

Daniel B. Wopperer. B.A. Canisius, 1976; M.D. Georgetown, 1981.

Edward B. Zinkin. B.A. Queens College, 1965; M.D. Albert Einstein, 1969.

Adjunct Assistant Professor

Kalman N. Vizy. B.S.M.E. Cleveland State, 1963; B.E.S. 1964; M.S. John Carroll, 1967; Ph.D. Walden, 1990.

Visiting Assistant Professors

Toshio Moritani. M.D. Showa (Japan), 1987.

Gwy Suk Seo. M.D. Seoul National (Korea), 1984; M.M.S. 1989; Ph.D. Shinshu (Japan), 1997.

Chihiro Takahashi. M.D. Hokkaido (Japan), 1989.

Senior Associate

William J. Quinlan. B.S. St. John Fisher, 1957.

Associate

Pamela J. Bettcher. B.S. D'Youville College, 1997.

David L. Conover. B.S. SUNY (Oswego), 1977; M.S. St. Bonaventure, 1979.

Clinical Instructors

Ermelinda Bonaccio. B.A. Harvard, 1987; M.A. 1987; M.D. 1991.

Michael G. Bowers. B.S. Manhattan, 1973; M.D. SUNY (Downstate), 1977.

Sasi K. Cheruvu. B.S. Rensselaer, 1987; M.D. SUNY (Buffalo), 1991.

Janine L. Fogarty. B.S. Ithaca, 1985; M.D. SUNY (Upstate), 1990.

Nancy Gadziala. B.A. Manhattanville, 1973; M.D. SUNY (Downstate), 1977.

William R. Hampton. B.A. Queens, 1984; M.D. Rochester, 1988.

Radha Iyer. M.B.B.S. Grant Medical College (Bombay), 1974.

Daniel R. Jacobson. B.A. Buffalo, 1984; M.S. 1986; M.D. Albany, 1990.

Alka Kumar. M.D. All India, 1983.

A. James Lincoln. B.S. McGill, 1967; M.D. 1971.

Michael T. Miller. B.A. Middlebury College, 1979; M.D. Rochester, 1983.

Bruce J. Thaler. A.B. Hamilton, 1974; M.D. Washington University, 1978.

Thomas N. Thompson. B.S. Rochester, 1977; Ph.D. 1985; M.D. 1985.

Rosemary Utz. B.A. Colgate, 1975; M.D. Rochester, 1979.

David M. Wolf. B.S. Rutgers, 1980; M.D. Vanderbilt, 1984.

Visiting Instructors

Biao Chen. B.E. Shanghai (China), 1989; M.S. 1992; Ph.D. 1995.

Zhigang You. M.S. Beijing Institute of Technology (China), 1990.

Rongfeng Yu. B.S. Huazhong (China), 1991; Ph.D. 1997.