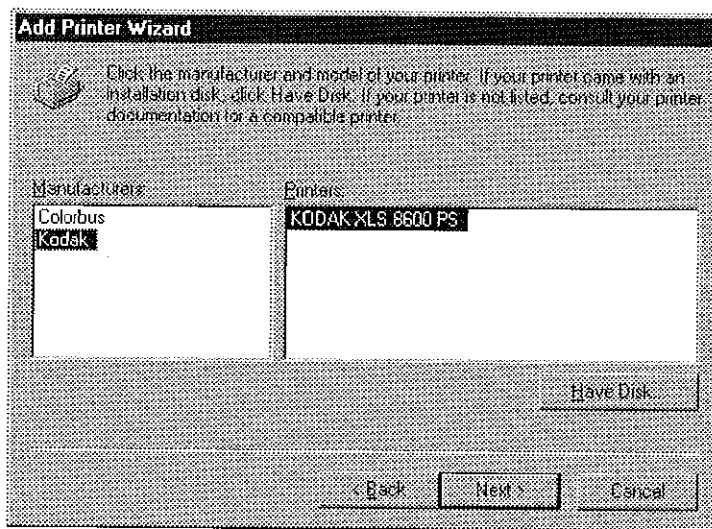
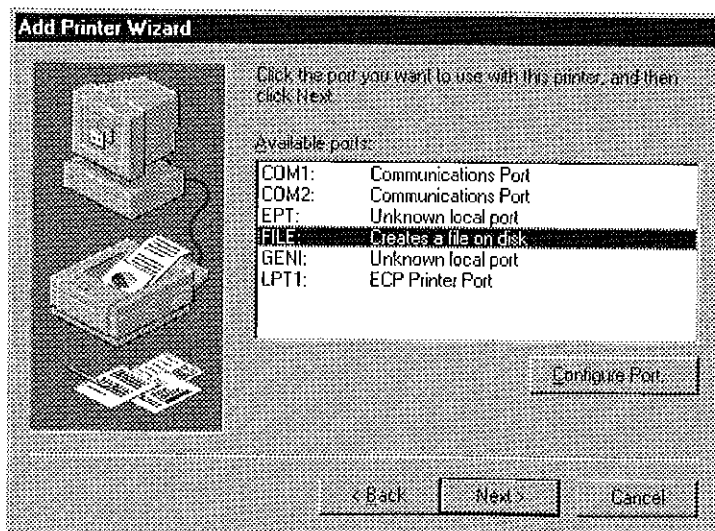


To make a Dye Sublimation Print (photo quality computer print), you need to create a PostScript print file for us. By installing this printer to "FILE" as the output device, all the necessary directions to recreate your image are recorded to disk. Our equipment reads this file, draws the image to memory and outputs the image. The screens below have been tested to work in most situations.

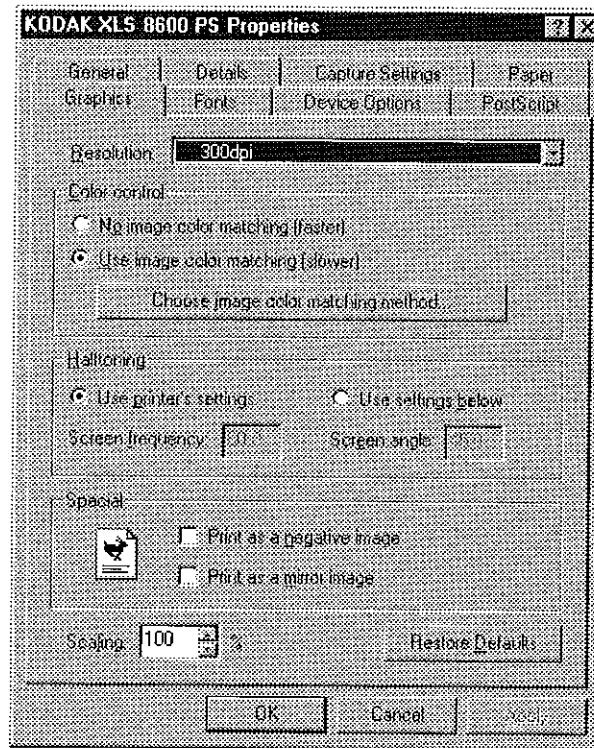
Click on the Start button, drag up to Settings, and down to Printers. Double click the Add Printer icon and the Add Printer wizard will start. Click on the Next > button and a screen will appear asking how is the printer attached to your computer. Choose Local Printer. Click on the Next > button and the screen below will appear. Choose Kodak under the Manufacturers: scroll box and the KODAK XLS 8600 XLS PS printer in the Printers: scroll box. Click on the Next > button.



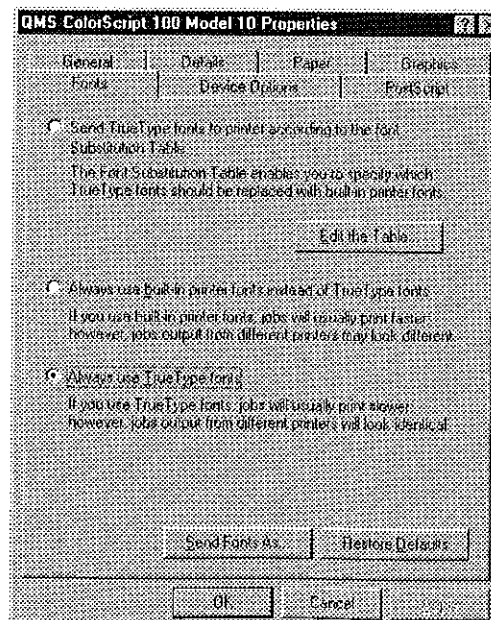
When the screen below appears, choose FILE: under Available ports:. Click on the Next > button.



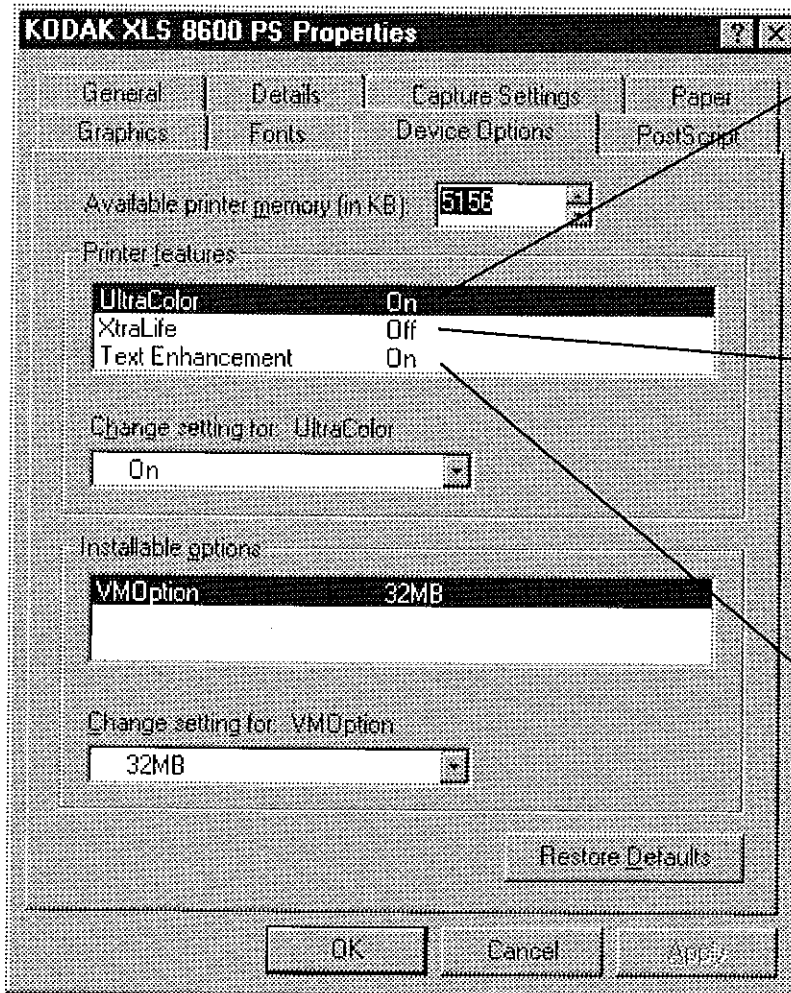
The next screen will ask if you want to set this printer as the default, select the **No** choice and click on the **Next >** button. Choose **No** for the print test page and click on the **Finish** button. You will be directed to insert a Windows disk so the system can install the printer. Once installed, the Kodak printer will appear in the **Printers** window. Right click on the **Kodak** printer and choose **Properties** from the menu. Click on the **Graphics** tab and choose **Use image color matching (slower)** option. This setting will minimize the color differences between applications and various color output devices.



Click on the **Fonts** tab and the screen below will appear. Click on the **Always use TrueType fonts** button.



Click on the Paper tab and select 8.5 x 12 in paper as the default. This size paper on the Kodak 8600 gives you an **8 x 10 inch image area**. Next click on the Device Options tab and the screen below will appear. The settings will be different depending on whether you usually work in Black & White or Color. When you have set the options you normally would use, click OK to save the all the defaults.



UltraColor - a printer based color management system. Normally, leave this feature on.

XtraLife - If you usually print **B&W**, turn this feature **ON**. If you print **Color** - turn it **OFF**. The wrong setting will create an error which **will stop the printer**.

Text Enhancement - a special feature which enhances the edges to sharpen fine the results for smaller font sizes. Can affect images also. Normally, leave this option on.