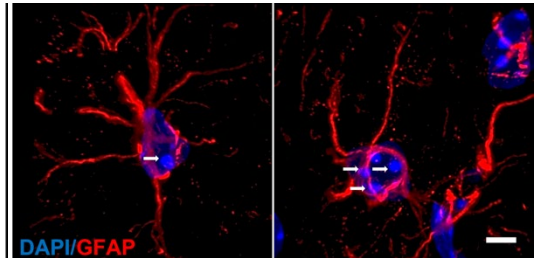
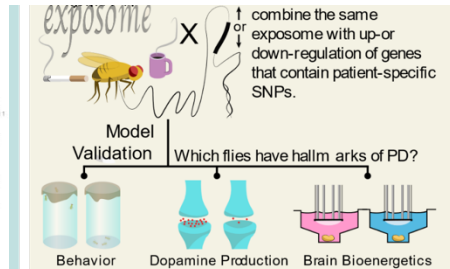
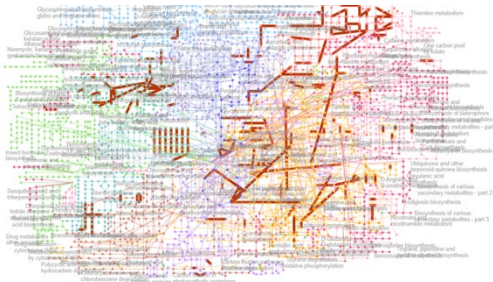


Postdoctoral Research Position
The Envi-Gene Lab
University of Rochester School of Medicine and Dentistry
Rochester, New York, USA



NIH-funded postdoctoral position is available in the Envi-Gene Lab (PI: Dr. Souvarish Sarkar) in the Department of Environmental Medicine at the University of Rochester Medical Center to study genetic modifiers of environmental factors in disease etiology using combination of *Drosophila* genetics, cell culture, and rodent models. For information on the lab please see <https://sites.google.com/view/envi-genelab?usp=sharing>. Candidates should have recently earned a Ph.D. or MD/Ph.D. degree(s). Expertise in either mouse handling or *Drosophila* work is preferred. Experience in proteomics/metabolomics data analysis is a plus. Interested applicants should send curriculum vitae, a brief description of research interests, and the contact information of three references to Dr. Souvarish Sarkar at Souvarish_Sarkar@URMC.Rochester.edu.

The University of Rochester has an active Postdoc Association that provides highly enriched environment for postdocs including career development workshops and social opportunities to get to know other postdocs. More information about postdoc activities and opportunities available on this webpage, <https://ccc.rochester.edu/pda/home/>

The University of Rochester is committed to fostering, cultivating and preserving a culture of equity and inclusion. The University believes that a diverse workforce and inclusive workplace culture enhances the performance of our organization and our ability to fulfill our important missions. The University is committed to fostering and supporting a workplace culture inclusive of people regardless of their race, ethnicity, national origin, gender, sexual orientation, socio-economic status, marital status, age, physical abilities, political affiliation, religious beliefs or any other non-merit fact, so that all employees feel included, equal valued and supported.

The lab values mentoring the next generation of scientists and the interest of the students and mentees is the foremost important thing. We aim to foster an inclusive work environment and to be a strong family together. We support each other at work and beyond. Life is finite and beautiful. Let's make the memories infinite.