

Have you ever had a biopsy or an organ surgically removed and wondered where it went?

Quick Answer: To Surgical Pathology where Pathologists' Assistants (PAs) dissect and describe your tissue!

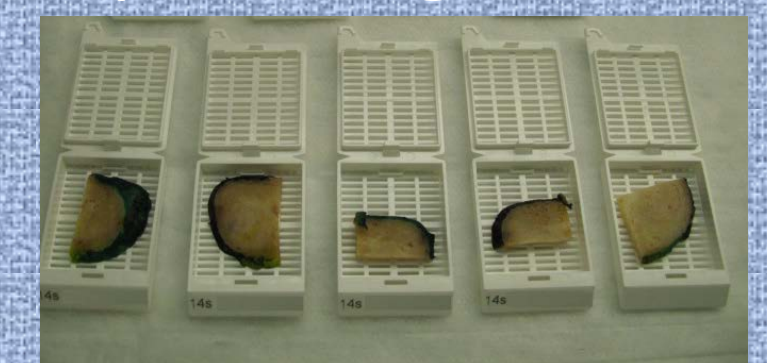
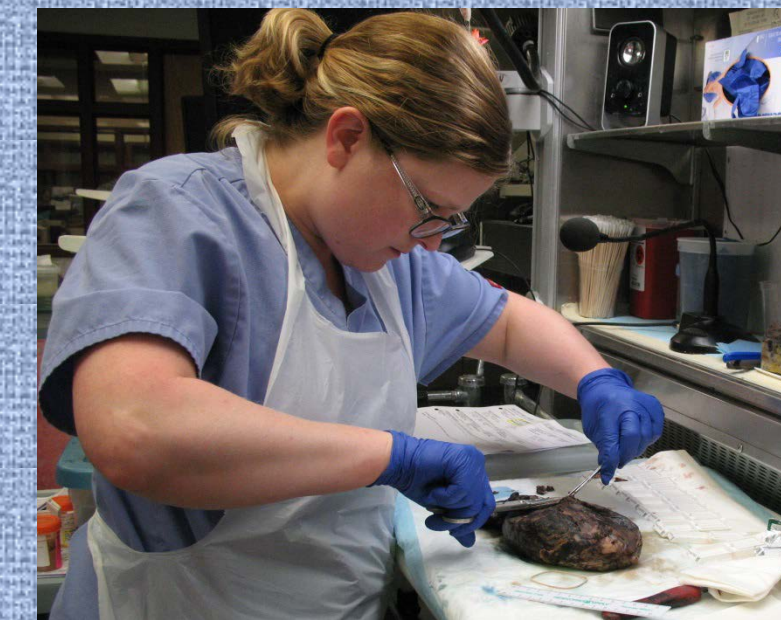
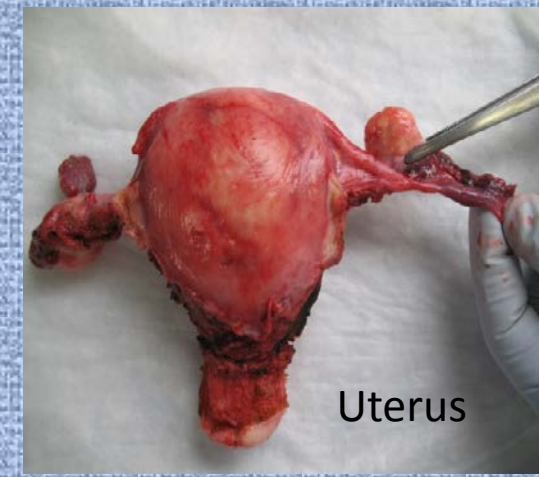
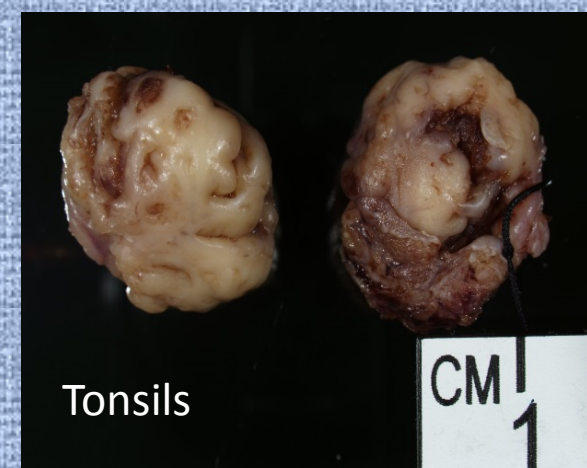
The PAs are responsible for dissecting and describing tissue specimens in a process known as "Grossing"

Specimens come in all shapes and sizes and can be Benign or Malignant

Tools of the Trade

Attention to detail is critical to patient care

PAs determine what areas of the specimen will be examined under the microscope by the pathologist



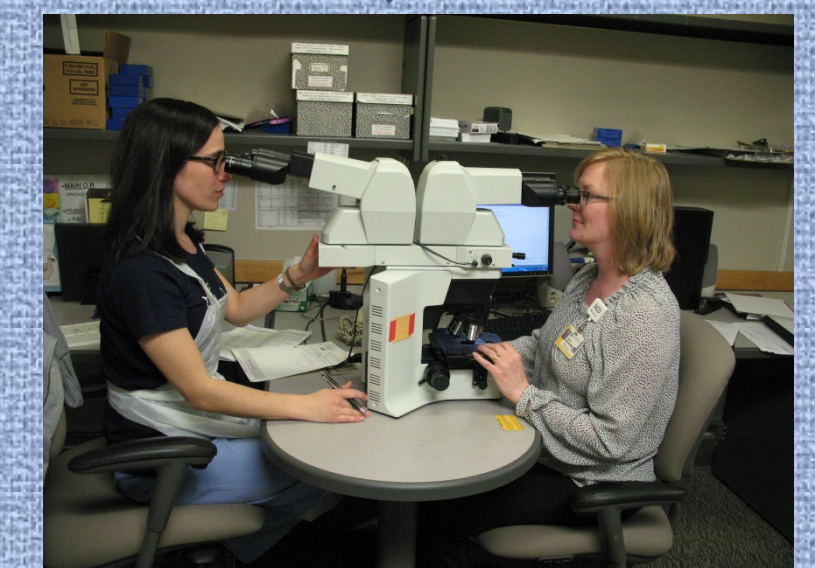
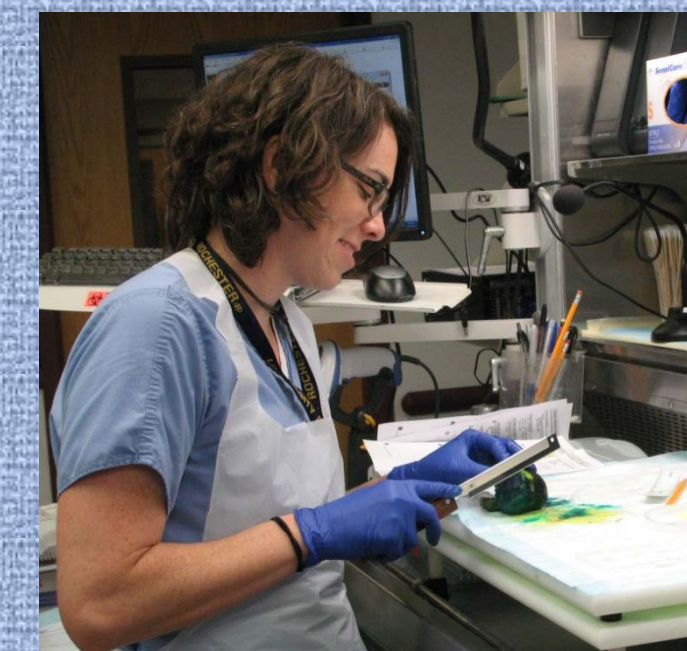
Tissue is placed in plastic cassettes



Histology creates the slide

A gross description includes information about the appearance of the tissue:

- Size
- Shape
- Color
- Consistency
- Identification of tumors
- Relationship of tumor to normal tissue



The Pathologist gives your doctor the diagnosis and together they figure out a plan to treat you!