

Olympus® Universal Filter Pipet Tips

**Universal Fit - Compatible with Most Pipets,
Including Gilson®, Eppendorf®, Poseidon and More**

Key Features

- Superior aerosol protection
- Designed for effortless insertion and ejection
- Low binding— minimizes sample loss
- Pre-sterilized by gamma irradiation
- Certified RNase, DNase, nucleic acid, and pyrogen-FREE
- Color-coded trays for quick identification

Cat #	Description	Qty/Unit
26-400	0.1 - 10µl Standard	10 x 96 Tips
26-401	0.1 - 10µl Reach	10 x 96 Tips
26-404	1 - 20µl Standard	10 x 96 Tips
26-407	1 - 100µl Standard	10 x 96 Tips
26-412	1 - 200µl Standard	10 x 96 Tips
26-415	1 - 300µl Standard	10 x 96 Tips
26-430	100 - 1,250µl Reach	10 x 96 Tips



NEXT-GEN® Nitrile and Latex Gloves

- High quality medical exam grade nitrile (ASTM D6319) and latex (ASTM D3578)
- Textured exterior offers secure grip in wet and dry conditions
- Soft nitrile and premium latex formulations provide comfort and durability

Cat #	Qty/Unit
43-101	E-GEN Latex Exam Gloves, Powder-Free, 10 Boxes of 100 Gloves
44-100	X-GEN Nitrile Exam Gloves, Cobalt Violet Blue, PF, 3mL, 10 Boxes of 100 Gloves
44-101	N-GEN Nitrile Exam Gloves, Light Blue, Powder-Free, 5mL, 10 Boxes of 100 Gloves
44-104	S-GEN Nitrile Exam Gloves, , Cobalt Violet Blue, PF, 3mL, 10 Boxes of 200 Gloves

Add XS, S, M, L, XL to the end of the Cat # to specify size



15 & 50ml Centrifuge Tubes

- 15,000 x g maximum RCF rating (15 and 50ml)
- Easy-to-label white cap
- Suitable for cryogenic storage at -80°C
- Made from USP Class VI medical grade virgin resin
- Certified DNase, RNase, pyrogen, and DNA/RNA-FREE
- **Produced in a HEPA filtered Class 100,000 clean room**

15ml Centrifuge Tubes

Cat #	Description	Qty/Unit
28-101	Racked, Sterile	500 Tubes
28-103	Bulk, Sterile	500 Tubes

50ml Centrifuge Tubes

Cat #	Description	Qty/Unit
28-106	Racked, Sterile	500 Tubes
28-108	Bulk, Sterile	500 Tubes



Best-in-Class DNA Transfection Reagent

- **Highly efficient:** reach maximal gene expression in hard-to-transfect cells
- **Cost-effective:** use minimum reagent volume and DNA quantity
- **Biologically relevant:** keep an excellent cell viability and morphology
- **Time-saving:** transfect with an optimized ready-to-use protocol

Cat #	Reagent Size	Buffer Size
55-250	0.1ml	10ml
55-251	0.75ml	2 x 60ml
55-252	1.5ml	4 x 60ml



DNA Clean & Concentrator® Kits (DCC™)

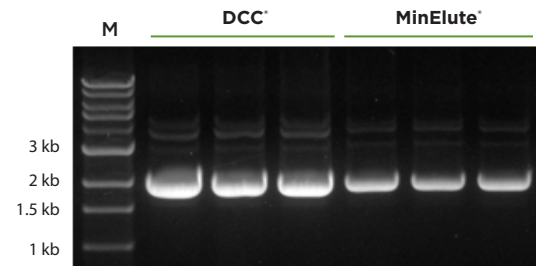
2 Min. PCR Clean-Up in as Little as 6µl Elution Volume

- Elution volume as little as 6µl – highly concentrated, ultra-pure DNA
- No wash residue carryover – ultra-pure DNA that is free of salts and contaminants
- 100µg and 500µg capacity kits also available online

Cat #	Format	Elution	# Preps
11-302*	DCC™-5 Kit,		50
11-303*	(5µg/prep)	≥ 6µl	200
11-304*	DCC™-25 Kit,		50
11-305*	(25µg/prep)	≥ 25µl	200
11-306A	ZR-96 DCC™-5 Kit,		2 x 96
11-306	(5µg/well)	≥ 10µl	4 x 96

*Add "C" to the end of the Cat # for capped columns

Recover Ultra-Pure, High-Quality DNA with
the DNA Clean & Concentrator®-5 Kits



High efficiency DNA recovery using the DCC-5.

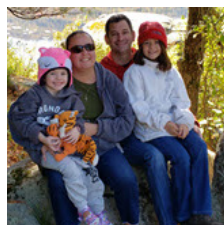
Equivalent amounts of DNA were purified using DCC®-5
or MinElute® Kit and analyzed by electrophoresis in a 0.8%
(w/v) agarose/TAE/EtBr gel.

Do You Have Excess QIAGEN® Kit Buffers?

Utilize Virtually Every Last Drop of Your Excess Miniprep Kit Solutions with UPrep® Spin Columns!

- Column design ensures complete elution with no binding/wash buffer carryover
- Ultra-pure, contaminant-free DNA or RNA, up to 25µg
- Supplied with collection tube

Cat #	Description	Qty/Unit
88-143	UPrep® Spin Columns, Uncapped	50
88-243C	UPrep® Spin Columns, Capped	50
88-343	UPrep® Micro Spin Columns, Uncapped	50
88-143MAX	UPrep® Maxiprep Columns, Uncapped	10
88-143MID	UPrep® Midiprep Columns, Uncapped	10



Email or Call to Request Samples!

Kristine Sturm

Your Genesee Sales Representative

Phone: 800.789.5550 x 2050

ksturm@geneseesci.com