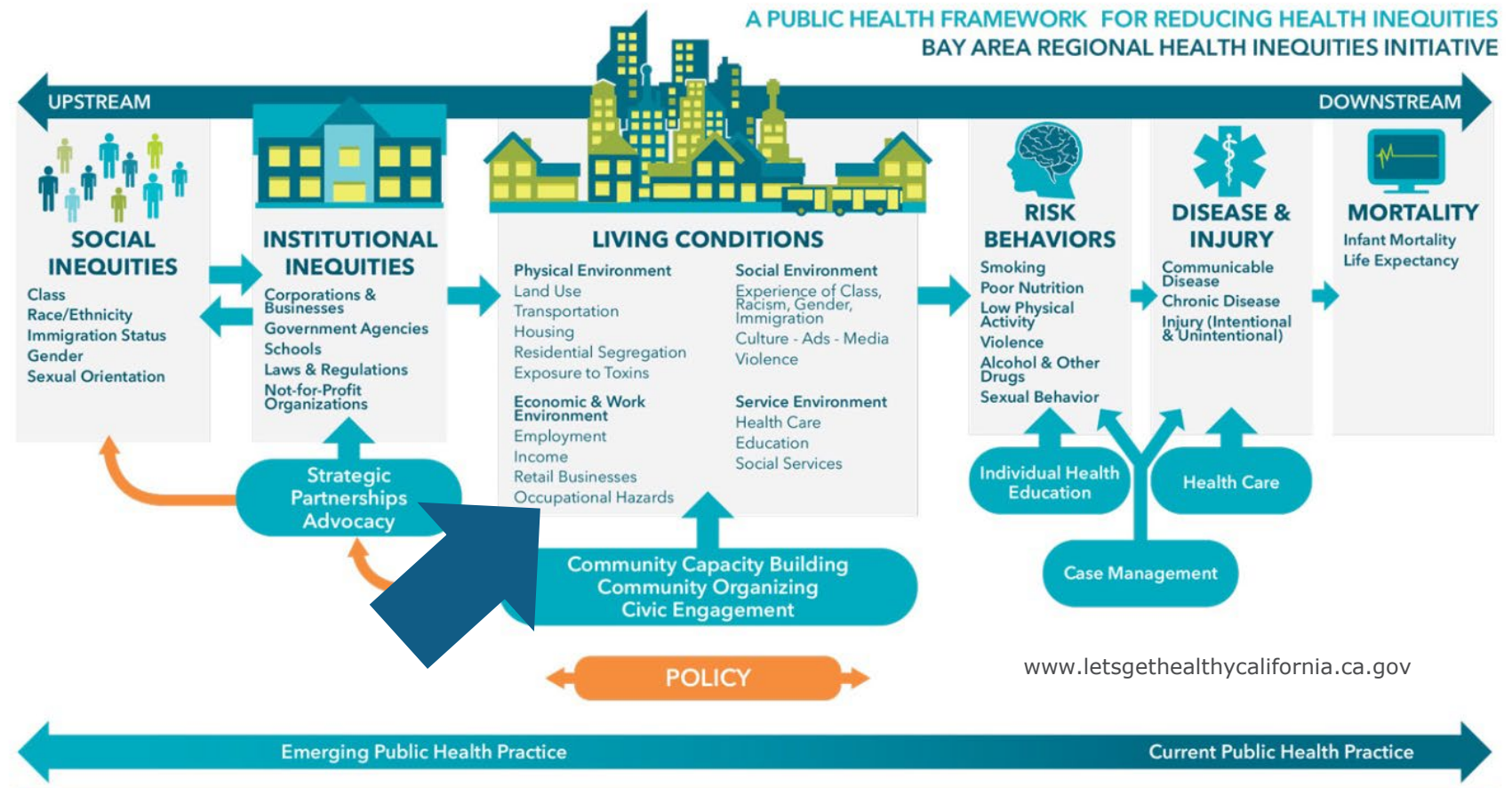


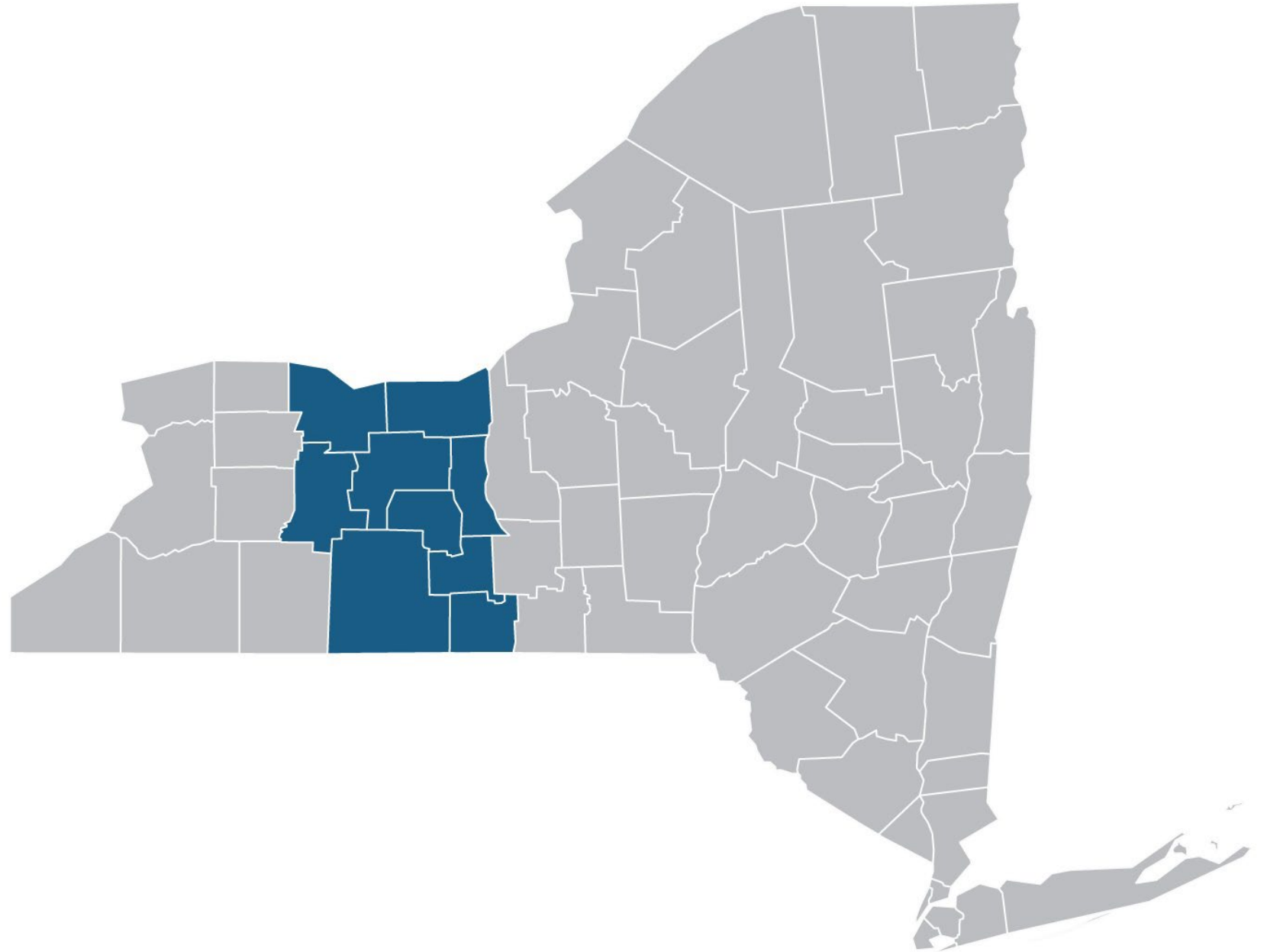
Regional Lead Summit

Regional Health Planning

- ✓ Inform – Create common understandings of the issues at a local level
- ✓ Collaborate – Join with cross-sector partners to reach consensus on the issue and plan appropriate interventions
- ✓ Transform – Lead and/or support initiatives

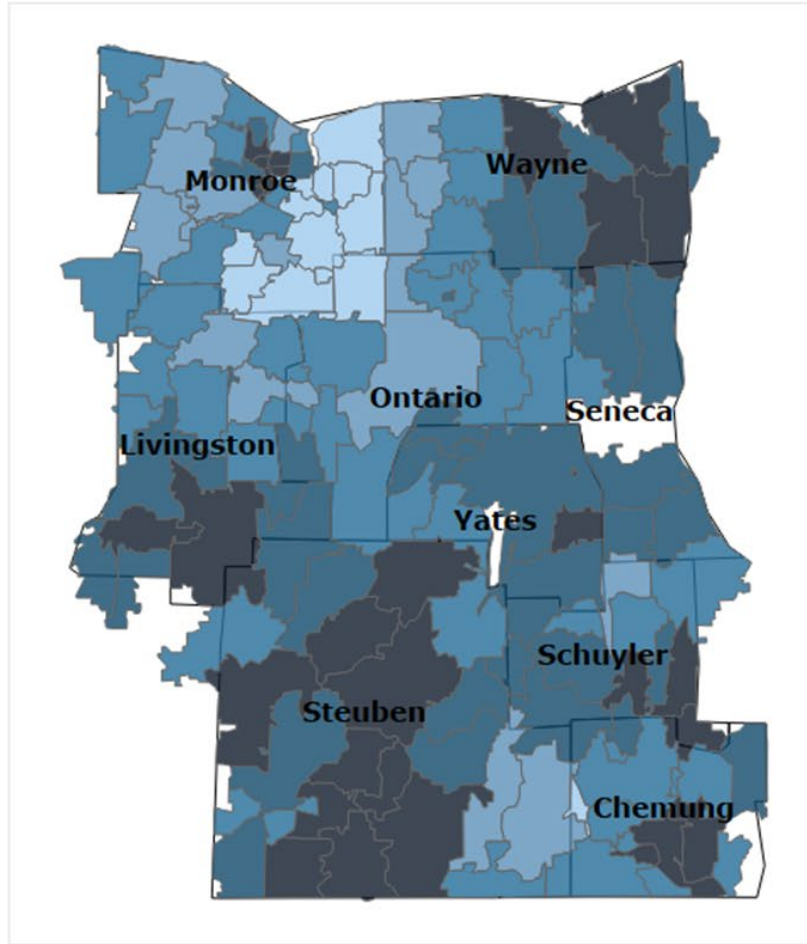


**Regional
reach and
more**

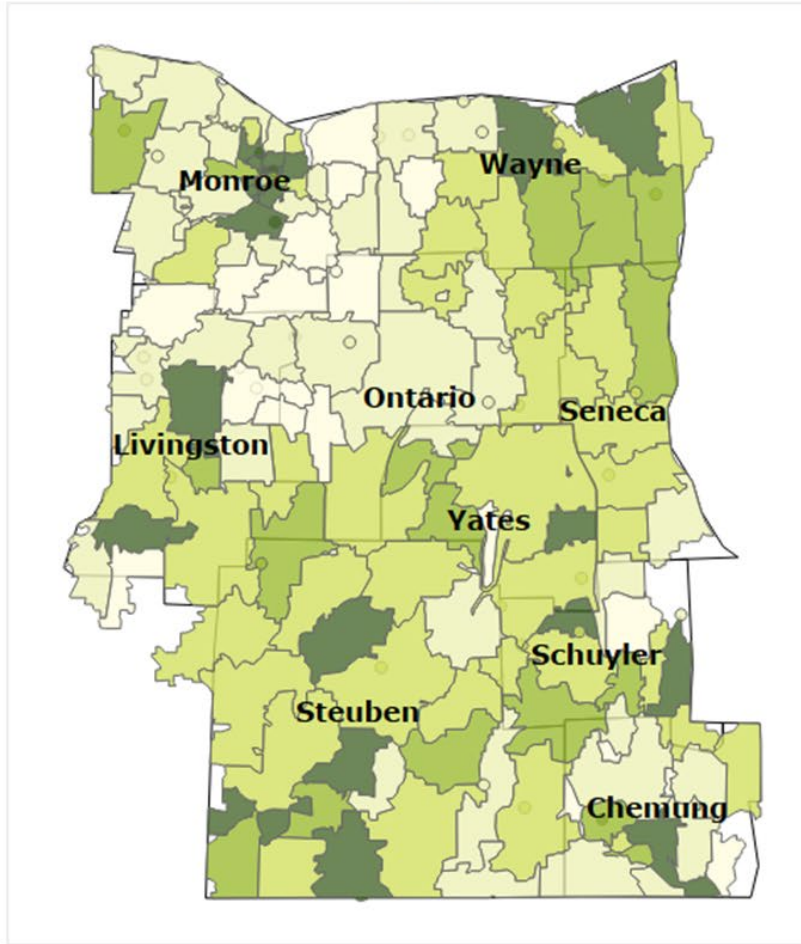


SES & Poverty Rate Comparison - Zip Code

SES Index



Poverty Rate

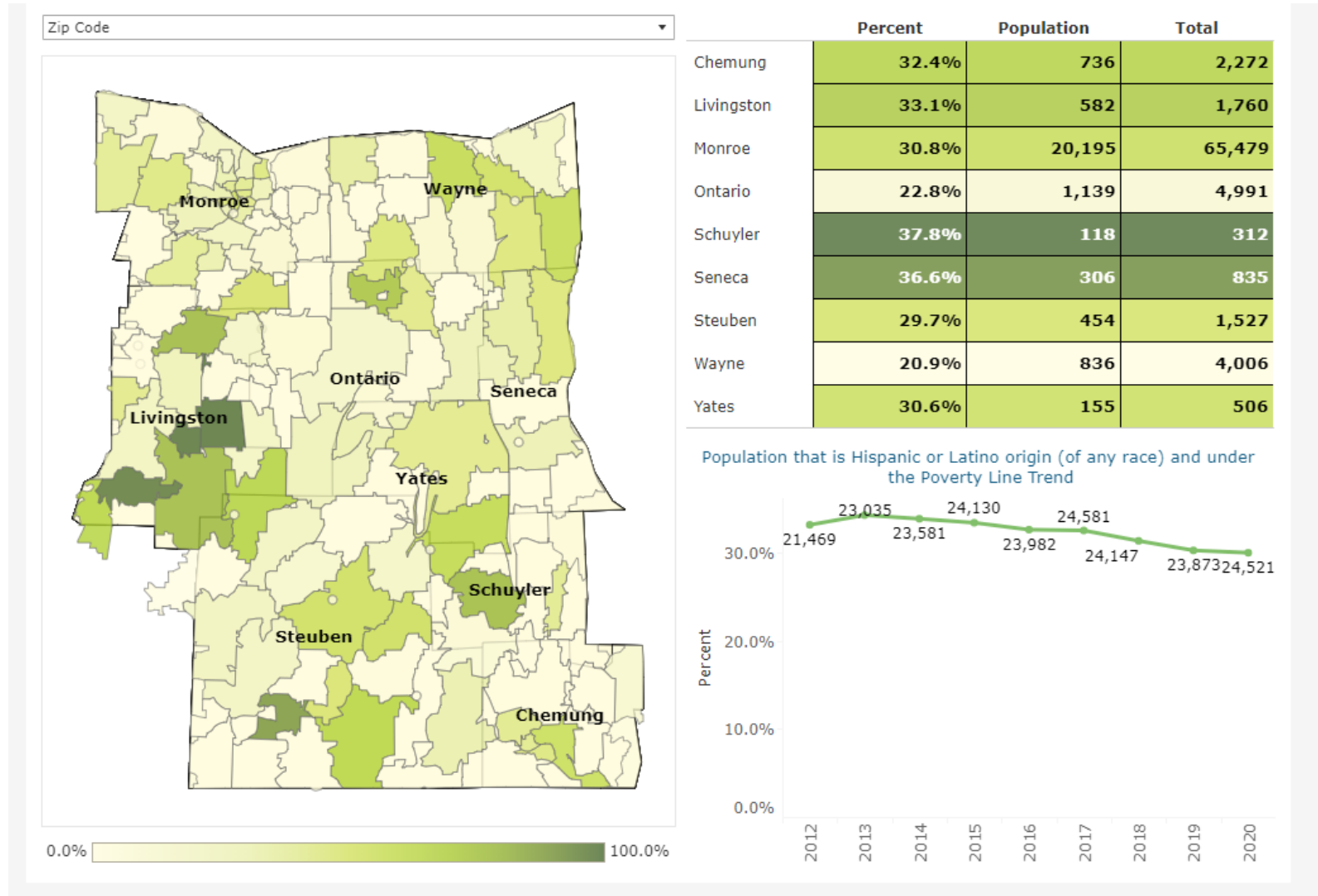


1 5 0-5% 5-10% 10-15% 15-20% >20%

Source: Socioeconomic Status (SES) Index developed by Common Ground Health using American Community Survey (ACS), 2016 - 2020 5 Year Estimates

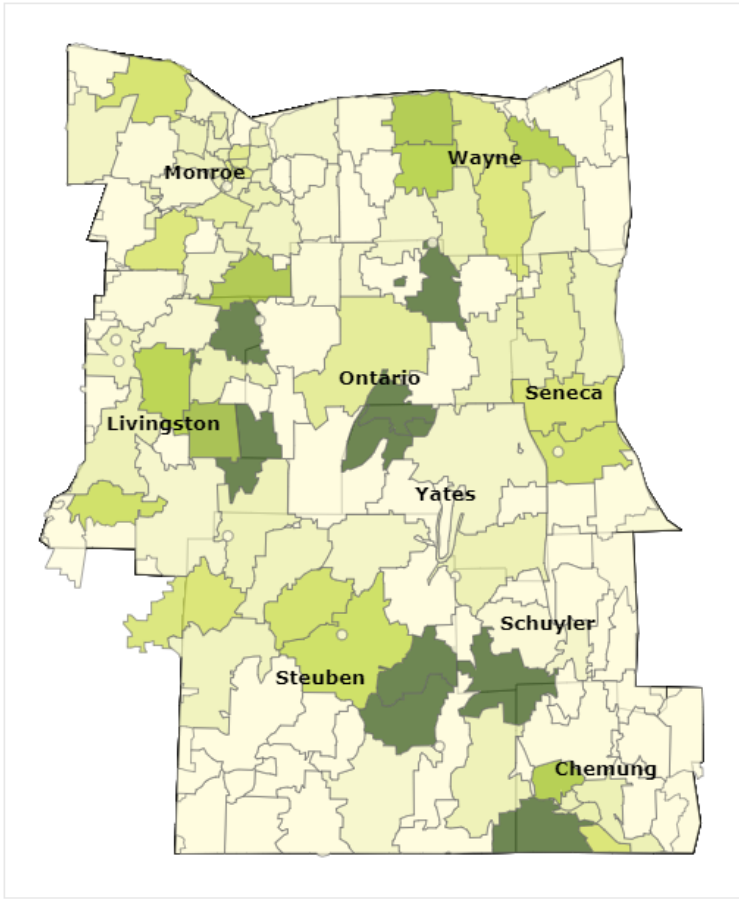


Hispanic/Latino poverty rates, 2020



Black/African American poverty rates, 2020

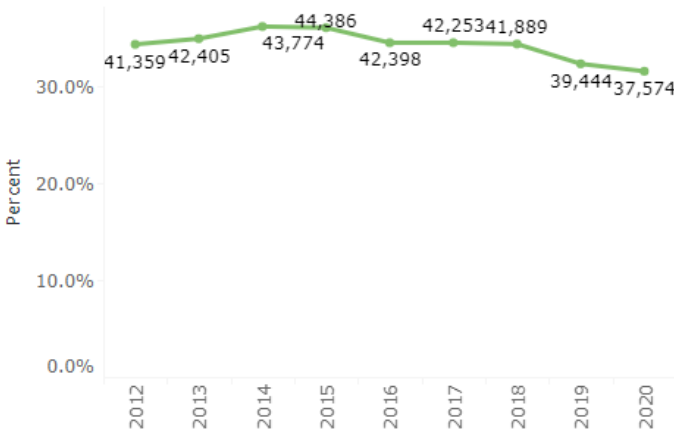
Zip Code



0.0% 100.0%

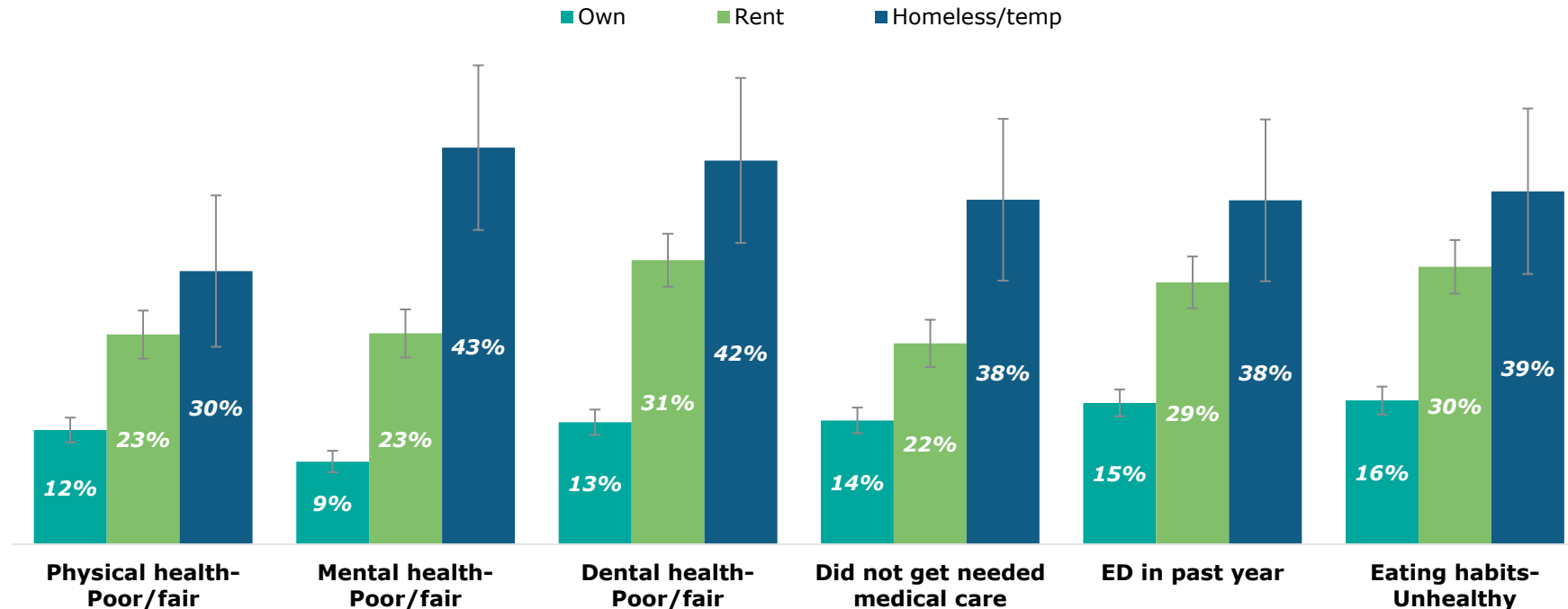
	Percent	Population	Total
Chemung	30.3%	1,121	3,704
Livingston	37.2%	308	828
Monroe	31.6%	34,152	108,034
Ontario	21.8%	489	2,246
Schuyler	12.7%	14	110
Seneca	30.8%	140	455
Steuben	34.2%	488	1,428
Wayne	37.9%	795	2,098
Yates	44.1%	67	152

Population that is Black or African American and under the Poverty Line Trend



Housing status is related to broad range of health indicators

Health indicators by housing status (Finger Lakes Region)



Source: My Health Story survey 2018; Analysis by Common Ground Health incorporates weighting to reflect demographic of Finger Lakes region
Data shown at 95% confidence interval

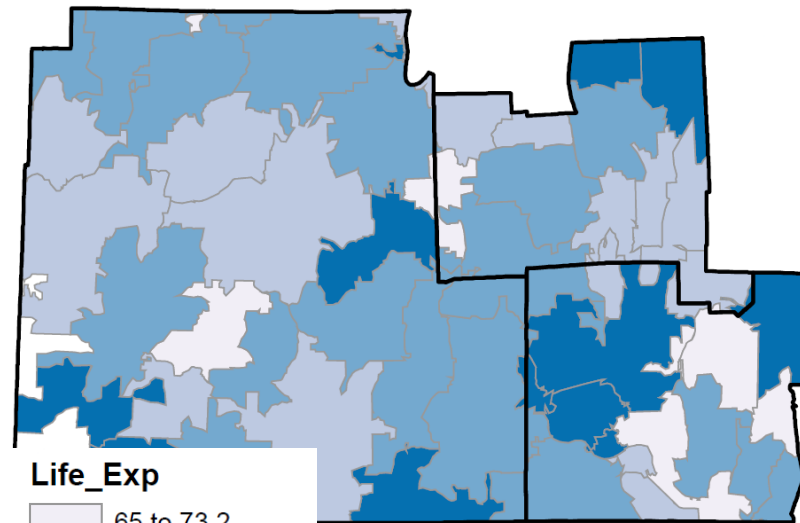
Percentage of residents served by community water systems with optimally fluoridated water

Reg- 2 Finger Lakes				
Chemung	78,908	87,980	89.7	
Livingston	23,509	50,766	46.3	
Ontario	70,947	90,721	78.2	
Schuyler	0	7,055	0.0*	
Seneca	3,283	25,030	13.1	
Steuben	13,457	48,876	27.5	
Wayne	71,291	83,487	85.4	
Yates	11,106	13,584	81.8	

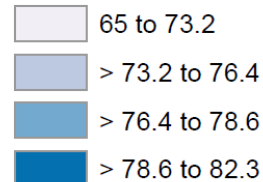
The Gap We're Trying to Close; Health and Well-being for All

All residents have equal
access to health and well
being and are expected to
live 80 years or more.

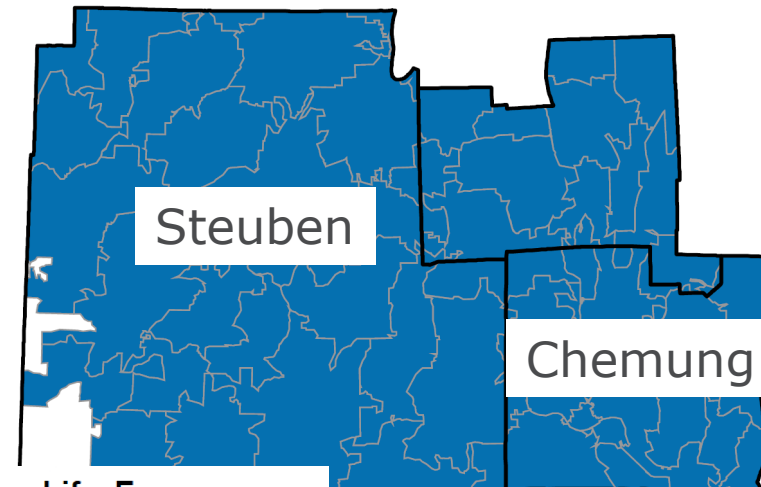
2017



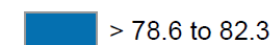
Life_Exp



2030



Life_Exp





Lead Testing & EBLL in Chemung County

RAPID HEALTH IMPACT ASSESSMENT

Elmira Housing

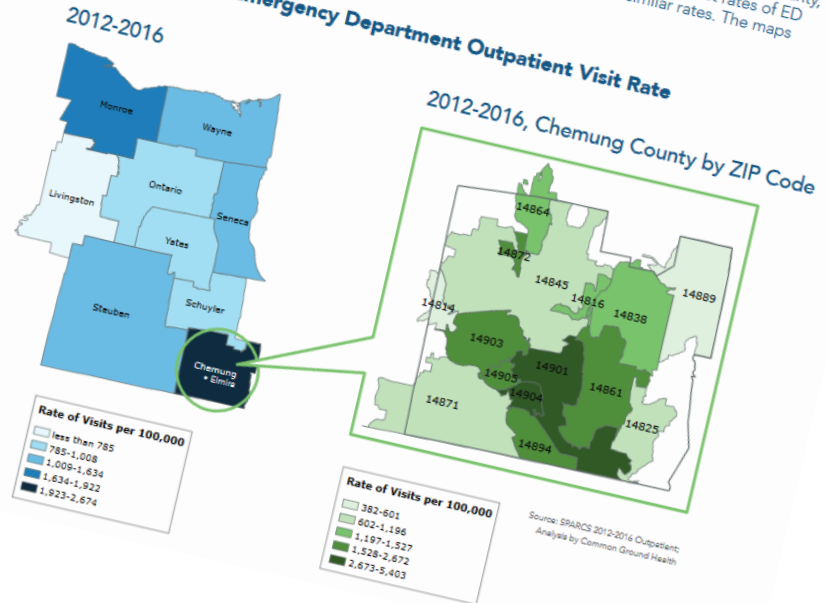


Section 2 : Respiratory Disease

2.2 RESPIRATORY DISEASE AND ELMIRA

Using data from the Statewide Planning and Research Cooperative System (SPARCS), we examined asthma-related emergency department (ED) outpatient visits in 2012-2016 coded with the International Classification of Diseases 10th Revision (ICD-10) code J45 for the nine county Finger Lakes region. The highest ED asthma rates per 100,000 population were found in Chemung County, with rates of 1,923-2,674 per 100,000. Within Chemung County, 14901 had the highest rates of ED visits with 2,673-5,403 per 100,000. Only neighboring ZIP code 14904 had similar rates. The maps below detail our regional findings:

Asthma-related Emergency Department Outpatient Visit Rate



ACCEL Clinic

Arnot Health,

Chemung
County Health
Department,

EOP, Inc., and

LECOM

The clinic is
underwritten by
Excellus
BlueCross
BlueShield





All of our children deserve an equal opportunity to live a long and healthy life

Questions?

