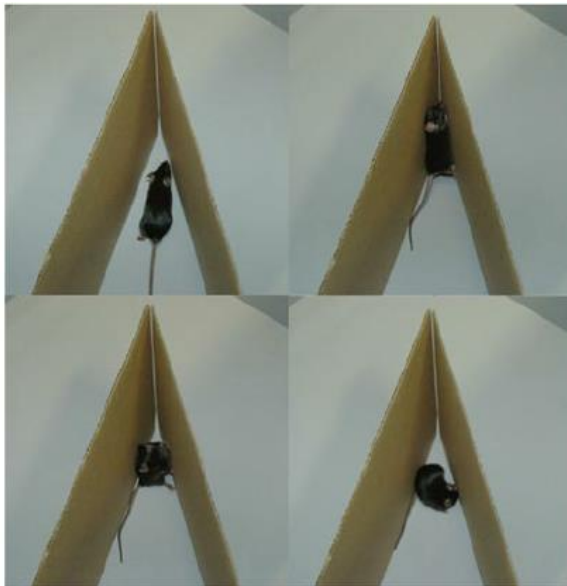


CORNER TEST

Corner test is used to detect unilateral abnormalities of sensory and motor functions in the stroke model. While in its home cage, mouse is placed between two boards each with dimension of 30×20×1 cm³. The edges of the two boards are attached at a 30° angle with a small opening along the joint between the two boards to encourage entry into the corner. The mouse is placed between the two angled boards facing the corner and half way to the corner. When entering deep into the corner both sides of the vibrissae are stimulated together. The mouse then rears forward and upward, then turns back to face the open end. The non-ischemic mouse turns either left or right, but the ischemic mouse preferentially turns toward the non-impaired, ipsilateral (right) side. The turns in one versus the other direction are recorded from ten trials for each test. Turning movements that were not part of a rearing movement are not scored. A total of 10 trials are recorded per each animal pre-operatively and on indicated days. Testing will take place at three different time points, pre stroke surgery, and 24 and 48 hrs. post stroke.



CORNER TEST

Material	- Large mouse cage - 2 boards (30x20x1 cm) - Adhesive tape or glue
Procedure	- pre-testing, post-operative testing at anytime
Measurement	- Turns and turn direction