



Finger Lakes Health Systems Agency

What's Goin' On with Nuestra Salud **African American and Latino Health Status in the Rochester**

**Candice A. Lucas, Director, Community Health Services, Center for
Community Health and African American Health Coalition Chair**

**Gladys Pedraza-Burgos, COO, Ibero-American Action League and Latino
Health Coalition Chair**

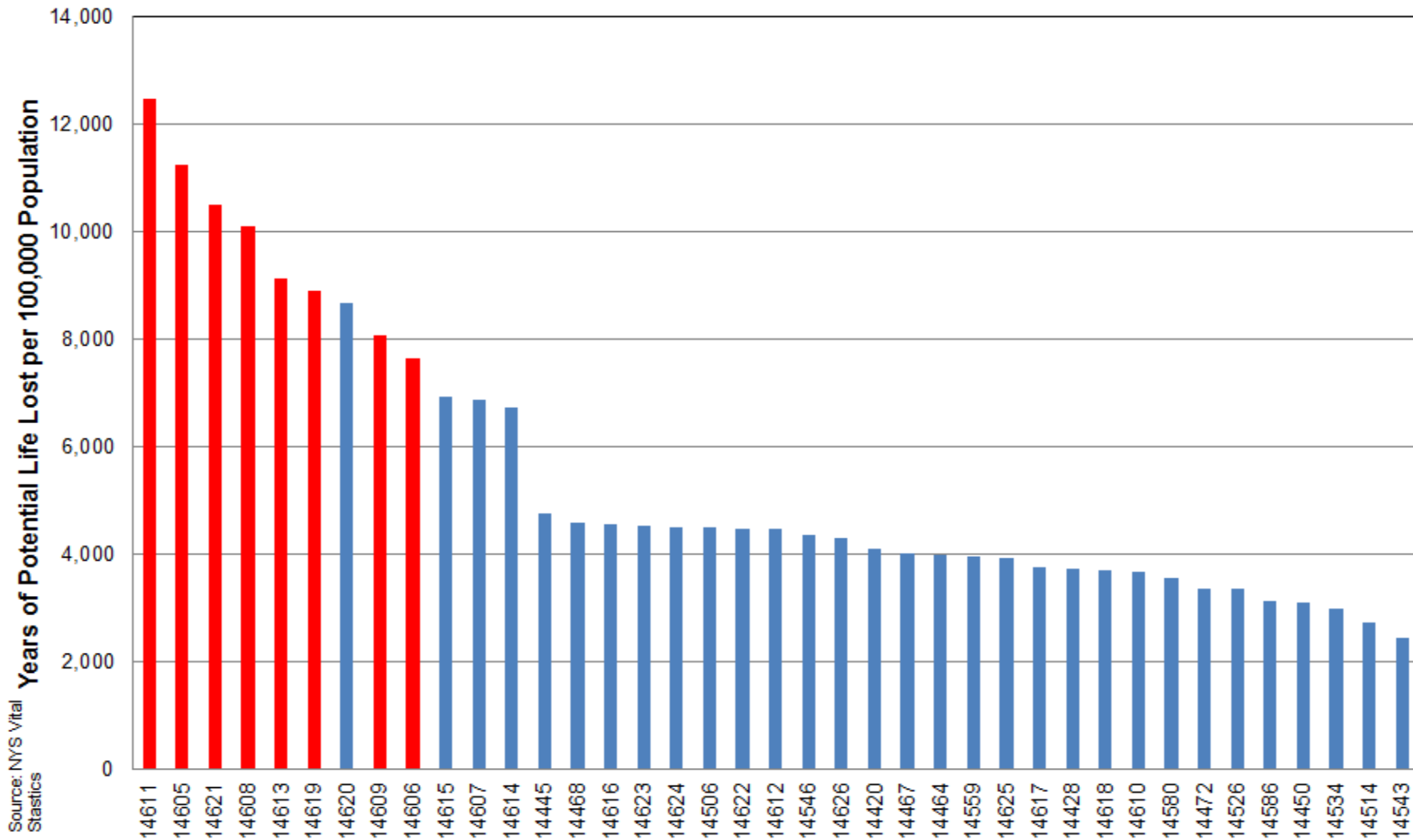
Wade Norwood, FLHSA Chief Program Officer

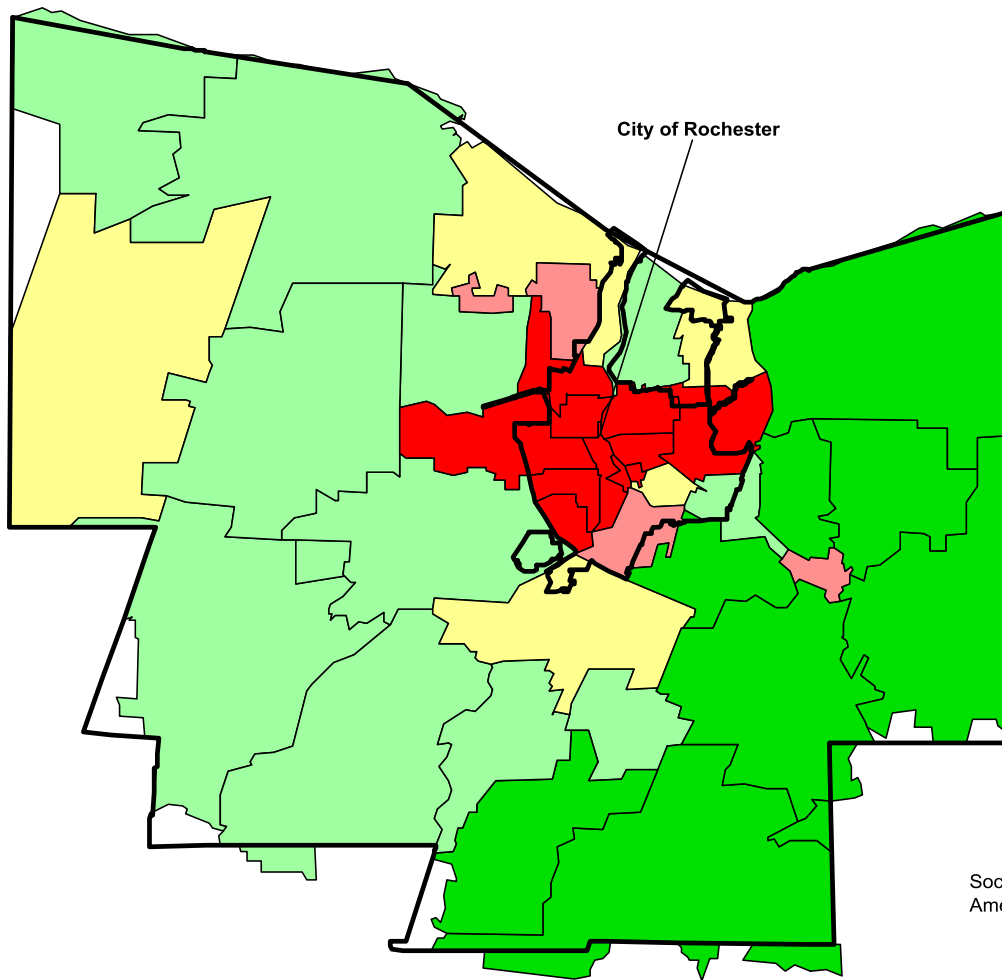
March 5, 2015

Presentation Goals

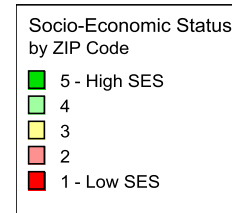
- Years of Potential Life Lost
- The Social Determinants of Health
- Local Health and Health Disparities Data
- Community Action to Eliminate Disparities

Years of Potential Life Lost by Monroe County Zip Code, All Races 5 Year Average ('06-'10)



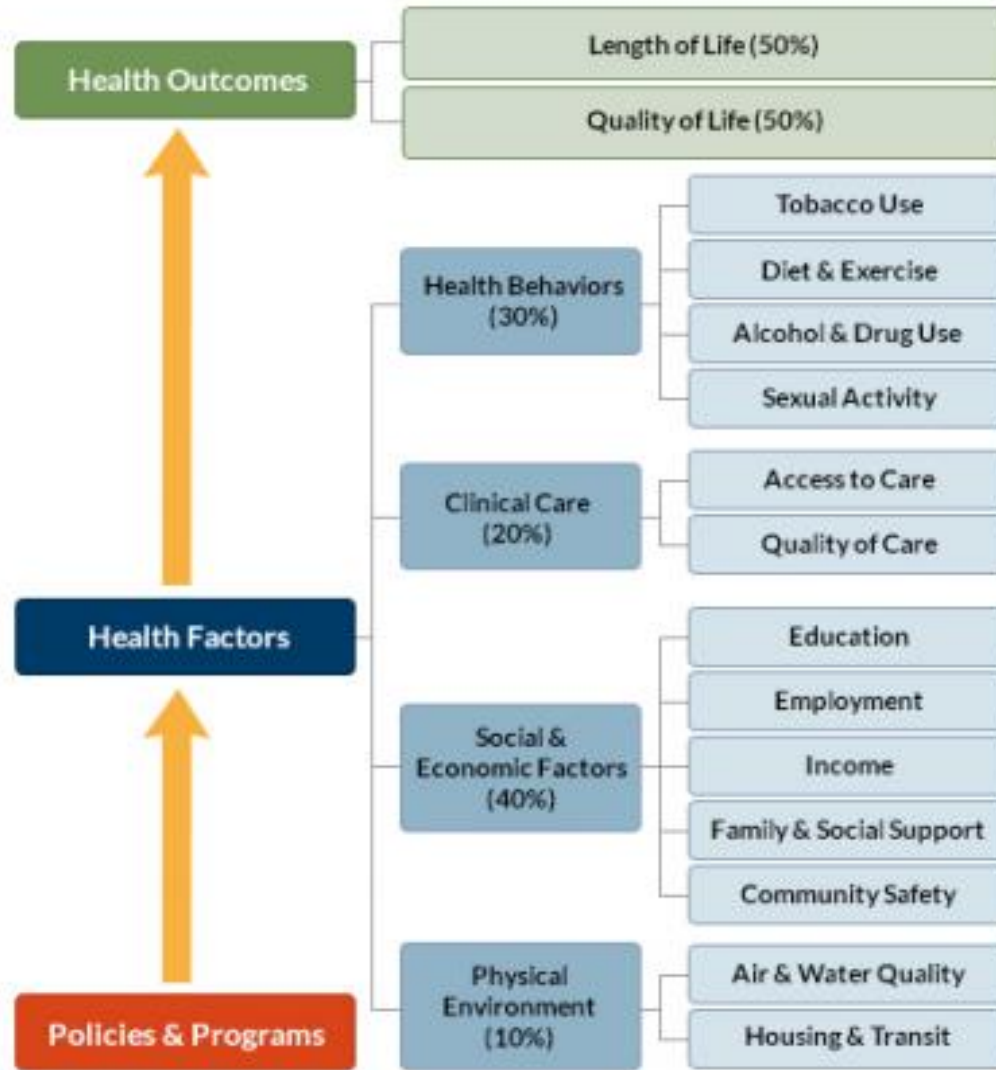


**ZIP Code
Socio-Economic Status
Monroe County**



Socio-economic Status based on 2010 Census and American Community Survey data for each ZIP code

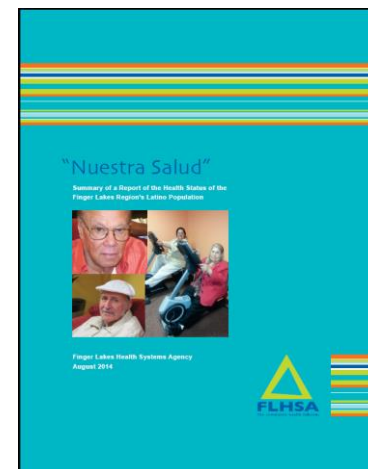
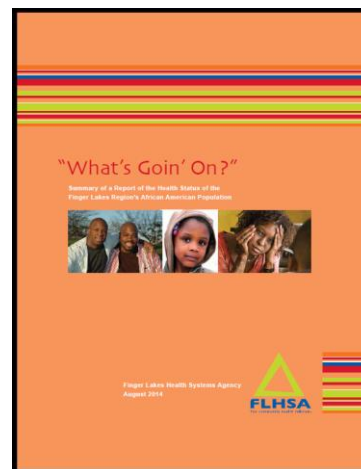
County Health Rankings and Road Map



A collaboration of Robert Wood Johnson Foundation and University of Wisconsin Population Health Institute

FLHSA's African American and Latino Health Coalitions

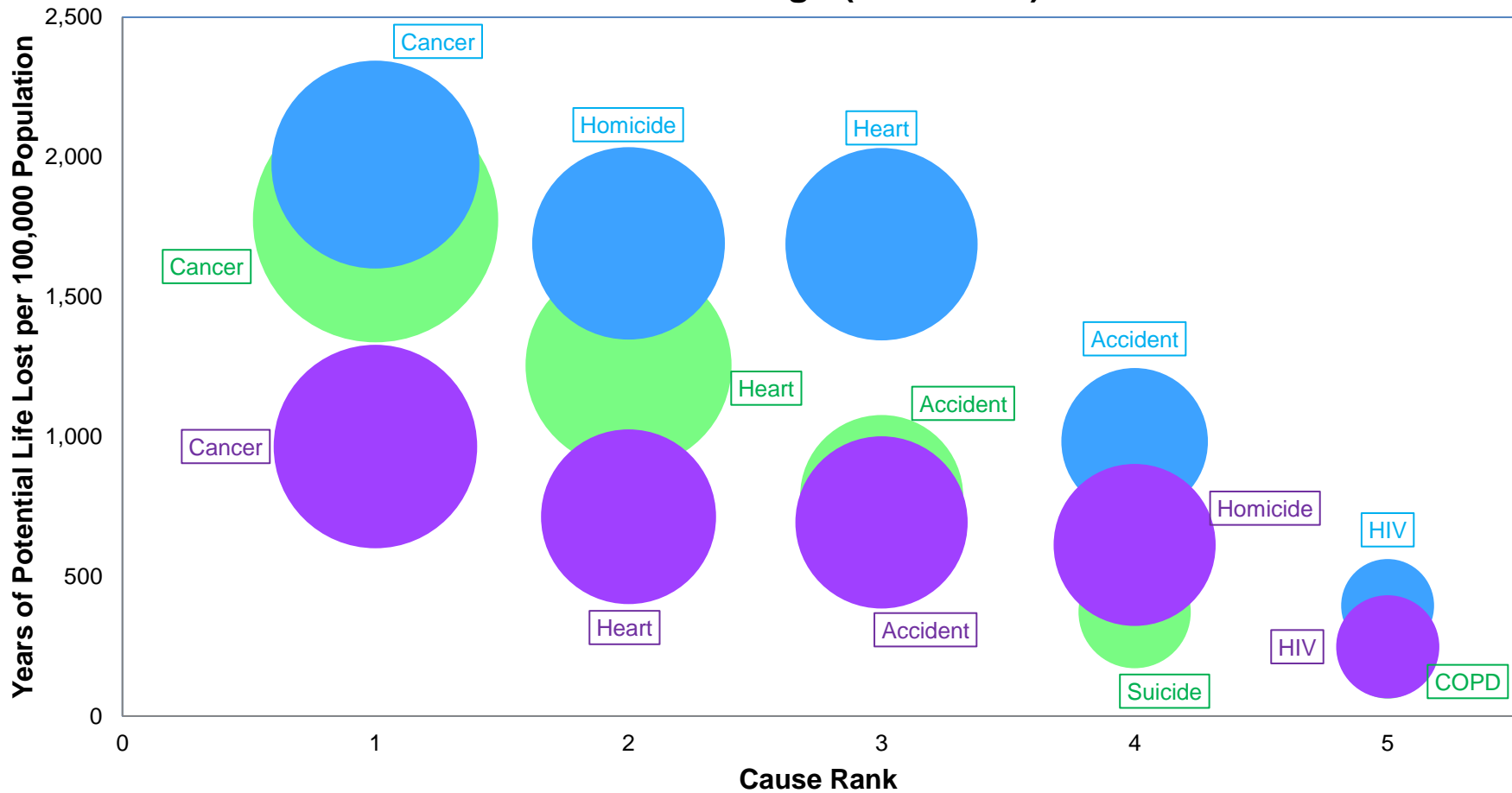
- The 2014 editions of "What's Goin' On" and "Nuestra Salud" provide a clear view of the health of the region's African American and Latino communities and of the nature of health disparities.
- These reports demonstrate that "place matters" in health outcomes and that those who residing in Rochester's poorest neighborhoods experience higher rates of premature death.



Leading Causes of YPLL by Race/Ethnicity

AAHC Focus Area

5-Year Average (2006-2010)



Data are age-sex adjusted to the US 2000 population.
 Years of Potential Life Lost (YPLL) based on deaths before age 75.
 Bubble Size represents proportion of total YPLL due to a particular cause.
Rankings exclude perinatal death
 Whites and African Americans are non-Latino
 Focus Area = ZIP codes 14605, 14606, 14608, 14609, 14611, 14613, 14619, 14621
 Data Source: NYS Vital Statistics

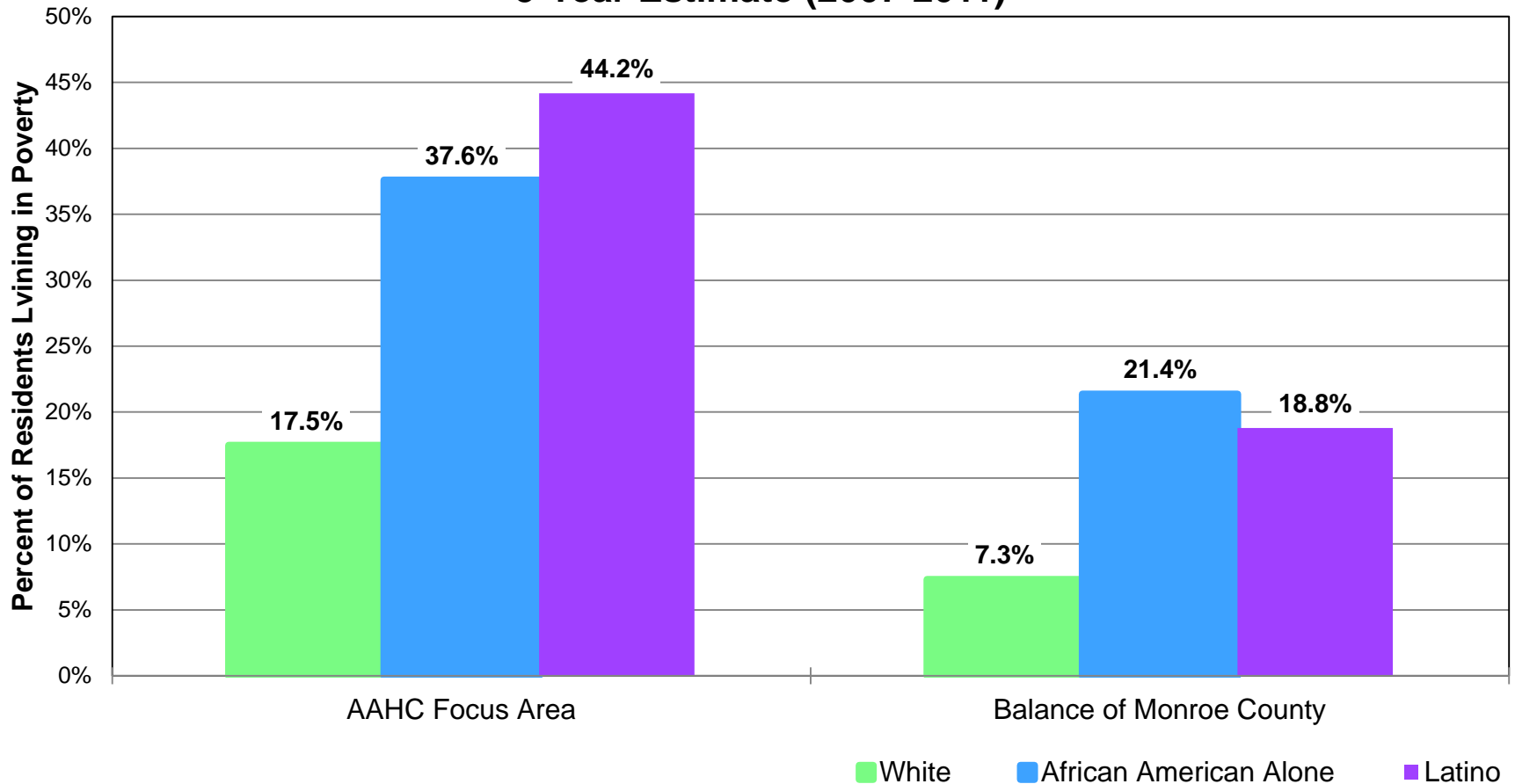
● White ● African American ● Latino

Finger Lakes Health Systems Agency

Percent of Residents Living in Poverty by Race/Ethnicity and Geography

Monroe County

5-Year Estimate (2007-2011)

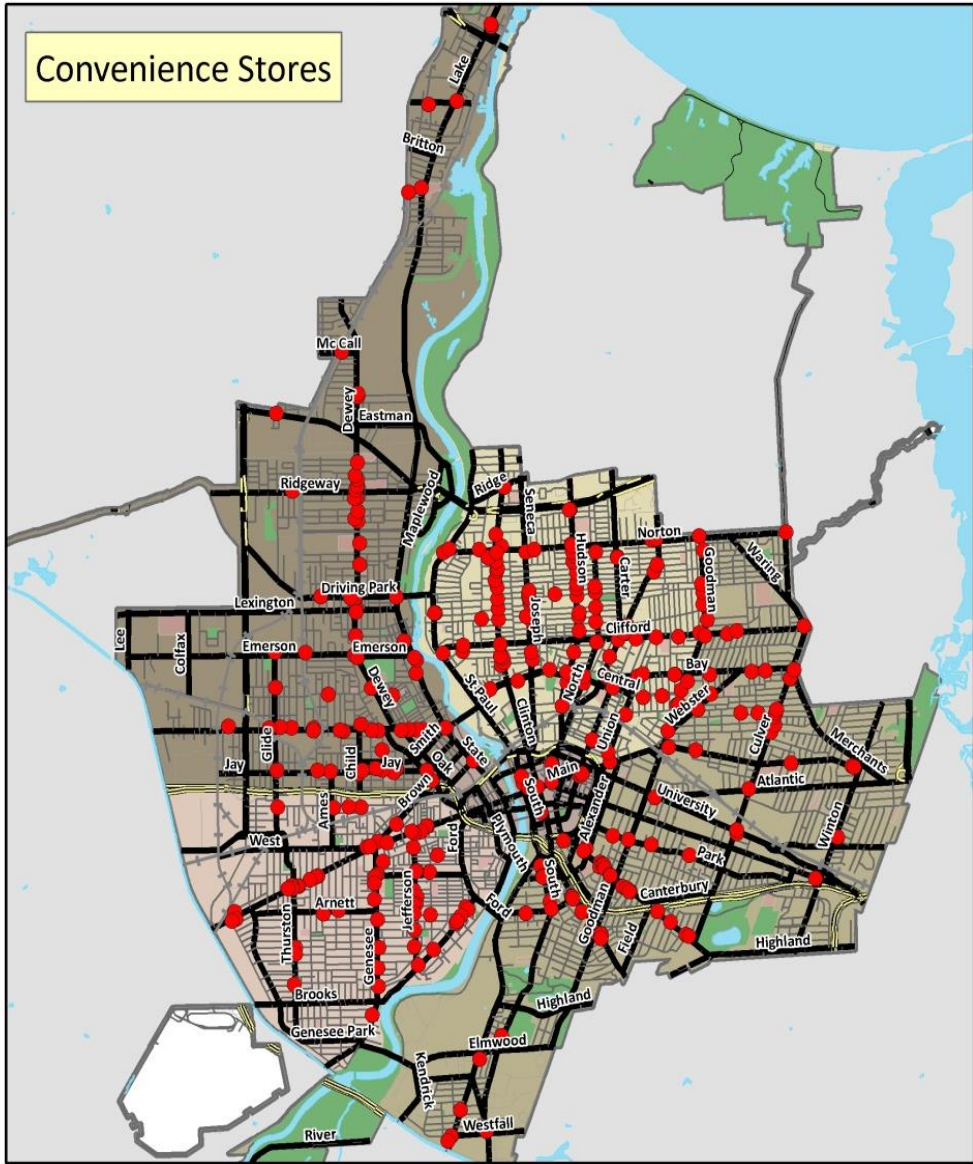


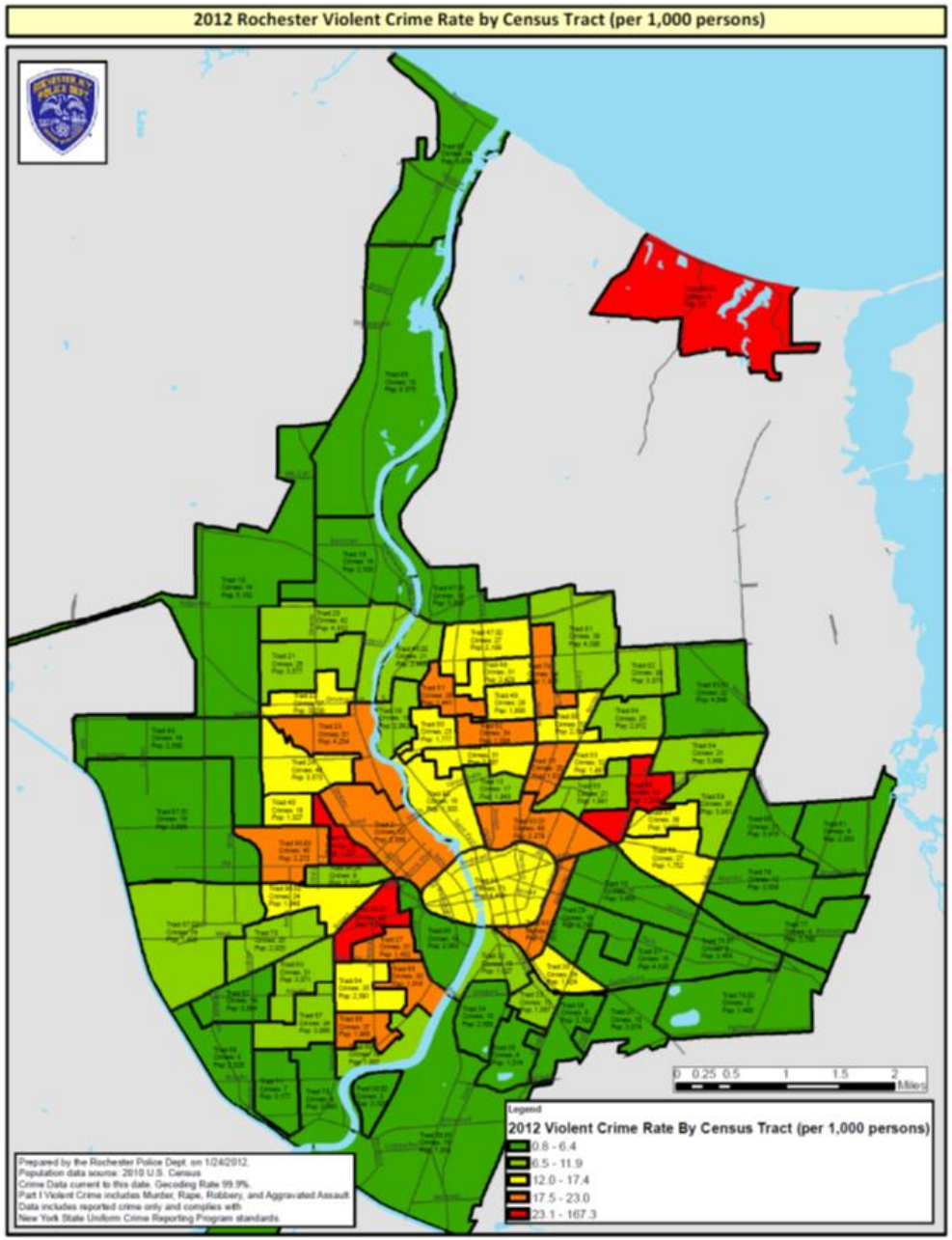
Whites are non-Latino

Focus Area = ZIP codes 14605, 14606, 14608, 14609, 14611, 14613, 14619, 14621

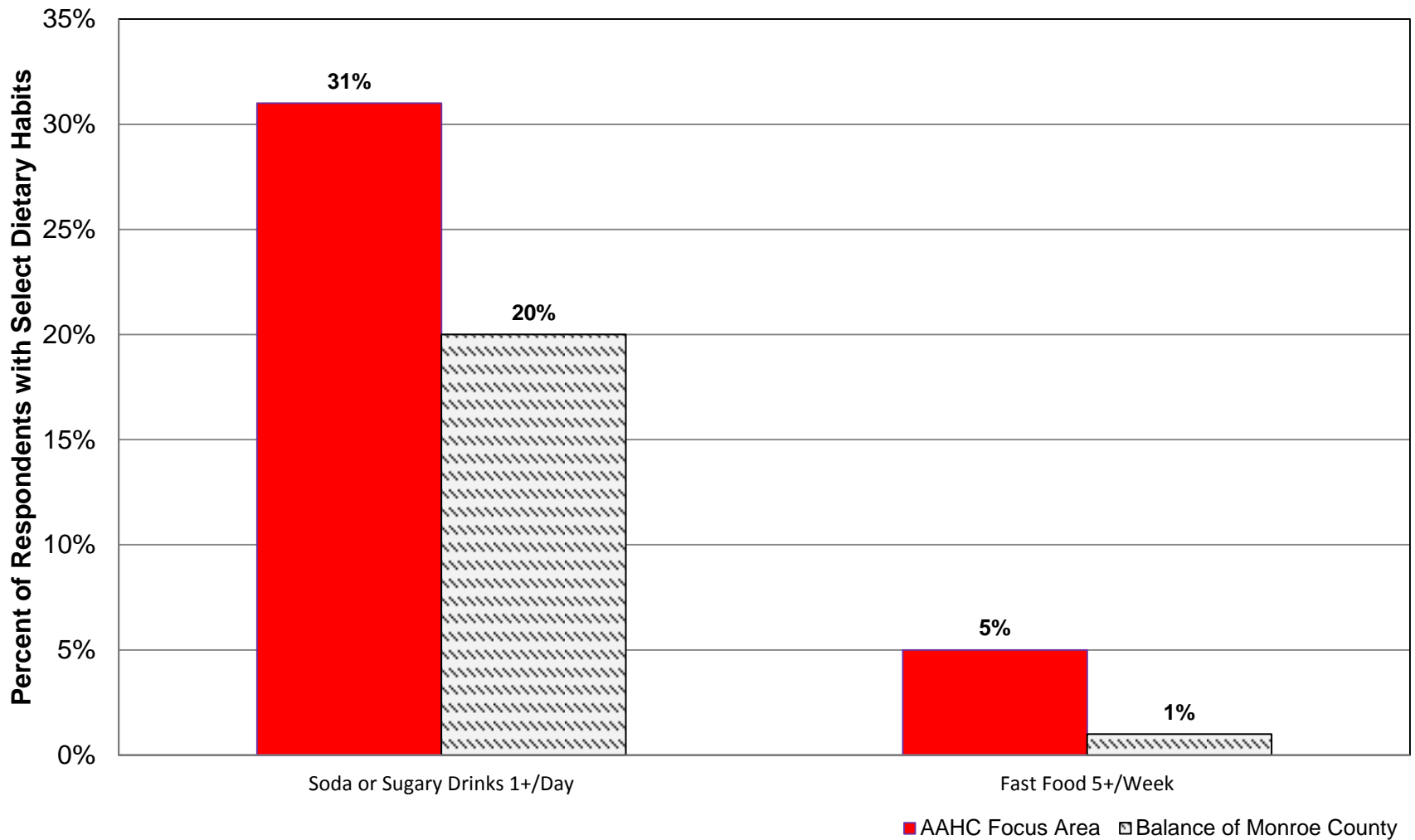
Data Source: American Community Survey, 5-yr average, 2011

Finger Lakes Health Systems Agency





Percent of Respondents Reporting Select Dietary Habits By Geography, Monroe County, 2012



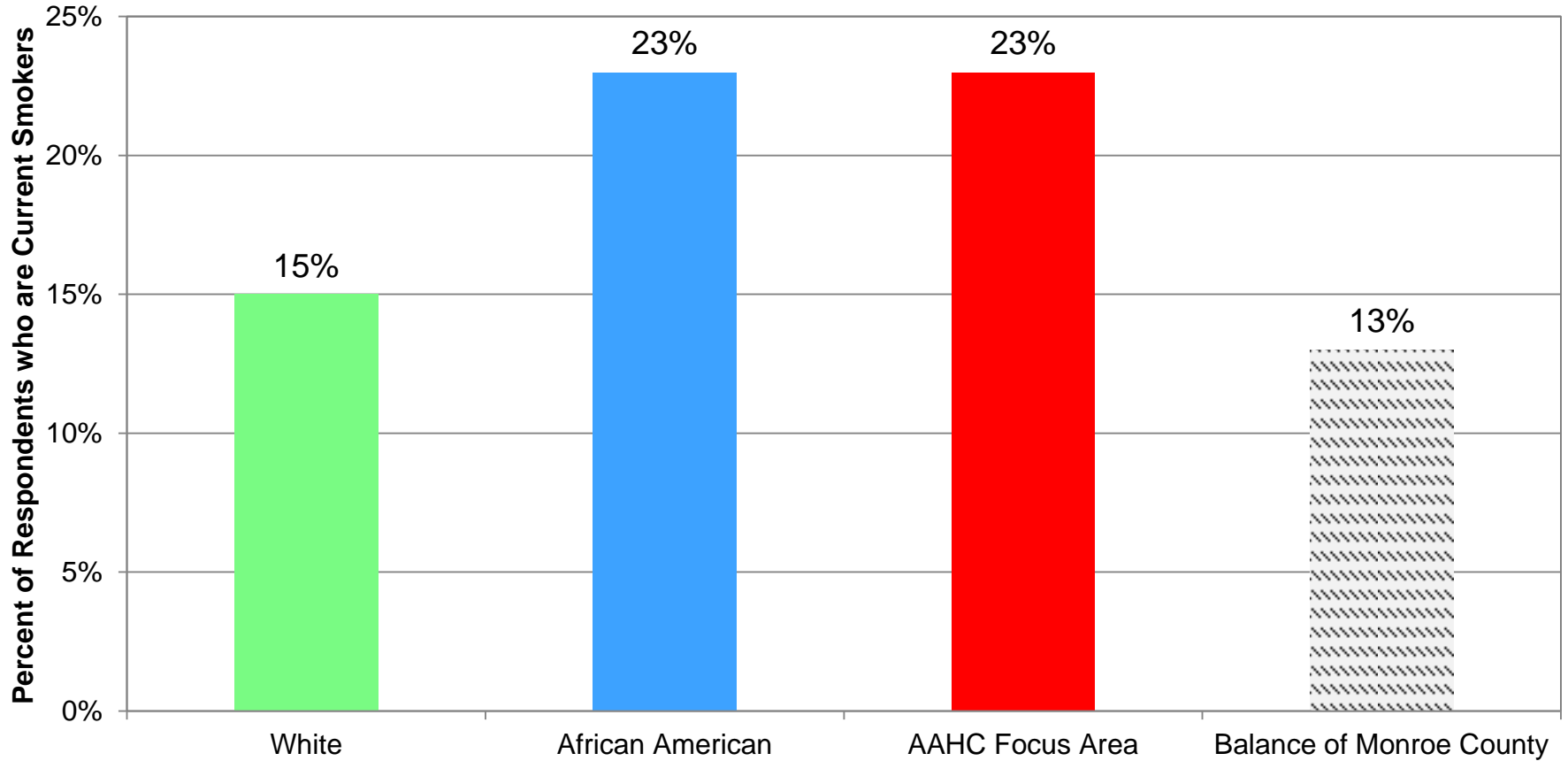
Differences are statistically significant (per MCDOH)

Focus Area = ZIP codes 14605, 14606, 14608, 14609, 14611, 14613, 14619, 14621

Data Source: MCDOH AHS, 2012

Finger Lakes Health Systems Agency

Percent of Respondents Who are Current Smokers By Race/Ethnicity and Geography Monroe County, 2012



Differences (White vs. African American and Focus Area vs. Balance of County) are statistically significant (per MCDOH)

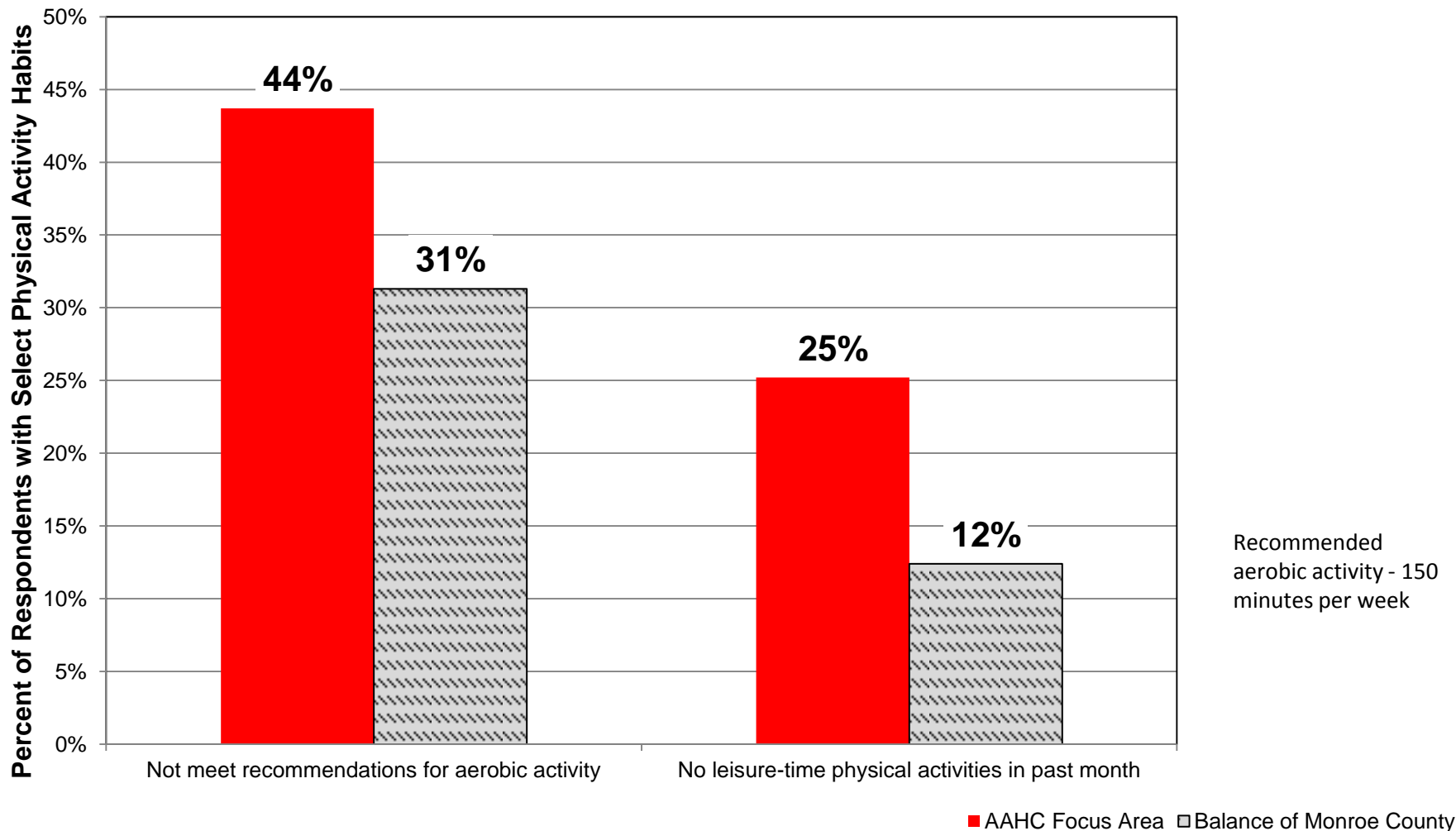
Whites and African Americans are non-Latino

Focus Area = ZIP codes 14605, 14606, 14608, 14609, 14611, 14613, 14619, 14621

Data Source: MCDOH AHS, 2012

Finger Lakes Health Systems Agency

Percent of Respondents With Select Physical Activity Habits by Geography, Monroe County, 2012



Differences are statistically significant (per MCDOH)
 Focus Area = ZIP codes 14605, 14606, 14608, 14609, 14611, 14613, 14619, 14621
 Data Source: MCDOH AHS, 2012

Finger Lakes Health Systems Agency

Coalition Members in Action

- Community Engagement
 - Churches
 - Barber shops/beauty salons
 - Health screenings at community events
- Consumer Education
 - Worksites
 - Health Ambassadors
- Policy Advocacy
 - City “Corner Store” Policy
 - Transit Center Bus Stop Placement



Healthy People 2020 SDOH Framework

“The social determinants of health are the conditions in which people are born, grow, live, work and age. These circumstances are shaped by the distribution of money, power and resources at global, national and local levels.”

- World Health Organization

