

Community-Based Participatory Research (CBPR) Training Program

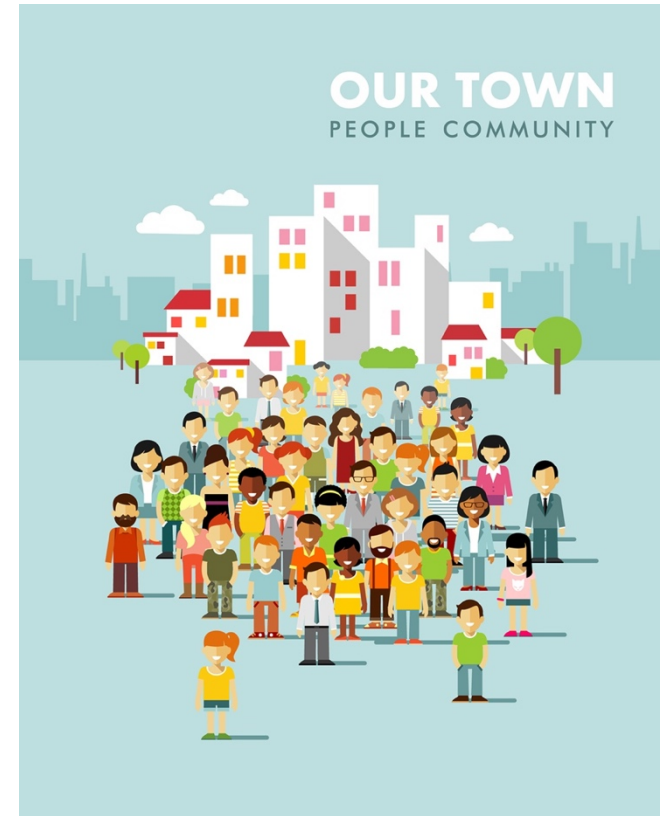
Community-Based Participatory Research Training

Program: Aims to train University of Rochester researchers (faculty, trainees and students) and community members in community-engaged research using community-based participatory research (CBPR) principles.

The course offers an introduction to CBPR principles from the foundations, to communication, funding and sustainability. Through the program, participants will form relationships and research teams to co-develop and submit proposals for the CBPR Pipeline-to-Pilot Awards. The training will be offered **from September 2019 through April 2020** and co-facilitated by community partners and University of Rochester researchers. Facilitators include Sherita Bullock (Healthy Baby Network), Brooke Levandowski (Ob/Gyn), Tiffany Filloyd (Public Good Projects), Sarah Farash Alexander, Diane Morse (Psychology), Charles Kamen (Cancer Control), Lori Dewindt and Jenna Stewardson (National Center for Deaf Health Research), George Moses (North East Area Development) and Silvia Sorensen (Warner School of Education).

Registration for the Program is open until August 26 at [CBPR Program Registration](#).

Contact [Indrani Singh](#) for questions and to request any accommodations during the program. **Program sessions will take place on Tuesday evenings from 5:30-8PM at the Center for Community Health & Prevention and other community locations.** Free parking is available on-site at all locations. The program is available at no cost to participants.



Sponsored by Center for Community Health & Prevention and Clinical & Translational Science Institute (URMC)

SESSION	FACILITATOR	CBPR Content Objectives	Relationship Building Obj.	SCHEDULE
Intro dinner				5:30-7:30PM Tuesday, Sept. 10
1. CBPR – Getting Grounded	Sherita Bullock	(i) Understand the rationale and key principles of CBPR		5:30-8PM Tuesday, Sept. 17
	Indrani Singh		(i) Getting to know each other as people (ii) Establishing group norms (iii) What skills/abilities do we bring to CBPR partnerships	5:30-6:30PM Tuesday, Sept. 24
2. CBPR in the Real World – What’s a Good Research Question?	Jose Perez-Ramos and community partner	(i) What hinders trust in CBPR partnerships? (ii) How do we build and maintain trust?		5:30-8PM Tuesday, Oct. 1
	Indrani Singh		(i) Building trust for the group (ii) Assumptions about the group (iii) Learn strategies for collaborative listening and speaking.	5:30-6:30PM Tuesday, Oct. 8

3. Developing a CBPR Partnership – Creating the “Glue” for Relationship Building	Brooke Levandowski and Tiffany Lloyd	(i) How can we resolve conflict? (ii) How do we address power inequities?		5:30-8PM Tuesday, Oct. 15
	Indrani Singh		Exploring group dynamics: (i) How will the group resolve conflict? (ii) How do power dynamics play out in the group? (iii) Explore implicit bias and privilege.	5:30-6:30PM Tuesday, Oct. 22
4. Maintaining a CBPR Partnership – Spreading the “Glue” and Having it Stick	Sarah Farash Alexander	(i) Explore goodness of fit for the partnership based on shared values (ii) Discuss effective strategies for establishing principles and operating norms for the partnership		5:30-8PM Tuesday, Oct. 29
	Indrani Singh		(i) Revisit group norms – are we actually abiding by these? Do we need to make any changes? (ii) What are our group values?	5:30-6:30PM Tuesday, Nov. 5
5. Applying a CBPR approach through the entire research process/cycle	Diane Morse and _____	(i) What are issues to think about in research design for CBPR (ii) How do we include community and collaboration into the whole research process?		5:30-8PM Tuesday, Nov. 12

	Indrani Singh		<p>The art of communication:</p> <ul style="list-style-type: none"> (i) Verbalizing opinions and feelings in a group (ii) Listening to and acknowledging different viewpoints (iii) Making requests and responding effectively to criticism 	<p>5:30-6:30PM Tuesday, Nov. 19</p>
6. Disseminating Results of CBPR	Dr. Charles Kamen and Margarita	(i) Learn strategies for disseminating CBPR results to multiple target audiences/Map pathways for dissemination research results		<p>5:30-8PM Tuesday, Dec. 3</p>
	Indrani Singh		TBD as needed by group	<p>5:30-6:30PM Tuesday, Dec. 10</p>
7. Sustainability	Lori DeWindt and Jenna Stewardson (National Center for Deaf Health Research)	<ul style="list-style-type: none"> (i) Participatory, formative evaluation for improving and sustaining partnerships (ii) Effective strategies for weathering change 		<p>5:30-8PM Tuesday, Jan. 14</p>
	Indrani Singh		<ul style="list-style-type: none"> (i) Complete a timeline for moving forward (ii) Identify means for on-going communication 	<p>5:30-6:30PM Tuesday, Jan. 21</p>

<p>8+. Show Me the Money Trail - Securing and Distributing Funds</p>	<p>George Moses and Dr. Silvia Sorensen along with other grant writers</p>	<ul style="list-style-type: none"> (i) Identify funding resources for CBPR and your partnership (ii) Develop criteria to decide whether or not to respond to a given request for proposals (iii) Learn the fundamentals of grant writing (iv) Learn and practice strategies for collaboratively developing a CBPR proposal (v) Understand CBPR approach to budgeting for grants (vi) Plan for accountability and reporting (vii) Learn strategies for securing long-term funding 		<p>5:30-8PM Wednesday, Jan. 29</p> <p>Follow-up with sessions/workshops every two weeks:</p> <p>Feb. 10 Feb. 24 March 9 March 23 April 6</p>
--	--	---	--	---