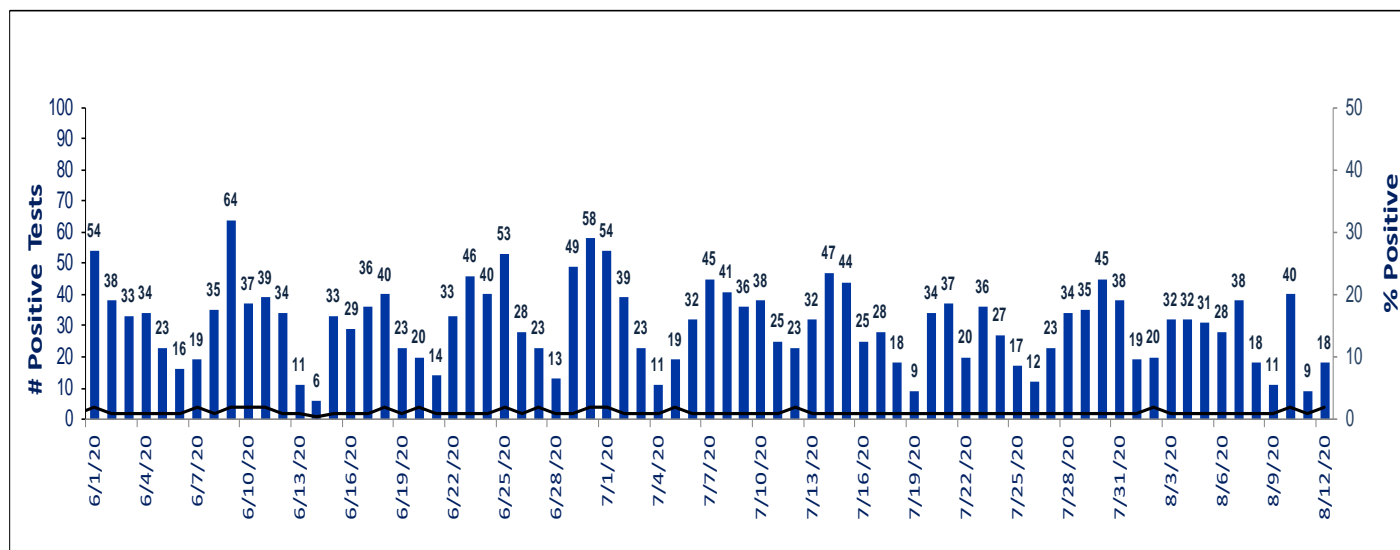


Monroe County COVID-19 Surveillance – Preliminary data as of August 12, 2020
Rochester Emerging Infections Program
Center for Community Health & Prevention, University of Rochester Medical Center

This is a preliminary report of COVID-19 cases, hospitalizations and deaths.
 Cumulatively, there were 5,256 laboratory confirmed cases, 880 hospitalizations, and 248 ICU admissions.
 278 deaths have been confirmed to date.

Preliminary daily count of new COVID-19 cases - Monroe County, June 1 - August 12, 2020



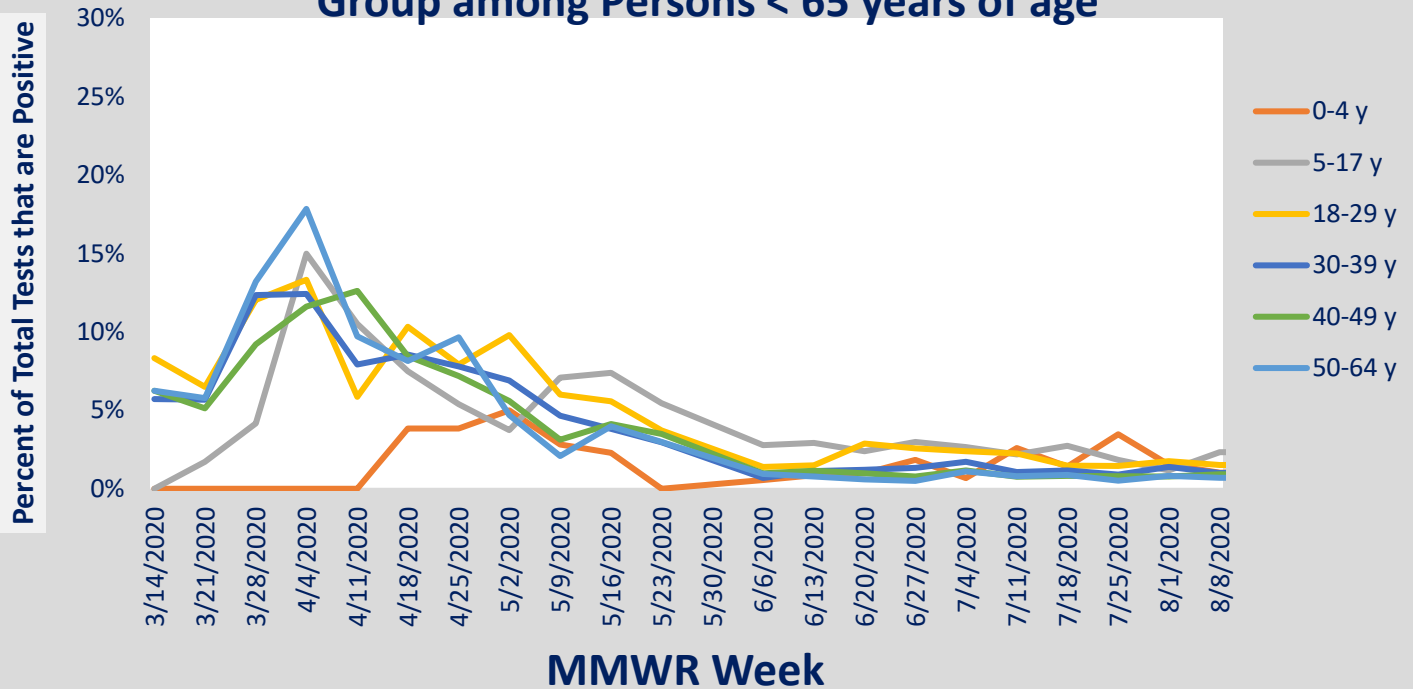
Data Source: Electronic Clinical Laboratory Reporting System, New York State. Bars represent the daily tests based on day of collection of the test and the black line indicates the percentage of all tests that were positive.

**Cumulative Data of Laboratory Confirmed COVID-19 Cases, Hospitalizations,
 ICU Admissions and Deaths in Monroe County**
Data as of August 12, 2020

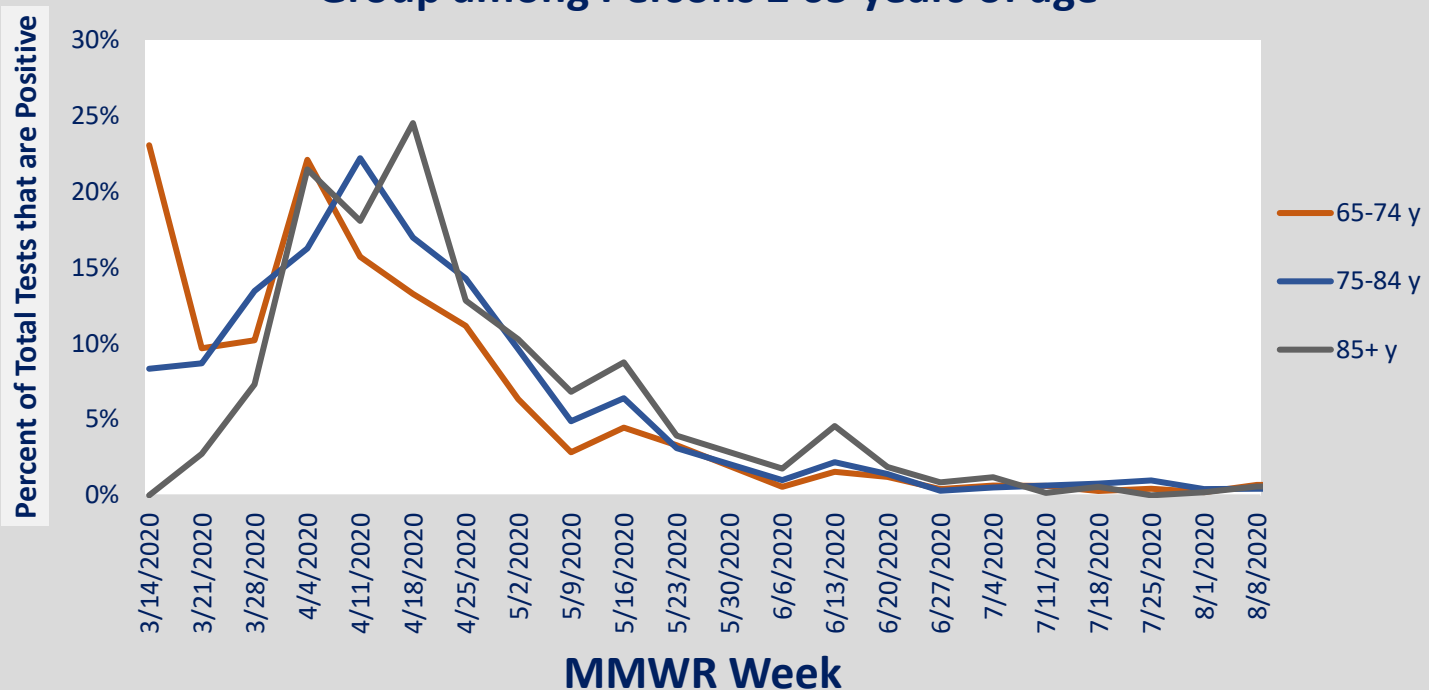
Age Group	Cases (N)	Case Rates (per 100,000 persons)	Hospitalized (N)	Hospitalized (% of Total Cases)	ICU Admissions (N)	ICU Admissions (% of Hospitalized Cases)	Deaths (N)	Case Fatality Rate (%)
0 to 4 y	40	98.5	2	5.0	0	0.0	0	0.0
5 to 17 y	214	188.4	8	3.7	0	0.0	0	0.0
18 to 29 y	1195	932.6	43	3.6	5	11.6	0	0.0
30 to 39 y	804	838.5	52	6.5	14	26.9	2	0.2
40 to 49 y	604	717.8	70	11.6	15	21.4	1	0.2
50 to 64 y	1038	682.7	208	20.0	67	32.2	16	1.5
65 to 74 y	508	698.2	194	38.2	72	37.1	45	8.9
75 to 84 y	410	1109.0	175	42.7	57	32.6	80	19.5
≥ 85 y	443	2418.1	128	28.9	18	14.1	134	30.2
Total	5256	707.9	880	16.7	248	28.2	278	5.3

Monroe County COVID-19 Surveillance – Preliminary data as of August 12, 2020
Rochester Emerging Infections Program
Center for Community Health & Prevention, University of Rochester Medical Center

Percent of Total Tests that are Positive by Week and Age Group among Persons < 65 years of age

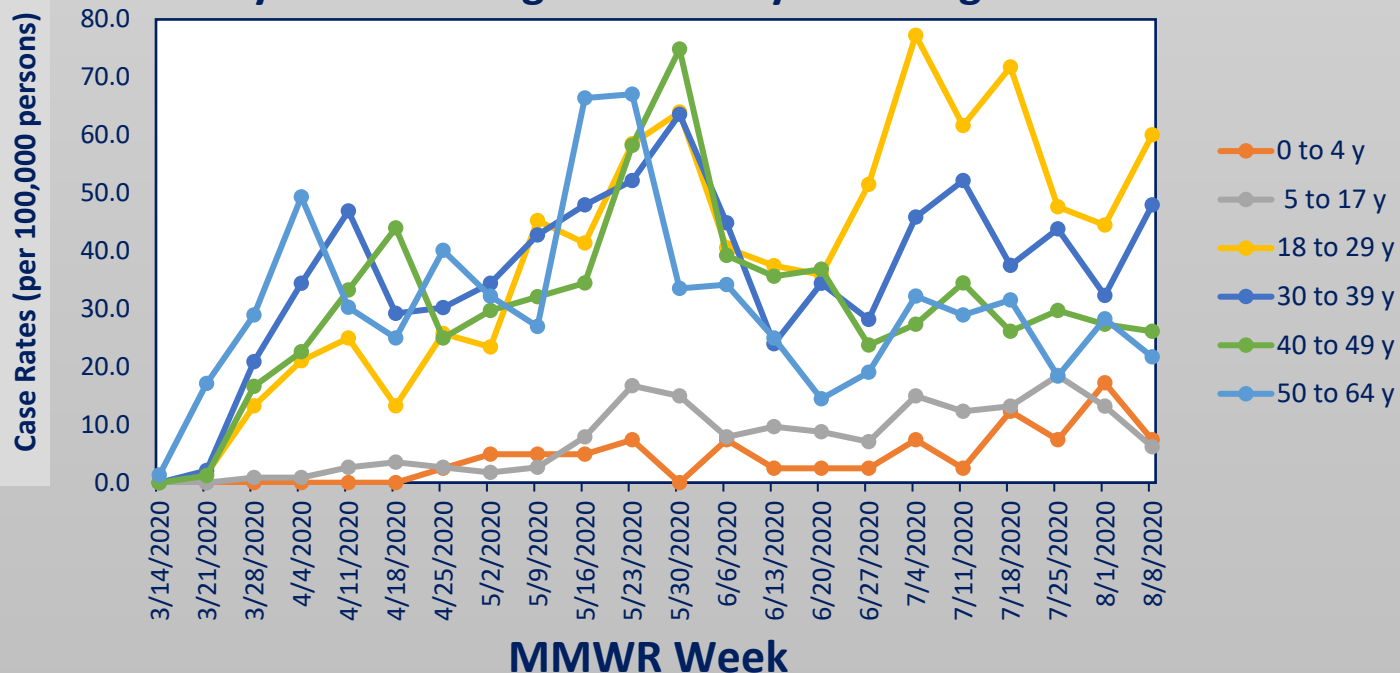


Percent of Total Tests that are Positive by Week and Age Group among Persons ≥ 65 years of age

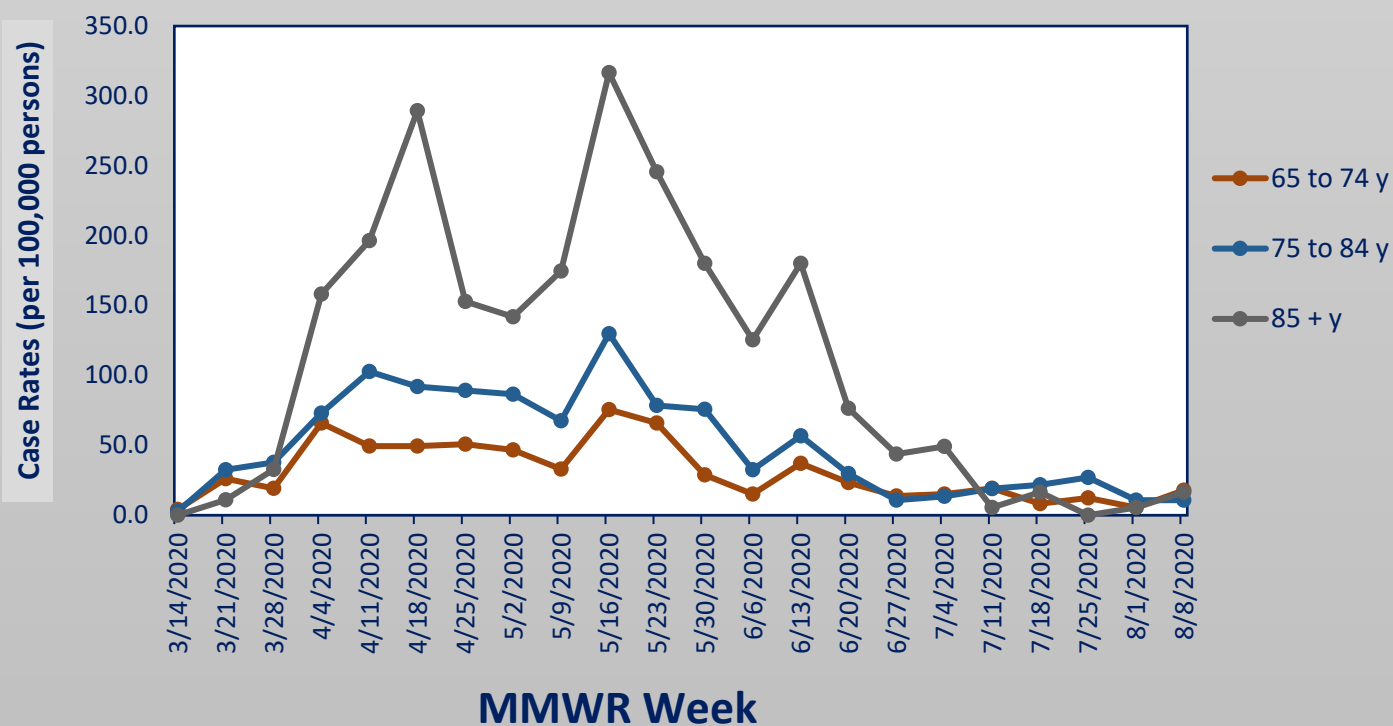


Monroe County COVID-19 Surveillance – Preliminary data as of August 12, 2020
Rochester Emerging Infections Program
Center for Community Health & Prevention, University of Rochester Medical Center

COVID-19 Preliminary Case Rates by Week among Cases < 65 years of age

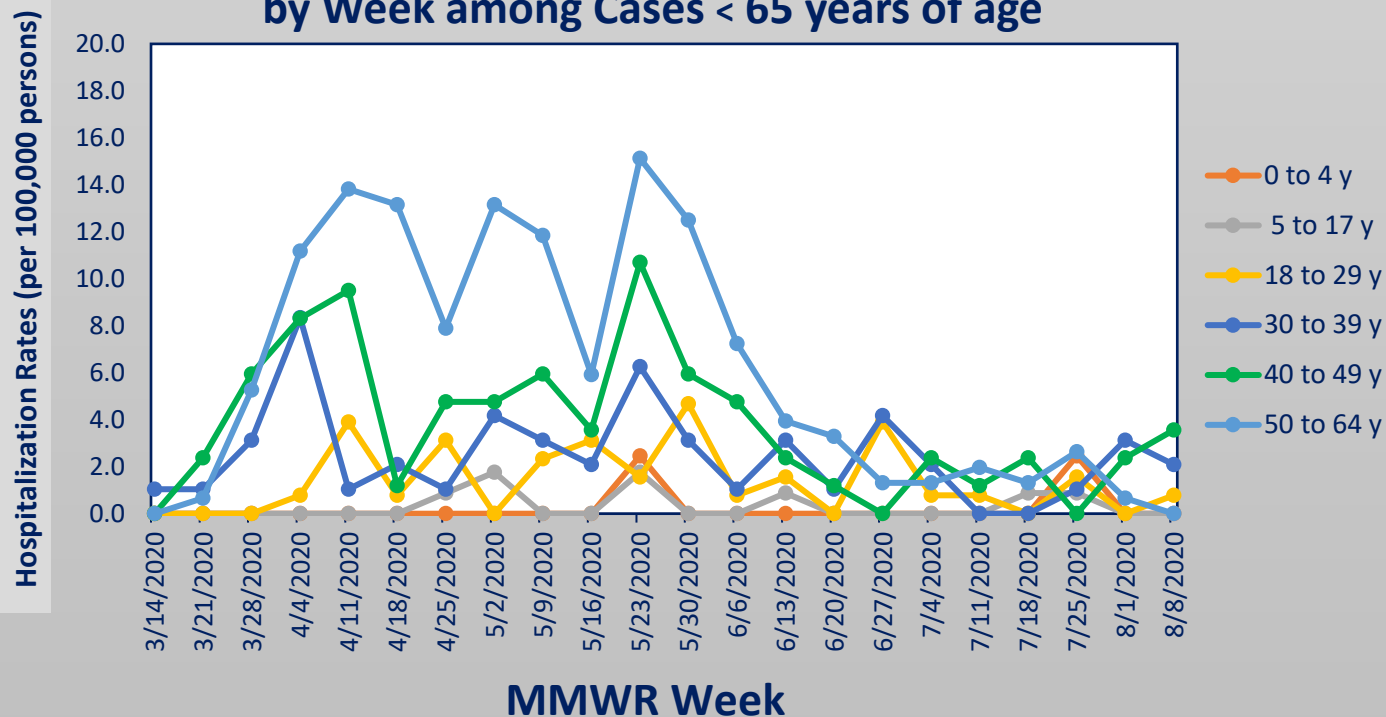


COVID-19 Preliminary Case Rates by Week among Cases ≥ 65 years of age

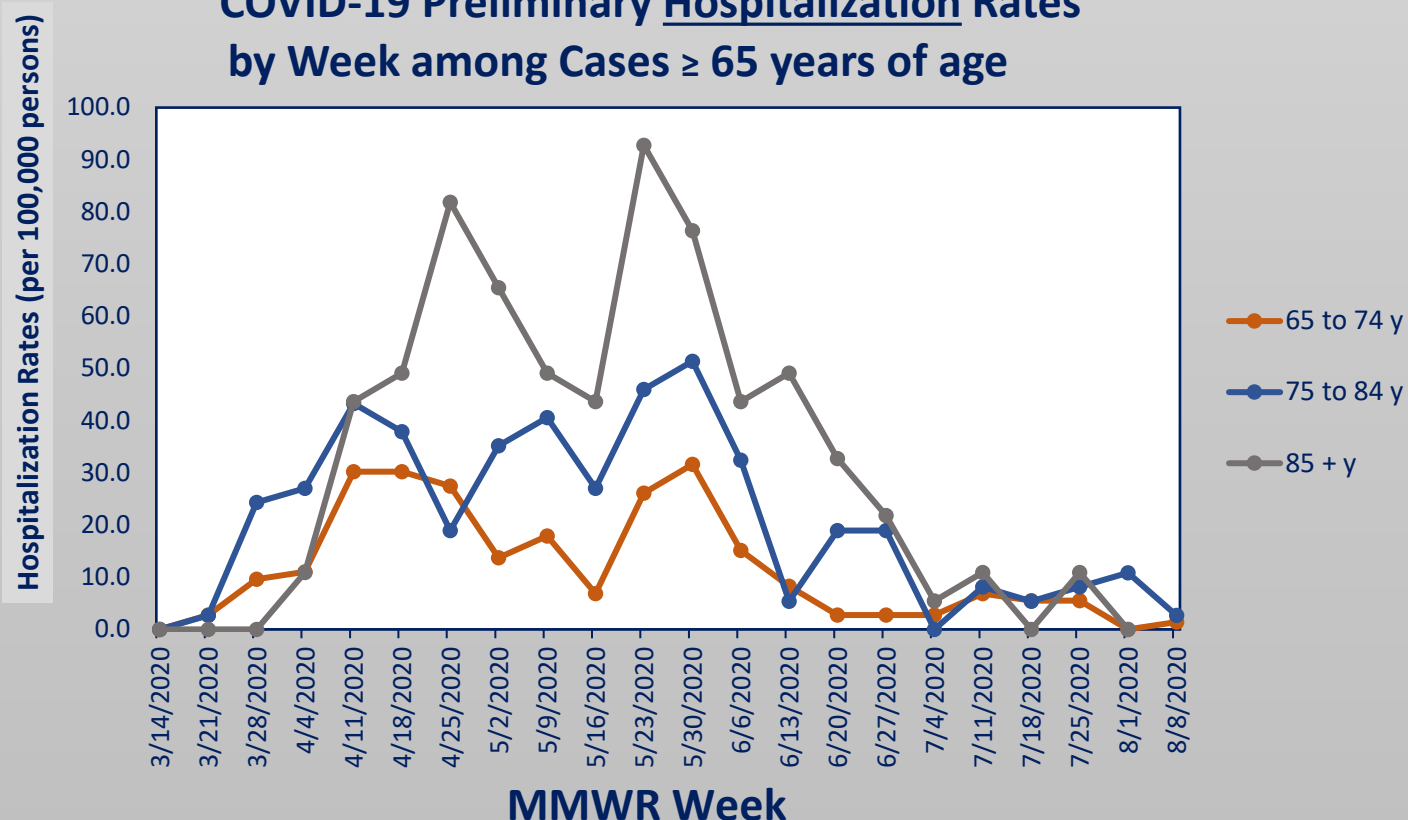


Monroe County COVID-19 Surveillance – Preliminary data as of August 12, 2020
Rochester Emerging Infections Program
Center for Community Health & Prevention, University of Rochester Medical Center

COVID-19 Preliminary Hospitalization Rates by Week among Cases < 65 years of age

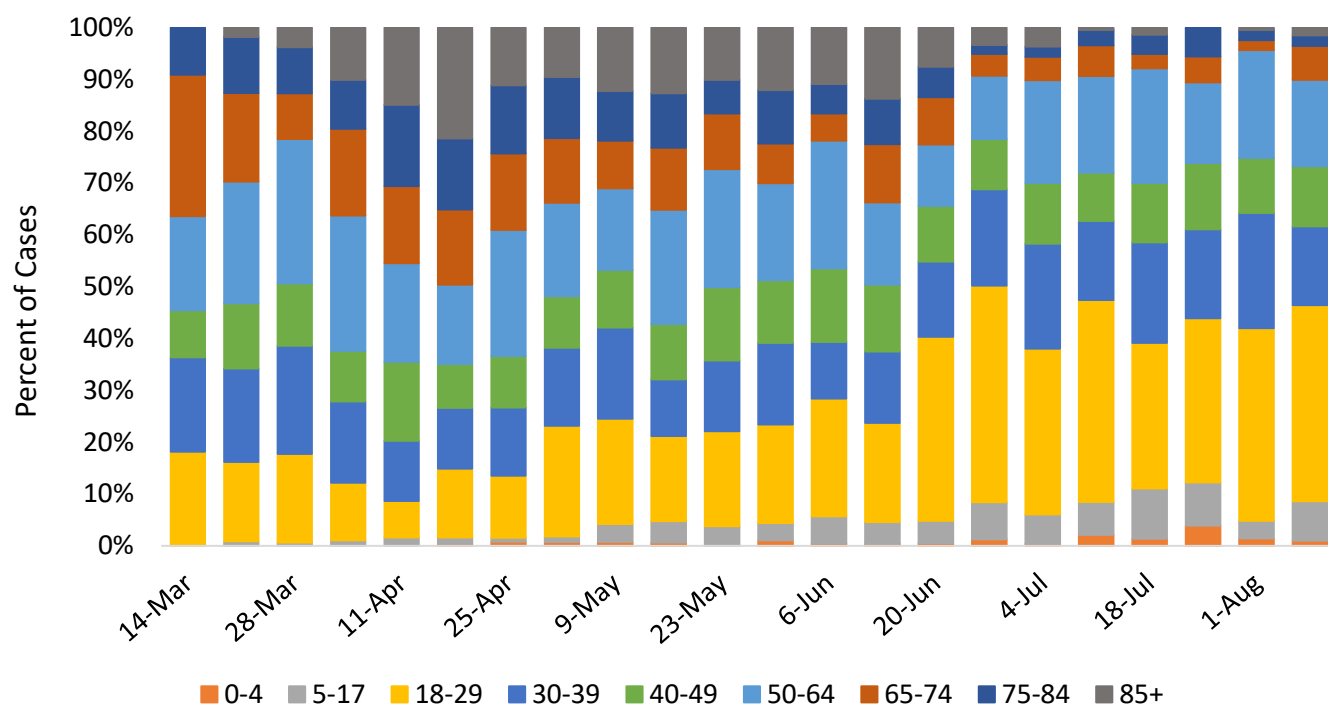


COVID-19 Preliminary Hospitalization Rates by Week among Cases ≥ 65 years of age

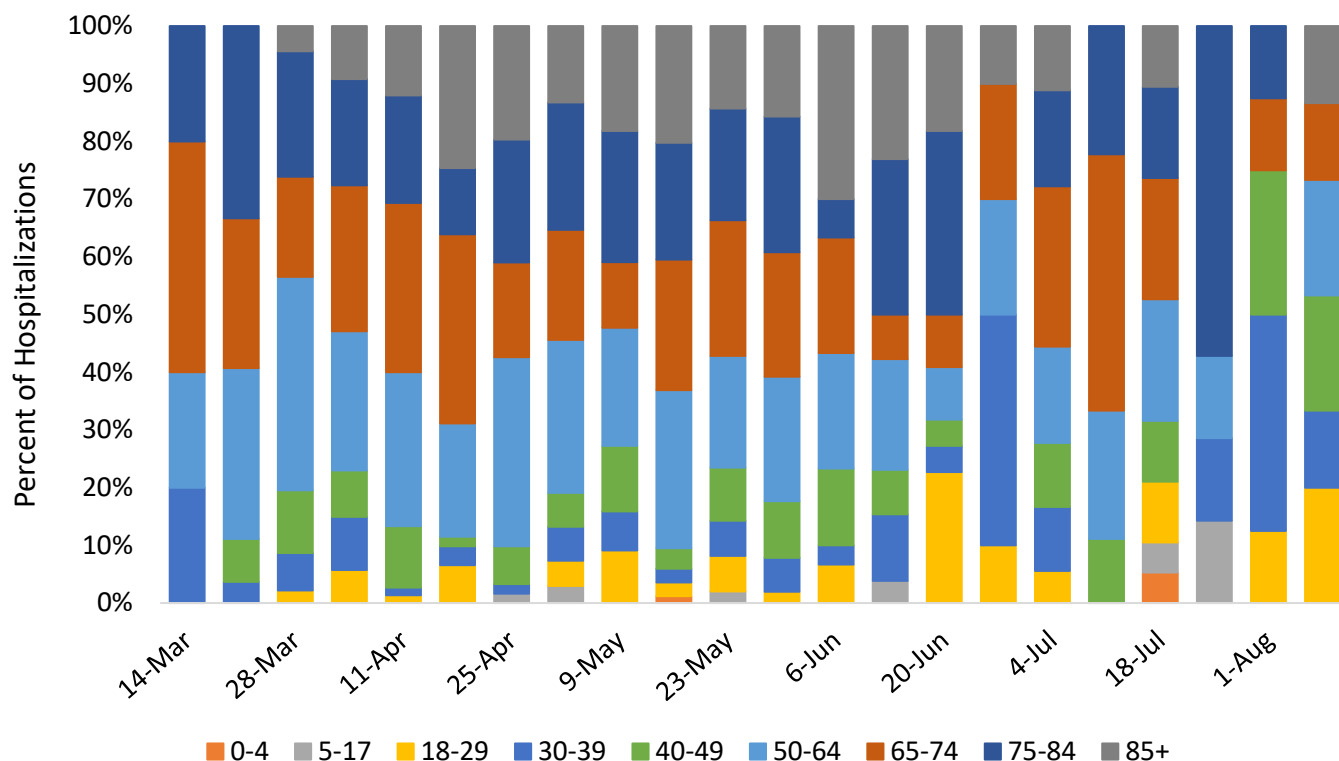


Monroe County COVID-19 Surveillance – Preliminary data as of August 12, 2020
Rochester Emerging Infections Program
Center for Community Health & Prevention, University of Rochester Medical Center

Percent of Total Cases for each Age Group by Week



Percent of Total Hospitalizations for each Age Group by Week



Monroe County COVID-19 Surveillance – Preliminary data as of August 12, 2020

Rochester Emerging Infections Program

Center for Community Health & Prevention, University of Rochester Medical Center

Monroe County Data as of August 12th, 2020

Age-Adjusted Rates by Race, Ethnicity, and Sex

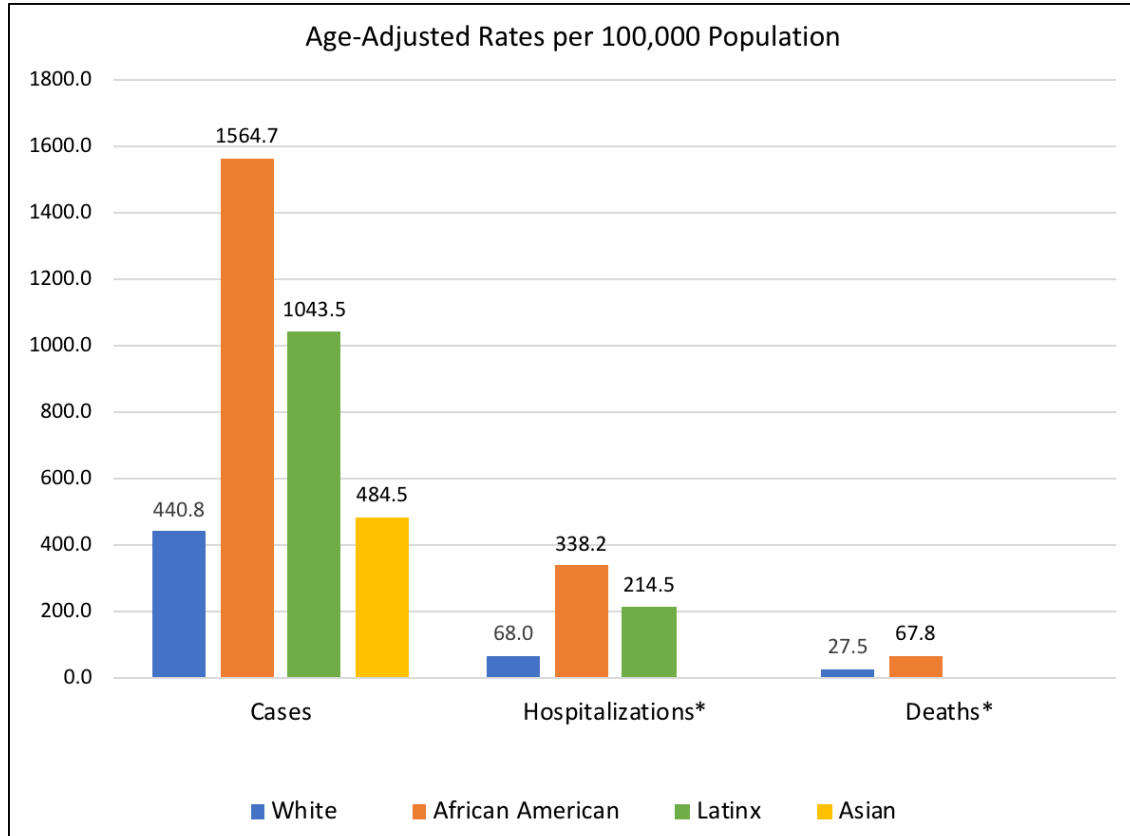
Race / Ethnicity	Cases		Hospitalizations			ICU		Deaths			In-Hospital Deaths	
	Total to Date	Age-Adjusted Rate per 100,000 Population	Total to Date	Percent of Total Cases	Age-Adjusted Rate per 100,000 Population	Total to Date	Percent of Hospitalized Cases	Total to Date	Percent of Total Cases	Age-Adjusted Rate per 100,000 Population	Total to Date	Percent of Hospitalized Cases
White	2561	440.8	449	17.5%	68.0	115	25.6%	203	7.9%	27.5	93	20.7%
African American	1638	1564.7	296	18.1%	338.2	99	33.4%	45	2.7%	67.8	29	9.8%
Latinx	567	1043.5	87	15.3%	214.5	24	27.6%	17	3.0%	64.8	13	14.9%
Asian	122	484.5	15	12.3%	74.6	5	33.3%	5	4.1%	34.7	2	13.3%
Other	137	*	27	19.7%	*	4	14.8%	3	2.2%	*	2	7.4%
Unknown	231	*	6	2.6%	*	1	16.7%	5	2.2%	*	3	50.0%
Total	5256	687.3	880	16.7%	126.7	248	28.2%	278	5.3%	37.8	142	16.1%

Sex	Cases		Hospitalizations			ICU		Deaths			In-Hospital Deaths	
	Total to Date	Age-Adjusted Rate per 100,000 Population	Total to Date	Percent of Total Cases	Age-Adjusted Rate per 100,000 Population	Total to Date	Percent of Hospitalized Cases	Total to Date	Percent of Total Cases	Age-Adjusted Rate per 100,000 Population	Total to Date	Percent of Hospitalized Cases
Men	2072	580.0	423	20.4%	120.8	144	34.0%	126	6.1%	37.9	74	17.5%
Women	3183	791.6	457	14.4%	105.3	104	22.8%	152	4.8%	29.4	68	14.9%
Total	5255	705.9	880	16.7%	111.6	248	28.2%	278	5.3%	32.8	142	16.1%

These data include age-adjusted rates, which allow us to make fairer comparisons among groups with different age distributions.

For example, a group having a higher percentage of older adults may have higher death or hospitalization rates because older adults are more likely to die or to be hospitalized.

Rate estimates for small groups (those having fewer than 20 people) may be unstable and should be interpreted with caution.



*Rate estimates for groups having fewer than 20 people may be unstable; values for those groups are not shown in the chart above.