

Monroe County COVID-19 Surveillance – Preliminary data as of November 18, 2020
Rochester Emerging Infections Program
Center for Community Health & Prevention, University of Rochester Medical Center

This is a preliminary report of COVID-19 cases, hospitalizations and deaths. These rates are preliminary as of 11/18/20 and are calculated by number of **positive incident tests** (at least 14 days apart), **NOT by person**.

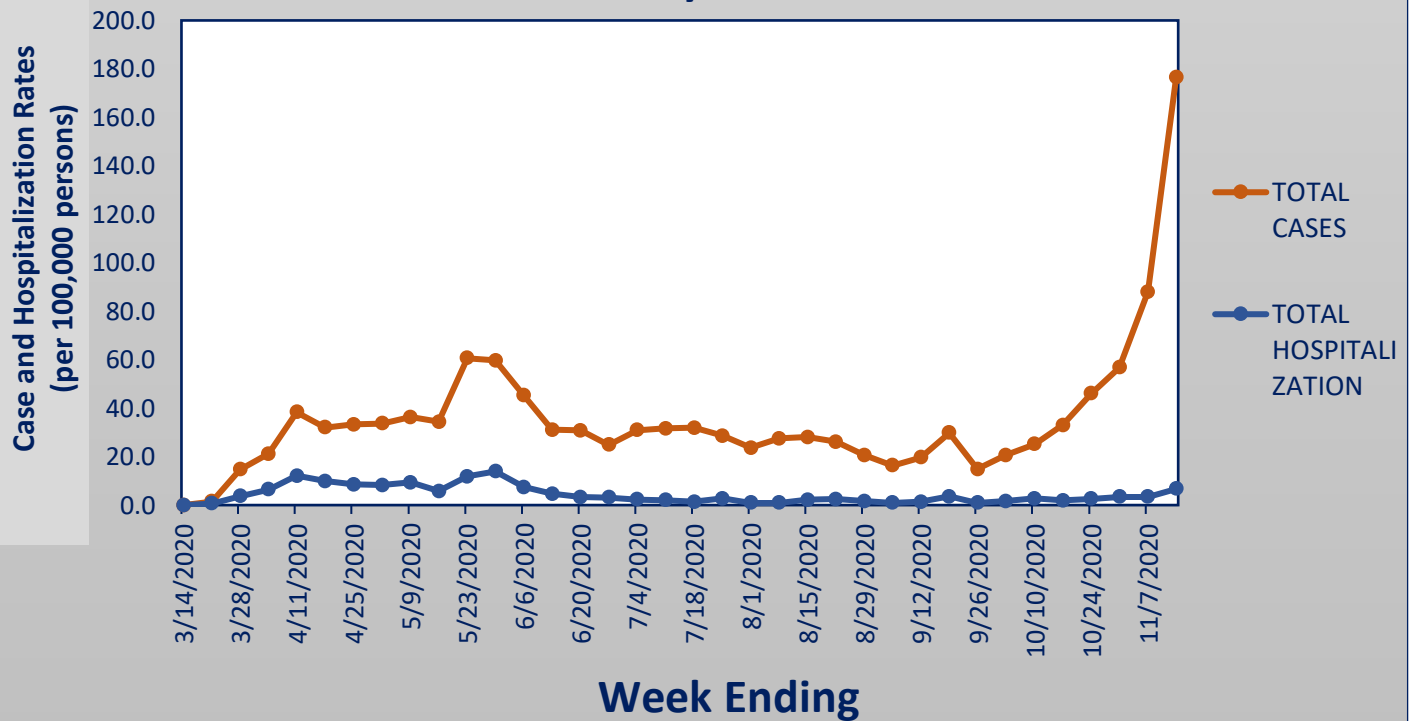
For additional information, including interactive dashboards and maps, visit these sites:

[Monroe County information](#), provided by the Monroe County Department of Public Health

[Monroe and other upstate counties](#), provided by the University of Rochester Center for Health + Technology

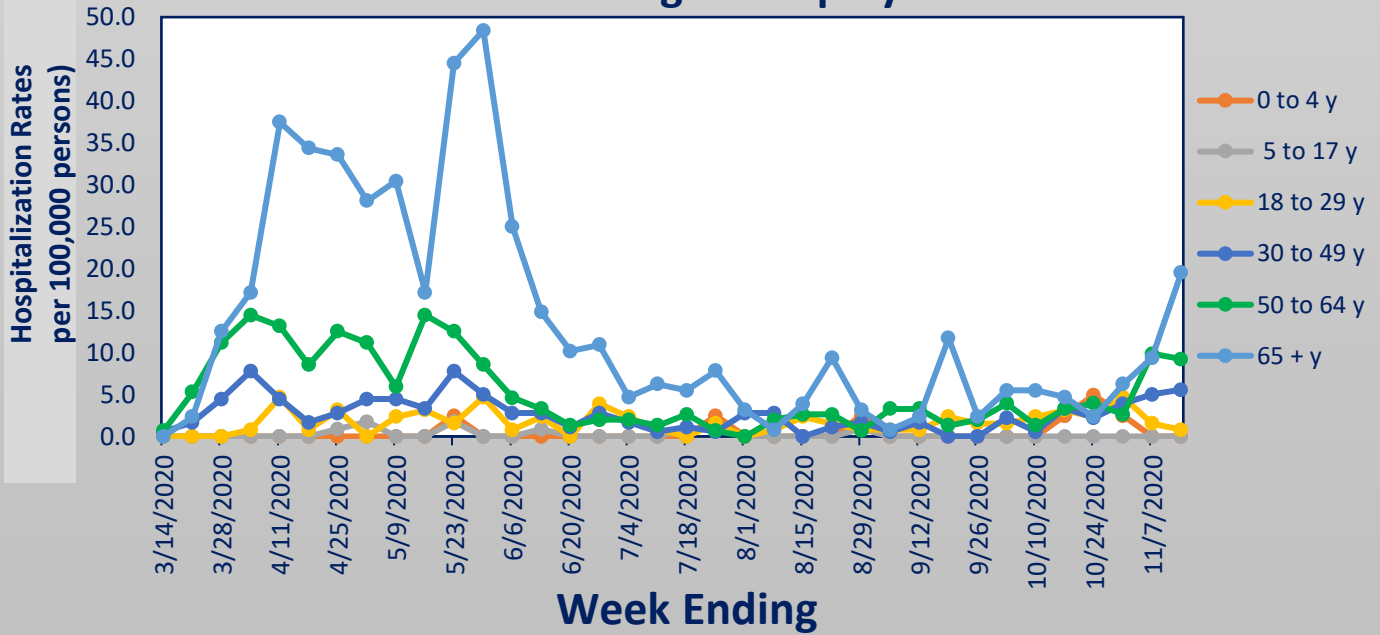
[National and Global data and maps](#), provided by Johns Hopkins

COVID-19 Preliminary Case and Hospitalization Rates by Week

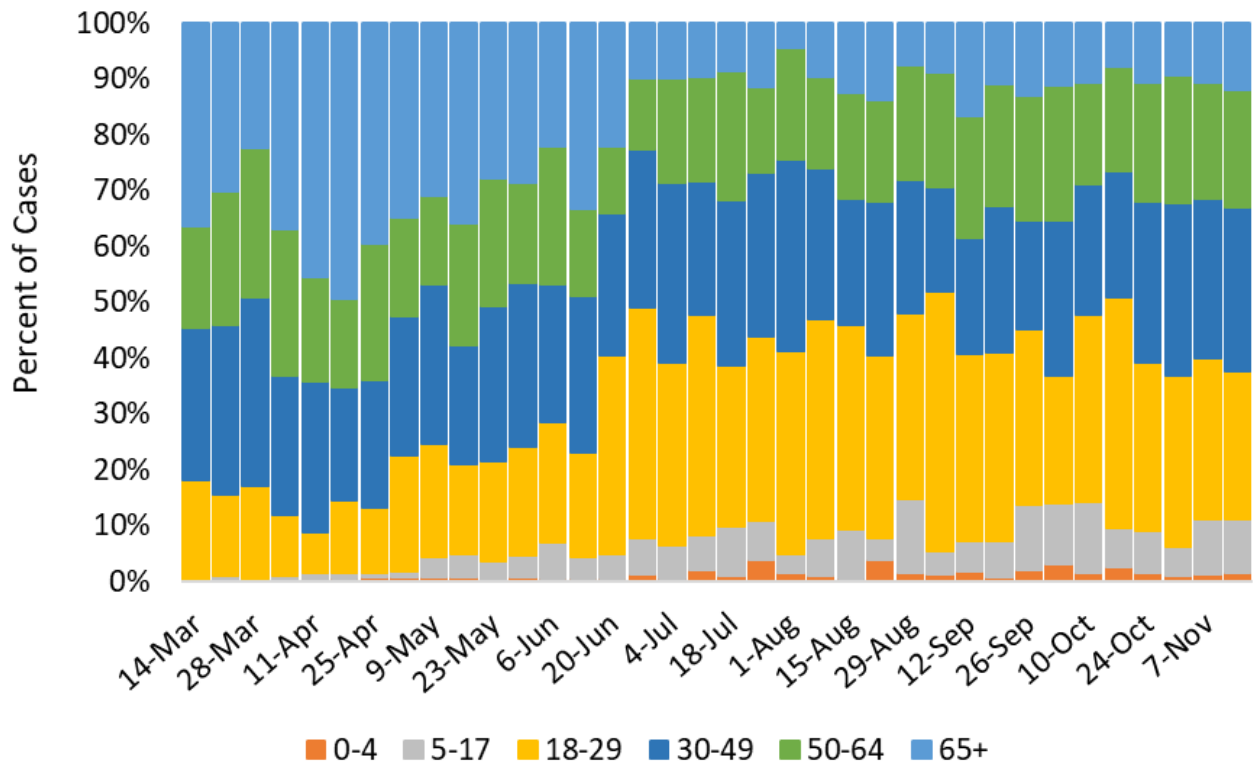


Monroe County COVID-19 Surveillance – Preliminary data as of November 18, 2020
Rochester Emerging Infections Program
Center for Community Health & Prevention, University of Rochester Medical Center

COVID-19 Preliminary Hospitalization Rates for each Age Group by Week



Percent of Total Cases for each Age Group by Week



Monroe County COVID-19 Surveillance – Preliminary data as of November 18, 2020
Rochester Emerging Infections Program
Center for Community Health & Prevention, University of Rochester Medical Center

Laboratory Confirmed COVID-19 Cases, Hospitalizations, ICU Admissions and Deaths

Age Group	Cases* (N)	Case Rates (per 100,000 persons)	Hospitalized (N)	Hospitalized (% of Total Cases)	ICU Admissions (N)	ICU Admissions (% of Hospitalized Cases)	Deaths (N)	Case Fatality Rate (%)
0 to 4 y	142	349.6	8	5.6	0	0.0	0	0.0
5 to 17 y	741	652.3	9	1.2	0	0.0	0	0.0
18 to 29 y	3022	2358.3	82	2.7	7	8.5	0	0.0
30 to 49 y	3075	1708.0	175	5.7	32	18.3	4	0.1
50 to 64 y	2310	1519.4	297	12.9	79	26.6	15	0.6
≥ 65 y	2062	1610.3	684	33.2	166	24.3	288	14.0
Total	11352	1528.9	1255	11.1	284	22.6	307	2.7

*cases may have more than 1 incident, positive test

Monroe County Data as of November 18, 2020 **Age-Adjusted Rates by Race, Ethnicity, and Sex**

Race / Ethnicity	Cases		Hospitalizations			ICU		Deaths			In-Hospital Deaths	
	Total to Date	Age-Adjusted Rate per 100,000 Population	Total to Date	Percent of Total Cases	Age-Adjusted Rate per 100,000 Population	Total to Date	Percent of Hospitalized Cases	Total to Date	Percent of Total Cases	Age-Adjusted Rate per 100,000 Population	Total to Date	Percent of Hospitalized Cases
White	6635	1215.2	658	9.9%	102.6	136	20.7%	223	3.4%	33.0	106	16.1%
African American	2461	2284.6	383	15.6%	424.8	108	28.2%	51	2.1%	68.3	34	8.9%
Latinx	1102	1907.3	130	11.8%	306.5	29	22.3%	20	1.8%	68.1	13	10.0%
Asian	381	1349.6	36	9.4%	147.0	6	16.7%	5	1.3%	30.9	1	2.8%
Other	298	*	37	12.4%	*	4	10.8%	3	1.0%	*	2	5.4%
Unknown	475	*	11	2.3%	*	1	9.1%	5	1.1%	*	3	27.3%
Total	11352	1484.0	1255	11.1%	177.4	284	22.6%	307	2.7%	42.0	159	12.7%

Sex	Cases		Hospitalizations			ICU		Deaths			In-Hospital Deaths	
	Total to Date	Age-Adjusted Rate per 100,000 Population	Total to Date	Percent of Total Cases	Age-Adjusted Rate per 100,000 Population	Total to Date	Percent of Hospitalized Cases	Total to Date	Percent of Total Cases	Age-Adjusted Rate per 100,000 Population	Total to Date	Percent of Hospitalized Cases
Men	4941	1367.6	618	12.5%	174.4	169	27.3%	134	2.7%	38.5	78	12.6%
Women	6392	1638.2	637	10.0%	151.3	115	18.1%	173	2.7%	38.5	81	12.7%
Total	11333	1507.6	1255	11.1%	162.4	284	22.6%	307	2.7%	38.5	159	12.7%

These data include age-adjusted rates, which allow us to make fairer comparisons among groups with different age distributions. For example, a group having a higher percentage of older adults may have higher death or hospitalization rates because older adults are more likely to die or to be hospitalized.