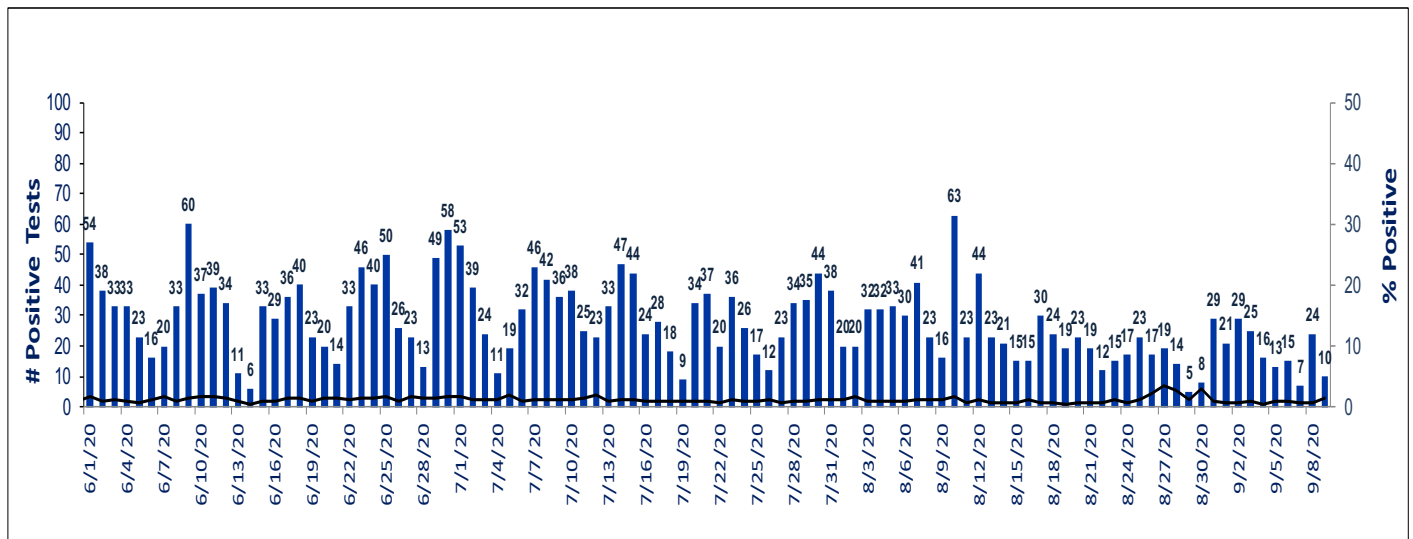


Monroe County COVID-19 Surveillance – Preliminary data as of September 9, 2020
Rochester Emerging Infections Program
Center for Community Health & Prevention, University of Rochester Medical Center

This is a preliminary report of COVID-19 cases, hospitalizations and deaths.
Cumulatively, there were 5,832 laboratory confirmed cases, 934 hospitalizations, and 251 ICU admissions.
284 deaths have been confirmed to date.

Preliminary daily count of new COVID-19 cases - Monroe County, June 1 - September 9, 2020



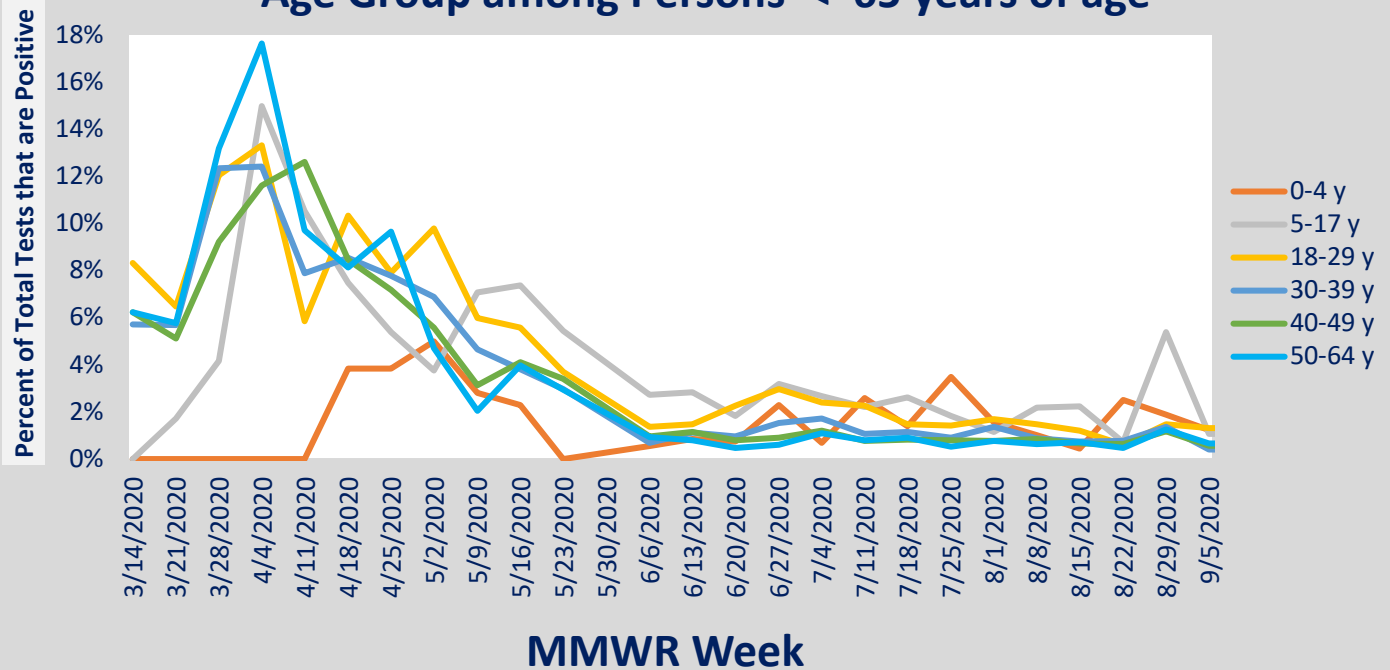
Data Source: Electronic Clinical Laboratory Reporting System, New York State. Bars represent the daily tests based on day of collection of the test and the black line indicates the percentage of all tests that were positive.

**Cumulative Data of Laboratory Confirmed COVID-19 Cases, Hospitalizations,
 ICU Admissions and Deaths in Monroe County**
Data as of September 9, 2020

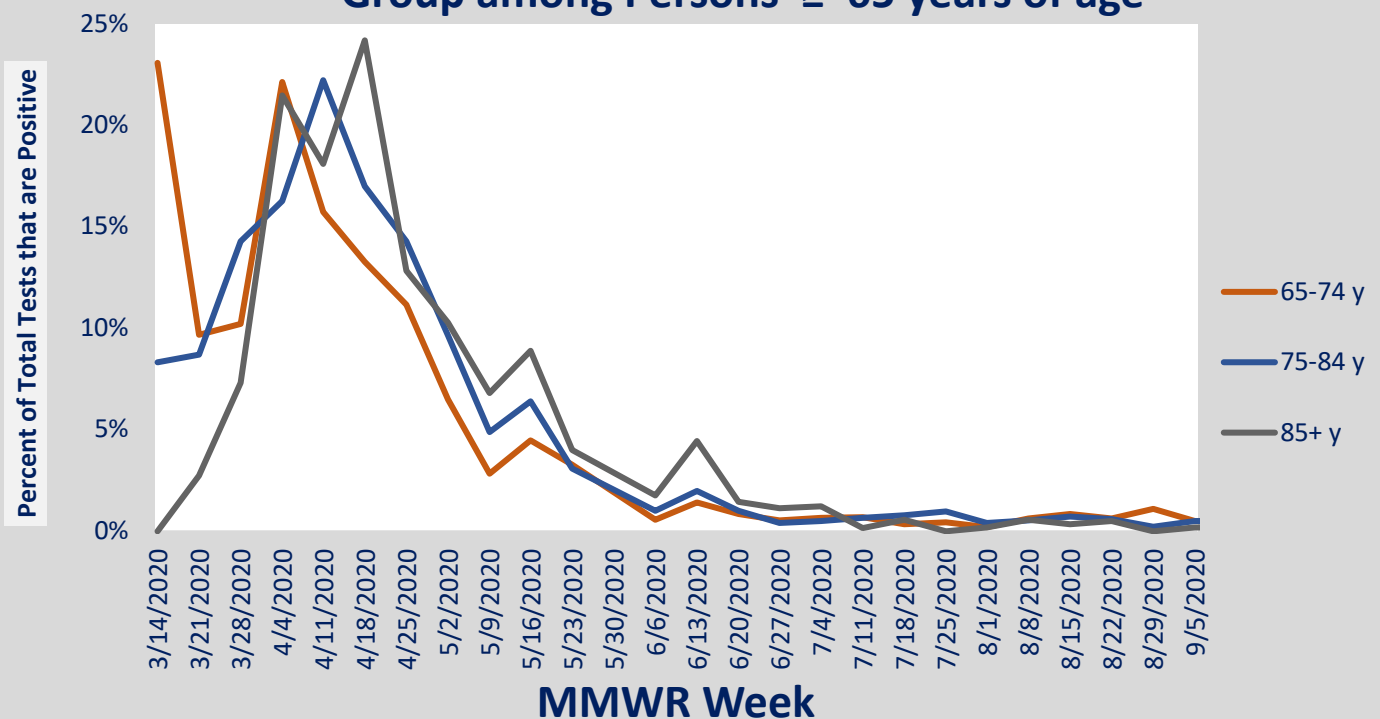
Age Group	Cases (N)	Case Rates (per 100,000 persons)	Hospitalized (N)	Hospitalized (% of Total Cases)	ICU Admissions (N)	ICU Admissions (% of Hospitalized Cases)	Deaths (N)	Case Fatality Rate (%)
0 to 4 y	52	128.0	3	5.8	0	0.0	0	0.0
5 to 17 y	247	217.4	9	3.6	0	0.0	0	0.0
18 to 29 y	1429	1115.2	48	3.4	5	10.4	0	0.0
30 to 39 y	873	910.4	55	6.3	14	25.5	2	0.2
40 to 49 y	661	785.6	72	10.9	15	20.8	1	0.2
50 to 64 y	1144	752.5	223	19.5	68	30.5	16	1.4
65 to 74 y	548	753.2	208	38.0	73	35.1	47	8.6
75 to 84 y	428	1157.7	178	41.6	58	32.6	81	18.9
≥ 85 y	450	2456.3	138	30.7	18	13.0	137	30.4
Total	5832	785.5	934	16.0	251	26.9	284	4.9

Monroe County COVID-19 Surveillance – Preliminary data as of September 9, 2020
 Rochester Emerging Infections Program
 Center for Community Health & Prevention, University of Rochester Medical Center

Percent of Total Tests that are Positive by Week and Age Group among Persons < 65 years of age

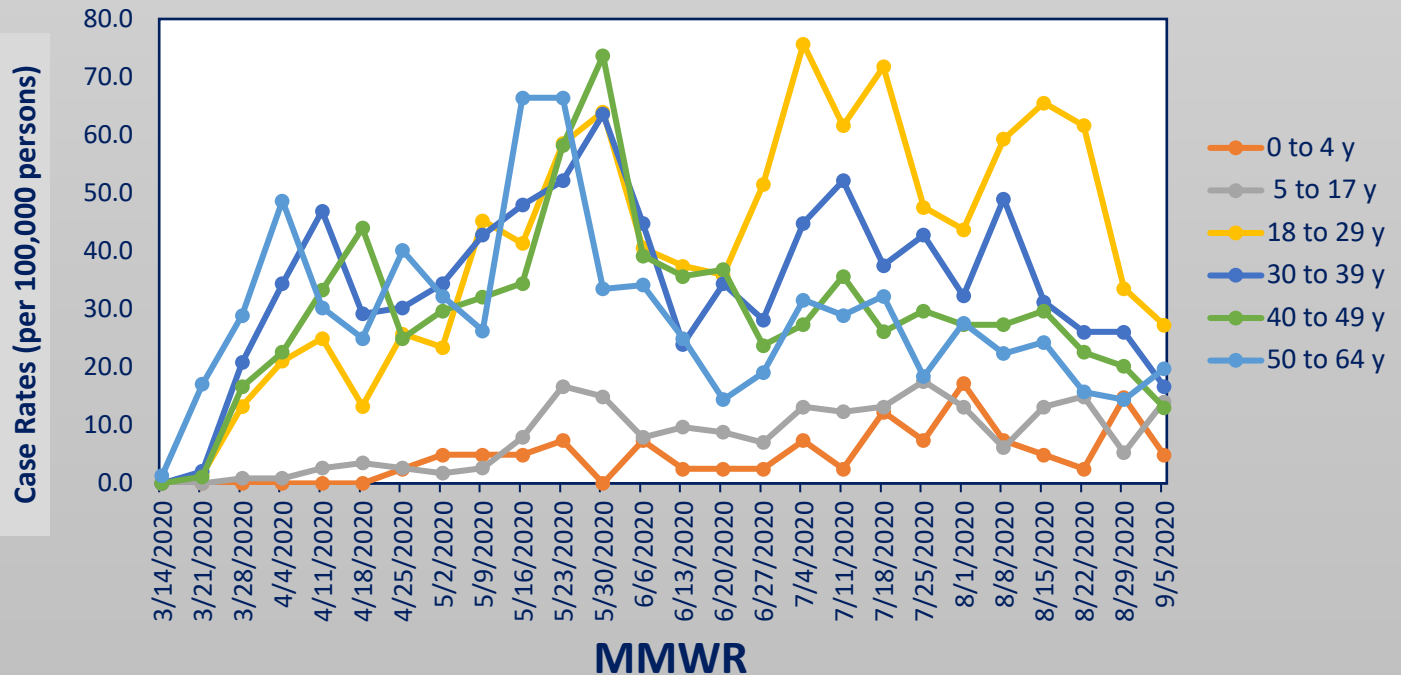


Percent of Total Tests that are Positive by Week and Age Group among Persons ≥ 65 years of age

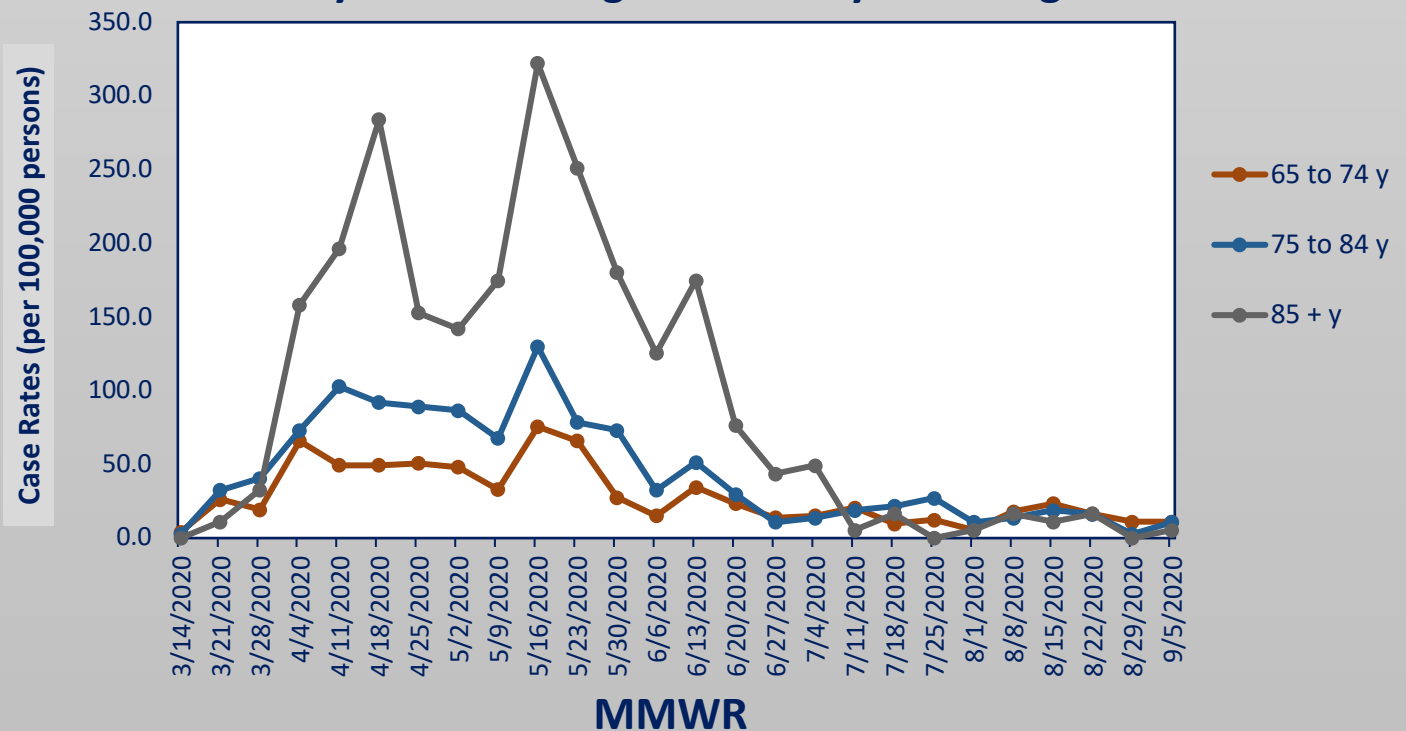


Monroe County COVID-19 Surveillance – Preliminary data as of September 9, 2020
 Rochester Emerging Infections Program
 Center for Community Health & Prevention, University of Rochester Medical Center

COVID-19 Preliminary Case Rates by Week among Cases < 65 years of age

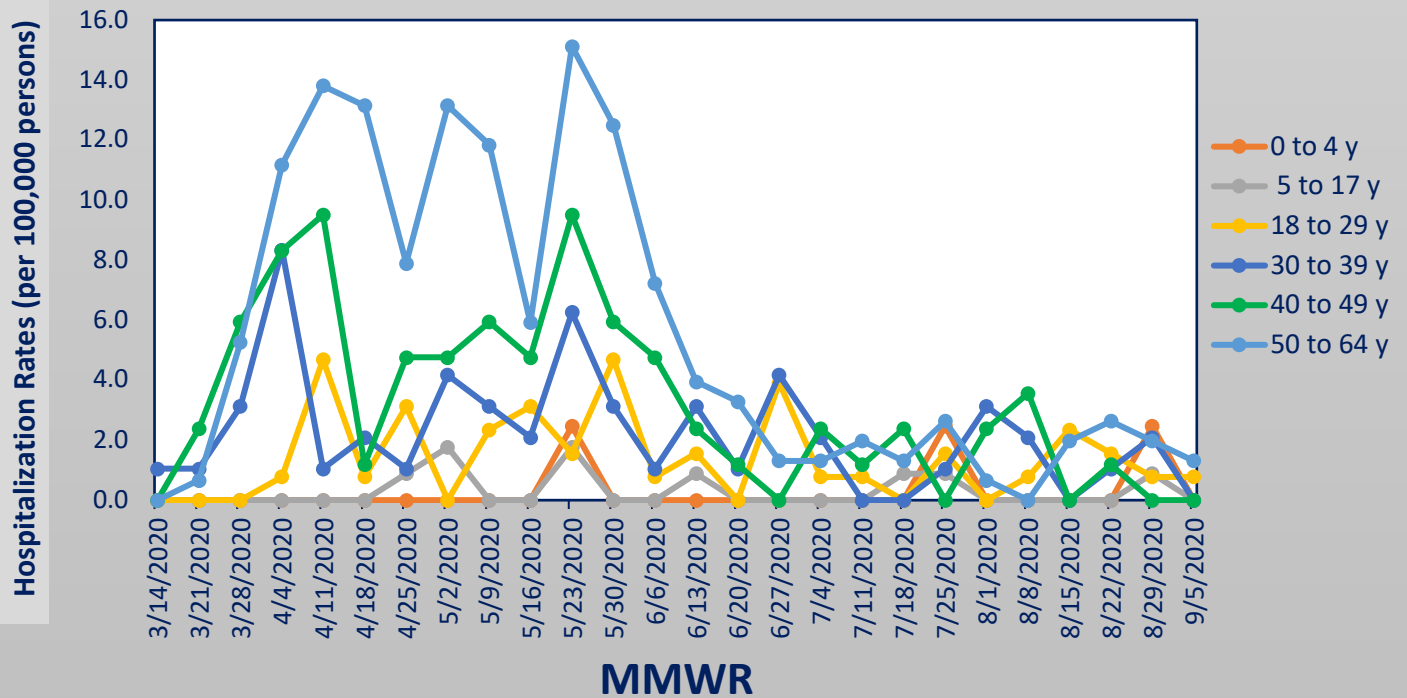


COVID-19 Preliminary Case Rates by Week among Cases ≥ 65 years of age

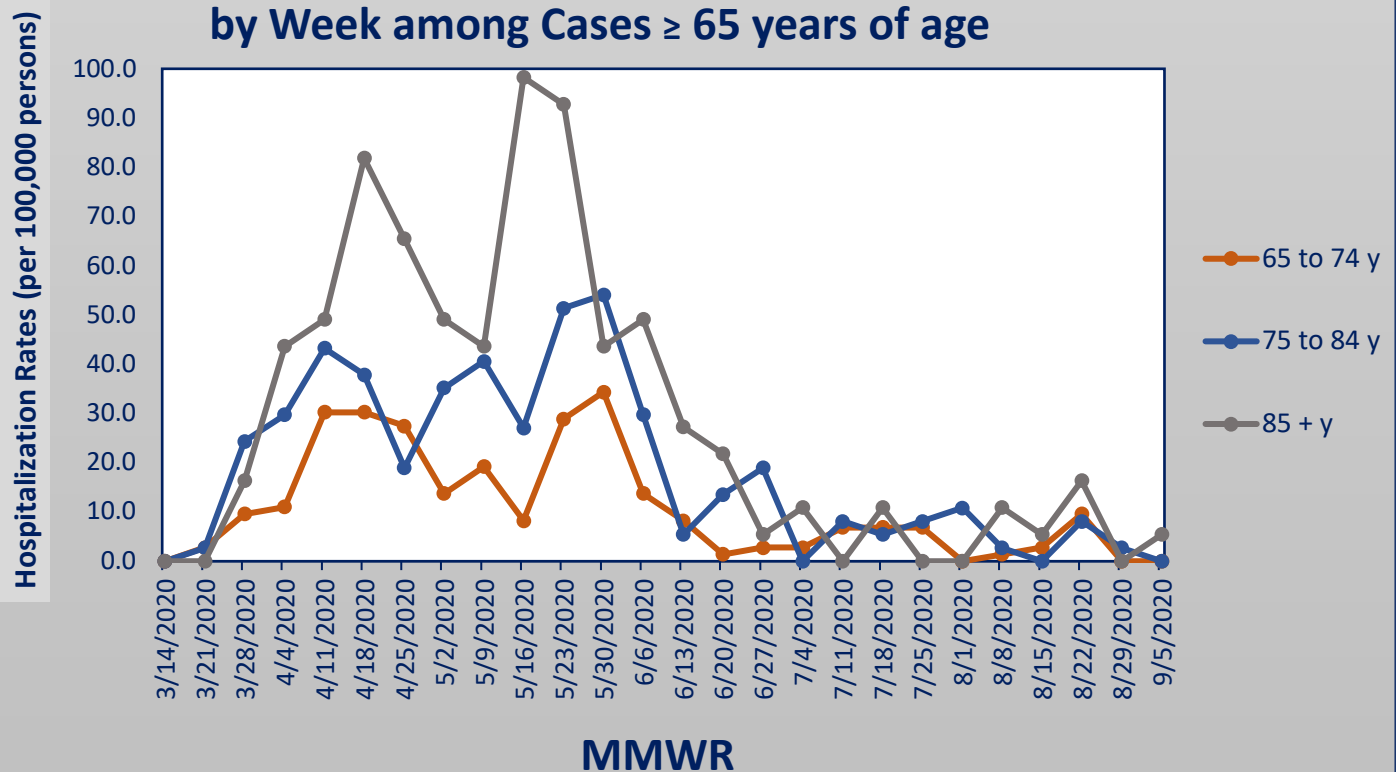


Monroe County COVID-19 Surveillance – Preliminary data as of September 9, 2020
 Rochester Emerging Infections Program
 Center for Community Health & Prevention, University of Rochester Medical Center

COVID-19 Preliminary Hospitalization Rates by Week among Cases < 65 years of age

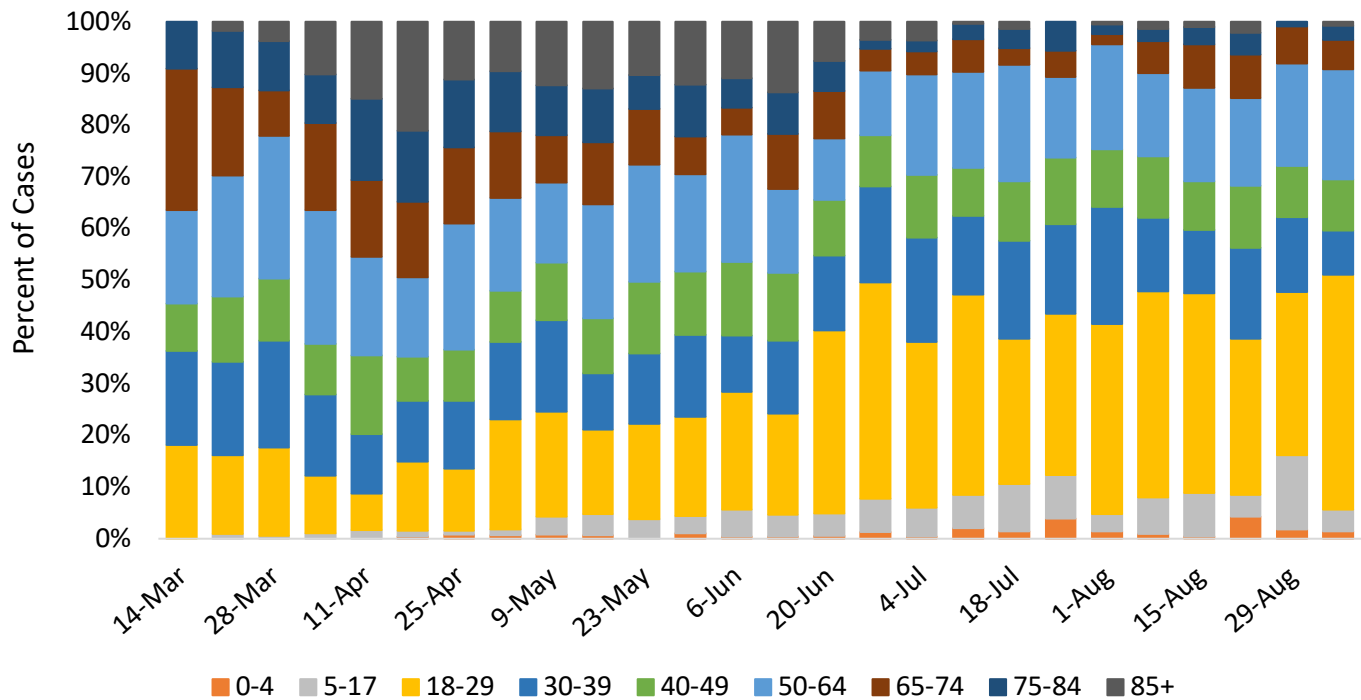


COVID-19 Preliminary Hospitalization Rates by Week among Cases ≥ 65 years of age

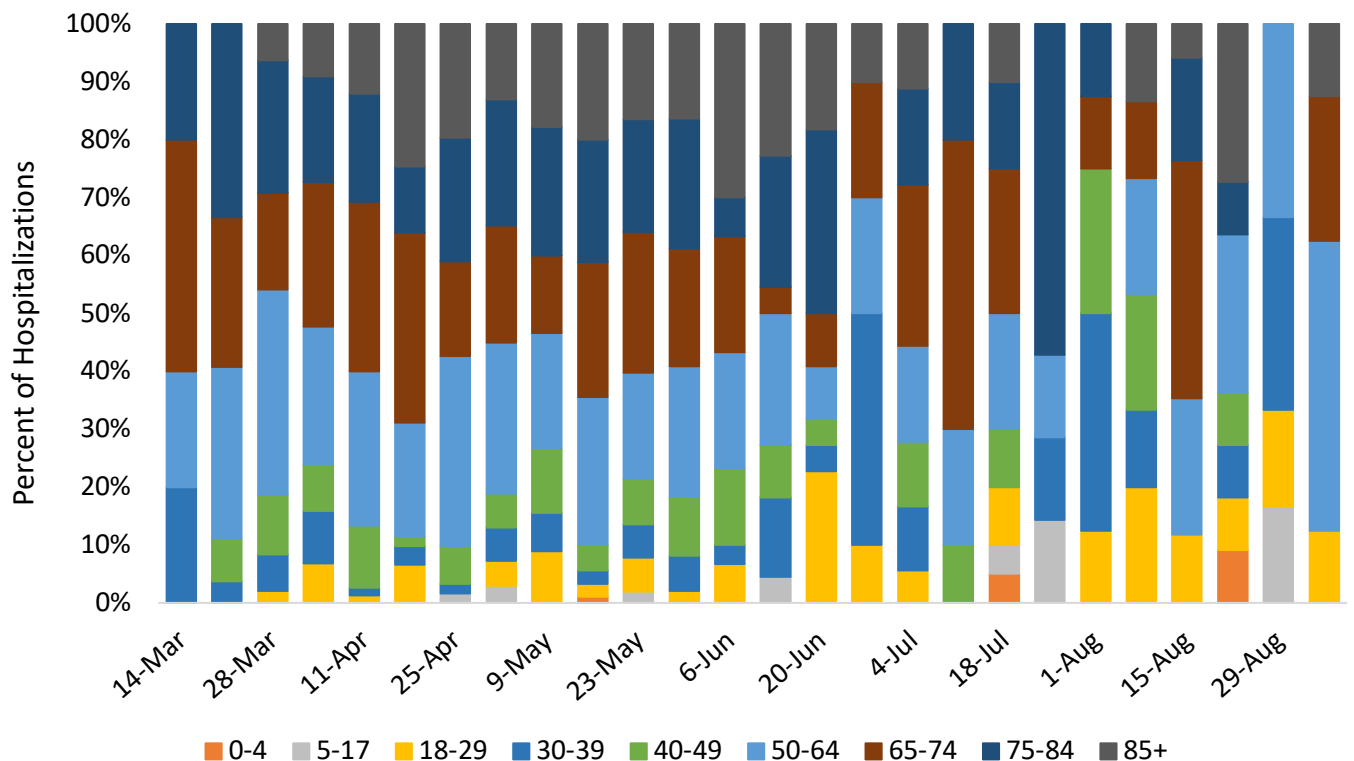


Monroe County COVID-19 Surveillance – Preliminary data as of September 9, 2020
Rochester Emerging Infections Program
Center for Community Health & Prevention, University of Rochester Medical Center

Percent of Total Cases for each Age Group by Week



Percent of Total Hospitalizations for each Age Group by Week



Monroe County COVID-19 Surveillance – Preliminary data as of September 9, 2020 Rochester Emerging Infections Program Center for Community Health & Prevention, University of Rochester Medical Center

Monroe County Data as of September 9, 2020

Age-Adjusted Rates by Race, Ethnicity, and Sex

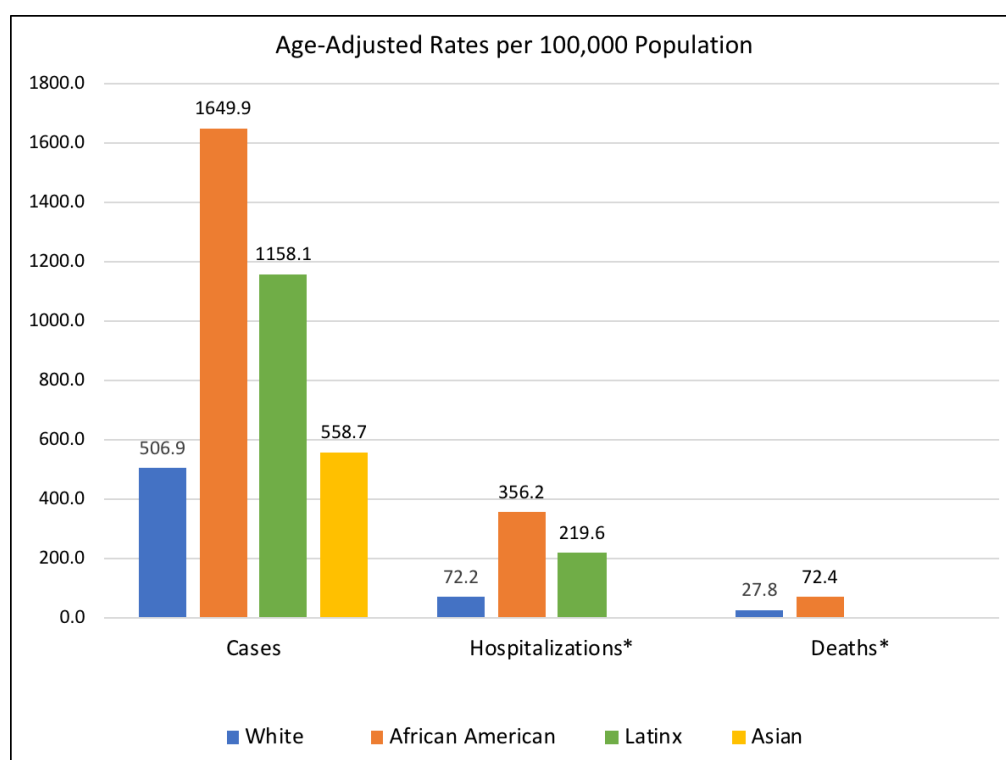
Race / Ethnicity	Cases		Hospitalizations			ICU		Deaths			In-Hospital Deaths	
	Total to Date	Age-Adjusted Rate per 100,000 Population	Total to Date	Percent of Total Cases	Age-Adjusted Rate per 100,000 Population	Total to Date	Percent of Hospitalized Cases	Total to Date	Percent of Total Cases	Age-Adjusted Rate per 100,000 Population	Total to Date	Percent of Hospitalized Cases
White	2912	506.9	478	16.4%	72.2	116	24.3%	205	7.0%	27.8	95	19.9%
African American	1736	1649.9	313	18.0%	356.2	102	32.6%	48	2.8%	72.4	32	10.2%
Latinx	642	1158.1	91	14.2%	219.6	23	25.3%	18	2.8%	69.7	13	14.3%
Asian	144	558.7	19	13.2%	90.5	5	26.3%	5	3.5%	34.7	3	15.8%
Other	156	*	27	17.3%	*	4	14.8%	3	1.9%	*	2	7.4%
Unknown	242	*	6	2.5%	*	1	16.7%	5	2.1%	*	3	50.0%
Total	5832	763.3	934	16.0%	133.6	251	26.9%	284	4.9%	39.1	148	15.8%

Sex	Cases		Hospitalizations			ICU		Deaths			In-Hospital Deaths	
	Total to Date	Age-Adjusted Rate per 100,000 Population	Total to Date	Percent of Total Cases	Age-Adjusted Rate per 100,000 Population	Total to Date	Percent of Hospitalized Cases	Total to Date	Percent of Total Cases	Age-Adjusted Rate per 100,000 Population	Total to Date	Percent of Hospitalized Cases
Men	2319	647.3	452	19.5%	129.0	146	32.3%	127	5.5%	38.2	75	16.6%
Women	3512	877.2	482	13.7%	111.1	105	21.8%	157	4.5%	30.3	73	15.1%
Total	5831	766.2	934	16.0%	119.8	251	26.9%	284	4.9%	34.1	148	15.8%

These data include age-adjusted rates, which allow us to make fairer comparisons among groups with different age distributions.

For example, a group having a higher percentage of older adults may have higher death or hospitalization rates because older adults are more likely to die or to be hospitalized.

Rate estimates for small groups (those having fewer than 20 people) may be unstable and should be interpreted with caution.



*Rate estimates for groups having fewer than 20 people may be unstable; values for those groups are not shown in the chart above.

Monroe County COVID-19 Surveillance – Preliminary data as of September 9, 2020
Rochester Emerging Infections Program
Center for Community Health & Prevention, University of Rochester Medical Center

