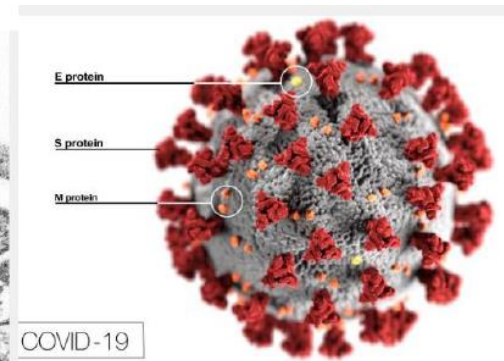
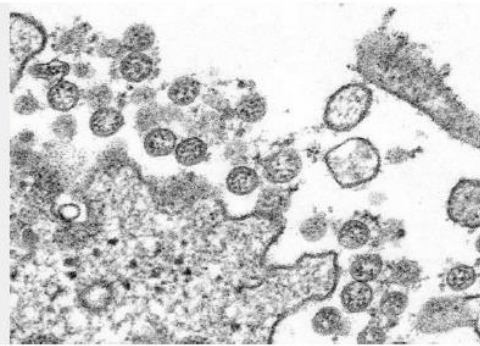
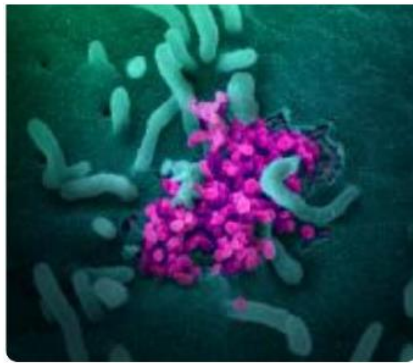


# Decontamination Procedures to Help Prevent COVID-19 Infections

School of Medicine and Dentistry (SMD)

April 24, 2020



**Dirk Bohmann, PhD**, Senior Associate Dean for Basic Research  
**Lynne Brown, RN, BSN, MBA**, Director of Infection Prevention  
**Chris Licata, CPE**, Director of Environmental Services for SMD  
**Sonia Rosenberger, DVM, MSOH**, Biosafety Officer, EH&S

Picture references: NIAID/RML <https://www.niaid.nih.gov/news-events/nih-study-validates-decontamination-methods-re-use-n95-respirators>  
Public Health Image Library image 23311, 23313



UNIVERSITY of ROCHESTER

# Agenda

- Status of the SMD research operation
- What to expect when people come back
  - Guidance on physical and temporal distancing
  - PPE and where to get it
- Pandemic Decontamination
  - High touch lab surfaces
  - If a lab mate is diagnosed with COVID-19
- Patient specimens - how to handle a spill
- Q&A



# Who we are and what we do

## ■ Infection Prevention (clinical/SMH)

- [https://sites.mc.rochester.edu/departments/infection-prevention/public-health-information/covid-19-2019-novel-coronavirus/covid-19\\_dailyfaq/](https://sites.mc.rochester.edu/departments/infection-prevention/public-health-information/covid-19-2019-novel-coronavirus/covid-19_dailyfaq/)
- <https://www.urmc.rochester.edu/grand-rounds/event-detail/32855177576221> (3/4/2020 Grand Rounds for COVID-19)



## ■ Environmental Services (EVS) previously called Housekeeping

<https://www.urmc.rochester.edu/news/story/3232/urmc-environmental-services-honored-by-arc-of-monroe-county.aspx>



## ■ Environmental Health & Safety (EH&S)

Fire Marshal, Emergency Planning, EPA/DEC (air, water, chemical waste), OSHA, general safety, construction safety, lab safety, biosafety/Institutional Biosafety Committee support, radiation safety <https://www.safety.rochester.edu/>



# What to expect when people come back

- What has worked so far?
  - Hand hygiene
  - Staying home when you feel sick
  - Physical and temporal distancing
- When you can't social distance
  - Know when to stay home - [Dr. ChatBot](#)
  - Universal masking
    - SMH will provide surgical masks
    - Pickup location TBD by department
    - Can wear until contaminated or damaged



# Pandemic Decon

## Overview

- Good overviews online, e.g. EnvirOx's Cleaning and Disinfecting During An Outbreak like COVID-19 (not a UR product)

<https://www.youtube.com/watch?v=7qfOyHuLk9I>

- For disinfectants to be effective, surfaces must be clean/free of organic matter and smooth/nonporous
- Environmental Services (EVS) for SMD routinely cleans and disinfects non-lab surfaces





# Pandemic Decon

## High Touch Lab Surfaces – Lab Guidance

Clean all “high-touch” surfaces every day

High touch surfaces include counters, tabletops, doorknobs, bathroom fixtures, toilets, phones, keyboards, tablets, and bedside tables. Also, clean any surfaces that may have blood, stool, or body fluids on them. Use a household cleaning spray or wipe, according to the label instructions. Labels contain instructions for safe and effective use of the cleaning product including precautions you should take when applying the product, such as wearing gloves and making sure you have good ventilation during use of the product.

SMH - [Isolation instructions for patients with respiratory symptoms](#)

- Determine for your lab and make a schedule
- Use NYS and EPA approved product - extensive list!

[www.dec.ny.gov/docs/materials\\_minerals\\_pdf/covid19.pdf](http://www.dec.ny.gov/docs/materials_minerals_pdf/covid19.pdf)

- Commonly used by UR labs: Cavicide, Clorox bleach, REScue, Vesphene IIse, Virex II 256 – use contact time wet per manufacturer instructions
- Environmental Services can help provide others and tips/tricks
  - Rapid-acting disinfectants that don't leave a residue - Diversey Oxivir TB (1 minute) or Spartan TB Cide (2 minute) – 273-4567 (work order, materials charged to your dept)
  - For tips/tricks/what to do and what not to do – e.g. can you spray light switches? Phone buttons? How do you decon paper/lab notebooks? SMD EVS office 275-5691



# Research Labs handling patient specimens/samples

- Must be approved by the Institutional Biosafety Committee
- Biosafety Officer will visit lab to verify inward directional airflow into lab, centrifuge safety cups, dedicated PPE, etc.
- COVID-19 specific door sign template
- UR IBC COVID-19 Patient Sample Quick Reference/One page to post in lab, use as training, or both
- MyPath COVID-19 training developed for patient care/SMH
- [BS017](#) - Emergency Procedures for Biological Spills in BSL1, BSL2 and BSL2+ Labs
  - Biohazard spill sign for the lab's spill kit has been made for you



# More to come...

- CURT is finalizing recommendations for re-opening labs
- Surgical masks coordinated by department
- EH&S will be providing a lab restart/reactivation checklist targeted to lab safety
- There will be an adjustment period, but we will adapt.
- UR is a strong community with tremendous minds. We can help in the public health fight against COVID-19.





# Q&A



**Dirk Bohmann, PhD**, Senior Associate Dean for Basic Research  
**Lynne Brown, RN, BSN, MBA**, Director of Infection Prevention  
**Chris Licata, CPE**, Director of Environmental Services for SMD  
**Sonia Rosenberger, DVM, MSOH**, Biosafety Officer, EH&S

