

UNYTE Newsletter



UNYTE
TRANSLATIONAL
RESEARCH NETWORK

Director's Corner

Gary Noronha, MD, *University of Rochester Medical Center*

Welcome to the first UNYTE Newsletter. We hope this newsletter, like the UNYTE Translational Research Network itself, provides a stimulus for productive research and educational collaborations between member institutions. We hope this newsletter, like our Scientific Sessions, provides an opportunity to showcase existing and future opportunities for inter-institutional activity in the full spectrum of translational work.

I recognize many of our readers may not know much about UNYTE itself. UNYTE is a consortium of the 18 New York State biomedical research institutions listed below. We believe that cross-institutional collaborations help our faculty, staff and trainees innovate, generate new discoveries, and compete for external funding. UNYTE builds on a longstanding tradition of preceding upstate New York research collaborations. Its immediate predecessor was the Upstate New York Translational Research Network (UNYTRN) which was launched in 2006. The UNYTRN consortium was renamed the UNYTE Translational Research Network – which places “NY” in the middle of the word “unite”, to indicate our statewide reach.

In this inaugural issue we highlight the exciting collaborative work being done by a multi-institutional team lead by Upstate Medical Center's Chris Morley. With participation from University at Buffalo and University of Rochester, it's been a highly productive collaboration. This multi-institutional partnership was a key factor in enabling this team to compete for this funding and conduct this project successfully. We think it's a great example of the great work that we can do when we “UNYTE.”

Member Institutions

Albany College of Pharmacy and Health Sciences &
Albany College of Pharmacy and Health Sciences – Pharmaceutical Research Institute (PRI)
Albany Medical College - Bassett Healthcare Network - Binghamton University, SUNY
Cornell University, Division of Nutritional Sciences - Guthrie Health System
Masonic Medical Research Laboratory - New York Chiropractic College
Rensselaer Polytechnic Institute - Rochester Institute of Technology - Roswell Park Cancer
Institute - Syracuse University - Trudeau Institute - University at Albany, SUNY
University at Buffalo, SUNY - University of Rochester - Upstate Medical University,
SUNY - Wadsworth Center, NYSDOH

UNYTE is a consortium of 18 biomedical research institutions from across New York State.

UNYTE fosters transdisciplinary and trans-institutional research collaborations and engages community and regional partners to demonstrate and disseminate methods and approaches to advance translational research.

this issue

Message from the Director P.1

UNYTE Collaboration Story P.2

Potential Funding P.2

UNYTE Scientific Session P.3

Contact Us



UNYTE@urmc.rochester.edu

This program is supported in part by the National Center for Advancing Translational Sciences of the National Institutes of Health under award UL1TR002001. The content is solely the responsibility of the authors and does not necessarily represent the official views of the National Institutes of Health.

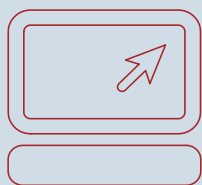
Potential Funding Opportunities for Collaborative Research

(Titles are clickable)

[Collaborative Research Projects to Enhance Applicability of Mammalian Models for Translational Research](#)

[RFA-AR-18-004--NIAMS Rheumatic Diseases Research Resource-based Centers \(P30\)](#)

[NEI Clinical Vision Research: Resource Center Grant \(UG1\)](#)



Is your institution collaborating with a UNYTE partner on research?

Tell us about it!
[Click Here](#)

3 UNYTE Institutions Collaborate to Increase Cancer Screening Rates in Primary Care

Colorectal cancer is the second leading cause of cancer deaths in both men and women in the United States. One in 8 women is expected to be diagnosed with breast cancer in her lifetime, and breast and cervical cancer are the most common causes of cancer deaths for women. In all three cases, early detection is key to increased survival rates. In Central and Western New York, three UNYTE institutions are working together to increase colorectal, cervical, and breast cancer screening rates in primary care.

Christopher Morley, PhD, Interim Chair of the Department of Public Health & Preventive Medicine, Vice Chair for Research in the Department of Family Medicine, and Associate Professor of Family Medicine, Public Health & Psychiatry at the State University of New York (SUNY) at Upstate Medical University, is the Principle Investigator of the *Increasing Cancer Screening through Academic Detailing and Practice Facilitation* (ADPF) project. Working with practice-based research networks (PBRNs) at Upstate (SALT-Net), SUNY University at Buffalo (UNYNET) and the University of Rochester Medical Center (Greater Rochester PBRN), Dr. Morley has obtained four rounds of funding from Health Research, Inc. and the New York State Department of Health (NYSDOH) to conduct an ongoing project that aims to increase cancer screening rates in “safety net” primary care practices that serve a relatively large portion of poor, underserved, uninsured

or publically insured patients, through academic detailing and practice facilitation. Support for the project ultimately comes from Centers for Disease Control & Prevention grants to NYS to run cancer screening and prevention programs. The project began as a one-year effort to improve colorectal cancer screening rates, but has expanded to include foci on breast and cervical cancer screening.

Academic detailing is an activity wherein a trained professional (academic detailer) visits health care professionals in their own setting to provide tailored education on specific health topics and to provide guidance on best practices. *Practice facilitation* involves the work of trained health care professionals (practice facilitators) to assist primary care practices in research and quality improvement activities, including data collection, feedback on provider and practice performance, and the facilitation of system-level changes to improve practice processes. Combined, academic detailing and practice facilitation help primary care practices align their work with evidence-based, best practices to improve patient care and outcomes.

Over the four-year period of funding, the ADPF project has worked with 28 distinct safety-net primary care practices, with between 12-23 practices participating in any given year. By engaging and working with these practices, the partnership has formed individualized, evidence-based solutions to help in-

crease screening rates for breast, cervical and colorectal cancer at many of sites, and strengthened a culture of quality improvement around cancer screening at others. For example, Woodward Health Center of Jordan Health (Rochester, NY) was able to increase colorectal cancer screening rates from 24.2% in 2014 to 39.2% in 2016 after two years of participation in the project. They have disseminated best practices for practice change at regional conferences in the Rochester and Syracuse areas, and recently published on [their results](#).

The three regional PBRNs began discussing cooperation in 2008, first with HRSA funding received by Dr. Morley, and later with coordination by the UNYTE Translational Research Network. When the opportunity arose to reach out to safety-net clinics throughout the regions served by the three UNYTE member institutions, the group was well-poised to submit a competitive application.

Register now for the UNYTE Scientific Session

**Collaborate to Innovate:
Maternal & Child Health Translational Research
July 14, 2017
University of Rochester School of Nursing
255 Crittenden Blvd, Rochester, NY**

The purpose of the Scientific Session is to bring together researchers, clinical leaders, and data scientists from across UNYTE institutions to spark interdisciplinary collaborations in maternal and child health. Participants will have the opportunity to:

- Explore innovative methods and recent successes in maternal and child health research.
- Learn more about maternal and child health research across the translational research spectrum.
- Understand the relevance and synergies between research and clinical care
- Share their personal expertise as an active participant.
- Accelerate collaborations with researchers in other institutions

[Register Here](#)

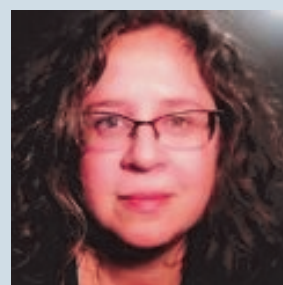
[Call for Posters](#)

Coming up Next: If you have faculty at your institution with **expertise in Nano-medicine or Precision Medicine** - they may want to present at the 15th *Annual Conference at Albany College of Pharmacy and Health Sciences* on September 25th. Contact Shaker Mousa for more information at shaker.mousa@ACPHS.EDU



[Gary Noronha, MD](#)

UNYTE Director, Assistant Professor of Clinical Medicine



[Karen Vitale, MEd](#)

Program Manager



[Eric Rubinstein, JD, MPH](#)

CTSI Executive Director for Research Services



[Shelby Johnson](#)

Administrative Assistant