

# UNYTE Newsletter

UNYTE is a consortium of 18 biomedical research institutions from across New York State. UNYTE fosters transdisciplinary and trans-institutional research collaborations and engages community and regional partners to demonstrate and disseminate methods and approaches to advance translational research.

## this issue

Message from the Director

P. 1

Special Announcement

P. 2

A Portfolio of Collaborations

P. 3

Funding Opportunities

P. 3

Executive Comm. Spotlight

P. 4

Contact Us



[UNYTE@urmc.rochester.edu](mailto:UNYTE@urmc.rochester.edu)

## Director's Corner Gary Noronha, MD



Welcome to issue #2 of the UNYTE Newsletter. In this issue we highlight some exciting collaborations between UNYTE member institutions to develop research partnerships and a future generation of researchers, and talk about one of our distinguished UNYTE Executive Committee members Jean Marie Burke of New York Chiropractic College. We also announce a new UNYTE funding opportunity designed to help build early stage collaborations between member institutions.

In September, the Albany College of Pharmacy hosted a conference called "The Road from Nanomedicine to Precision Medicine." The conference had over 100 attendees including approximately 15 from UNYTE member institutions, and 4 speakers/poster presenters from UNYTE institutions. The event brought together a diverse group including trainees, academic scientists, clinicians, industry scientists and legal experts with an interest in precision or nano medicine.

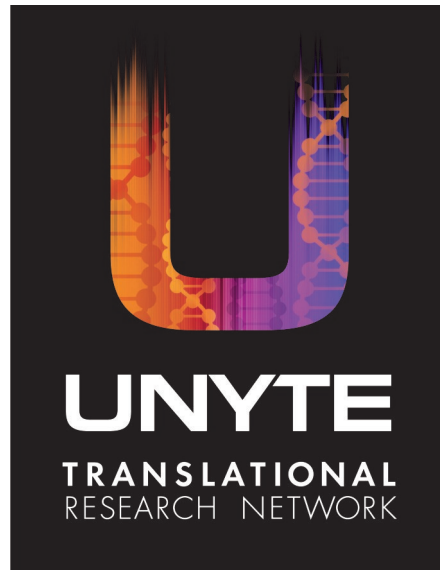
In July, University of Rochester hosted a UNYTE scientific session Collaborate to Innovate: Maternal & Child Health Translational Research. This conference also brought together from 5 UNYTE member institutions and 7 community agencies, including caregivers, researchers, trainees, students, and community partners. Student interest in this event was particularly strong, with 13 student poster submissions. The poster award winners are featured on page 4.

Finally two UNYTE institutions have been partnering to open opportunities training Deaf and Hard-of-Hearing (D/HH) biomedical scientists. Working together, the Rochester Institute of Technology's National Technical Institute for the Deaf, and the University of Rochester's National Center for Deaf Health Research are developing new venues to support the education of a new generation of scientists. The article inside talks about the innovative programs from these two institutions and opportunities being actively explored for further collaborations.

UNYTE's goal is to foster translational research and education partnerships between member institutions. We believe the work by Executive Committee members like Dr Burke, our new UNYTE Pipeline Pilot grant opportunity, scientific conferences and conjoint projects are all important stepping stones to further innovation and collaboration between upstate New York researchers and educators.

### Member Institutions

Albany College of Pharmacy and Health Sciences &  
Albany College of Pharmacy and Health Sciences – Pharmaceutical Research Institute (PRI)  
Albany Medical College - Bassett Healthcare Network - Binghamton University, SUNY  
Cornell University, Division of Nutritional Sciences - Guthrie Health System  
Masonic Medical Research Laboratory - New York Chiropractic College  
Rensselaer Polytechnic Institute - Rochester Institute of Technology - Roswell Park Cancer  
Institute - Syracuse University - Trudeau Institute - University at Albany, SUNY  
University at Buffalo, SUNY - University of Rochester - Upstate Medical University,  
SUNY - Wadsworth Center, NYSDOH



## SPECIAL ANNOUNCEMENT

### UNYTE Pipeline Pilot Funding Request for Applications

**University of Rochester Medical Center Clinical and Translational Science Institute (CTSI)  
Request for Applications – UNYTE Translational Research Network Pipeline Pilot Awards**  
For Projects Beginning January 1, 2018

The CTSI announces a UNYTE pipeline pilot grant opportunity of up to \$10,000. This award is intended to stimulate research partnerships between UNYTE member institutions to compete for future external translational biomedical research funding. Research teams must consist of one faculty member from the University of Rochester and at least one faculty member at another UNYTE member institution. The focus of the application should be on either a planning effort or a pilot research project leading to a CTSI pilot-funding application, or to independent external funding.

More information on the UNYTE Translational Research Network, including partner institutions, can be found on the [UNYTE website](#).

**Award Duration:** Six (6) to twelve (12) months

**Monetary Award Amount:** Up to \$10,000

**Number of Awards:** A minimum of two (2)

**Application Deadline:** December 1, 2017

**Award Notification:** December 31, 2017

**Earliest Start Date:** January 1, 2018

Awards starting on January 1, 2018 will be six-month awards.

**[View the full RFA here.](#)**

## Additional Potential Funding Opportunities for Collaborative Research

(Titles are clickable)

[UNYTE Pipeline Pilot Funding \(see p. 2\)](#)

[Consortium Linking Oncology with Thrombosis \(CLOT\) \(U01\)](#)

[James S. McDonnell Foundation Collaborative Activity Awards: Understanding Human Cognition](#)

[American Brain Tumor Association Research Collaboration Grants](#)

[Feasibility Studies to Build Collaborative Partnerships in Cancer Research \(P20\)](#)

[Small Research Grants for Establishing Basic Science-Clinical Collaborations to Understand Structural Birth Defects](#)

## RIT and URM C Collaborate on Deaf and Hard-of-Hearing Health Care Research and Training

A portfolio of collaborations between the Rochester Institute of Technology's National Technical Institute for the Deaf (RIT/NTID), and the University of Rochester's National Center for Deaf Health Research (UR/NCDHR) provides an innovative model for training deaf and hard-of-hearing (D/HH) biomedical scientists.

Currently, D/HH persons are underrepresented in occupations related to healthcare and life sciences, and less likely to have attained a Masters degree (3% vs 7% of hearing persons) or a doctoral degree (1% vs 3% of hearing persons). The RIT/UR collaborations seek to diversify the biomedical scientific workforce, by providing training opportunities to young D/HH scientists at all stages in the pipeline – from undergraduates to postdoctoral fellows.

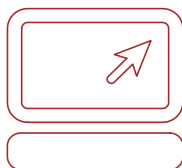
The [Rochester Bridges to the Doctorate Program](#) is the first of its kind that provides scientific mentoring for D/HH individuals to become a strong candidate for a doctoral degree program in biomedical or behavioral science disciplines. D/HH students are paired with faculty, students, and staff from NTID, RIT, and UR to gain skills necessary for graduate studies and career advancement.

The [Rochester Postdoc Partnership](#) program mentors postdoctoral research training in biomedical and behavioral sciences for Deaf and Hard-of-Hearing (D/HH) Scholars at the UR combined with an opportunity to develop critical academic skills, including teaching, through mentored teaching assignments at RIT and its Colleges of Health Sciences and Technology and NTID.

This summer, the National Institutes of Health's National Institute of General Medical Sciences awarded a grant to NTID to provide \$1.025 million in funding over five years to develop a scientists-in-training program for deaf and hard-of-hearing undergraduates. The [Research Initiative for Scientific Enhancement](#) (RISE) program is designed to increase the number of underrepresented students who enter Ph.D. programs in the biomedical and behavioral sciences. The RIT-RISE program is the first RISE program to specifically serve deaf and hard-of-hearing students.

This summer, the RIT/NTID and UR held the first Rochester Summer Research Training Institute (RSRTI) with Deaf/HH scientists and their mentors, June 11-13, 2017. The three-day conference drew one of the largest groups of Deaf and hard-of-hearing scientists in the nation.

Moving forward, RIT/NTID and UR/NCDHR propose the creation of a new, centralized program ("hub") that would develop and disseminate best practices for career development and training as well as state-of-the-art accommodations designed for inclusive communication for work with D/HH people. The hub would also train expert sign language interpreters with specialized biomedical knowledge. To create a community among otherwise isolated D/HH trainees, the program would facilitate electronic peer mentoring, professional networking, and access to D/HH role models, as well as communication-accessible courses, conferences, and other educational offerings. This hub would provide guidance and education for other biomedical research institutions, helping them to address challenges and better facilitate the success of D/HH trainees through the implementation of the hub's programs.



**Is your institution collaborating with a UNYTE partner on research? Tell us about it! [Click Here](#)**

## Spotlight on Executive Committee Member, Jeanmarie Burke, PhD and the NY Chiropractic College.

Jeanmarie Burke, PhD, is the Dean of Research and Associate Professor at New York Chiropractic College (NYCC). NYCC faculty have participated on two federally-funded Education Grants with the University of Rochester: the Rochester Area Collaborative Center of Excellence in Pain Education (RACCoEPE), and the Upstate New York Finger Lakes Geriatric Education Center. Research collaborations with the University of Rochester have led to both publications on biomechanics and imaging technologies and biomechanics, imaging technologies, and patient-reported and physical function outcomes. The collaborations have also generated research grant submissions.

NYCC is seeking biomedical collaborations to evaluate nonpharmacologic strategies, e.g. acupuncture therapy, chiropractic therapy, osteopathic manipulative treatment, massage therapy, physical therapy, relaxation therapy, and cognitive behavioral therapy for pain management that align with National Institutes of Health efforts to reduce the opioid epidemic. Faculty can also provide the expertise to conduct clinical and mechanistic studies on integrative health approaches for pain management, symptom management (e.g. anxiety, mood disturbances, fatigue, diarrhea, constipation, nausea, vomiting, menstrual cramps, etc), and promotion of healthy behaviors -- aligned with the strategic framework of the National Center for Complementary and Integrative Health (NCCIH).

## Poster Award Winners at the UNYTE Scientific Session on July 14, 2017



Dr Xiaozhong Wen, Assistant Professor in the Department of Pediatrics at University at Buffalo, State University of New York, receives the Faculty Award for his poster "*A multicomponent behavioral intervention for smoking cessation during pregnancy: a non-concurrent multiple baseline design.*" from UNYTE Director, Gary Noronha, MD.

Hayley Martin, PhD student in Epidemiology in Public Health Sciences at the University of Rochester receives the Student Award for her poster "*Is food insecurity a potential explanation for formula stretching and early introduction of complementary foods?*"



**Gary Noronha, MD**

UNYTE Director, Assistant  
Professor of Clinical Medicine



**Karen Vitale, MEd**

Program Manager



**Eric Rubinstein, JD, MPH**

CTSI Executive Director for  
Research Services



**Shelby Johnson**

Administrative Assistant