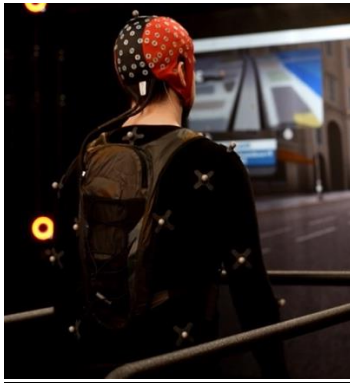


Neurophysiology of Multisensory Integration and Cognitive-Motor Interactions in Humans with Schizophrenia Spectrum Disorders Study Summary

- Study Abbreviation: MoBI SSDs
- Study Summary: Our study strives to better understand the underlying cognitive-motor processes in individuals with and without schizophrenia spectrum disorders (SSDs).
- Experimental Paradigm: We utilize Mobile Brain/Body Imaging (MoBI), which allows for simultaneous identification and characterization of (1) neural (EEG), (2) kinematic (jumpsuit with pre-determined markers placed along body), and (3) behavioral (experimental task) signals while subjects are either walking or sitting on a treadmill.
 - (Extra) Live video of MoBI: <https://tectales.com/ar-vr/vr-tech-allows-researchers-to-study-neurological-disorders.html>



- Inclusion Criteria:
 1. Participants are 18 years old or older.
 2. Normal or corrected-to-normal visual acuity.
 3. Sufficient motor function to be able to carry out the intended task (i.e., walk, even if it is at a slow and/or shuffled pace).
 4. Diagnosed with a SSD that is not Substance-Induced Psychotic Disorder.
 - a. Control participants must be neurologically normal and have no diagnosis of neurological disorders, including SSD.
- Exclusion Criteria:
 1. Insufficient motor function to be able to perform the chosen experimental task (i.e., unable to walk).
 2. Dependence on alcohol or illegal drugs.
 3. Under the influence of alcohol or illegal drugs.
 4. Diagnosed with human immunodeficiency virus (HIV).
 5. Current diagnosis of Post-Concussive Syndrome.
 6. Observation of disorientation or impaired movement beyond usual functioning by study staff.
- Contact Information:
 - (1) Call and/or text our lab at: 585-201-8388
 - May also call an additional lab phone at: 585-275-1674
 - (2) Email our lab at: cogneurolabrochester@gmail.com
 - (3) Email us directly:
 - Tori (study coordinator, Neuroscience graduate student): Victoria.Popov@URMC.Rochester.edu
 - Caitlin (study coordinator, Neuroscience graduate student): Caitlin.Sharp@URMC.Rochester.edu