

EASTMAN INSTITUTE for ORAL HEALTH
OUR FIRST
100
YEARS
Leading.
Caring. Discovering.



UR
MEDICINE

EASTMAN
INSTITUTE FOR ORAL HEALTH

EXCELLENCE WITHOUT EXCEPTION



The Eastman Institute for Oral Health (EIOH) at the University of Rochester is unique among academic health centers in the United States. Despite the absence of an undergraduate dental school, we have internationally recognized dental residency programs, vibrant oral biology research that is in the top tier of National Institute of Health (NIH) rankings, and robust clinical services in all dental specialties with a strong community orientation—proudly carrying on George Eastman’s legacy with a dedication to helping the underserved and people with special needs.

Our graduates develop the necessary leadership and clinical skills, technical knowledge, and expertise which allow them to provide the best oral health care across the world and/or be involved in academic careers. We recently established preceptorship and fellowship programs that allow local dentists—and dentists from all over the world—to be exposed to our programs. These new programs offer valuable time in the clinic, lab, and classroom to enhance knowledge of the various disciplines, but will not replace the comprehensive residency programs.

Our research also ranks in the top echelon for NIH dentistry funding, and continues to gain international attention for breakthrough discoveries. We work on a wide range of projects, including oral infectious diseases, salivary gland biology, craniofacial development, treatment for chronic orofacial pain, and community-based disease prevention. We focus on basic science research as well as translational, clinical, and community dentistry research.

Our patients travel to EIOH from all over the region to receive highly specialized treatment unavailable elsewhere. We help people with chronic pain, babies with cleft lip and palate, cancer patients, older adults who have lost their teeth and salivary function, and children and adults with developmental disabilities and other special needs.

EIOH owes its creation to philanthropist George Eastman who, nearly 100 years ago, donated the funds to build the Rochester Dental Dispensary. With a second philanthropic gift from John D. Rockefeller, Jr., the Dispensary began its international reach with the establishment of clinics in London, Rome, Brussels, Stockholm, and Paris. This paved the way for the future—a dedication to educating the highest quality dental teachers, clinicians, and researchers from around the world.

With our centennial approaching, it is time to build on our renowned past and set an ambitious goal for the future: to be the international leader in graduate dental education and oral health research, and a national model for complex dental care. Your support can help make this possible.

Sincerely,

Eli Eliav, DMD, MSc, PhD

*Director and Professor, Eastman Institute for Oral Health
Vice Dean for Oral Health, School of Medicine and Dentistry*

On the cover: Eastman Institute for Oral Health’s extremely rich history in orthodontics provides patients with specialized care to improve their dental and overall health. We offer world-class training through our faculty and alumni who have clinical expertise, diagnostic ability, and the technical knowledge to rectify complex, multifaceted craniofacial problems.

MAKING ORAL HEALTH EVER BETTER

At EIOH, we are focused on providing exceptional graduate dental training and first-rate oral biology research and dental care. With your support of our people and programs, you can help us provide innovative graduate oral health training, groundbreaking research, and state-of-the-art care to help people across the region and around the world.

NOVEL TREATMENTS & CARE

Since our founding, EIOH has been known for taking dental care to the people who need us most. More than 50 years ago, we unveiled New York's first mobile dental unit to help city and rural children gain access to much-needed care. Now we are launching a new mobile unit to accommodate people with special needs, including older adults, people with developmental disabilities and other medically complex conditions. A

crucial partnership with

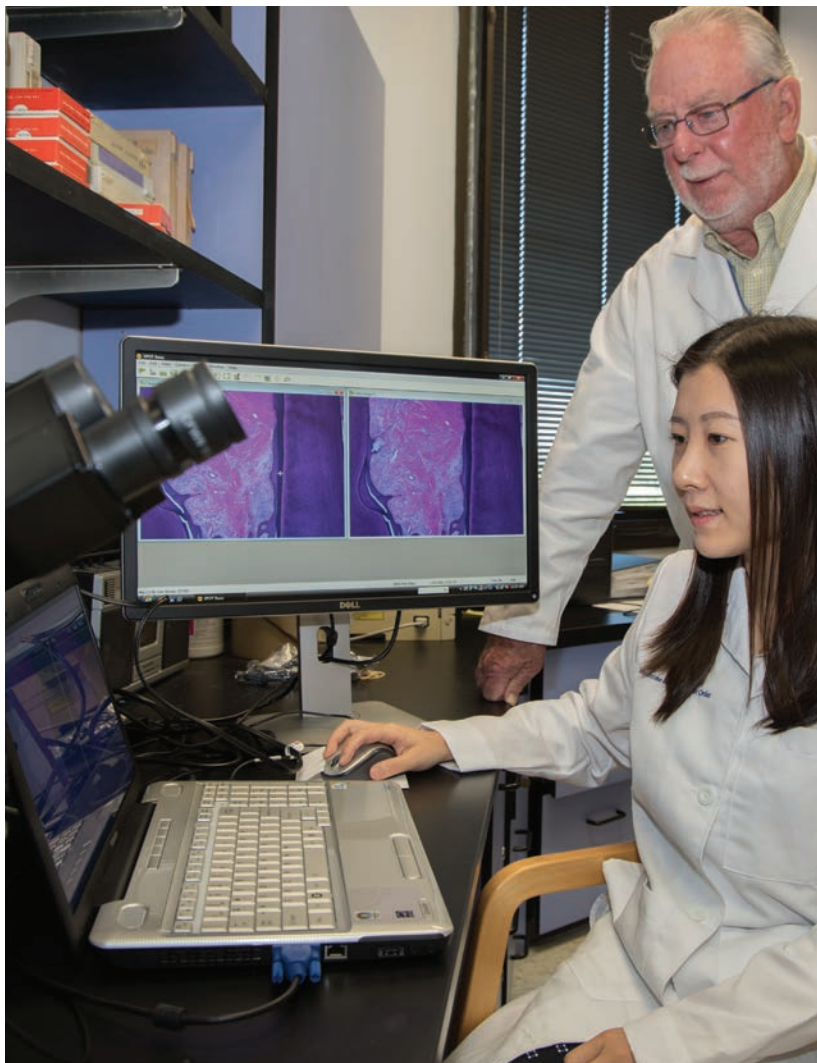
the B. Thomas Golisano Foundation is helping us determine how to improve access and availability of oral health care to help people with intellectual and developmental disabilities—their number one unmet health need. A recent federal grant will allow us—with Drs. Hans Malmstrom, Sean McLaren, and YanFang Ren at the helm—to train more than 100 pediatric and general dentists, plus numerous hygienists, dental assistants and other staff in treating the unmet oral health needs of adults with intellectual and developmental disabilities and other conditions. We are also at the forefront of using technology, like teledentistry, to provide care to people who cannot travel to us.



*Antonia Kolokythas, DDS, MS
Chair & Program Director
Oral and Maxillofacial Surgery*

ORAL SURGERY SPOTLIGHT

Patients who seek treatment at the Department of Oral and Maxillofacial Surgery (OMFS) suffer a myriad of dental, surgical, and medical concerns—from impacted wisdom teeth to head and neck cancers. Our mission is to provide a best-in-class collaborative training program that offers residents state-of-the-art surgical training with an unparalleled interdepartmental education in patient evaluation and management. Through our devotion to discovery, our residents constantly engage in meaningful, high-quality research, and enhanced scholarly activity for all residents and faculty through the establishment of key collaborations within the University and beyond.



EDUCATING LEADING EXPERTS

EIOH's highly competitive, world-renowned education programs help residents, post-doctoral students, and dentists who are training to be specialists develop the leadership, clinical and research skills, technical knowledge, and expertise that sets them apart from their peers. This prepares them to provide exceptional oral health care or academic leadership. Each year, hundreds of people around the globe apply for limited open spots in one of our specialty programs to work closely with talented, diverse, world-renowned faculty—and gain extensive exposure to clinical, translational, and basic science research.

GROUNDBREAKING RESEARCH

EIOH research ranges from fundamental science to translational and clinical applications to improve oral and overall health. Our scientists' expertise ranges from infectious diseases to cancer, environmental agents, and developmental biology to ultimately develop new treatments that impact the lives of patients and families worldwide. The Center for Oral Biology takes a highly interdisciplinary approach to research that promises to advance a wide variety of diseases by examining how embryos develop from a single cell to a complex organism, how genes control the development of organs, and how abnormal regulation of these genes results in human diseases. For example, our scientists discovered an explanation for the earliest stages of abnormal skull development in newborns, continue to study how to repair aggressive radiation treatment damage to the secretory glands, and continue to learn how microorganisms in the mouth cause not only cavities and oral infectious diseases, but systemic diseases including heart disease, stroke, preterm birth, and diabetes.





SAVE THE DATE!

EASTMAN INSTITUTE FOR ORAL HEALTH CENTENNIAL CELEBRATION JUNE 8-10, 2017

Please join us in Rochester as we celebrate the past, present, and future. EIOH will host major clinical and scientific events with world-renowned speakers, followed by the Centennial Celebration Gala.

For more information and event updates, please visit eioh100years.urmc.edu, and to participate in our many Centennial Celebration events contact Karen_Black@urmc.rochester.edu.

To ensure you continue to receive information about our upcoming Centennial Celebration, please let us know of any address, phone, or e-mail changes by contacting us at alumni@admin.rochester.edu.





EASTMAN
INSTITUTE FOR ORAL HEALTH

Larry and Cindy Bloch
Alumni and Advancement Center
300 East River Road
PO Box 278996
Rochester, NY 14627
(800) 333-4428, *toll-free*
eioh@alumni.rochester.edu