

Division of Medical Humanities & Bioethics



University of Rochester School of Medicine and Dentistry

Medical Humanities & Bioethics Pathways

The Medical Humanities & Bioethics Pathways provide medical students with an enriched experience throughout their four years of medical school.

Bioethics Pathway Director

Margie H. Shaw, J.D., Ph.D.

Medical Humanities Pathway Director

Stephanie Brown Clark, M.D., Ph.D.

Pathway Coordinator

Christine Donnelly

MEDICAL HUMANITIES & BIOETHICS

PATHWAYS GOALS



- To provide creative, research or teaching opportunities for students with interest and skills in humanities and ethics.
- To develop student's knowledge, skills and attitudes about the practice of medicine and the care of patients through the study of methods and perspectives from humanities/arts and bioethics.
- To reinforce the biopsychosocial approach to patient-centered, humanistic practices through the integration of humanities/arts and bioethics with clinical sciences in the curriculum.

MEDICAL HUMANITIES & BIOETHICS PATHWAY COMPONENTS



1. Diverse Medical Humanities, Arts and Bioethics Events and Activities
2. Medical Humanities, Arts and Bioethics Summer Study Awards*
3. Medical Humanities, Arts & Bioethics Electives
4. Project with a Faculty Mentor(s)
5. Certificate and Notation in Dean's Letter for Residency Programs

** NOTE: Not required but an option for Yr 1 students – competitive award*

YEARS 1 & 2



- **Submit Preliminary Application** by Nov 15, 2019
 - Project Idea or Question
 - Mentor(s)

- **Medical Humanities Seminars**
 - Y1 attend three 2 hr Medical Humanities Seminars (Spring semester)
 - Y2 attend three 2 hr Medical Humanities Seminars (Fall semester)

- **Meet with Pathway Mentor** to:
 - Identify Medical Humanities/Bioethics interests, learning goals and appropriate activities
 - Identify, research and develop a project
 - Sign-off by mentor on requirements and plan

- Submit **Pathway Check Sheet** to Pathway Director (due May 15 in Y1 & Y2)
 - Signed by Mentor and Advisory Dean

YEARS 3 & 4



- **Bioethics Pathway - Electives**
 - MHU602 Clinical Ethics Elective (2 weeks mandatory)
 - MHU603 Clinical Ethics Research Project (optional)

- **Medical Humanities Pathway - Electives**
 - MHU615 Independent Creative/Research Projects (optional)

- Two page **Project Proposal** due June 30 in Y3

- **Pathway Project Progress Check Sheet** due Oct 15 in Y4

- **Year 3/4 Pathway Check Sheet** due Feb 1 in Y4

- Completed **Pathway Project** with mentor's feedback due Feb 1 in Y4

MEDICAL HUMANITIES & BIOETHICS EVENTS & ACTIVITIES



Must attend at least **8 events** each year in Y1, Y2 and Y3/4

- Medical Humanities or Bioethics Interest Group activities
- Noon Conference Series
- Special Interest Groups
- Community Engagement Activities
- Health and Human Values Annual Grand Rounds Presentations
- Events in Rochester that integrate humanities/bioethics and healthcare

MEDICAL HUMANITIES & BIOETHICS PATHWAY PROJECT



- Completed Projects must be submitted by February 1 in Y4
- Students must meet regularly with Project mentor to plan, develop and sign off on project
- Projects may include
 - a bioethics, history, narrative or visual arts research project
 - a creative project (visual arts, narrative, film, photography, theatre)
 - an educational project (develop and teach a Medical Humanities elective with a faculty co-teacher during Y4)

DEADLINES



- Year One
 - Oct 14 – Medical Humanities and Bioethics Pathways information session
 - Nov 15 – Preliminary Application due
 - May 15 – Year 1 Check Sheet due

- Year Two
 - Nov 15 – Formal Application due
 - May 15 – Year 1 Check Sheet due

- Year Three
 - June 30 – Two page Project Proposal due

- Year Four
 - Oct 15 – Pathway Project Progress Check Sheet due
 - Feb 1 – Year 3/4 Check Sheet due
 - Feb 1 – Completed Project with mentor's feedback due

CERTIFICATE & DEAN'S LETTER



- Students who complete all Pathway requirements will receive a Pathway Certificate at graduation and a notation about their Pathway work in their Dean's Letter to residency programs.
- Completion of the Pathway is also recorded on students' permanent transcript.

EXAMPLES OF PATHWAY PROJECTS



CREATIVE

David Valentine

Project: Broken Bodies and a Piece of Autobiography- a collection of short stories

Michele Villa-Castillo

Project: Our Hands—a series of paintings of the hands of her colleagues as 3rd year students

Jason Reminick

Project: Medicine and Theatre: production of Sydney Kinsley’s 1934 play, “Men in White” and Medicine in Musicals: A Broadway Cabaret

Eric Hansen

Project: Greedy Docs? Why the British medical profession accepted universal health care while the American profession rejected it.

Bethanne Bartscherer

Project: Homeless Voices: Stories from the Streets of New York City- Wordpress Blog

MEDICINE IN MUSICALS II

A Broadway Cabaret

Presented by the Medical Doctor's Theatre Project
University of Rochester School of Medicine and Dentistry
Division of Medical Humanities



MEDICINE IN MUSICALS II

Produced and Directed by Jason Remnick

Saturday, May 11th 8pm
Sunday, May 12th 8pm

The Auditorium
at the University of Rochester
Alumni and Advancement Center
300 East River Road, Rochester, NY 14627

**Free Admission
Free Parking**

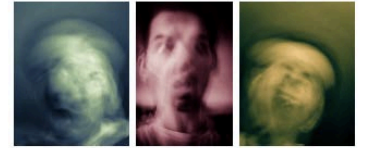
Open to the Entire Rochester Community

Facebook: Medicine In Musical
Twitter: @MedicineMusical

Questions? Contact MedicineMusicals@gmail.com



BROKEN BODIES



AND PIECES OF AN AUTOBIOGRAPHY

by David A. Valente

HOMELESS VOICES: STORIES FROM THE STREETS OF NEW YORK CITY



Featured
DAVID WICHERN'S STORY



Featured
A FORMER BUSINESS OWNER'S STORY



Featured
MICHAEL'S STORY



WEBSITE



<https://www.urmc.rochester.edu/medical-humanities/pathways/bioethics.aspx>

The screenshot shows a web browser window with the following elements:

- Browser tab: My URMC – Blackboard
- Address bar: <https://learn.rochester.edu/webapps/p>
- Navigation icons: Back, Forward, Refresh, Home
- Utility icons: Apps, Tentaco log in, UR Financials Log, MedSIS
- Header: UNIVERSITY of ROCHESTER MEDICAL CENTER
- Content area: SMD Medical Student Links
 - [MedSIS](#)
 - [MedHub](#)
 - [Patient Encounter Recordings](#)
 - [Elective Pathways](#) (highlighted with a red dashed box)
 - [Histo-Pathology Slides](#)
 - [BLine](#)
 - [Ask Jane \(requires URMC network connection\)](#)

In Blackboard, under SMD Medical Student Links, there is a link to 'Elective Pathways'.

