

School of Medicine and Dentistry

The Medical Scientist Training Program

MSTP NEWSLETTER



VOLUME 2, ISSUE 2

UNIVERSITY OF ROCHESTER

SPRING, 2006

Message from our Program Director

M. Kerry O'Banion, MD, PhD

In May of this year I was invited to the University of Illinois School of Medicine at the Chicago Campus to speak to their MD/PhD Program Students about research careers and my personal journey through science. It was an honor to address the group and learn from their program, but it also provided me an opportunity to reflect on those forces I found most important in shaping my own scientific career. After much consideration of the high and low points as I progressed from undergraduate and graduate researcher to PI, I recognized three guiding principles that seem worthy of sharing. There may be others, and of course, each person's path is different, but three critical factors that shaped my "Opportunities for Research" include:

Serendipity: opportunities present themselves in the laboratory. It is important to point out that serendipity is not the dumb luck of chance (though that may sometimes play a role), but represents the ability to recognize a new pattern, a new fact, or a new principle when evidence falls on an observant and prepared mind. My best example of serendipity is when my postdoctoral mentor, Dr. Donald Young, and I were looking at an autoradiogram together in a darkened room, puzzling over a faint and unexpected band. Don said, "Maybe there is another gene." I tucked that statement away and spent the next few months trying to prove him wrong, stuck in the dogma of the time. But ultimately he was right, resulting in our discovery of COX-2.

Engagement with Others: the interaction between Don and me is an example of another critical factor, which is engagement with others. Science is a community activity that thrives on interaction. One's opportunities depend on associations with mentors, with colleagues, and with trainees. In this last instance, I can describe several major projects that arose from single questions asked by skeptical graduate students or technicians.

Struggling with a Question or Problem: opportunities are created by due process that revolves around the day-in and day-out activities of science. As a graduate student this meant seeking the "right experiment", spending many hours in the lab, and not settling for poor quality data. As a PI this means laying out a grant proposal that delves deeply into a problem, providing an outline for a series of studies that build on one another to address a hypothesis. Research is a continued reassessment of questions and answers.

TABLE OF CONTENTS	
Director's Message	1
Calendar of Events	2
What's New?	2
Past Events	3
Graduating Class of 2006	6
Student Highlights	7
Honors and Awards	8
Alumni News	11
Alum Brad Berk assumes new leadership position at Rochester	11

Although I have couched these comments in the context of research, it should be obvious that all three are equally applicable to the clinical situation. Indeed, the role of the physician-scientist and physician-scientist trainee is to freely move opportunities gained in one setting to another (i.e. the clinic to the lab and vice versa). It is in this way that science and medicine will move forward to new discoveries that will impact human health.

Calendar of Events

July 1

- Whitewater rafting trip, Watertown, NY

July 7-9

- Annual National MD/PhD Program Student/Director/Administrator's Conference, Keystone, Colorado

August 11

- MSTP Annual Retreat, Casa Larga Winery

August 14

- School of Medicine Orientation for First Year Class begins

September 28-29

- First MD/PhD Applicant Interview Date

October 12-13

- MD/PhD Applicant Interview Date

October 26-27

- MD/PhD Applicant Interview Date

November 2-3

- MD/PhD Applicant Interview Date

November 16-17

- MD/PhD Applicant Interview Date

December 7-8

- MD/PhD Applicant Interview Date

Weddings

Yasser Elshatory (G1 in neuroscience) was engaged in February to Amira Eldesoky from Palmdale, California. May 19, 2006 was the big day with a honeymoon afterward in southern Spain!



Candace Gildner (G2 in BME) and **Adam Dziorny (G2 in BME)** were wed on June 11, 2006 at the Interfaith Chapel. Reception followed at Casa Larga Winery with a honeymoon in Europe. The happy couple met upon acceptance into the MSTP and we are honored that we played a small part in bringing them together!



WHAT'S NEW?

In this section, we highlight interesting information we receive about current students including special occasions, events and funny anecdotes.

Past Events

MSTP students challenged themselves on the man-made walls of RocVentures, an indoor rock-climbing gym on September 17. No injuries reported, thankfully!

On November 2, another seminar was held as part of the MSTP Seminar Series. Harold Smith, Ph.D., Professor of Biochemistry & Biophysics presented on his ventures into the private sector, as well as the powers of human immunodeficiency virus.

Upstate MD/PhD Conference hosted by University at Buffalo took place on November 12. This conference is held annually by 3 MD/PhD Programs and is rotated between UR, SUNY Upstate, and University at Buffalo. 13 MSTP students represented University of Rochester. **Dave Meoli (G2 in pharmacology/physiology)** gave an oral presentation, **Kate Eisenberg (G1 in epidemiology)** presented a poster.

The **MSTP Holiday Party was hosted by Susan Lee (M2) at her home on December 11, 2005.** The potluck dinner allowed everyone to enjoy homemade cooking, as well as lasagna and other entrees from Wegman's. A game called "Gift Exchange" was played by those who brought a wrapped mysterious gift. Some went home with what they wanted; others weren't quite so lucky!

Craig Jordan, Ph.D., Associate Professor of Medicine in Hematology/Oncology spoke on December 15 as part of the MSTP Seminar Series. Dr. Jordan's talk on "Characterization and targeting of malignant stem cells" was very well-attended and the luscious Indian food was enjoyed by all.

February 9 brought Fay Young, M.D., Assistant Professor of Medicine (Hematology/Oncology) as part of the MSTP Seminar Series. Dr. Young spoke on normal and abnormal B-lymphocyte development.

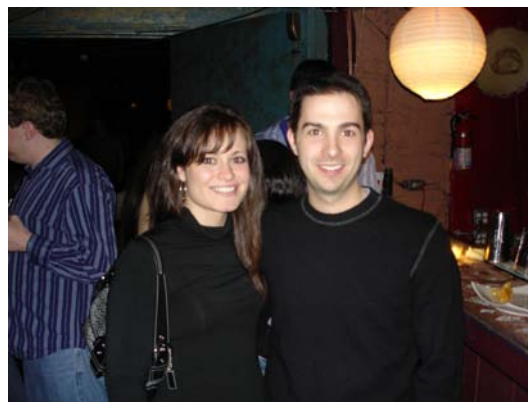
The annual Ski Day on February 11 was threatened by a lack of snow this year. However, Mother Nature cooperated that week with a hefty 6 inches which made the green slopes much more ski-able!

MSTP students and advisors discussed issues related to their training at the annual **Physician-Scientist Advisor Dinner on February 15 at the Meliora on River Campus.**



From left to right: Susan Lee, Kofi Mensah, Shuolun Ruan and Vincent Fong (all M2's).

The annual **MSTP Revisit** for accepted applicants was held **March 31-April 1, 2006.** A total of 8 applicants returned for a weekend of fun, posters, food and tours. An additional MSTP applicant returned the following weekend as part of the medical school-hosted **Second Look.**



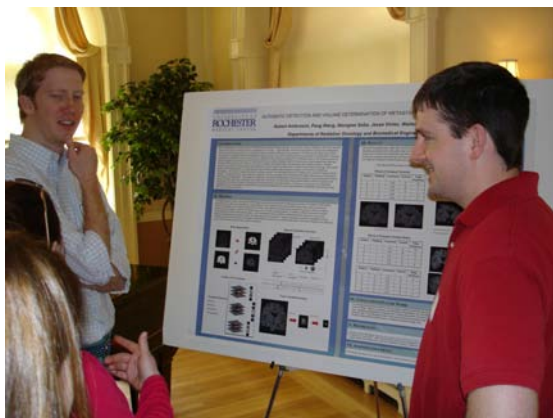
Revisit student dinner organizer Dave Meoli (G3 in pharmacology/physiology) and friend at Tapas 777 restaurant

MSTP NEWSLETTER

VOLUME 2, ISSUE 2

UNIVERSITY OF ROCHESTER

SPRING, 2006



Alex Pearson (G2, left) and Jim Hart (G2) discuss Rob Ambrosini's (G2) poster at Revisit Luncheon on March 31, 2006



Our MSTP co-directors at Revisit luncheon: Doug Turner, Ph.D. & Kerry O'Banion, M.D., Ph.D.

We made it through the dull month of March by having a **Barley & Hops Tasting on Wednesday, March 15** hosted by Sol Shaftef (G4 in neurobiology & anatomy) and Thad Carlson (G4 in microbiology & immunology). Thad filled us in on home-brewing techniques and even brought a sample for us to try!

The annual trip to the **Maple Tree Inn** in the southern tier for pancakes on **Sunday, April 2** brought a huge turnout! Amazing what a few (all-you-can-eat!) homemade buckwheat pancakes with real maple syrup will do!



Dr. Ed Puzas' (Professor of Orthopaedics and Director, Musculoskeletal Research Unit) seminar on Friday, April 7 was extremely interesting with a great turnout. Dr. Puzas spoke to the students about balancing career and family, his golf career (he almost went pro!), meeting Tiger Woods, as well as his state-of-the-art research on environmental toxins as new risk factors for osteoporosis. A delicious dinner was provided by Taste of Thai Restaurant.

The annual **MD/PhD Program Graduation Party** was held **Sunday, April 30** at Mario's via Abruzzi to honor our 3 graduates: Tony Flores, Jason Homsy and Toni Eyssallenne. An enormous, scrumptious brunch was enjoyed by 40 MD/PhD students, guests, faculty and staff.



Past Events, con't.



Graduation Party (left to right: Ana Tablante, G1, Kevin Makino, G2 in Health Services Research, Mike Wu, M2, Michael Jacob, M2)

May 11 brought the final MSTP seminar of the year: **Steve Strittmatter, M.D., Ph.D.**, Professor of Neurology visited from Yale University. Dr. Strittmatter spoke on "Myelin limits axonal plasticity and regeneration in the adult central nervous system". Dinner was catered by Dinosaur Barbeque and even the vegetarians enjoyed the portobello mushroom sandwiches!

MD/PhD students in second year graduate school came together for a photo shoot for the 2006 yearbook to honor the medical school class they began with



(left to right: Rob Ambrosini, Mike Moravan, Amish Naik, Jim Hart, Alex Pearson, Conan Kinsey, Dave Meoli, Sarita Kishore. Missing: Nancy Ann Oberheim)

Congratulations MD/PhD Program Graduating Class of 2006



May 19 was the School of Medicine Commencement ceremony at Eastman Theatre. We are proud to announce that three of the 99 graduates are from the Medical Scientist Training Program.

Antonia (“Toni”) Eyssallenne entered the MD/PhD Program in August, 1997 after graduating with a B.S. in medical laboratory science from Hunter College in New York City. She received a Ph.D. in pathology, successfully defending her thesis in 2004 entitled “The Influence of p190 bcr-abl on B-lymphopoiesis”. Advisor was Fay Young, M.D., Associate Professor of Medicine. Toni will be moving to Miami, FL to Jackson Memorial Hospital to do a medicine internship followed by a pediatric residency.

Anthony (“Tony”) Flores received a B.S. in zoology from University of Wyoming in Laramie, WY in 1996 and we were honored when he decided to enter our MD/PhD Program in August, 1998. Tony successfully defended his thesis on “B-Lactam Antibiotic Resistance in *Mycobacterium smegmatis* and *mycobacterium tuberculosis*” in 2004. His thesis advisor was Martin Pavelka, Ph.D., Assistant Professor of Microbiology & Immunology. He and his wife Paula are moving to Houston, TX where Tony will be entering the pediatric residency program at Baylor College Medical Center.

Jason Homsy completed a B.A. in biochemistry at Clark University in Worcester, MA before entering the MD/PhD Program at Rochester in August, 1997. Jason did his graduate work in the lab of Dirk Bohmann, Ph.D., Professor of Biomedical Genetics. He obtained a Ph.D. in genetics after defending in 2004 with a thesis entitled “Investigations in Characterizing the Role and Regulation of the JNK Cascade in Morphogenetic Events of *Drosophila Melanogaster*”. Jason will be moving to Boston, MA to do an internal medicine residency at Boston University Medical Center.

Our best wishes and congratulations for all the years of hard work go out to Toni, Tony & Jason! You will now officially be moved to the Alumni page of the newsletter for the Fall issue...

STUDENT HIGHLIGHTS



Tara Arndt (G2 in toxicology) graduated from the University of Washington in 2001 with degrees in neurobiology and psychology. While working at a private clinic for children with developmental and communication disorders in college, she developed an interest in autism spectrum disorders. A fourth year MSTP student in the laboratory of Patricia Rodier, she has continued to pursue her interest by investigating the early origins of autism. Specifically, her research focuses on neurobehavioral studies of children with autism, comparing children who developed autism after exposure to valproic acid in utero and children with idiopathic autism. This research is supplemented by neurobehavioral and anatomic studies of rats exposed to valproic acid in utero. This summer, Tara will be conducting studies of two geographically distinct populations of children with fetal valproate syndrome and autism - at Massachusetts General Hospital in Boston and at the University of Aberdeen in Scotland.

In addition to her travels for research activities, Tara has participated in the Saturday School program, a tutoring program for children at Rochester City School District School #7, for four years, and has been a student coordinator for the last three years. Her interests outside of research include reading, learning new recipes, traveling, jogging in Rochester's many parks in the summer, and snowboarding in the winter.

After finishing medical school, Tara would like to continue conducting research in the area of autism and teratology of other developmental disorders. She plans to do her clinical training in a pediatric specialty that treats children with autism spectrum disorders and fetal anticonvulsant syndromes or in Maternal Fetal Medicine, caring for mothers whose pregnancies are at an increased risk because of exposures to toxicants or due to genetic risk factors.



Kofi Mensah, a second year medical student in the Medical Scientist Training Program, grew up in New York City and attended the Townsend Harris High School, whose alumni include such notables as Ira Gershwin, Eugene Lang and Jonas Salk. From there, he entered the Rochester Early Medical Scholars (REMS) BS/BA-MD program at the University of Rochester in 2000 where he received a bachelor of science in microbiology and immunology as well as a certificate in biotechnology. He maintained a sense of academic well-roundedness outside of the biological sciences by completing a minor in Spanish and a minor in health and society. The summer after his freshman year, he did epidemiological research on Alzheimer disease at the Parker Jewish Institute for Health Care and Rehabilitation. He presented the results of this research at an international conference in Stockholm, Sweden, where the idea of MD-PhD was first introduced to him by a Rochester faculty member whom he met and the name Kerry O'Banion was mentioned as someone to contact when he returned to Rochester. Toward the middle of his junior year, he was awarded a fellowship that allowed him to spend two summers doing basic research in

rheumatology and immunology with a major pharmaceutical company. During the time leading up to the start of this fellowship, Mensah began to think about the role research may play in his medical career. He

felt that the best way for him to make a contribution in medicine would be to help increase the body of knowledge about human disease through research, to help find ways to apply the findings of that research to improve human health, and to help ensure that these benefits were accessible to those who need them. He felt his academic pursuits in college would suit him well for beginning such a career, but felt that he may need more solid research training to complement the MD degree.

After the summer fellowships, and after speaking with Kerry O'Banion, M.D., Ph.D., Director of the Medical Scientist Training Program, Mensah applied and was accepted to the University of Rochester School of Medicine in 2004 as part of the MD-PhD program. During the first two years of medical school, Mensah has been very active in student groups. He was on the first-year class council and is currently on the interclass senate executive board. Mensah is also on the executive boards for the internal medicine interest group/ACP chapter, the UR AMA chapter, the UR SNMA chapter, and is the institutional representative to the American Physician Scientists Association. The summer after his first year, he completed a rotation in the Center for Musculoskeletal Research under the mentorship of Edward Schwarz, PhD and Christopher Ritchlin, MD, where he examined the effect of alpha-interferon on osteoclast development from monocyte precursors. The findings of the summer project have implications in understanding the symptomatology of lupus as well as providing insight to possible therapeutic avenues for erosive inflammatory arthritis. Mensah presented his research at the New York American College of Physicians (NYACP) Upstate scientific meeting in October 2005 and won first place in the medical student research category. He also presented at the Downstate NYACP scientific meeting in March 2006, where again he won first place. As a result of his wins, he was invited to present at the ACP Annual Session in Philadelphia in April, where he was one of five winners in the medical student research poster category out of 1600 submissions. With the excitement surrounding his recent successes, Mensah is ready to begin the PhD portion of the program in a few months.

HONORS AND AWARDS

Tara Arndt (G2 in toxicology) has a recent publication from research done in her thesis advisor's laboratory, Patricia Rodier, Ph.D., Professor of Obstetrics & Gynecology:

Hyman, S.L., **Arndt, T.L.** & Rodier, P.M. (2006) Environmental agents and autism: Once and future associations. *International Review of Research in Mental Retardation*, 30, 171-194.

Matt Bellizzi (M3; graduate work in neuroscience) was featured with his thesis advisor, Harris ("Handy") Gelbard, M.D., Ph.D., Professor of Neurology on [Newsday.com](http://www.newsday.com) for research conducted which determined that the process of thinking may actually be harmful to people with chronic brain diseases such as HIV dementia and Alzheimer's. This research was recently published in the prestigious, peer-reviewed **Journal of Clinical Investigation**:

Bellizzi MJ, Lu S.M., Masliah E., and Gelbard H.A. (2006) Synaptic activity becomes excitotoxic in neurons exposed to elevated levels of platelet-activating factor. *J. Clin. Invest.* 115, 3185-3192.

Yasser Elshatory (G1 in neuroscience) received a prestigious medical student fellowship award from the Research to Prevent Blindness Foundation for his grant application submitted recently. This fellowship is used for recipients to conduct ophthalmology research and will support Yasser for the coming year.

Antonia ("Toni") Eyssallenne (M4; Ph.D. in pathology) was awarded the Kenneth Woodward Memorial Award at the University of Rochester School of Medicine Commencement ceremony on May 19, 2006. This award recognizes students who have outstanding prospects for careers in improving the health status of underserved patients. Congratulations, Toni! We're very proud of you.

Jason Homsy (M4) is first author on a paper from research conducted in the lab of Dirk Bohmann, Ph.D., his advisor in the field of biomedical genetics.

Homsy J.G., Jasper H., Peralta X.G., Wu H., Kiehart D.P., and Bohmann D. (2006) JNK signaling coordinates integrin and actin functions during *Drosophila* embryogenesis. *Developmental Dynamics* 235:427-434.

Susan Lee (M2) has three recent publications from research performed at the Ahmanson-Lovelace Brain Mapping Center at UCLA prior to her matriculation into the MD/PhD Program.

Wang T.A., **Lee S.S.**, Sigman M., and Dapretto M. (2006) Neural basis of irony comprehension in children with autism: The role of prosody and context. *Brain* (in press).

Lee S.S. and Dapretto M. (2006) Metaphorical vs. literal word meanings: fMRI evidence against a selective role of the right hemisphere. *NeuroImage*, 29, 536-544.

Dapretto M., **Lee S.S.**, and Caplan R. (2005). A functional magnetic resonance imaging study of discourse coherence in typically developing children. *Neuroreport*, 16, 1661-1665.

Kofi Mensah (M2) contributed an article to the American Physician Scientists Association (APSA) first Newsletter entitled: "Physician and Scientist ... Two Strands of the Helix?" As you might guess, this article describes curricular elements at Rochester (and other institutions) that reinforce the bridge between basic research and clinical medicine.

Amish Naik (G2 in pathology-orthopaedics specialty) was recently honored with being voted President of the UR's Graduate Student Society for the academic year 2006-07 by his fellow graduate students.

Nancy Ann Oberheim's (G2 in neuroscience) advisor, Maiken Nedergaard, M.D., DMSc., Professor of Neurological Surgery was featured on an MS NBC story on the web in which one of Nancy Ann's photos was used: <http://www.msnbc.msn.com/id/10740024/> Another photo which Nancy Ann took was featured on the cover of **Nature Neuroscience** in February, 2006.

Alexander Pearson (G2 in biostatistics; Michael McDermott, Ph.D., advisor) received a cash merit award for his poster at the 2006 Graduate Student Society Poster Contest in May held in the Flaum Atrium at the University of Rochester School of Medicine.

Solomon Shaftel (G4 in neurobiology & anatomy; K. O'Banion/J. Olschowka, co-advisors) and **Thaddeus Carlson (G4 in microbiology & immunology; Ben Segal, M.D., advisor who also attended the conference)** were among 25 MD/PhD students selected worldwide to receive travel scholarships to present at the "Days in Molecular Medicine" Conference in Stockholm, Sweden on "Inflammation in Chronic Disease" held May 24-27, 2006. Congratulations on this great honor, Sol and Thad! We're proud you represented the University of Rochester's MD/PhD Program in Stockholm.

Mercedes Szpunar (M1) recently had a paper published for a project she participated in prior to matriculating to the MD/PhD Program during the summer of 2004 at Argonne National Laboratory:

Wilton R., Yousef M.A., Saxena P., **Szpunar M.**, and Stevens F.J. (2006) Expression and purification of recombinant human receptor for advanced glycation endproducts in *Escherichia coli*. *Protein Expr Purif.* 47:25-35.

MD/PhD Alumni – Let us hear from you.

Our goal is to hear something from each graduate of the program. When we hear from you we will **bold** your name as a sign of acknowledgement. We encourage you to contact us and watch us **boldly** grow. **We need current e-mail addresses for names in RED.** Please contact Cathy Senecal-Rice, Administrator, MD/PhD Program at: cathy_senecalrice@URMC.Rochester.edu

Ackerman, Kurt D., M.D. 1991, Ph.D. 1990
 Adam, Jamie, M.D. 2001, Ph.D. 2000
Anolik, Jennifer H., M.D. 1996, Ph.D. 1994
Arceci, Robert J., M.D. 1981, Ph.D. 1980
 Bahler, David W., M.D., Ph.D. 1987
 Berk, Bradford C., M.D., Ph.D. 1981
Bertuch, Alison A., M.D., Ph.D. 1993
Bleicher, Paul A., M.D., Ph.D. 1983
Bliss, Joseph, M.D., Ph.D. 1998
Breneman, Stephen, M.D. 1998, Ph.D. 1996
Brenner, Gary J., M.D., Ph.D. 1995
 Burkard, Mark, M.D. 2002, Ph.D. 2000
 Burkat, Paul, M.D. 2003, Ph.D. 2001
Cheng, Shinta, M.D. 1995, Ph.D. 1994
 Chin, Michael T., M.D. 1991, Ph.D. 1989
 Colbert, Robert A., M.D. 1987, Ph.D. 1986
Collins, Tucker O., M.D., Ph.D. 1981
Dedon, Peter C., M.D., Ph.D. 1987
Deng, Sophie, M.D., Ph.D. 2001
DiLoreto, David, M.D. 1997, Ph.D. 1995
DiPersio, John F., M.D., Ph.D. 1980
Dragone, Leonard L., M.D. 1996, Ph.D. 1994
Dubin, Marc J., M.D. 2004, Ph.D. 2002
 Dunn, Michael G., M.D., Ph.D. 1983
Feulner, Lisa Kale, M.D., Ph.D. 1995
Froehler, Michael, M.D. 2004, Ph.D. 2002
Gallo, Richard L., M.D., Ph.D. 1986
Gambello, Michael J., M.D., Ph.D. 1993
Goldstein, Barry J., M.D., Ph.D. 1982
Goldstein, Barry M., M.D. 1981, Ph.D. 1982
Greene, James, M.D., Ph.D. 1998
 Grimsrud, Christopher, M.D., Ph.D. 2000
Guillet, Ernest G., Jr., M.D., Ph.D. 1979
Guillet, Ronnie B., M.D., Ph.D. 1980
 Hall, Craig G., MD-PhD, 1984
Hallows, Kenneth R., M.D. 1995, Ph.D. 1994
Halterman, Marc, M.D. 2002, Ph.D. 2002
Hoefen, Ryan, M.D., Ph.D. 2005
Hsu, Lewis L., M.D., Ph.D. 1988
Huang, Willis, M.D. 2005, Ph.D. 2003
 Joseph, Luc, M.D. 1996, Ph.D. 1994
 Kasckow, John, M.D. 1987, Ph.D. 1986
Kenny, Alan, M.D. 2002, Ph.D. 2000
 Kim, James, M.D., Ph.D. 1999
Kim, Jin, M.D. 2000, Ph.D. 1998
Kimbrough, John, M.D., Ph.D. 2000
 Koh, Sookyong, M.D. 1991, Ph.D. 1989
Kruse, John, M.D. 1990, Ph.D. 1989
Kulas, Donald, M.D. 1997, Ph.D. 1995
 Lerner, Robert M., M.D. 1977, Ph.D. 1978 Lesser,
 Harold, M.D., Ph.D. 1989
 Lichtman, Andrew H., M.D., Ph.D. 1981

Love, Paul E., M.D., Ph.D. 1987
Malchoff, Carl D., M.D., Ph.D. 1978
 Martin, Stephen S. M.D., Ph.D. 1981
Massa, Stephen M., M.D., Ph.D. 1984
Mathews, David H., M.D. 2003, Ph.D. 2002
Maytin, Edward V., M.D., Ph.D. 1985
McAdam, Alexander J., M.D. 1995, Ph.D. 1994
McFarland, Nikolaus, M.D. 2002, Ph.D. 2000
Mendelsohn, Steven L., M.D., Ph.D. 1978
Mendler, Jason, M.D. 2005, Ph.D. 2003
Milano, Michael, M.D., Ph.D. 2000
 Nasir, Adnan, M.D. 1995, Ph.D. 1994
Navon, Samuel E., M.D., Ph.D. 1989
 Nead, Michael, M.D., Ph.D. 1999
 Nguyen, Minh-Doan Thi, M.D. 2002, Ph.D. 2000
Nichols, Alan R., M.D., Ph.D. 1980
 Nierenberg, Jay, M.D. 1997, Ph.D. 2001
Pallant, Adam D., M.D. 1991, Ph.D. 1990
 Palmer, Edward, M.D., Ph.D. 1980
Peale, Franklin V., Jr., Ph.D. 1989, M.D. 1990
Phung, Thuy L., M.D., Ph.D. 1999
Podell, David N., M.D., Ph.D. 1980
 Profenno, Louis, M.D., Ph.D. 1999
Proweller, Aaron, M.D., Ph.D. 1998
 Querfurth, Henry W., M.D., Ph.D. 1983
Ribes, Julie A., M.D., Ph.D. 1990
 Richards, Julie, M.D. 2004, Ph.D. 2002
Roberts, Alice, M.D., Ph.D. 1999
Roda, Ricardo, M.D. 2005, Ph.D. 2003
Roshal, Mikhail, M.D. 2005, Ph.D. 2003
 Rosier, Randy N., M.D., Ph.D. 1978
 Rubin, Edward M., M.D., Ph.D. 1980
Rumbaugh, Jeffrey, M.D., Ph.D. 2000
Sandhu, Faheem A., M.D. 1995, Ph.D. 1994
Scully, Sean P., M.D. 1986, Ph.D. 1985
 Seed, Patrick, M.D., Ph.D. 1998
 Senyk, Oksana, M.D., Ph.D. 1984
 Shimamura, Akiko, M.D. 1991, Ph.D. 1990
Snyder, Lawrence H., M.D., Ph.D. 1992
Storozynsky, Eugene, M.D. 2000, Ph.D. 1998
 Tan (Cheun), Jane E., M.D. 1995, Ph.D. 1993
 Thertulien, Raymond, M.D. 1994, Ph.D. 1992
Thom, Stephen R., M.D., Ph.D. 1981
 Toribara, Neil W., M.D. 1981, Ph.D. 1982
 Waldman, David L., M.D., Ph.D. 1988
 Williams, Joseph, M.D., Ph.D. 1989
Williams, Marshall T., M.D., Ph.D. 1980
 Wilson, Robert E., M.D., Ph.D. 1989
 Wingrove, Douglas E., M.D. 1987, Ph.D. 1986
Winn, Virginia Dragone, M.D. 1996, Ph.D. 1994
Zambidis, Elias, M.D., Ph.D. 1998

Alumni News

Thank you to everyone who responded to our plea to contact us. Feel free to keep us up-to-date. Enjoy reading about your fellow alumni. We hope to hear from many more. Please send correspondence to: cathy_senecalrice@urmc.rochester.edu

Jennifer Anolik, MD, PhD (M'96, Ph.D.'94) was honored for her research on lupus and rheumatoid arthritis recently by being chosen to give the prestigious Dubois Memorial Lectureship by the American College of Rheumatology. <http://www.urmc.rochester.edu/pr/news/story.cfm?id=1101>
Jennifer tells us: "my husband Adam is the Director of Finance at SMH. I have two daughters, both of whom I had while working on my PhD here. Ellie turns 16 in August, and Sarah just turned 14. We live in Brighton. In my spare time, the little I have, I enjoy gardening and creating stained glass art. I made a Tiffany style lamp while I was a resident, but with fitting it in between the obligations of residency it took me 3 years to complete!"



University of Rochester President Joel Seligman announced on 7/10/06 that **Bradford C. Berk, M.D., Ph.D.**, has been selected as the new Senior Vice President for Health Sciences and CEO of the University of Rochester Medical Center (URMC) and its patient care network, Strong Health. Dr. Berk will assume the post on August 1, 2006.

Dr. Berk received the M.D. and Ph.D. degrees in 1981 while in the Medical Scientist Training Program at the University of Rochester. He received his Ph.D. in Pharmacology from work done in his advisor's laboratory, Patricia Hinkle, Ph.D. Most recently, he was Chair of the Department of Medicine, Chief of the Cardiology Unit and Director of the Center for Cardiovascular Research at Rochester. Dr. Berk has also been a member of the MSTP Executive Committee since 2000. In his remarks following the announcement, Dr. Berk indicated that "his experience as a physician is inextricably linked to URMC as I was a medical student here from 1975-1981 in the Medical

Scientist Training Program. On one hand, I practice medicine to provide health care to my patients in Rochester and the surrounding communities. On the other hand, I study cardiovascular physiology to make fundamental contributions to medical research internationally. The University of Rochester is an institution that encourages this duality and helps faculty succeed. This duality is a role that I find comfortable having maintained my own duality of being a practicing MD, PhD, a physician- scientist. Specifically, my role is to make it possible for people to achieve their full potential to make a difference both clinically and scientifically. We must embrace this duality of clinical and research experiences, as the greatest advances in medicine occur at the intersection of these two activities." Further details about Dr. Berk's appointment and vision for the University of Rochester Medical Center can be found at: http://www.urmc.rochester.edu/vp_healthsciences/index.cfm.

MSTP NEWSLETTER

VOLUME 2, ISSUE 2

UNIVERSITY OF ROCHESTER

SPRING, 2006

Leonard Dragone, MD, PhD (M'96, Ph.D. '94) and wife **Virginia Winn, MD, PhD** (M'96, Ph.D. '94) have recently accepted faculty positions in Denver, Colorado. Lenny is Assistant Professor of Pediatric Allergy, Immunology and Rheumatology at the National Jewish Medical & Research Center at Denver Children's Hospital. Virginia is Assistant Professor of Obstetrics and Gynecology at the University of Colorado Health Sciences Center. They have two beautiful children, Kathryn Keeley, age 6 and Samuel Winn, age 4, pictured below. Lenny and Virginia were the first couple to meet and marry in the MD/PhD Program. Now, we have another couple: **Candace Gildner** and **Adam Dziorny** (see pg 4).



Michael Froehler, M.D., Ph.D. (M '04, PhD '04), is currently doing a neurology residency at Johns Hopkins Bayview Medical Center. Mike and wife Holly recently gave birth to a baby girl, Elise Clare, 7 lbs. 2 oz. on 2/27/06. Mike and Holly are thrilled to be first-time parents! We extend our heartiest congratulations.



Barry J. Goldstein, MD, PhD, F.A.C.E. (M'82, PhD'82) is Director of the Division of Endocrinology, Diabetes and Metabolic Diseases at Jefferson Medical College in Philadelphia, PA. He is associate editor of the journal **Diabetes** and was recently elected to AAP (Association of American Physicians).

James Greene, MD, PhD (M'98, PhD'98) is Assistant Professor of Neurology at Emory University School of Medicine. Jim's research involves investigation into the pathogenesis of Parkinson's disease and the selective vulnerability of dopamine neurons. Jim and wife **Yvonne M. Greene** (M'94) reside in Atlanta, Georgia.

Kenneth Hallows, MD, PhD (M'95, PhD'94) is Assistant Professor of Medicine, Cell Biology and Physiology at the University of Pittsburgh School of Medicine in the Renal-Electrolyte Division. Dr. Hallows tells us that he is a physician scientist who spends 80% of his time on basic research concerning the regulation of epithelial ion transport. He also spends 6-8 weeks as an inpatient attending on the renal consult service and teaches both medical and graduate school courses at U. Pittsburgh. He and wife Wendy enjoy spending time with their children Brian (12) and Alexander (8) playing "geocaching" a rapidly growing worldwide game involving GPS units (www.geocaching.com) - sort of a high-tech treasure hunt.

Marc Halterman, MD, PhD (M'02, PhD'02) is currently an Instructor in Neurology and Fellow in the Experimental Therapeutics Training Program at the University of Rochester where he focuses his clinical efforts in the area of movement disorders. His research interests relate to understanding the mechanisms which promote neurodegeneration in Parkinson's disease and other related disorders. Marc and wife **Jill Segel Halterman** (M'94) have two children Justin (age 8) and Rebecca (age 4).



(Neurology Residency Graduation, left to right: Drs. Anthony Maroldo, Adam Kelly, John Sullivan, and Marc Halterman)

Ryan Hoefen, MD, PhD (M'05, PhD'05) is a resident in internal medicine at Strong Memorial Hospital, Univ. Rochester. Ryan and **Makiko Ban-Hoefen** (M'05) were married in 2005, right after graduation. Ryan enjoys gourmet cooking, building ponds and gardens, in his (very) spare time!

Alan Kenny, MD, PhD (MD'02, PhD'00) is a Clinical Fellow in Neonatal-Perinatal at Cincinnati Children's Hospital Medical Center in Cincinnati, Ohio. His research is aimed at understanding organ specification in *Xenopus laevis*. In his spare time, Alan enjoys running and playing guitar. The BIG news is that Alan and his wife Laura Cancilla Kenny are expecting their first child! Best wishes from all of us!

David Mathews MD, PhD (M'03, PhD'02), Assistant Professor in the Departments of Biochemistry & Biophysics at the University of Rochester School of Medicine was recently selected as an Alfred P. Sloan Research Fellow. A very impressive article on this award as well as mention of our very own co-director, **Doug Turner, PhD** (David's graduate advisor) was recently published in **Currents**, the UR weekly newspaper: <http://www.urmc.rochester.edu/pr/news/story.cfm?id=1088>

MSTP NEWSLETTER

VOLUME 2, ISSUE 2

UNIVERSITY OF ROCHESTER

SPRING, 2006

Jason Mendler, MD, PhD (M'05, PhD '04), pediatric resident at Strong Memorial Hospital, University of Rochester and wife **Laticia Valle-Mendler** (M'02) are proud first-time parents of TWINS! Caleb Ian Mendler and Ava Kathryn Mendler were born on Valentine's Day, 2006. Caleb weighed 4 lbs., 13 oz. and was 18 inches in length, Ava was 4 lbs. 8 oz. and 17 inches in length. Best wishes to the brand-new Mendler family!



We hope you have enjoyed reading about your fellow alumni and current MD/PhD students. We thank everyone who wrote and sent in pictures and hope it will inspire others to do the same. If you would like to communicate with any of your fellow alumni, please send an email with the name of the person to Cathy Senecal-Rice: cathy_senecalrice@urmc.rochester.edu This may be an avenue for current MD/PhD Program students to network with alumni that have a common interest. In this way, privacy is secured and the recipient has the choice whether to reply or not. Again, thank you for participating.

This Newsletter was designed and distributed with the direction and approval of the Medical Scientist Training Program Executive Committee. If you do not wish to receive future mailings please e-mail this request to Catherine Senecal-Rice at: cathy_senecalrice@urmc.rochester.edu and your name will promptly be removed from our distribution list.