

Capacity Building Projects Applicant Webinar

Dec. 7, 2023

University of Rochester

Environmental Health Sciences Center

Community Engagement Core

Who are we?

- University of Rochester Medical Center
- National Institute of Environmental Health Sciences
- Environmental Health Sciences Center (EHSC)
 - Community Engagement Core
- Institute for Human Health and Environment (IHHE)
 - Engagement Pillar



What do we do?

- Translate environmental health research to meet community needs
- Identify community concerns to guide environmental health research
- Focus on environmental justice in City of Rochester, but scope extends to other cities, regions, and issues
- Historical focus on environmental exposures (lead, air pollution, chemicals in consumer product & food); IHHE broader (climate change & environmental justice)
- Informed by Community Advisory Board
- Sustain and participate in community partnerships

Capacity Building Project Program - why

- Many groups have environmental concerns, but lack capacity to “take the first step”
- Many groups that work in environmental justice communities have health concerns, but no track record of environmental work
- Need to develop “capacity” to

Capacity Building Projects - who

- Any non-profit organization in the Rochester region
- Project should focus on environmental health disparities, but group doesn't need to
- Key goal is building applicant's capacity to grow and sustain future environmental health "work," whether educational, policy, analysis
- Potential for future research partnerships

Capacity Building Program - what

- \$10,000 for 9-month grant; quarterly vouchers (reimbursement)
- Short proposals due in January
- Reviewed by team of EHSC/Community Advisory Board members
- Supported April 1-Dec 31 – funding and technical support
- Reporting Jan-Feb
 - Short written report
 - Short presentation to EHSC faculty
 - Community Advisory Board meeting or other event

Criteria for Selection

- Potential to address environmental health disparities in the greater Rochester region
- Potential to build the organization's capacity for future environmental health work
- Feasibility of the project (i.e., ability to achieve stated goals during project period)
- Evidence of support by contractors, partners, or participants (letter, past work, etc.)
- Project's Budget is complete, reasonable to meet the project's goals, and is within funding guidelines
- Potential of the project to establish a new partnership with the EHSC
- Plan for future action, funding, replicability, or sustainability

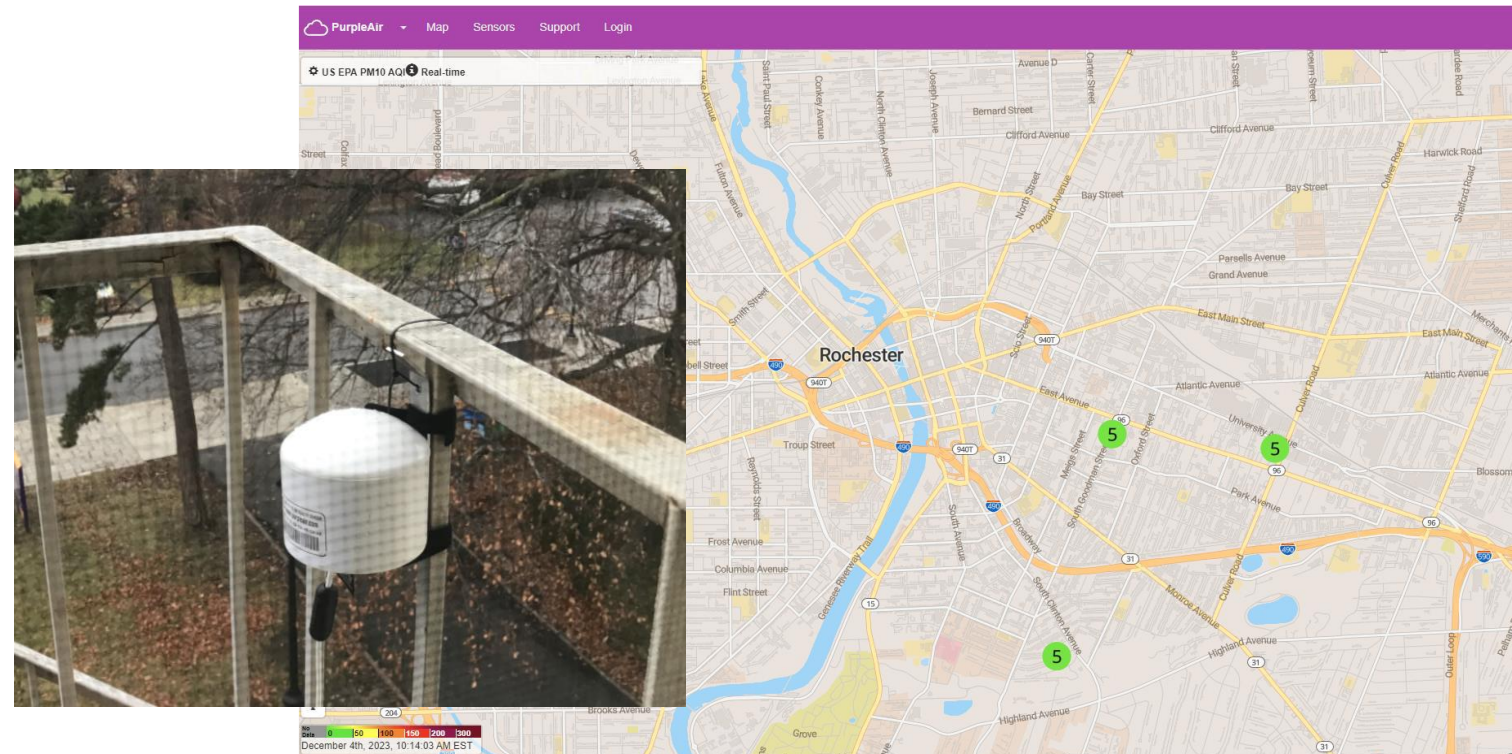
2022 Capacity Building Project: Tree Canopy Initiative

- Cornell Cooperative Extension of Monroe County
- Partnered with Marketview Heights Association and City
- Conducted guided tree walk, neighborhood workshops, resident surveys, identified locations and planted 30 trees
- Also worked with student volunteers and capstone project to support ongoing/future education
- Wrote 2 related proposals for future funding
- Continue to engage with citywide stakeholders interested in trees
- Joined Community Advisory Board 😊



2023 Capacity Building Project: Climate Action Days

- Rochester Museum and Science Center
- Supported student and community presenter costs to attend “Climate Action Days”
- Trained Discovery Guides about low-cost air sensors, air pollution, and health
- Installed air sensor at RMSC
- Ongoing intern developing activities for future use by RMSC



What's up this year?

- Possibility to support up to two projects
- Due Jan 19, 2024
- Open to many TYPES of projects:
 - Data collection/background research
 - Staff training or education
 - Grantwriting (up to \$5000) support
 - Project supplies, materials, computer/technology, space
 - Staff or student time (ours or yours)
- Ask us!



Your ideas and questions?