

PLEASE REVIEW INSTRUCTIONS BEFORE WE BEGIN THE ICS 100 WEBINAR

Joining Instructions

- Attendee phones have been placed on mute
- Open Participants and Chat Panel located at top of your computer screen
- Right Click on panels to move for better viewing of presentation
- Webinar will be recorded for future viewing

Attendance


- If you do not see your full name listed under "Attendees", provide your name to the Host using the Chat Function
- If you are hosting a group of participants in a room, notify the Host using the Chat Function. A group Sign-In Sheet should be emailed to Eileen_Spezio@urmc.rochester.edu or faxed to (585) 756-5098 by COB today. If you don't utilize the RTC sign-in sheet template, you must include course name, facility name (not system name), date and time on your facility Sign-In Sheet

Communication

- Check the Chat window during the presentation for important messages and instructions from the Host.
- Communicate with the host, panel and/or presenter using the Hand or Chat
 - Hand – request to be unmuted for a verbal question or comment
 - Chat – type questions, comments or suggestions during presentation



LMS Certificates

- Will be available to participants that registered for the course on the NYS Learning Management System www.nylearnsp.com



FEMA Emergency Management Institute


ICS 100
Introduction to the Incident
Command System

Your Hosts and Presenter

Hosts
Anne D'Angelo & Eileen Spezio
University of Rochester, Finger Lakes Regional
Training Center
anne_dangelo@urmc.rochester.edu
eileen_spezio@urmc.rochester.edu
wrhepc.urmc.edu

Presenter
Kevin O'Hara MS NRP CHEP
Stony Brook Medicine
Emergency Management Office
MARO Regional Training Center



Course Goal

The overall course goal is to promote effective response by:

- Familiarizing you with the Incident Command System (ICS) and the NIMS principles used to manage incidents.
- Preparing you to coordinate with response partners from all levels of government and the private sector.



IS-100.c provides information on ICS which is part of the National Incident Management System (NIMS). To learn more about NIMS following completion of this course, you can take IS-700.b: An Introduction to the National Incident Management System.



FEMA

Overall Course Objectives

At the completion of this course, you should be able to:

- Explain the principles and basic structure of the Incident Command System (ICS).
- Describe the NIMS management characteristics that are the foundation of the ICS.
- Describe the ICS functional areas and the roles of the Incident Commander and Command Staff.
- Describe the General Staff roles within ICS.
- Identify how NIMS management characteristics apply to ICS for a variety of roles and discipline areas.



FEMA

Course Structure

The course is divided into the following five units:

- Unit 1: Course Welcome and ICS Overview
- Unit 2: NIMS Management Characteristics
- Unit 3: ICS Functional Areas and Command Staff Roles
- Unit 4: General Staff Roles



FEMA

Unit 1: ICS Overview

Unit 1 provides an overview of the Incident Command System (ICS). At the end of this lesson, you should be able to:

- Describe the Whole Community approach to ICS.
- Identify the basic concept and benefits of ICS.



Whole Community

Every part of society must be involved in preparing for, protecting against, responding to, recovering from, and mitigating any and all incidents. The Federal Government is only one part of the whole community.

The **Whole Community** approach ensures solutions that serve the entire community are implemented, while simultaneously making sure that the resources the different members of the community bring to the table are used efficiently. These members include those in all levels of government as well as those in non-governmental and private-sector organizations in fields such as transportation, health care, schools, public works, communications, agriculture, chemical/nuclear, and more.



What is the Incident Command System?

The Incident Command System (ICS) is a standardized approach to incident management that:

- Is used for all kinds of incidents by all types of organizations and at all levels of government; ICS is applicable to small incidents as well as large and complex ones.
- Can be used not only for emergencies, but also for planned events.
- Enables a coordinated response among various jurisdictions and agencies.
- Establishes common processes for incident-level planning and resource management.
- Allows for the integration of resources (such as facilities, equipment, personnel) within a common organizational structure.



When is ICS Used?

The Incident Command System (ICS) can be used to manage any type of incident, including a planned event (e.g., the Olympics, the Governor's inauguration, state fairs, a local parade, etc.). The use of ICS is applicable to all types of incidents, regardless of their size or cause.

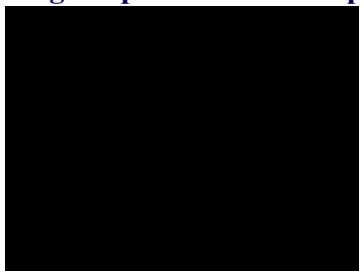
As a system, ICS is extremely useful. Not only does it provide an organizational structure for incident management, but it also guides the process for planning, building, and adapting that structure.

Using ICS for every incident or planned event provides the practice that will help to maintain and improve skills needed to effectively coordinate larger or more complex efforts.



FEMA

Incident Command System: Promoting Response Partnerships



FEMA

ICS as a Component of the National Incident Management System (NIMS)

The National Incident Management System (NIMS) is a systematic, proactive approach to guide all levels of government, nongovernmental organizations (NGOs), and the private sector to work together to prevent, protect against, mitigate, respond to, and recover from the effects of incidents. NIMS provides a consistent foundation for all incidents, ranging from daily occurrences to incidents requiring a coordinated Federal response.

NIMS is organized into three major components:

- Resource Management
- Command and Coordination - including the Incident Command System
- Communications and Information Management

It is important to note that the Incident Command System (ICS) is just one part of NIMS.



FEMA

Unit 1 Summary

You have completed the Course Welcome and Incident Command System (ICS) Overview unit. This unit presented the following key points:

- ICS is a standardized management tool that allows better coordination and use of resources.
- ICS represents organizational best practices and has become the standard for emergency management.
- ICS can be used to manage the response for all incidents and planned events.

ICS works! It saves lives!



FEMA

Unit 2 Overview

This unit presents the National Incident Management System (NIMS) management characteristics. These characteristics are the foundation of all NIMS command and coordination components, including the Incident Command System (ICS).

Objective:

At the end of this unit, you should be able to:

- Describe the 14 NIMS management characteristics.



FEMA

Making ICS Work

Effective incident management relies on a common organizational structure for managing resources, making decisions, and assigning tasks. The Incident Command System (ICS) uses a standardized management approach to ensure that incidents are properly managed and communications are effectively coordinated during an incident.

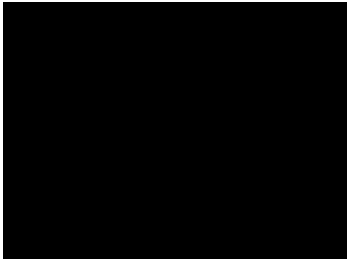



As an incident occurs, you may be called upon to assist – making you a part of this organizational structure. To ensure success, you should understand how this structure works.



FEMA

NIMS Management Characteristics: Overview






FEMA

19

NIMS Management Characteristics: Overview

The Incident Command System (ICS) is based on the following 14 proven NIMS management characteristics, each of which contributes to the strength and efficiency of the overall system:

- Common Terminology
- Modular Organization
- Management by Objectives
- Incident Action Planning
- Manageable Span of Control
- Incident Facilities and Locations
- Comprehensive Resource Management
- Integrated Communications
- Establishment and Transfer of Command
- Unified Command
- Chain of Command and Unity of Command
- Accountability
- Dispatch/Deployment
- Information and Intelligence Management




FEMA

20

Common Terminology

The Incident Command System (ICS) establishes Common Terminology that allows diverse incident management and support organizations to work together across a wide variety of emergency functions and hazard scenarios. This common terminology covers the following:


- **Organizational Functions:** Major functions and functional units with incident management responsibilities are named and defined. They remain standard and consistent.
- **Resource Descriptions:** Major resources including personnel, equipment, teams, and facilities are given common names and are typed with respect to their capabilities.
- **Incident Facilities:** Common terminology is used to designate the facilities in the vicinity of the incident area.



During an incident:

- Communications should use common terms.
- Organizations should avoid radio codes, agency-specific codes, acronyms, or jargon. Usage of these types of codes may cause confusion or possibly compromise life safety due to a misunderstanding or misinterpretation.

The goal is to promote understanding among all parties involved in managing an incident.



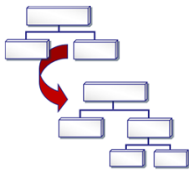
FEMA

21

Modular Organization

The Incident Command System (ICS) organizational structure develops in a modular fashion based on the incidents size and complexity.

- The responsibility for the establishment and expansion of the ICS modular organization rests with the Incident Commander.
- As the incident grows more complex, the ICS organization may expand as functional responsibilities are delegated.



FEMA

Management by Objectives

The Incident Commander or Unified Command (which will be discussed later), establishes incident objectives that drive incident operations.

Management by Objectives includes the following:

- Establishing specific, measurable incident objectives.
- Identifying strategies, tactics, tasks and activities to achieve the objectives.
- Developing and issuing assignments, plans, procedures, and protocols to accomplish identified tasks.
- Documenting results for the incident objectives.



FEMA

Incident Action Planning

Incident action planning guides effective incident management activities. An Incident Action Plan (IAP) is a concise, coherent means of capturing and communicating overall incident priorities, objectives, strategies, tactics, and assignments in the context of both operational and support activities. The IAP should focus on addressing the needs of future timeframes (called operational periods).

To be effective, an IAP should:

- Cover a specified timeframe
- Be proactive
- Specify the incident objectives
- State the activities to be completed
- Assign responsibilities
- Identify needed resources
- Specify communication protocols

For smaller/less complex incidents, the IAP may be oral or written, except for hazardous materials incidents, which require a written IAP. FEMA has developed a series of ICS Forms for use in developing a written IAP.



FEMA

Manageable Span of Control

Depending on your role within the Incident Command System (ICS) structure, you may be asked to manage the activities of others.

Span of control refers to the number of individuals or resources that one supervisor can manage effectively during an incident.

The optimal span of control is one supervisor to five subordinates (1:5).

However, effective incident management may require ratios significantly different from this. This ratio is a guideline—incident personnel should use their best judgement to determine the appropriate ratio for an incident.



Incident Facilities and Locations

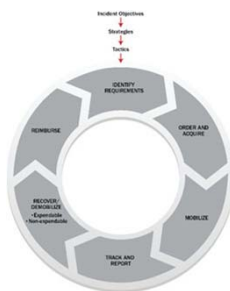
Depending upon the incident size and complexity, various types of support facilities may be established by Incident Command. These designated facilities typically include:

- Incident Command Post (ICP)
- Incident base, staging areas, and camps
- Mass casualty triage areas
- Point-of-distribution
- Emergency shelters



Comprehensive Resource Management

Comprehensive Resource Management describes standard mechanisms to identify requirements, order and acquire, mobilize, track and report, demobilize, and reimburse resources such as personnel, teams, facilities, equipment and supplies.



Integrated Communications

Incident communications are facilitated through the development and use of a common communications plan and interoperable communication processes and systems that include voice and data links.

Integrated Communications are necessary to:

- Maintain connectivity
- Achieve situational awareness
- Facilitate information sharing



FEMA

Establishment and Transfer of Command

The command function should be clearly established at the beginning of an incident. The jurisdiction or organization with primary responsibility for the incident designates the Incident Commander and the process for transferring command.



Transfer of command may occur during the course of an incident. When command is transferred, the process should include a briefing that captures all essential information for continuing safe and effective operations.

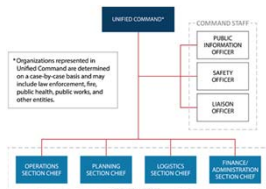


FEMA

Unified Command

In a Unified Command there is no single "Commander." Instead the Unified Command manages the incident through jointly approved objectives. Unified Command allows agencies with different legal, geographic, and functional responsibilities to work together effectively without affecting individual agency authority, responsibility, or accountability.

Unified Command is typically established when no single jurisdiction, agency or organization has the authority and/or resources to manage the incident on its own.



FEMA

Chain of Command

Chain of command is an orderly line that details how authority flows through the hierarchy of the incident management organization. Chain of command:

- Allows an Incident Commander to direct and control the actions of all personnel on the incident.
- Avoids confusion by requiring that orders flow from supervisors.



FEMA

Unity of Command

While chain of command relates to the overall hierarchy of the organization, unity of command deals with the fact that all individuals have a single designated supervisor they report to.

Based on the principle of unity of command, you will:

- Report to only one Incident Command System (ICS) supervisor.
- Receive work assignments only from your ICS supervisor.



When you are assigned to an incident, you no longer report directly to your day-to-day supervisor.



FEMA

Accountability

Effective accountability during incident operations is essential. As part of the Incident Command System (ICS) structure, you will need to abide by agency policies and guidelines and any applicable local, tribal, state, or Federal rules and regulations.

There are several principles you will need to adhere to:

- **Check-in/Check-Out.** All responders must report in to receive an assignment. Checking out is just as critical as checking in.
- **Incident Action Planning.** Response operations must be coordinated as outlined in the Incident Action Plan.
- **Unity of Command.** Each individual will be assigned to only one supervisor.
- **Personal Responsibility.** ICS relies on each individual taking personal accountability for his or her own actions.
- **Span of Control.** Supervisors must be able to adequately supervise and control their subordinates, as well as communicate with and manage all resources under their supervision.
- **Resource Tracking.** Supervisors must record and report resource status changes as they occur. Accountability starts as soon as a resource is requested through the time that the resource returns to their home base safely.



FEMA

Dispatch/Deployment

Resources should be deployed only when requested or when dispatched by an appropriate authority through established resource management systems.

Resources not requested should refrain from self-dispatching to avoid overburdening the incident command.



FEMA

34

Information and Intelligence Management

Information and intelligence are important in the Incident Command System (ICS).

Incident management must establish a process for gathering, analyzing, assessing, sharing, and managing incident-related information and intelligence. In NIMS, "intelligence" refers exclusively to threat-related information developed by law enforcement, medical surveillance, and other investigative organizations.



FEMA

35

Unit 2 Summary

You have completed the National Incident Management System (NIMS) Management Characteristics unit.

This unit introduced:

- Common Terminology
- Modular Organization
- Management by Objectives
- Incident Action Planning
- Manageable Span of Control
- Incident Facilities and Locations
- Comprehensive Resource Management
- Integrated Communications
- Establishment and Transfer of Command
- Unified Command
- Chain of Command and Unity of Command
- Accountability
- Dispatch/Deployment
- Information and Intelligence Management



FEMA

36

Unit 3 Overview

This unit introduces you to the Incident Command System (ICS) Functional Areas and roles of the Incident Commander and Command Staff. By the end of this unit, you should be able to:

- Identify the five major ICS functional areas.
- Describe the role of the Incident Commander.
- Describe the selection of and transfer of command between Incident Commanders.
- Identify the position titles associated with the Command Staff.
- Describe the roles of the Command Staff.
- Differentiate between incident command and incident coordination.



FEMA

ICS Functional Areas and Command Staff Roles

Every incident requires that certain functional areas be implemented. The problem must be identified and assessed, a plan to deal with it must be developed and implemented, and the necessary resources must be procured and paid for.

Regardless of the size of the incident, these functional areas are all required.

In case you ever need to assist with an incident, you should understand how the management structure is constructed using the Incident Command System (ICS). This will help you understand your role in the structure and how you may receive information and assignments.



This unit focuses on the five major functional areas and the Command Staff roles. The General Staff roles will be discussed in the next unit.



FEMA

Five Major ICS Functional Areas

There are five major Incident Command System (ICS) functional areas that are the foundation on which an incident management organization develops.

These functions apply to incidents of all sizes and types, including both planned events and ones that occur without warning.

If you are in an incident and hear these terms, its important for you to know what they mean. For instance, you may be directed to provide documents to the Planning Section or receipts to the Finance/Administration Section.

- Command
- Operations
- Planning
- Logistics
- Finance/Administration



FEMA

ICS Functional Area Descriptions

Incident Command: Sets the incident objectives, strategies, and priorities, and has overall responsibility for the incident.

Operations: Conducts operations to reach the incident objectives. Establishes tactics and directs all operational resources.

Planning: Supports the incident action planning process by tracking resources, collecting/analyzing information, and maintaining documentation.

Logistics: Arranges for resources and needed services to support achievement of the incident objectives (resources can include personnel, equipment, teams, supplies, and facilities).

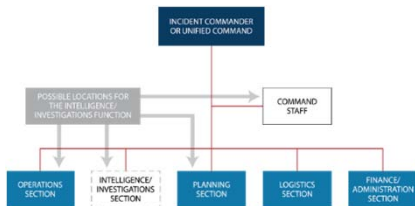
Finance/Administration: Monitors costs related to the incident. Provides accounting, procurement, time recording, and cost analyses.



FEMA

40

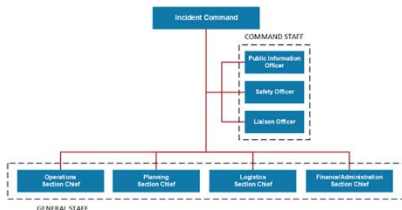
Intelligence/Investigations Function in ICS



FEMA

41

ICS Structure



FEMA

42

Incident Command Definition

The National Incident Management System (NIMS) defines **command** as the act of directing, ordering, or controlling by virtue of explicit statutory, regulatory, or delegated authority.

When you are using the Incident Command System (ICS) to manage an incident, an **Incident Commander** is assigned. The Incident Commander has the authority to establish objectives, make assignments, and order resources. To achieve these ends, the Incident Commander works closely with staff and technical experts to analyze the situation and consider alternative strategies.

The Incident Commander should have the training, experience, and expertise to serve in this capacity. Qualifications to serve as an Incident Commander should not be based solely on rank, grade, or technical knowledge.



Incident Commander

Lets begin by taking a closer look at the Incident Commander. The Incident Commander is responsible for the overall management of the incident. Overall management includes Command Staff assignments required to support the incident command function. **The Incident Commander is the only position that is always staffed in ICS applications.** On small incidents and events, one person-the Incident Commander-may accomplish all management functions.



Incident Commander Responsibilities

In addition to having the overall responsibility for managing the entire incident, the Incident Commander is specifically responsible for:

- Ensuring overall incident safety
- Providing information services to internal and external stakeholders, such as disaster survivors, agency executives, and senior officials
- Establishing and maintaining liaisons with other agencies participating in the incident



The Incident Commander may appoint one or more Deputies. If a Deputy is assigned, he or she should be fully qualified to assume the Incident Commanders position.



Selecting or Changing Incident Commanders

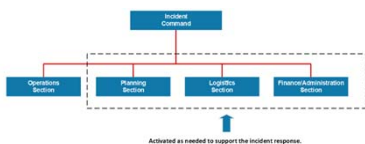
The command function should be clearly established at the beginning of an incident. The jurisdiction or organization with primary responsibility for an incident designates the individual at the scene who is responsible for establishing command and the protocol for transferring command. As an incident becomes more or less complex, command may change to meet the needs of the incident.



When command is transferred, the process should include a briefing that captures all essential information for continuing safe and effective operations.



Delegating Incident Management Responsibilities



The Incident Commander only creates those sections that are needed. If a section is not staffed, the Incident Commander will manage those functions.



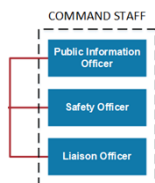
ICS Command Staff

Depending upon the size and type of incident or event, the Incident Commander may designate personnel to provide information, safety, and liaison services. In the Incident Command System (ICS), the Command Staff may include:


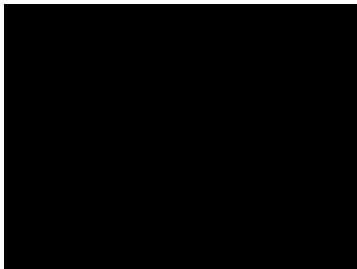
- **Public Information Officer**, who interfaces with the public and media and/or with other agencies with incident-related information requirements.
- **Safety Officer**, who monitors incident operations and advises the Incident Commander on all matters relating to safety, including the health and safety of incident management personnel.
- **Liaison Officer**, who serves as the Incident Commanders point of contact for representatives of governmental agencies, non-governmental organizations (NGOs), and private-sector organizations.

Incident Commanders may also choose to appoint technical specialists (such as legal, medical, science and technology, or access and functional needs) to act as command advisers.

The Command Staff reports directly to the Incident Commander. In a complex incident, Assistant Officers may be assigned to each of the Command Staff functions.



Command Staff Overview - Video



FEMA



49

Incident Coordination

Now that we've discussed the Command Staff roles, let's take a look at how the overall incident is coordinated.

Coordination involves the activities that ensure the onsite Incident Command System (ICS) organization receives the information, resources, and support needed to achieve those incident objectives. Coordination takes place in a number of entities and at all levels of government. Examples of coordination activities include:

- Establishing policy based on interactions with agency executives, other agencies, and stakeholders.
- Collecting, analyzing, and disseminating information to support the establishment of shared situational awareness.
- Establishing priorities among incidents.
- Resolving critical resource issues.
- Facilitating logistics support and resource tracking.
- Synchronizing public information messages to ensure that everyone is speaking with one voice.



FEMA



50

Command and Coordination

Effective incident management consists of four overarching areas of responsibility:

1. Direct tactical response to save lives, stabilize the incident, and protect property and the environment
2. Incident support through resource acquisition, information gathering, and interagency coordination
3. Policy guidance and senior level decision making
4. Outreach and communication with the media and public to keep them informed about the incident

These objectives are accomplished through the use of the Incident Command System (ICS), Emergency Operations Centers (EOCs), Multi-agency Coordination (MAC) Groups, and the Joint Information System (JIS), respectively.



FEMA

51

Emergency Operations Center Role

Jurisdictions and organizations across the Nation use Emergency Operations Centers (EOCs) as an element of their emergency management programs.

Typically, an Emergency Operations Center (EOC) supports the on-scene response by relieving the Incident Commander of the burden of external coordination and the responsibility for securing additional resources.

An EOC is:

- A physical or virtual location where staff from multiple agencies come together to address imminent threats and hazards
- Staffed with personnel trained for, and authorized to, represent their agency/discipline
- Equipped with mechanisms for communicating with the incident site
- Providing support to the incident by obtaining resources
- Applicable at different levels of government



FEMA

Joint Information Center

Another coordination entity is the Joint Information Center (JIC). The JIC:

- May be established to coordinate all incident-related public information activities
- Serves as the central point of contact for all news media-when possible, public information officials from all participating agencies should co-locate at the JIC

JICs may be established at various levels of government and at incident sites. Depending on your role in the incident, you may need to direct individuals or organizations to the JIC to obtain information.



FEMA

Unit 3 Summary

This unit introduced you to the:

- Five major Incident Command System (ICS) Functional Areas.
- ICS organizational structure.
- Incident Commander roles and responsibilities.
- Selection and transfer of Incident Commanders.
- Command Staff roles and responsibilities.
- Differences between incident command and incident coordination.

The next unit provides an introduction to the ICS General Staff Roles.



FEMA

Lesson 4 Overview

In the previous unit, you learned that the Command Staff supports the Incident Commander who is responsible for overall management of the incident.

This unit introduces you to the General Staff.

By the end of this unit, you should be able to:

- Identify the Incident Command System (ICS) titles used for General Staff members.
- Describe the major activities of the four general staff sections.



FEMA

55

General Staff

To maintain span of control, the Incident Commander may establish any or all of the following four sections: Operations, Planning, Logistics, and Finance/Administration.

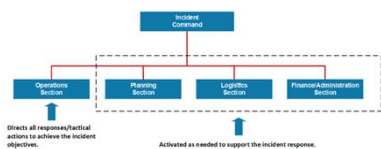


FEMA

56

General Staff Overview

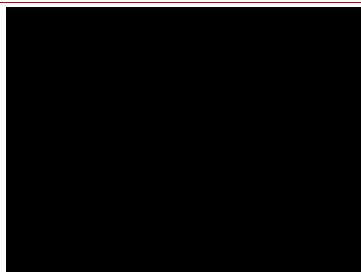
In an expanding incident, the Incident Commander first establishes the Operations Section. The remaining sections are established as needed to support the operation.



FEMA

57

General Staff Overview Video



FEMA

58

Operations Section

The Incident Commander determines whether there is a need for an Operations Section and, if so, will designate an Operations Section Chief.

It is up to the Operations Section Chief to activate any additional staffing that is needed. When the Operations Section Chief is designated, the staging and management of operational resources moves from the Incident Command to Operations.

If no Operations Section is established, the Incident Commander will perform all operations functions.



Operations Section Chief



FEMA

59

Operations Section Major Activities

The major activities of the Operations Section may include:

- Implementing strategies and developing tactics to carry out the incident objectives
- Directing the management of all tactical activities on behalf of the Incident Commander
- Supporting the development of the Incident Action Plan to ensure it accurately reflects current operations
- Organizing, assigning, and supervising the tactical response resources



FEMA

60

Planning Section

The Planning Section Chief is designated only after the Incident Commander determines whether there is a need for a Planning Section.

It is up to the Planning Section Chief to activate any additional staffing that is needed.

The Incident Commander will perform all planning functions if no Planning Section is established.



Planning Section Chief



FEMA

Planning Section: Major Activities

The major activities of the Planning Section may include:

- Preparing and documenting Incident Action Plans
- Managing information and maintaining situational awareness for the incident
- Tracking resources assigned to the incident
- Maintaining incident documentation
- Developing plans for demobilization



FEMA

Logistics Section

The Logistics Section Chief is designated only after the Incident Commander determines whether there is a need for a Logistics Section.

It is up to the Logistics Section Chief to activate any additional staffing that is needed.

The Incident Commander will perform all logistics functions if no Logistics Section is established.



Logistics Section Chief

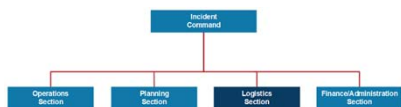


FEMA

Logistics Section: Major Activities

The Logistics Section is responsible for all services and support needs, including:

- Ordering, obtaining, maintaining, and accounting for essential personnel, equipment, and supplies
- Providing communication planning and resources
- Setting up food services for responders
- Setting up and maintaining incident facilities
- Providing support transportation
- Providing medical services to incident personnel



FEMA

64

Finance/Administration Section

The Incident Commander determines whether there is a need for a Finance/Administration Section at the incident.

If so, the Incident Commander will designate an individual to fill the position of the Finance/Administration Section Chief.



The Time, Compensation/Claims, Cost, and Procurement Units may be established within this section.



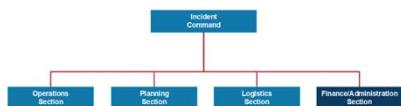
FEMA

65

Finance/Administration Section: Major Activities

The Finance/Administration Section is set up for any incident that requires incident-specific financial management. The Finance/Administration Section is responsible for:

- Contract negotiation and monitoring
- Timekeeping
- Cost analysis
- Compensation for injury or damage to property
- Documentation for reimbursement (e.g., under mutual aid agreements and assistance agreements)



FEMA

66

Unit 4 Summary

This unit introduced you to:

- The Incident Command System (ICS) roles of the General Staff.
- The major activities of the four ICS General Staff sections.

The next unit focuses on how the ICS applies to you and your agency or organization.



Course Summary

You have now completed this course.

You should now be able to:

- Explain the principles and basic structure of the Incident Command System (ICS).
- Describe the NIMS Management Characteristics that are the foundation of ICS.
- Describe the ICS functional areas and the roles of the Incident Commander and Command Staff.
- Describe the General Staff roles within ICS.
- Identify how NIMS management characteristics apply to ICS for a variety of roles and discipline areas.



IS-100.c Final Exam Instructions

When the review is completed, follow these Final Exam instructions:

1. Take a few moments to review your Student Manual and identify any questions.
2. Make sure that you get all of your questions answered prior to beginning the final test.
3. When taking the test online
 - Go to <http://training.fema.gov/IS/crslist.asp> and click on the link for IS-0100.c.
 - Click on "Take Final Exam."
 - Read each item carefully.
 - Check your work before submitting your answers.

To receive a FEMA certificate of completion, you must take the multiple-choice Final Exam and score at least 75 percent on the test.

Upon successful completion of the Final Exam, you will receive an e-mail message with a link to your electronic certification.



Regional Training Centers






Finger Lakes Regional Training Center
 Anne D'Angelo
 Phone: (585) 758-7640
anne_dangelo@urmc.rochester.edu
 Website: wrhepc.urmc.edu

CNY Regional Training Center
 Kelsey Wagner
 Phone: (315)464-7597 Ext: 4-7597
WagneKel@upstate.edu
 Website: <http://www.upstate.edu/cnyrtc>


CDR Regional Training Center
 Jeneffe White
 Phone: (518) 262-1070
whitejd@amc.edu

MARO Regional Training Center
 Connie Kraft Phone: (631) 444-9074
Connie.Cincotta-Kraft@stonybrookmedicine.edu
 Website: <https://www.stonybrookmedicine.edu/MARORTC>


FEMA

POST WEBINAR REMINDERS

- **ATTENDANCE**
 Group Sign-In Sheet should be emailed to Eileen_Spezio@urmc.Rochester.edu or faxed to (585) 756-5098 by COB today. If you don't utilize the RTC sign-in sheet template, you must include course name, facility name, date and time on your facility Sign-In Sheet.
- **LMS CERTIFICATE**
 If you want to receive a NYSDOH LMS generated course certificate please make sure you have registered for the session in LMS and have **completed an evaluation**.
- **FEMA EXAM/CERTIFICATION**
 At the conclusion of this webinar please log onto the FEMA website to complete the **FINAL EXAM**. FEMA has implemented the use of a Student Identification (SID) number. You will be required to obtain and use the SID to take the exam. If you do not yet have a SID follow the steps at this link to register for one: <https://training.fema.gov/apply/notice.aspx>


FEMA


REMAINING ICS WEBINARS

<https://www.nylearnsph.com>

ICS 200
 January 22, 2020 @ 10am
 RTC-ICS200-WEBINAR-BP1

HICS
 February 05, 2020 @ 10am
 RTC-HICS-WEBINAR-BP1

ICS RECORDED SESSIONS
<https://www.nylearnsph.com>
 RTC-IS700-Rec
 RTC-IS100-Rec
 RTC-IS200-Rec
 RTC-HICS-Rec


FEMA
