

NEW YORK STATE Department of Health

Mass Fatality Resources and Incidents

Vince Fargione

April 28th, 2026

1

Introduction and Objectives

NEW YORK STATE Department of Health

2

Objectives

- Define and discuss Mass Casualty vs. Mass Fatality Incidents
- Review Available State Resources
- Discuss Real Incidents State Resources were requested for
- Next Steps

NEW YORK STATE Department of Health

3



Definitions



4

Definitions- Mass Casualty Incident (MCI)


- An incident in which emergency services resources are overwhelmed by the number and severity of casualties

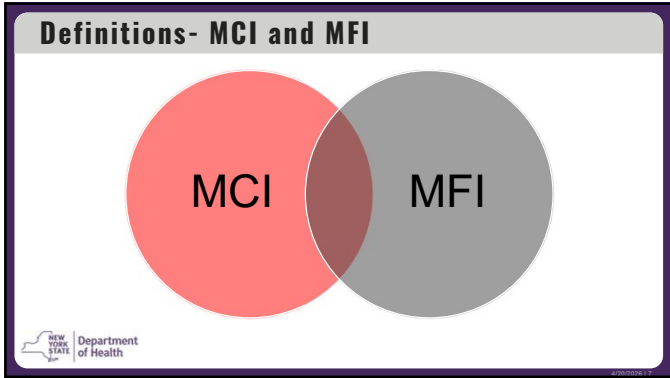
5

Definitions- Mass Fatality Incident (MFI)

- An incident involving more dead bodies and/or body parts that can be located, identified, and processed for final disposition by available response resources
- While there is no widely accepted number of fatalities that define an MFI, typically it is recognized when the number of fatalities exceeds the local resource capabilities



6



7

Resources

8



9

Portable Operations Shelter

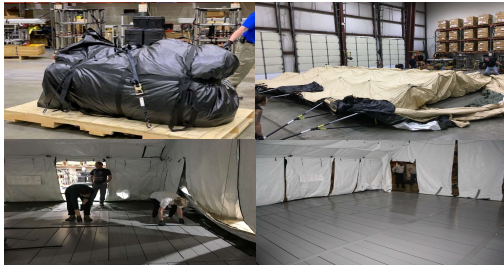
- Deployable, self-articulating shelter (25' x 26' x 14') primarily used by the US Military
- Ancillary shelter (9' x 15') that directly connects to main shelter
- Industrial heater (MTH150) for cold weather operations
- Hard surface flooring and interior lighting
- Portable generator (10Kw)
- Main shelter has a specialized end wall that allows for commercial trailers to connect/boot to the shelter to minimize outside visualization and protect against inclement weather or temperatures



© 2020/04/19

10

Portable Operations Shelter Set Up



© 2020/04/19

11

Refrigerated Trailers and Mortuary Racking



© 2020/04/19

12

Refrigerated Trailers and Mortuary Racking

- Two (2) – 48’ refrigerated trailers with heavy-duty lift gates
- Collapsible mortuary racking, 3-tier high, 18 units total (total capacity of 54 remains)
- 54 backboards for mortuary racking
- Four (4) reinforced (steel) tables for examination and processing
- Upon request, human remains pouches (body bags) are available through the standard request process (county emergency management)



13

Operational Use and Considerations

- Regular request process for all resources (County OEM to State OEM) must be followed
- Specify mission- including on-scene operational periods
- Resources may be requested independently of each other (MFI Trailer and racking separate from the Shelter, or requested together)
- Drive times are estimated based on location of scene, traffic, weather and other factors
- Additional time must be allocated for the driver and transport truck to arrive and hook up trailer



14

Operational Use and Considerations


- Designed to conduct initial mortuary operations (identification, processing for transport to a facility, processing of personal effects) while sheltering coroners, medical examiners, law enforcement and other staff from the elements and providing seclusion from the media and on-lookers
- Preferred setup location is a hardened surface, 50’ x 50’ wide, such as a parking lot
- Intended for large-scale incidents that cannot be effectively responded to through local or regional efforts



15

Operational Use and Considerations

- NYSDOH will likely send two (2) staff, if available, to assist with setup of the shelter, assembly of the racking, and operation of the lift gate on the trailer
 - Staff may not remain on scene for the duration of the incident, once locals are up to speed
- Set up for the shelter requires a minimum of seven (7) staff taking approximately two (2) hours to be operational
 - Minimum of three (3) staff capable of supporting 50+lbs with arms fully extended



16


Incidents



17

Mass Fatality Resource Deployments


- Schoharie Limo Accident
 - County Resources were overwhelmed
 - Transported remains from scene to Albany Medical Center Morgue
 - Racking was used for overflow storage at Albany Med
- Ellis Hospital
 - Morgue was over capacity multiple times
 - Requested racking and backboards as stand alone resources



18

Mass Fatality Resource Deployments

- Albany Medical Center
 - Morgue space was undergoing a renovation project
 - Provided temporary mortuary storage space
- Erie County
 - Medical Examiner and all hospitals exhausted storage space during winter storm
- Monroe County
 - County Mortuary storage was overwhelmed
 - Provided temporary mortuary storage space



19



20