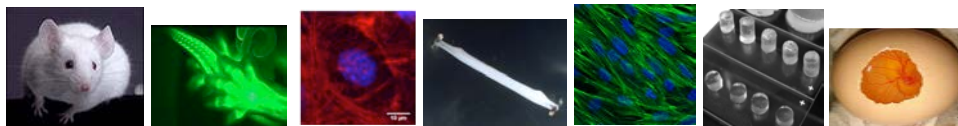


Multiple Postdoctoral Positions Available



Multiple postdoctoral positions are available in the Kuo Lab, which is part of the Department of Biomedical Engineering, Department of Orthopaedics, and the Center for Musculoskeletal Research at the University of the Rochester in NY. Candidates will join a multidisciplinary lab of biomedical engineers, biologists, and surgeons. Expertise in biomedical engineering, biology, or related disciplines is welcome.

Projects in the lab span tissue engineering, regenerative medicine, mechanobiology, stem cell and developmental biology, scaffold development, and wound healing, with focus on tendon, ligament, and tumor metastasis. Candidates may choose from existing projects or work with the PI to propose new directions within the scope of the lab. The lab is funded by NIH, NSF, and DoD grants. NIH T32 Training Grant seats may be available for application as well.

While the lab is multidisciplinary, individual projects may be entirely biological, engineering-based, or integrate both biology and engineering in terms of focus and techniques. Candidates will also receive training in grant / manuscript writing, presenting, and teaching (laboratory and classroom).

Engineering applicants should hold a Ph.D. in biomedical engineering, materials science and engineering, chemical engineering, mechanical engineering, or related discipline. *Training in biological techniques is available for outstanding candidates that have minimal biology expertise.*

Biology applicants should hold a Ph.D. in cell biology, developmental biology, or related discipline.

Candidates should be independently motivated, creative, have a desire to learn/develop new techniques and approaches, and have excellent written and oral communication skills. Candidates should have a demonstrated record of publications expected for her/his level of training.

Please email a cover letter (include long-term goals, expertise, research interests), a CV, and names and contact information of at least 3 references to Catherine.K.Kuo@rochester.edu. **Please include Postdoctoral Application in the subject line.** Positions are open immediately and will remain open until filled.

Catherine K. Kuo, Ph.D., Associate Professor
Department of Biomedical Engineering
Department of Orthopaedics
Center for Musculoskeletal Research
University of Rochester, Rochester, NY 14627
Email: Catherine.K.Kuo@rochester.edu
Website: http://www.bme.rochester.edu/people/faculty/kuo_catherine/index.html