

IQ-LUPUS project

Patient-centered care

Allen Anandarajah, MD, MS



SLE: A complex medical disease



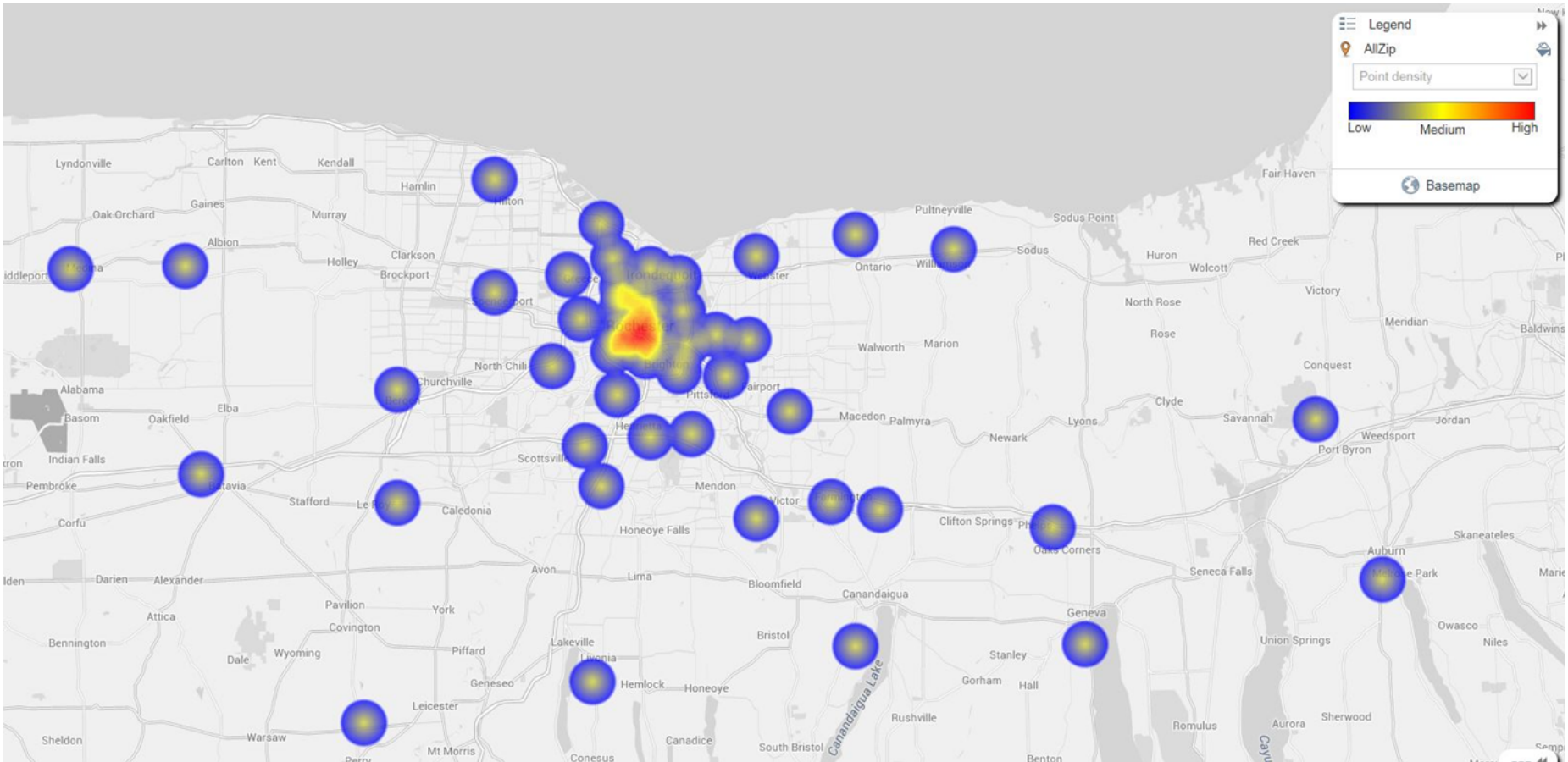
- SLE is a chronic, systemic autoimmune disease with a remitting and relapsing course that can affect multiple organ systems.
- Afflicts minorities more than Caucasians
- Afflicts young women
- Morbidity and mortality higher among African Americans

SLE: Frequent cause for hospitalizations



- Is a frequent cause for admissions
- Is the 6th most common reason for 30 day readmissions in the US

ZIP code analysis of all hospitalized confirmed SLE patients for FY14 and FY15

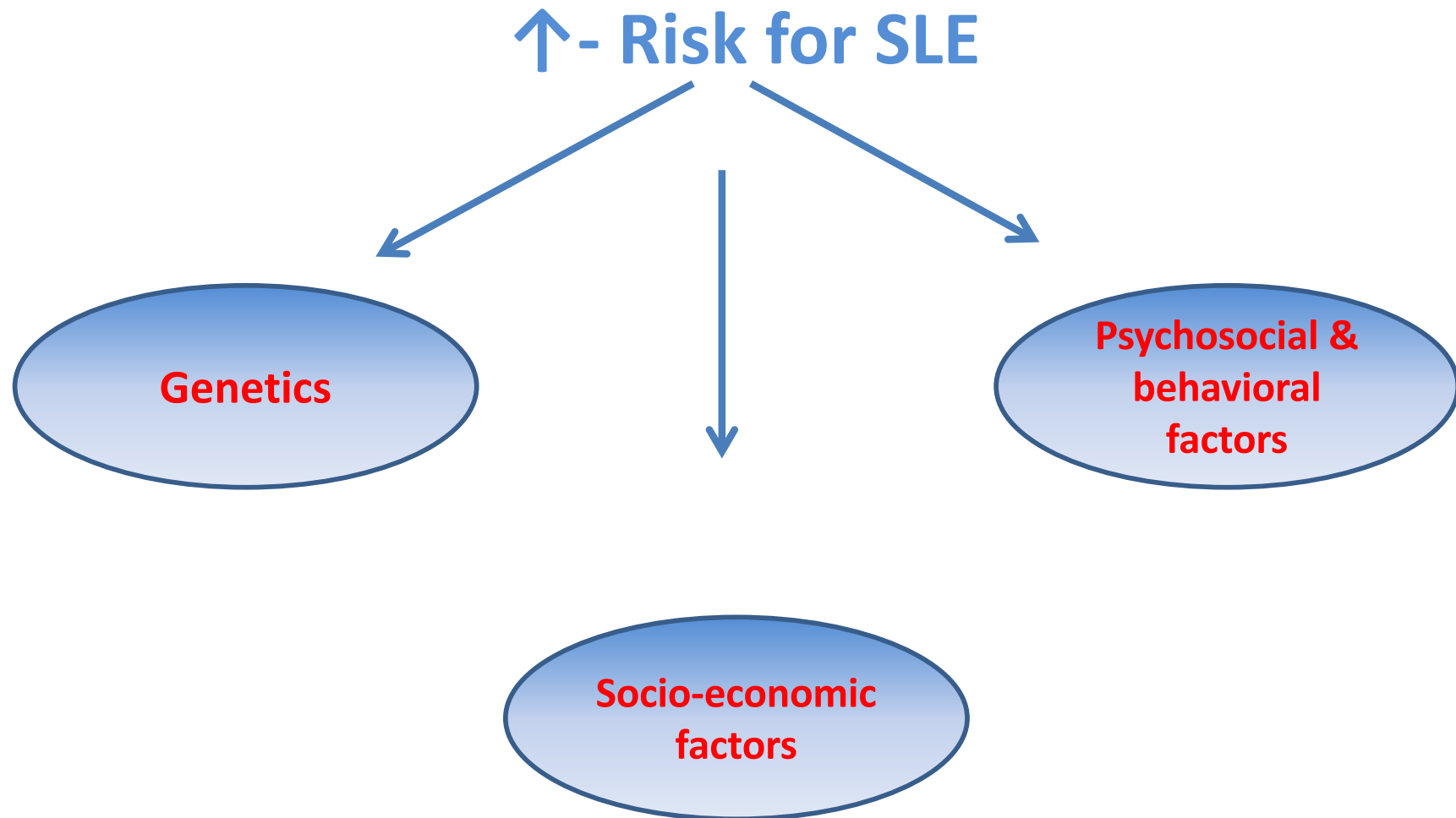


Why ?



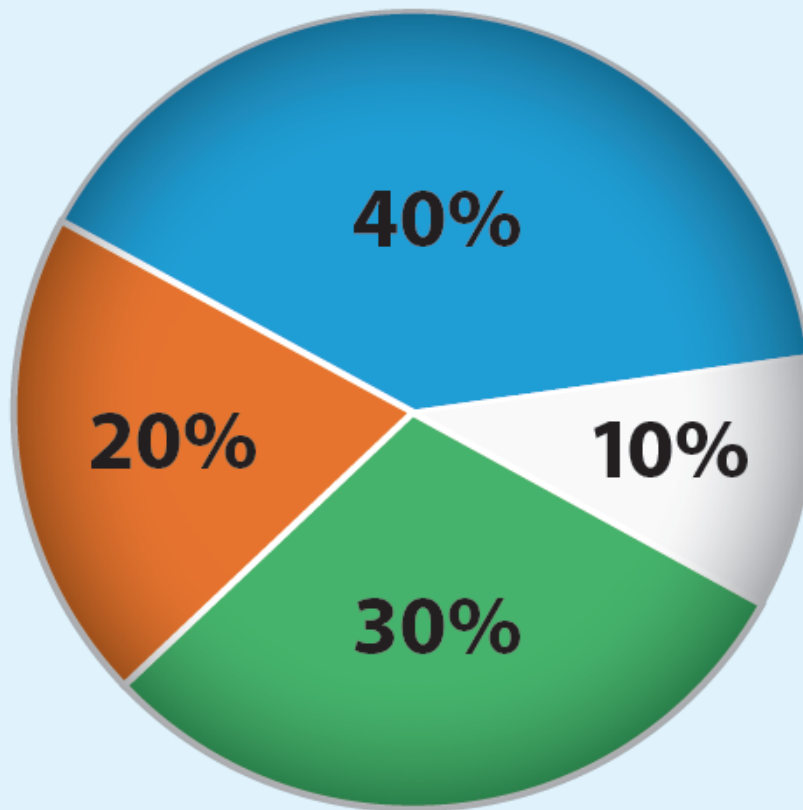
- One of the best Hospitals
- High quality rheumatologists
- State of the art research

SLE: Higher disease activity, morbidity and mortality among minorities



Know What Affects Health

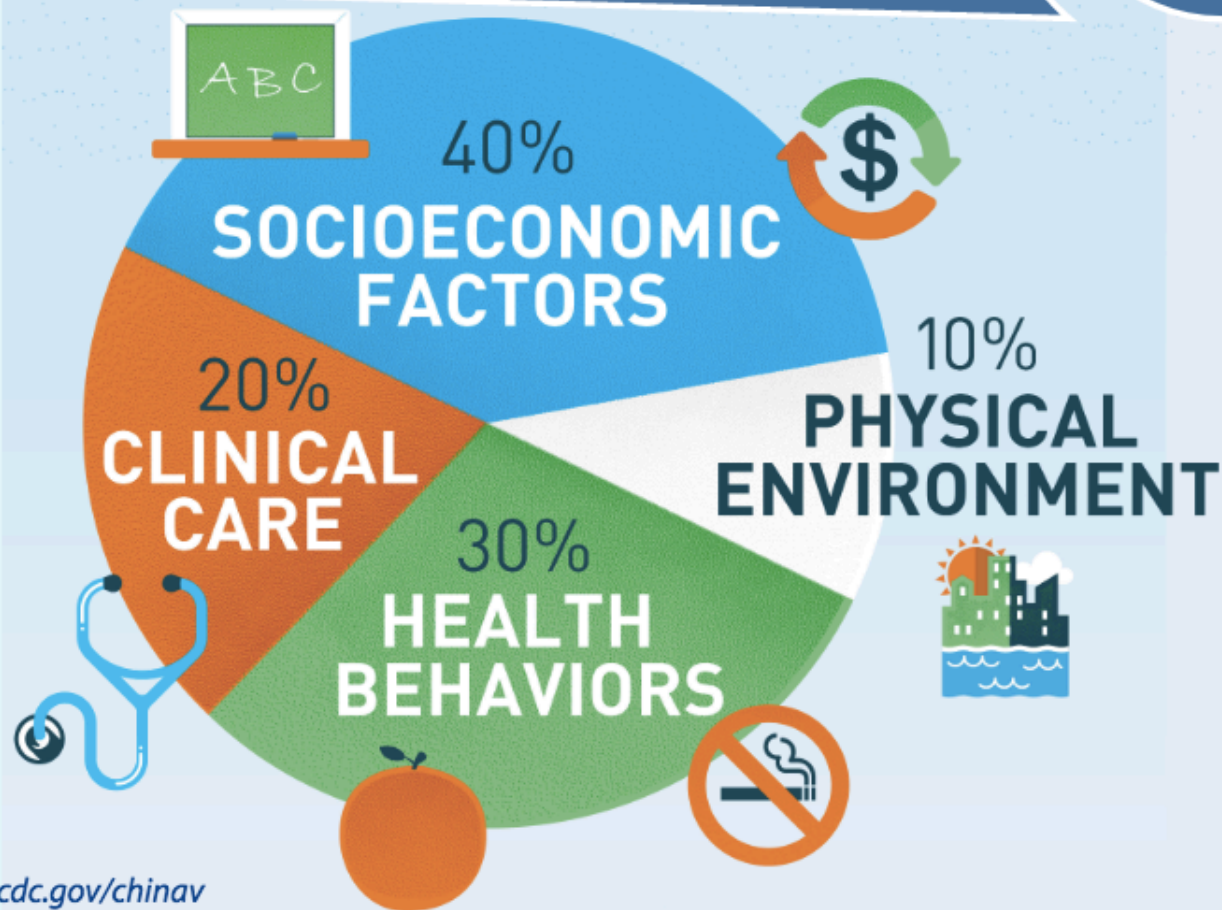
More information on reverse side



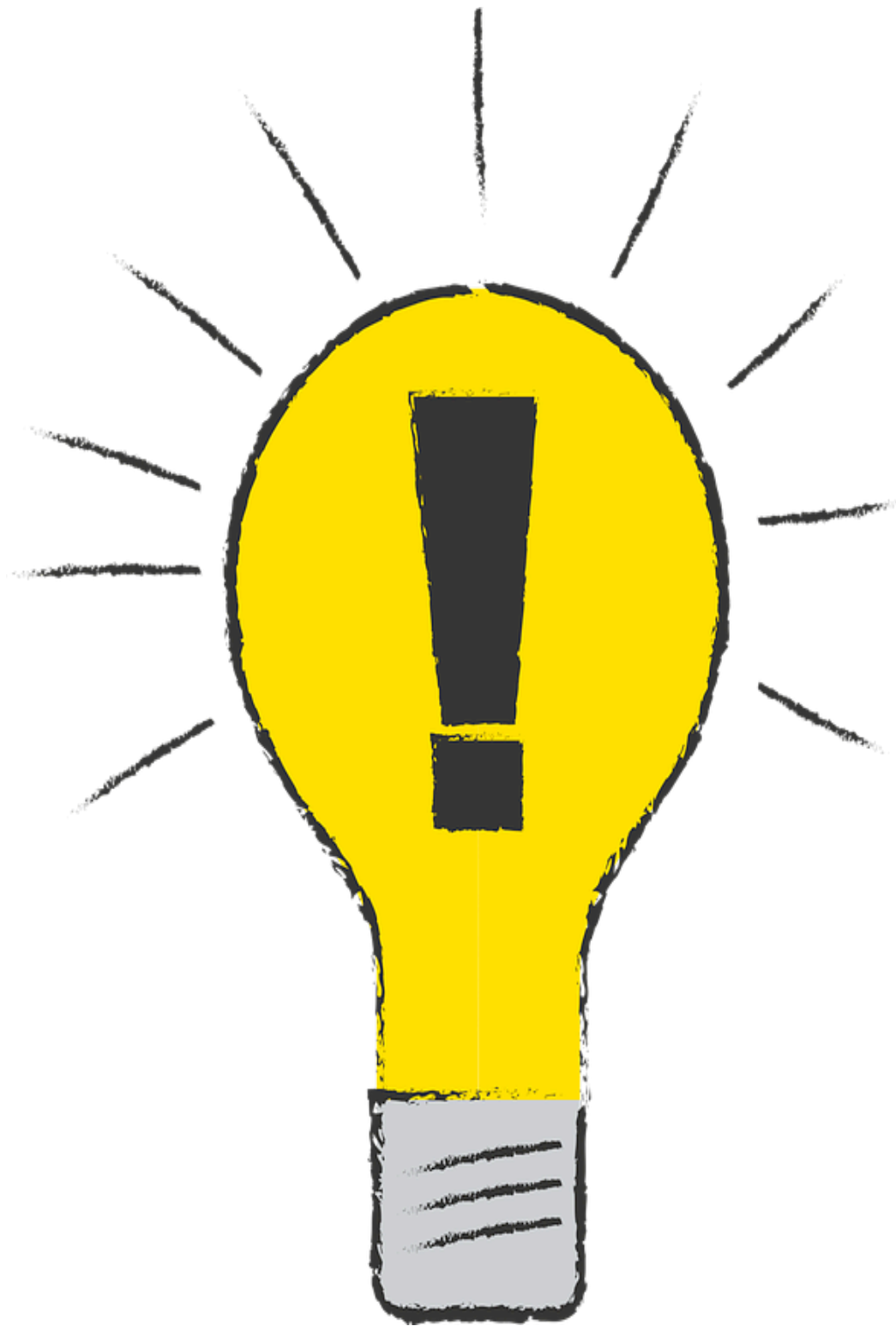
**Match these factors
to their impact level:**

- Physical environment
- Clinical care
- Socioeconomic factors
- Health behaviors

Know What Affects Health

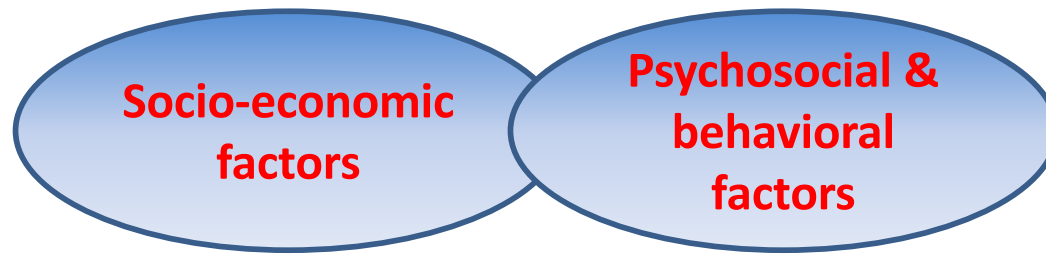


Source: www.cdc.gov/chinav



Focus group meeting

- We LOVE our rheumatologists
- Inability to get in touch with rheumatologist
- “PCPs/other specialists don’t understand SLE”
- “ER physicians do not understand SLE”
- “We do not understand SLE”
- Medications – “simpler would be better”



- Easy access to Medical care
- Educational activity
- Social services
- Co-ordinated care
- Wellness/ Exercise programs
- Social support
- Nutritional advice
- Behavioral health
- Prevention for Smoking, alcohol, drug use

IQ-LUPUS

1. Enhance access to and continuity of care
2. Identify and modify behavioral and social impediments to regular medical care
3. Develop a commitment to place patients at the center of their care, by supporting, educating, and empowering patients to become partners in their care.

Grant support



African American Health Coalition



IQ-LUPUS team

- Physicians: Dr. Anolik
Dr. Anandarajah
Dr. Shah
- Nurse coordinator: Jenny Ganz
- Care coordinator: Kelly Callahan

Patient Peer Program

PAL care (Peer Assisted Lupus care)

- 3 patient peers - LZ, VP, CP
- “Model” SLE patients will relay concerns about SLE care of fellow patients to providers



- Peers will educate patients on disease process and medication use

Make it easier to access Rheumatology care

- Clinics – twice a month at AJHC
- Coordinated care at Lattimore

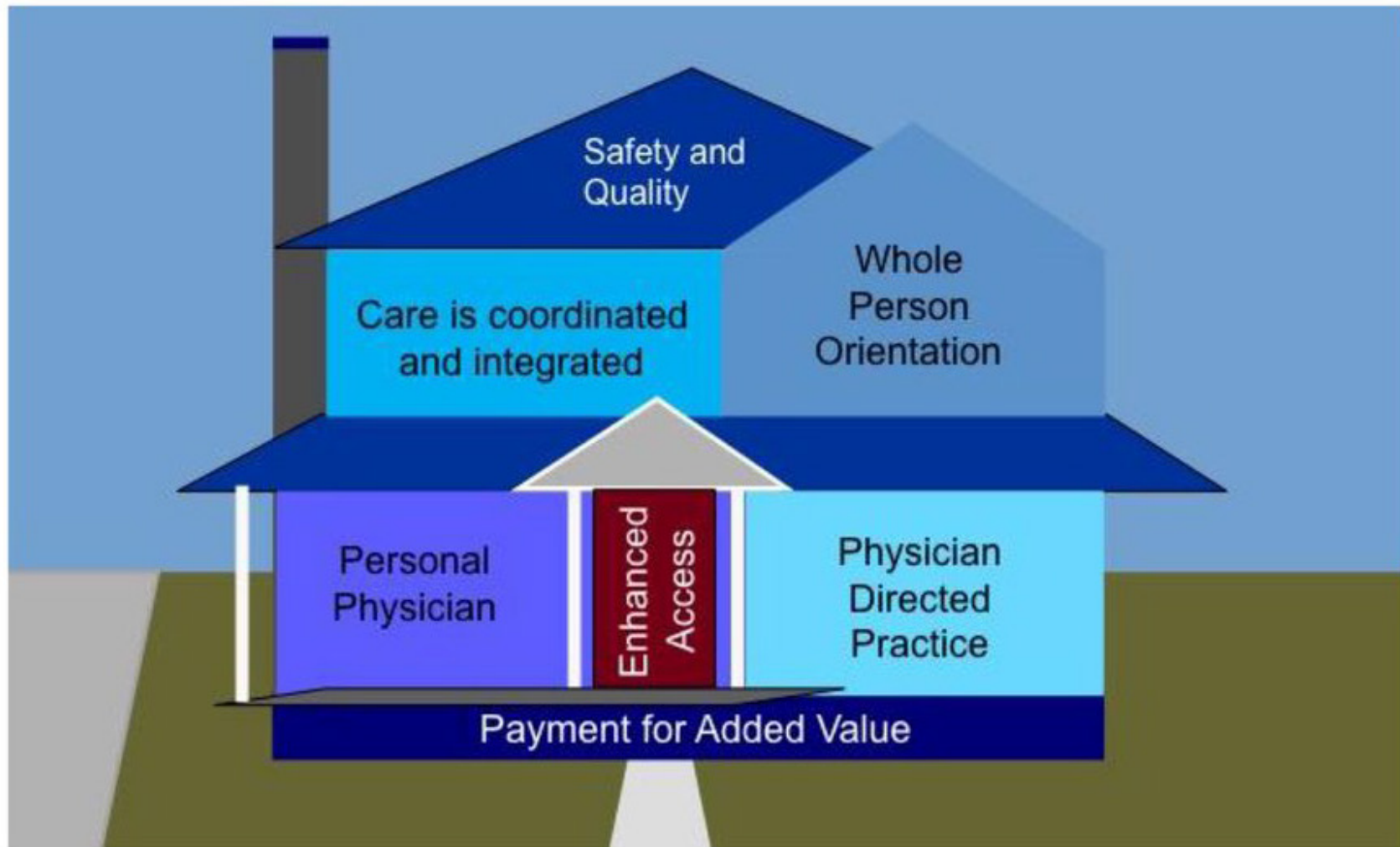


Educating patients and providers

S²L³E⁴

- Educational sessions for patients: 6 over 2 years
- CME programs for providers: 2 over 2 years
- Change Social issues and Society roles
- Learning to Live with Lupus and
- Education to Encourage, Embrace, Empower

High quality coordinated care



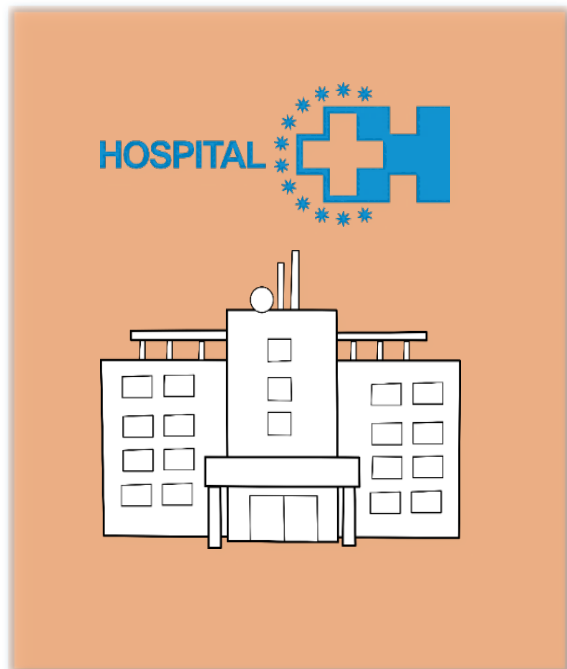
Future steps



Social support



Make a difference



?!?



We are listening !!!

COMMUNICATION

MAKE SURE
YOU LISTEN

AS MUCH AS
YOU TALK



IS A
**TWO-WAY
STREET**



Release the butterfly



Acknowledgements

- Christine Pawuk
- Christopher Ritchlin
- Eddie Schwarz
- Adam Anolik
- Amanda Ostronic
- Kate French
- Sharon Legette-Sobers
- Lucas Candice
- Frederick Jefferson
- Ann Russ
- Laurie Donohue
- Steve Fine