

# Anemia, Exertional Dyspnea, and Petechial Rash in a Healthy 62-year-old

**Alexandra M Bender<sup>1,2</sup>, Kunal Gurditta<sup>1</sup>, Elizabeth H. Cusick<sup>2</sup>, Kathleen Mannava<sup>2</sup>, Thomas Walters<sup>3</sup>, Molly E. Plovanich<sup>2</sup>, Meghan K. Train<sup>1</sup>**

<sup>1</sup>Department of Medicine, University of Rochester School of Medicine; <sup>2</sup>Department of Dermatology, University of Rochester School of Medicine;

<sup>3</sup>Department of Family Medicine, University of Rochester School of Medicine

MEDICINE *of* THE HIGHEST ORDER



# History

- 62M h/o HTN, HLD, tobacco use, CVA, remote EtOH
- CC: lightheadedness and increased bruising
- ROS: exertional dyspnea, left-sided extremity swelling, hematuria %
- Chart review: seen by hematology over past year for episodes of % anemia. Outpatient bone marrow biopsy and G6PD negative. %

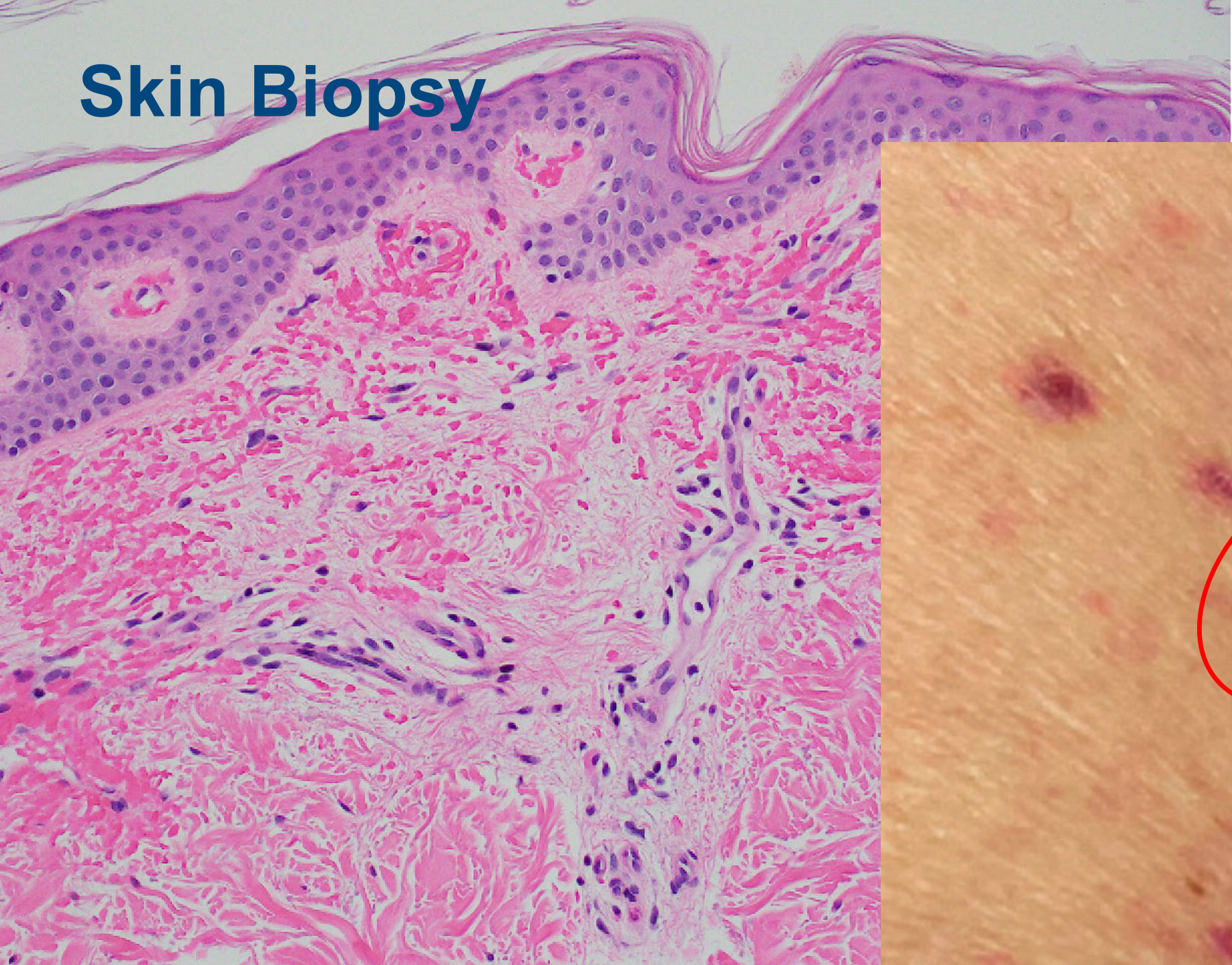
# Physical Exam



# Initial Workup

- H/H on presentation 11.2/33 MCV 102 \$  
→ 7.9/24 on HD4
- Plt 229 \$
- tBili 2.1, iBili 1.3
- CRP 79 ESR 52 \$

# Skin Biopsy



# Treatment

Scurvy: 1000mg vitamin C daily for 1-2 weeks, followed by 400mg daily until complete recovery





MEDICINE *of* THE HIGHEST ORDER