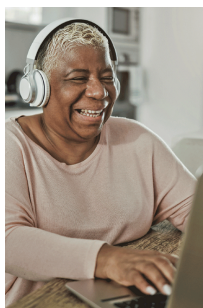


Lifespan Gerontology Certificate Program

in partnership with the Finger Lakes Geriatric Education Center
(FLGEC) at the University of Rochester



Join us online starting **Wednesday, September 14!**

This 32-class non-credit course is designed to foster intergenerational connection and deepen understanding of a wide range of age-related topics for professionals, older adults, care partners, and volunteers.

Wednesdays, 4:00 - 6:30 pm EST via Zoom.

COURSE OVERVIEW

Classes are organized into 8 units by topic in two semesters on Wednesdays, starting September 14, and ending May 24, 2023.


- **Unit 1:** Introduction to Gerontology
- **Unit 2:** Bio-Medical Aspects of Aging
- **Unit 3:** Environmental Gerontology
- **Unit 4:** Law, Policy, & Research
- **Unit 5:** Equity & Justice in Aging
- **Unit 6:** Palliative & Hospice Care
- **Unit 7:** Psycho-Social Gerontology
- **Unit 8:** Community-Based Care & Support

Take the whole course or unit(s) of interest. To receive the certificate, regular attendance and active participation is required. CE contact hours available for licensed social workers.*

Target audience: Anyone interested furthering a career or gaining knowledge about longevity and aging. Special rates for retirees 65+, family caregivers, and Lifespan volunteers.



*Lifespan of Greater Rochester is recognized by the New York State Education Department's State Board for Social Work as an approved provider of continuing education for licensed social workers # SW-0089.

 ASL interpretation services scheduled for the full course year. Live Zoom captioning provided.

| PRICING | Early bird deadline is August 5! | Pay in full | Pay by semester (pay at the beginning of each semester) |
|---|---|--------------------|---|
| Standard rate | | \$1,199 | \$599.50 |
| Early bird rate | | \$999 | \$499.50 |
| Lifespan volunteer rate | | \$599 | \$299.50 |
| Lifespan volunteer early bird rate | | \$499 | \$249.50 |
| Family caregiver and 65+ retiree standard rate | | \$699 | \$349.50 |
| Family caregiver and 65+ retiree early bird rate | | \$599 | \$299.50 |
| Pay by unit: Unit prices vary by number of classes in unit (\$40 per class). | | | |

Register and learn more:

Please visit <https://www.lifespanrochester.org/gerontology-certificate-program> or contact Mara Kouides at 585-498-4022 or gerontology@lifespanrochester.org.

