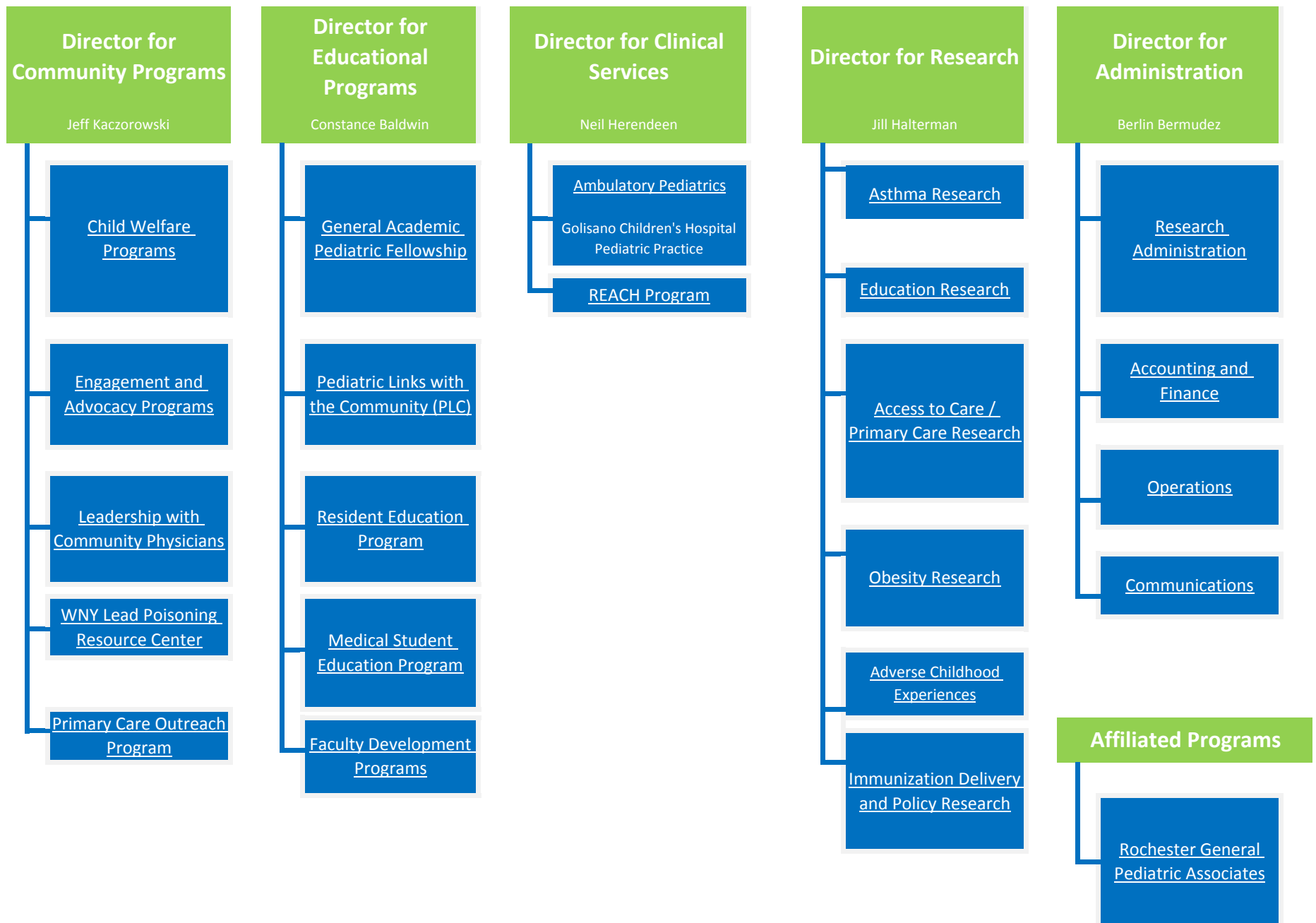


## Division Chief

Dr. Jill Halterman



**Director for Community Programs**

Kaczorowski

**Child Welfare Programs**

Jee, Conn

*REACH*—Lenane, Salisbury,  
Murray

**Engagement and Advocacy Programs**

*PLC*—Kaczorowski, Aligne,  
Tipton, Jenks, Lloyd

*Children's Agenda*—  
Kaczoroski

**Leadership with Community & National Organizations**

*GR-PBRN*—S Schaffer

*AAP*—Kaczorowski

**WNY Lead Poisoning Resource Center – Rochester Office**

Schaffer, Becker

**Primary Care Outreach Program**

P Szilagyi, Rand, Gallivan

**Director for Educational Programs**

Baldwin

**AGP Fellowship**

Baldwin, Rand,  
Frey( Fellow), Gregory  
(Fellow)  
Jones (Fellow), Rosen-Carole  
(Fellow)

**PLC**

Kaczorowski, Aligne  
Tipton, Jenks, Lloyd

**Resident Education**

Baldwin, Brown, Jee

**Medical Student Education**

*Pediatric Interest Group*—Jee

**Faculty Development Programs**

*CTSI*—Baldwin

**Director for Clinical Services**

Herendeen

**GCH Pediatric Practice  
(See GCHPP Org Chart)**

Herendeen  
Walters (Admin)  
Maness

**REACH Program**

Lenane  
Walters (Admin)  
Salisbury

**Affiliated Programs**

**RGPA**

Denk  
Campbell  
Garfunkel  
Howard

**Director for Research**

Halterman

**Asthma Research**

Halterman (PI)  
Fagnano, Tremblay  
Blaakman, Tajon  
Holderness, Gillett, Goldman,  
Conn, DePerrior, Collins, Hoey,  
Abel, Blauvelt, Welch, D'Arcy,  
Belles, Frey (Fellow)

**Educational Research**

Baldwin, Garfunkel  
Kaczorowski, Nazarian

**Access to Care/Primary Care**

Campbell, Hoilette, Howard,  
Kaczorowski, Rand, Schaffer (PI),

**Obesity Research**

Cook (PI), DiBitetto

**Adverse Childhood Experiences**

Jee (PI), Conn

**Immunization Delivery & Policy Research**

Rand (PI)  
Schaffer(PI), Eagan  
Vincelli, Silverman

**Director for Administration**

Bermudez

**Research Administration**

*Pre-Award*—Bermudez,  
Gilardoni

*Post-Award*—Bermudez,  
St. Germaine

*Core Research Support*—  
Gilardoni, Bermudez, St.  
Germaine, Klein

**Accounting & Finance**

St. Germaine, Bermudez

**Operations**

Bermudez, Gilardoni, Klein

**Communications**

*Internal:*  
*Newsletter/Website*—  
Gilardoni

*External:*  
*Development/PR*—  
Bermudez