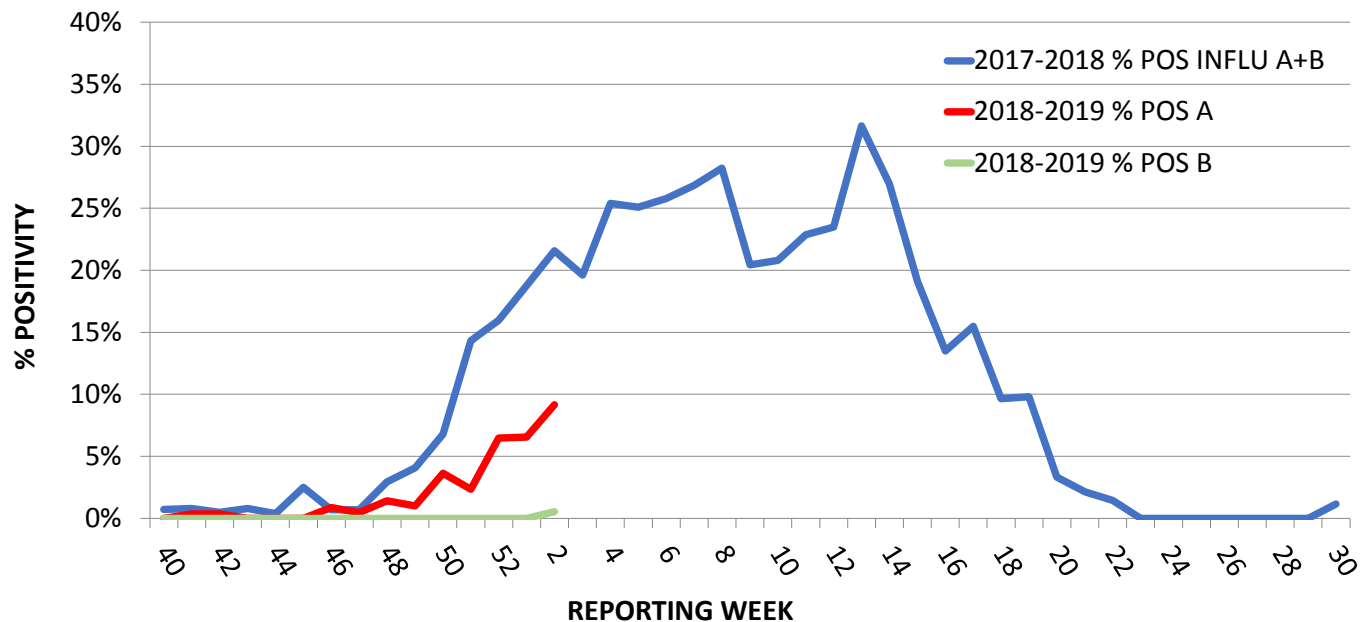


## WEEKLY RESPIRATORY SURVEILLANCE

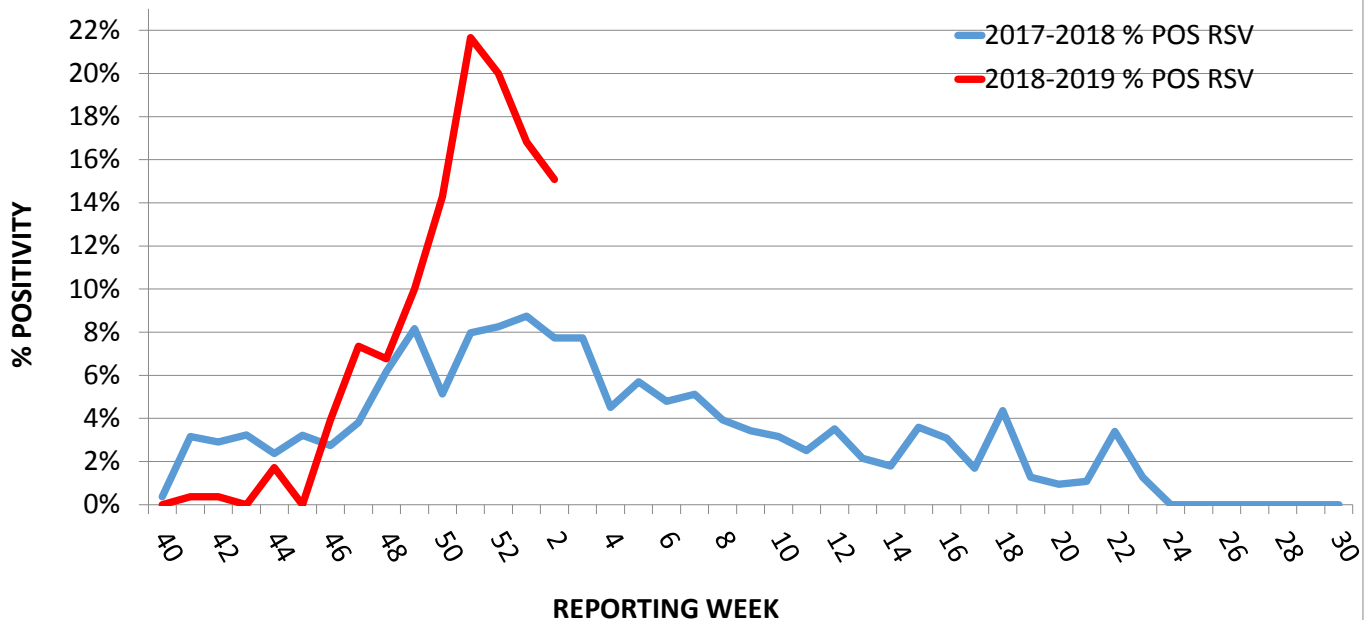
WEEK 02 ENDING JANUARY 12, 2019

For the week ending January 12, there were 557 respiratory samples submitted for Influenza A/B and RSV testing. RSV was detected in 84 samples for a 15.1% positivity. Influenza A was detected in 51 samples with a corresponding 9.2% positivity. Influenza B was detected in 3 samples with a corresponding 0.5% positivity. 31 samples were submitted for testing metapneumovirus, adenovirus and rhinovirus. 23 samples were submitted for parainfluenza virus testing.

### % POSITIVITY INFLUENZA A/B

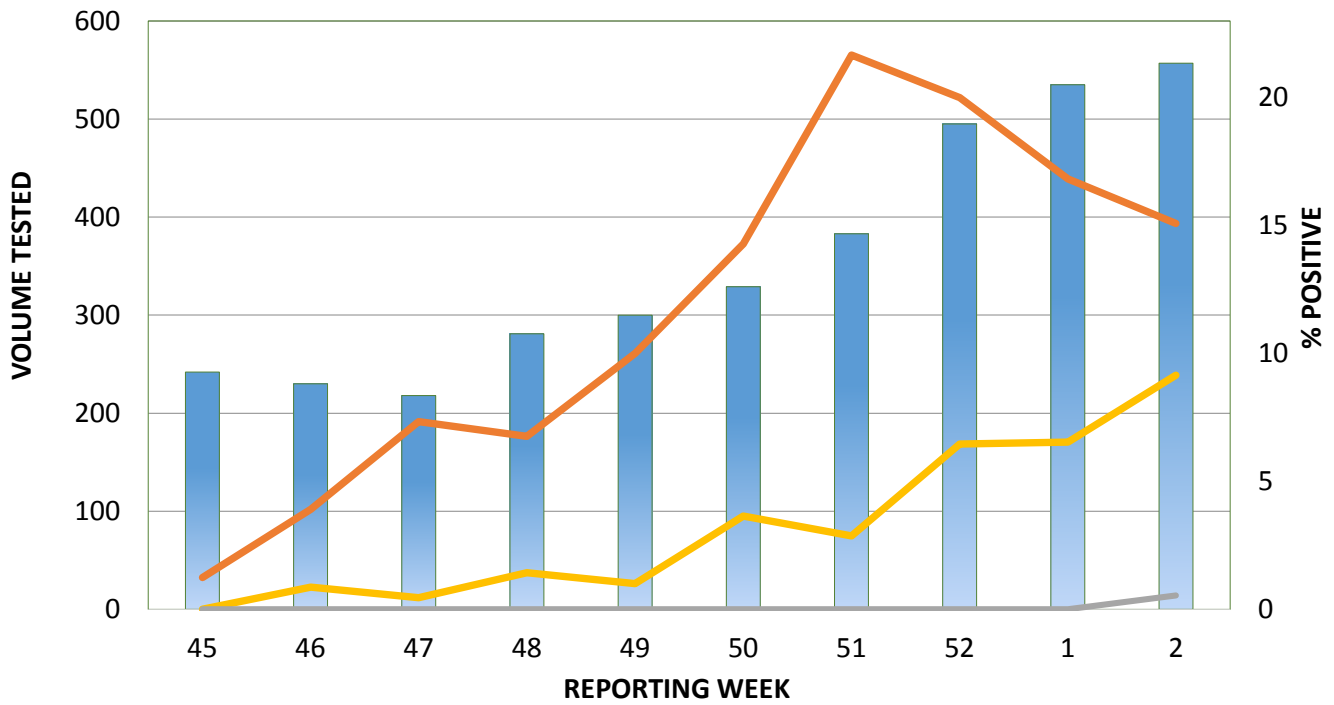


### % POSITIVITY RSV



# INFLUENZA A, B and RSV VOLUME TESTED AND % POSITIVE

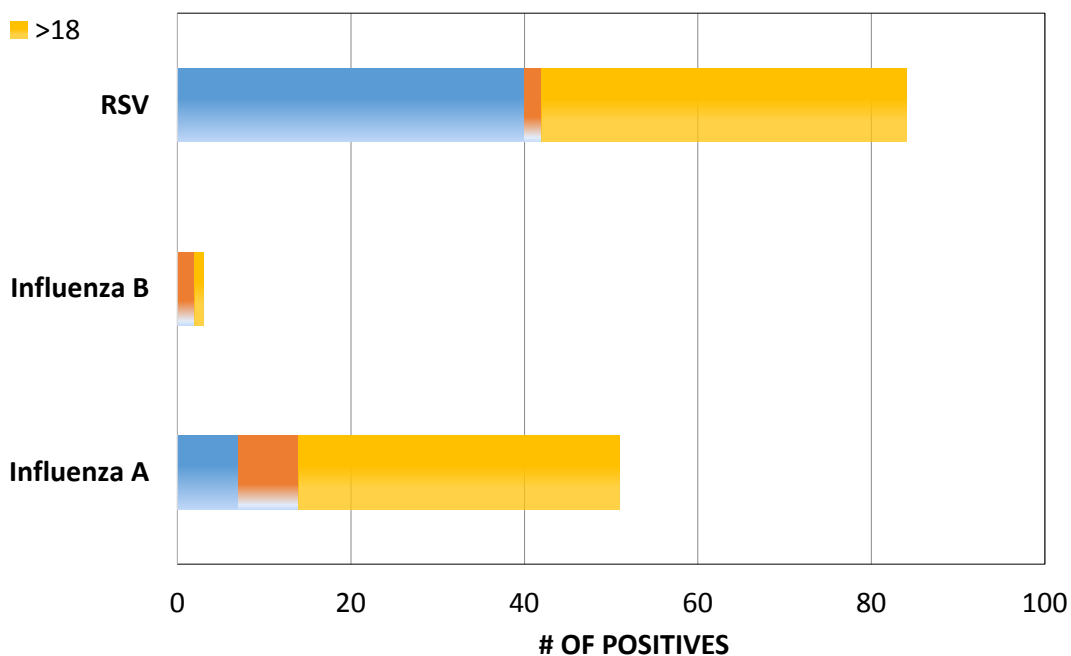
% POSITIVE INFLU A  
% POSITIVE INFLU B  
% POSITIVE RSV

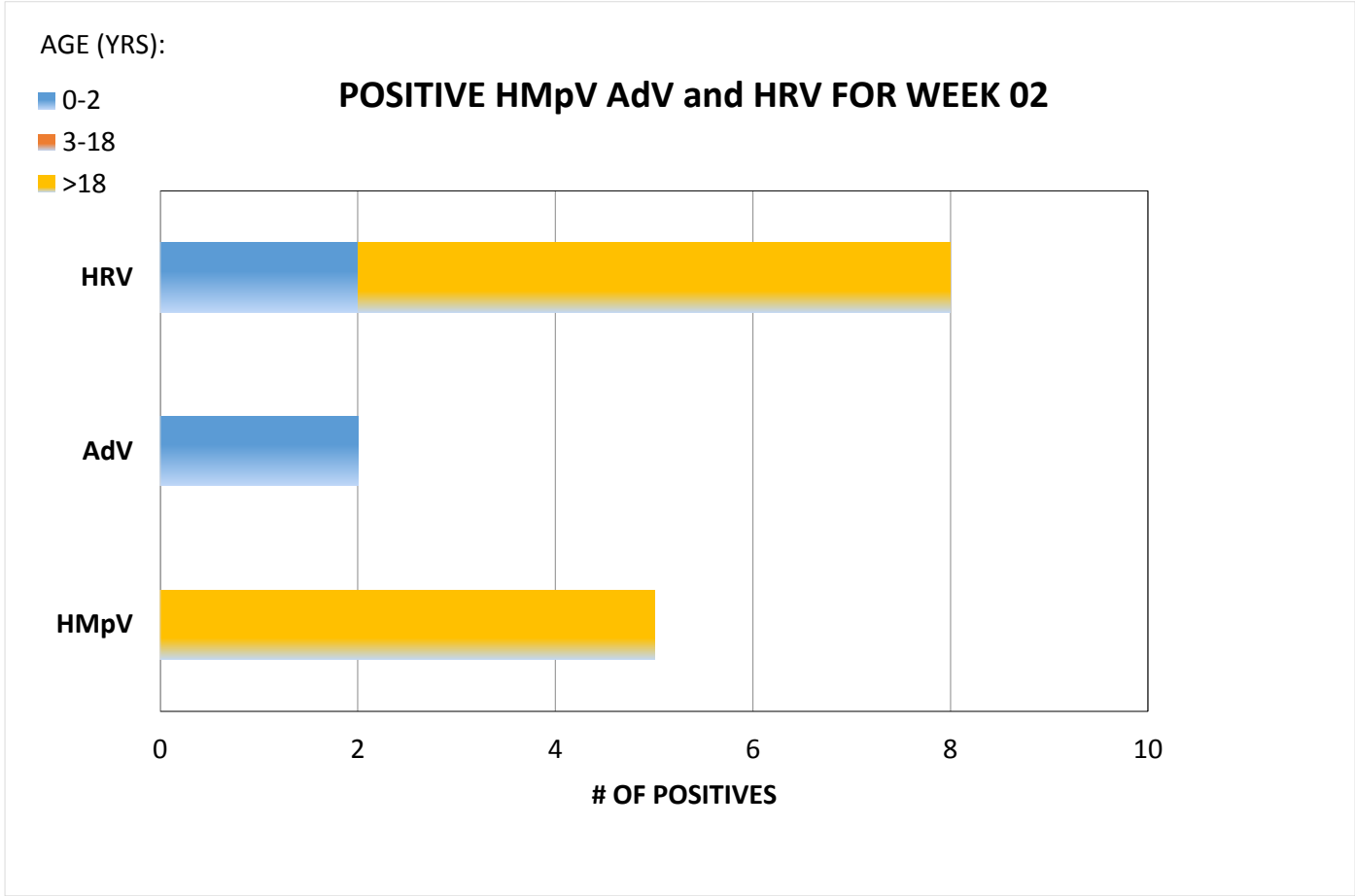
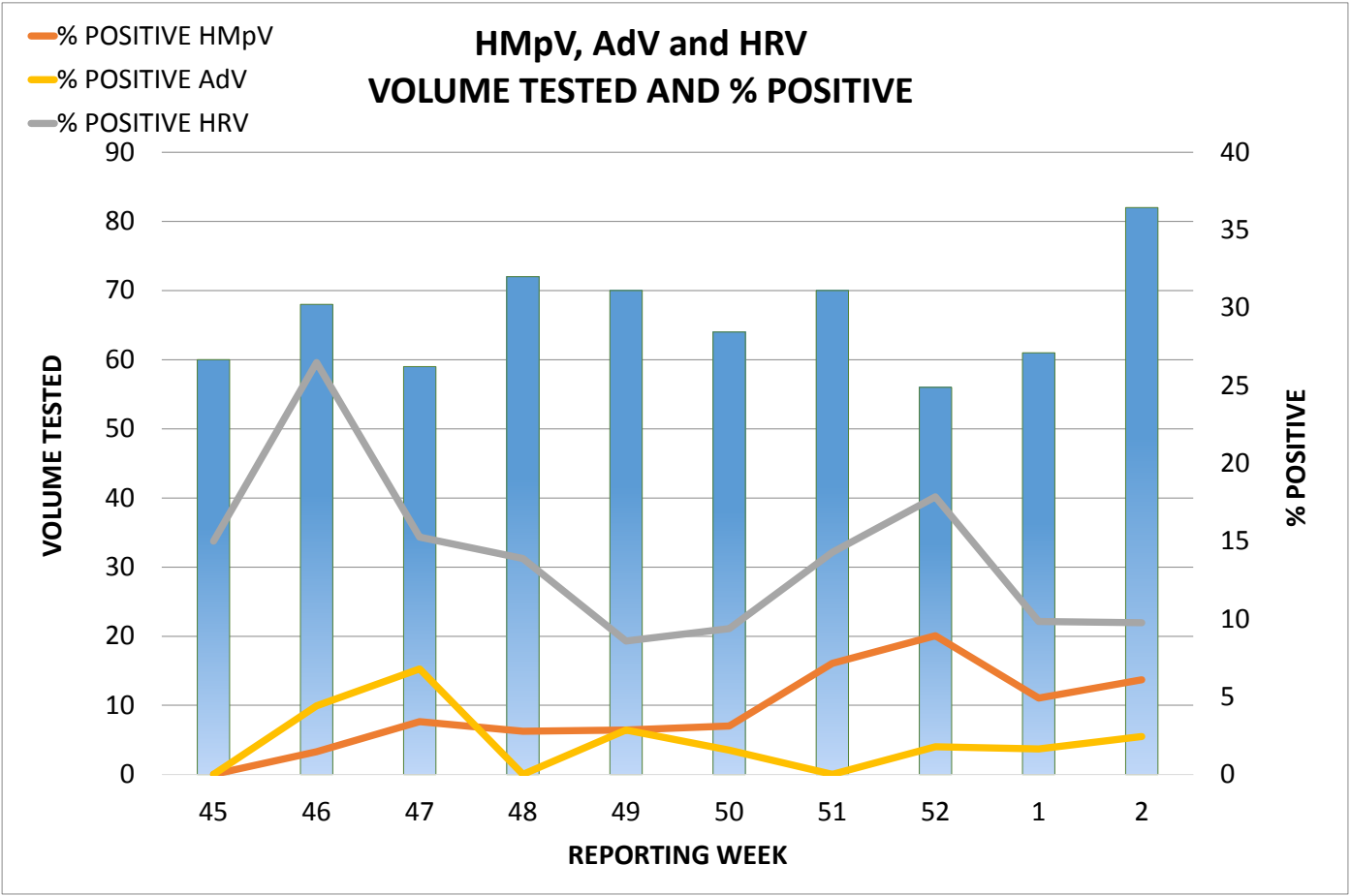


AGE (YRS):

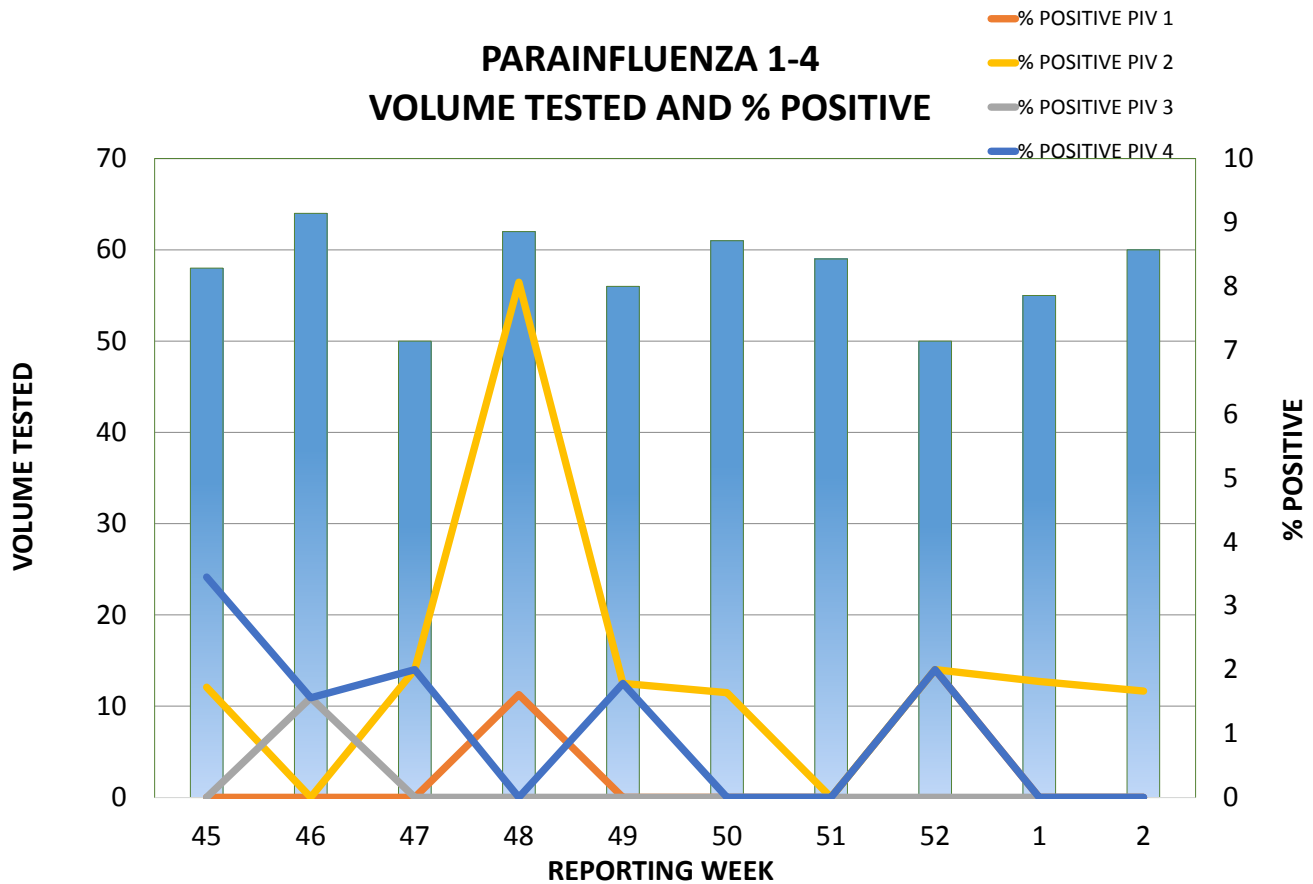
0-2  
3-18  
>18

## POSITIVE INFLU A/B and RSV FOR WEEK 02





## PARAINFLUENZA 1-4 VOLUME TESTED AND % POSITIVE



AGE (YRS):

- 0-2
- 3-18
- >18

## POSITIVE PARAINFLUENZA FOR WEEK 02

