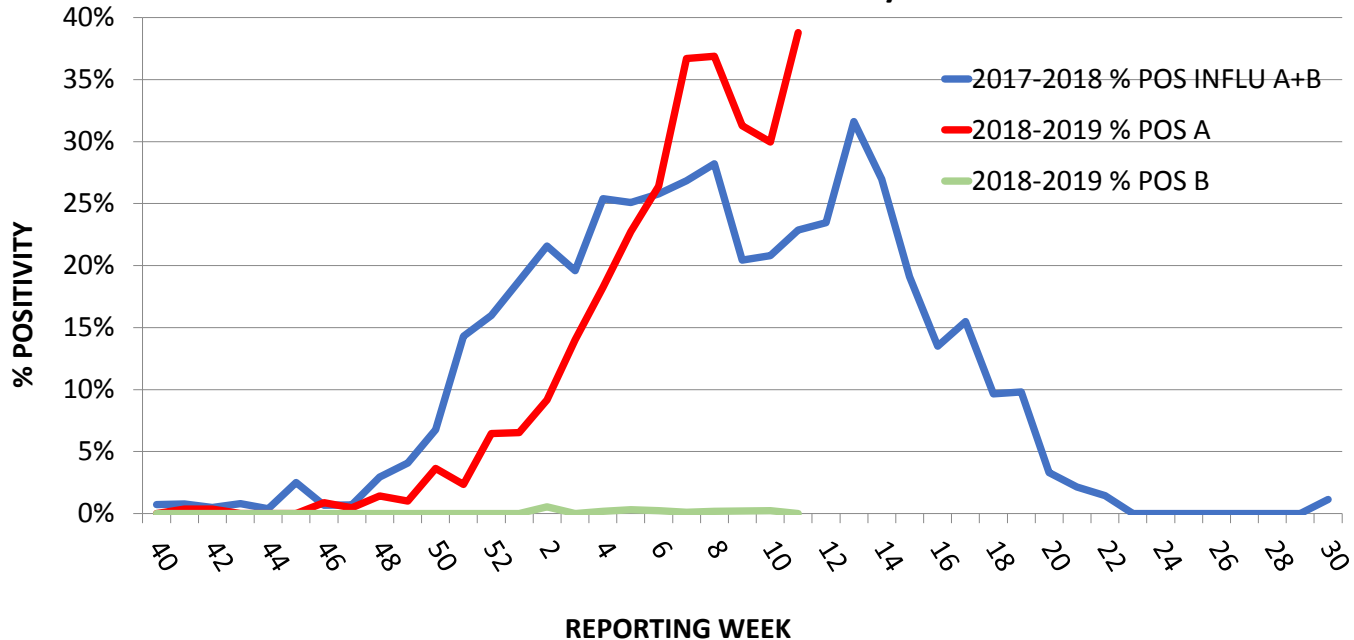


WEEKLY RESPIRATORY SURVEILLANCE

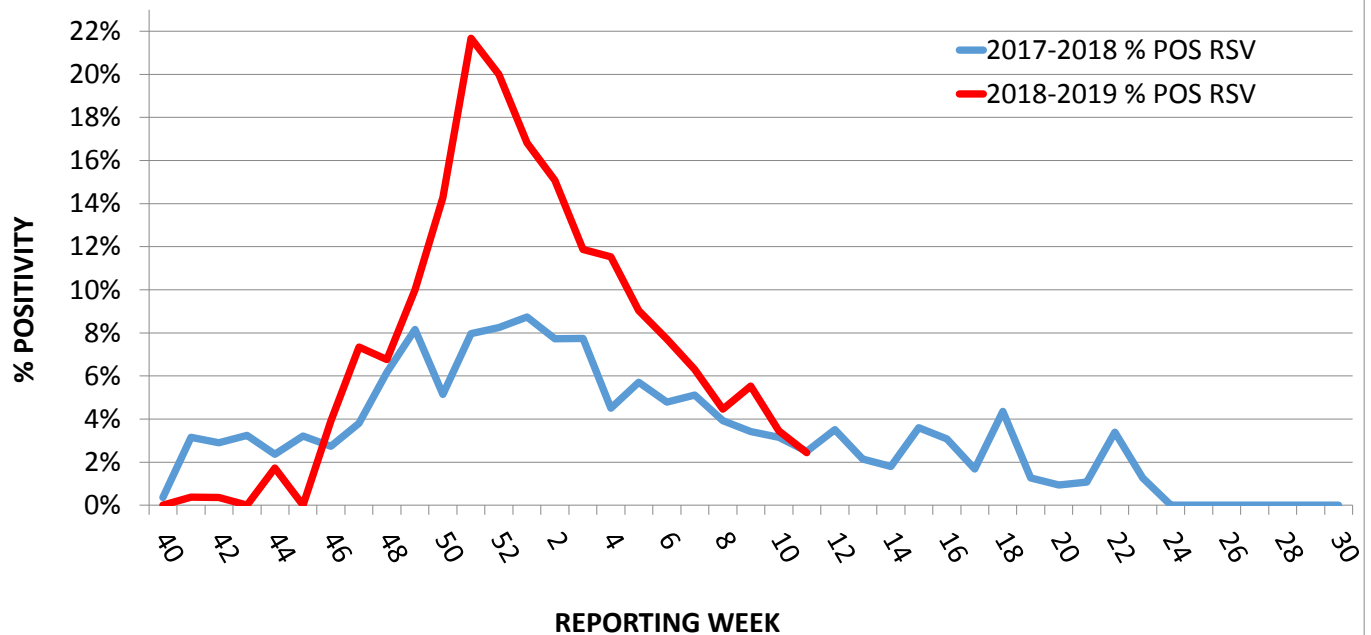
WEEK 11 ENDING MARCH 16, 2019

For the week ending March 16, there were 1,021 respiratory samples submitted for Influenza A/B and RSV testing. RSV was detected in 25 samples for a 2.4% positivity. Influenza A was detected in 396 samples with a corresponding 38.8% positivity. Influenza B was not detected in any samples. 55 samples were submitted for testing metapneumovirus, adenovirus and rhinovirus. 43 samples were submitted for parainfluenza virus testing.

% POSITIVITY INFLUENZA A/B

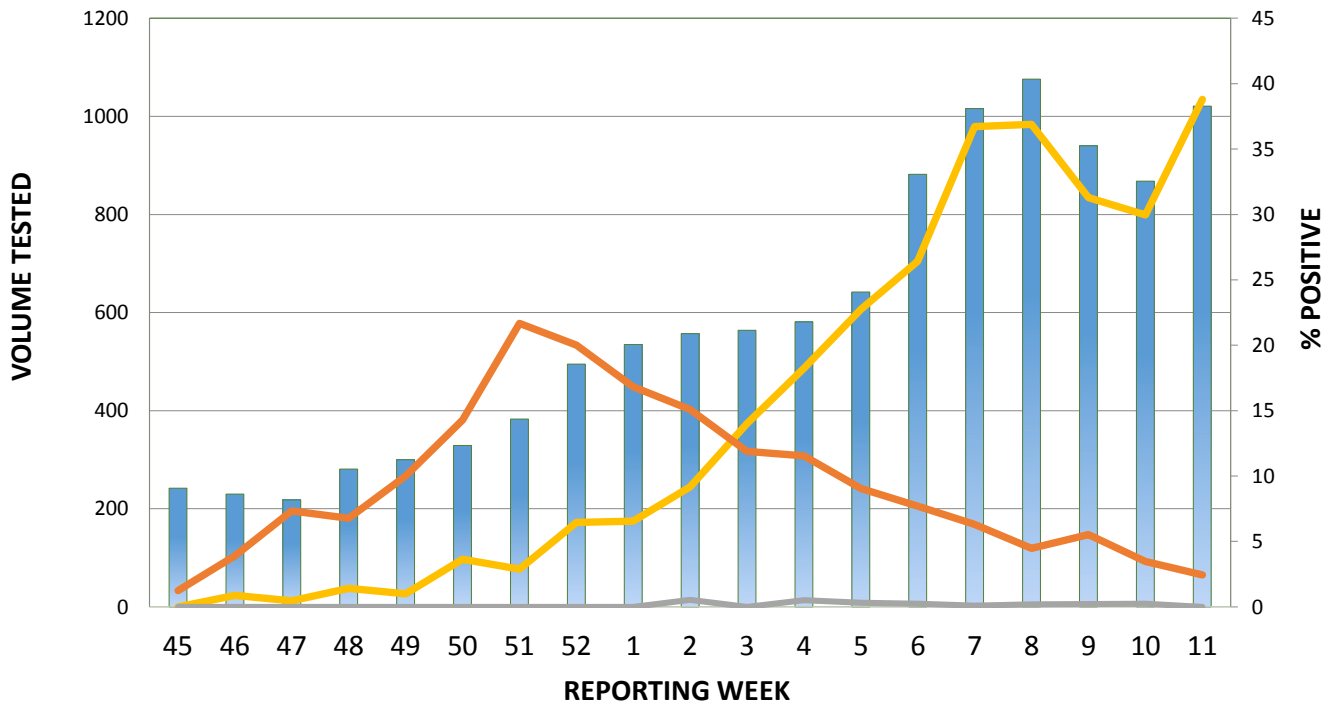


% POSITIVITY RSV



INFLUENZA A, B and RSV VOLUME TESTED AND % POSITIVE

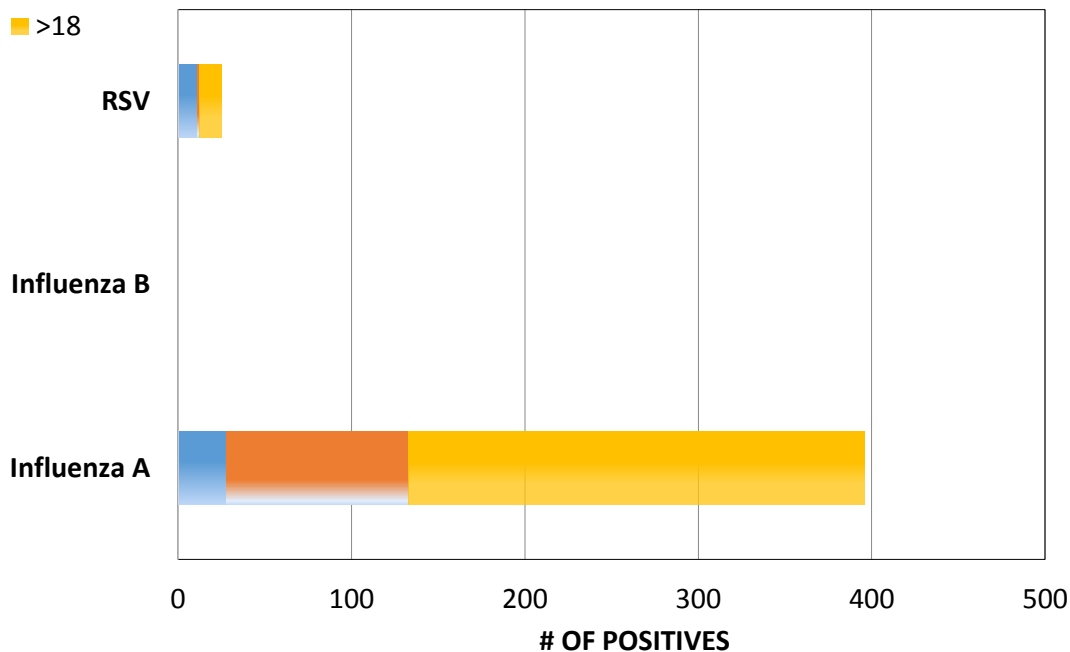
— % POSITIVE INFLU A
 — % POSITIVE INFLU B
 — % POSITIVE RSV

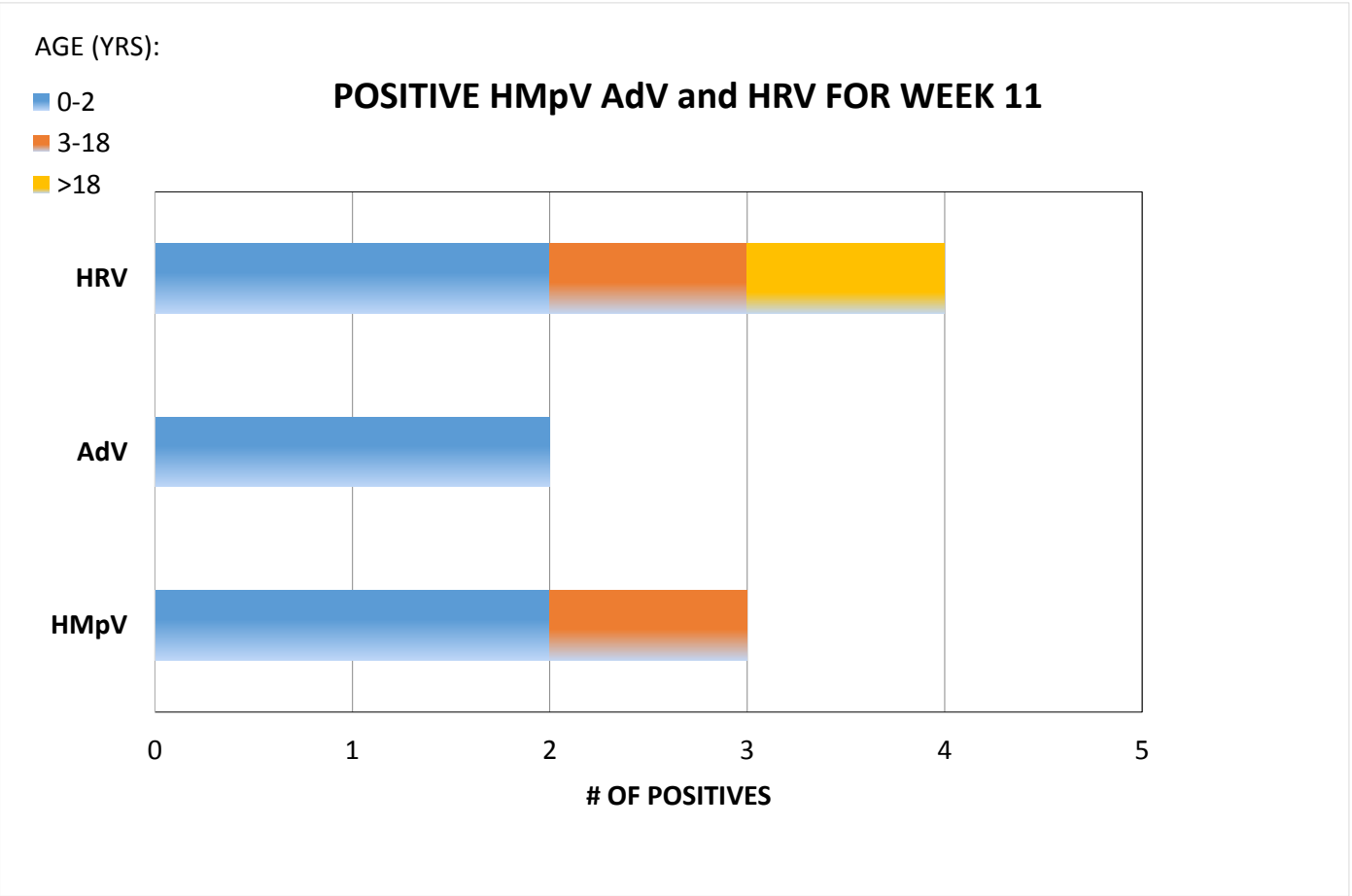
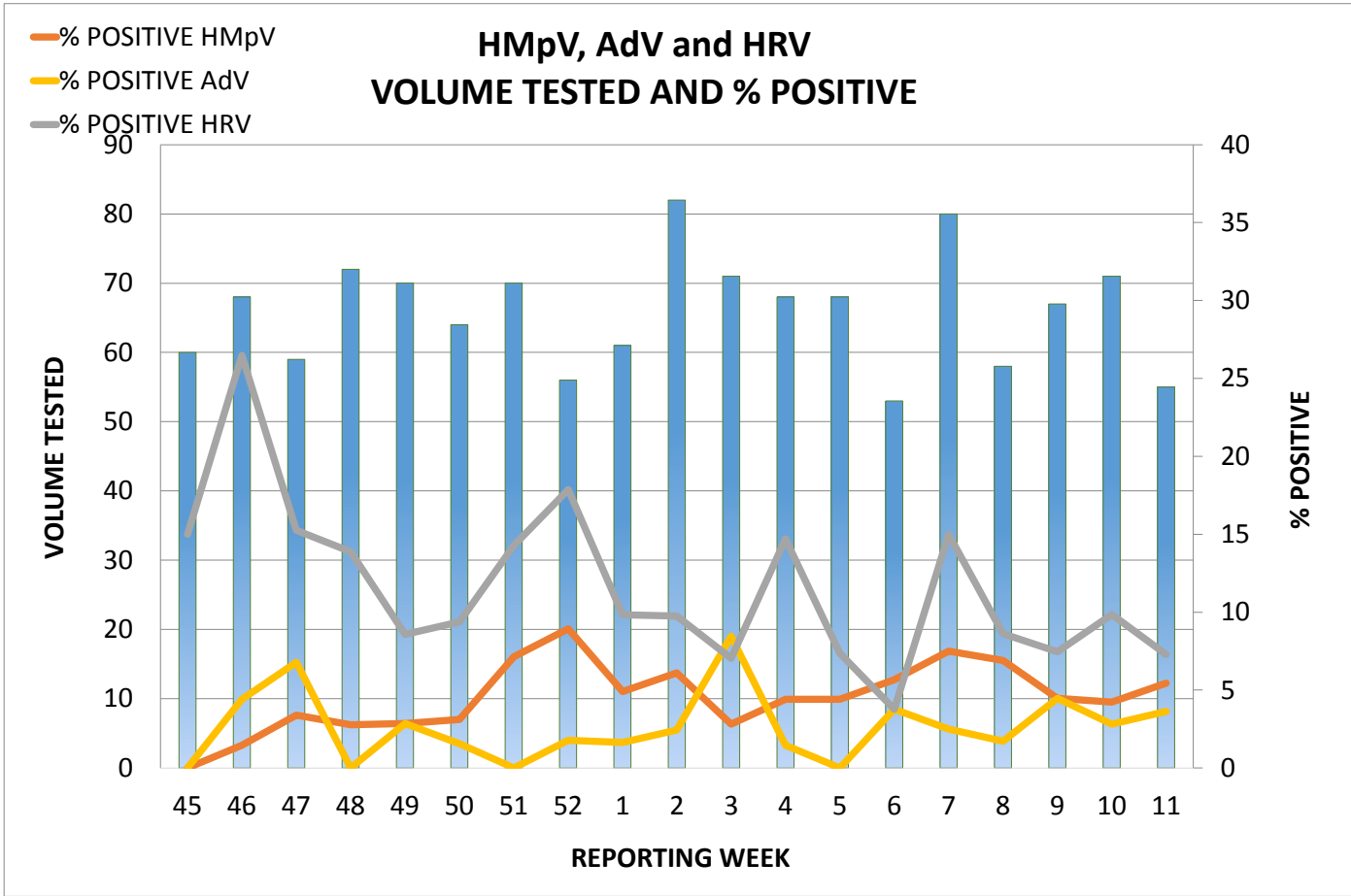


AGE (YRS):

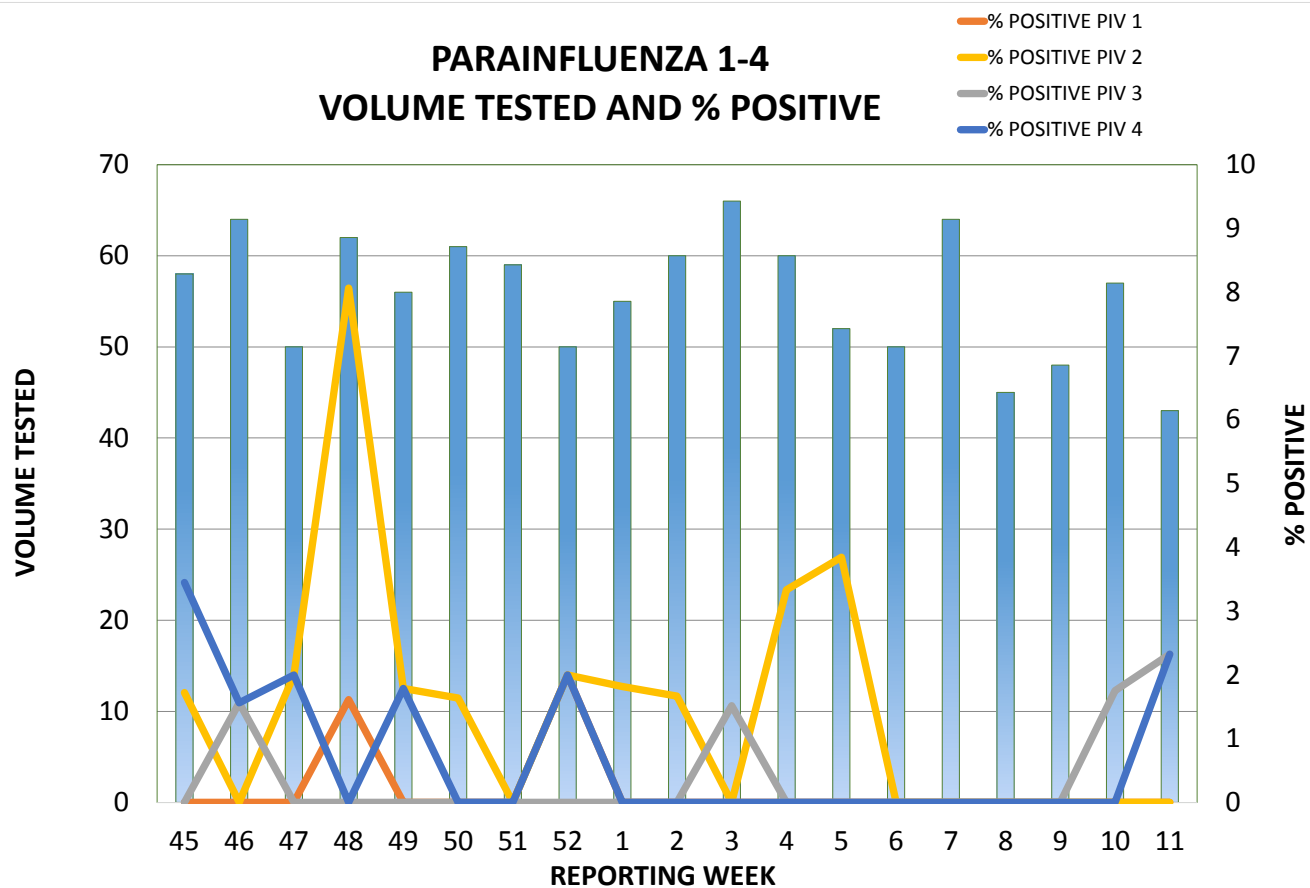
■ 0-2
 ■ 3-18
 ■ >18

POSITIVE INFLU A/B and RSV FOR WEEK 11





PARAINFLUENZA 1-4 VOLUME TESTED AND % POSITIVE



AGE (YRS):

- 0-2
- 3-18
- >18

POSITIVE PARAINFLUENZA FOR WEEK 11

