

March 2011



Emergency Medicine Research & Academic News



Announcements and Congratulations



Jeff Bazarian was interviewed by 13WHAM News March 9th regarding the monitoring of UR football players funded by a grant from the NFL. To read the story and watch video of the interview, visit the [13 WHAM website](#).

Congratulations to **Betsy Edwardson** for having two abstracts accepted to the Society of General Internal Medicine Annual Meeting. She is first author on abstract # 1 and second on abstract # 2.

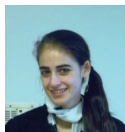
Abstract #1: Physicians dialogues with terminal lung cancer patients: Trends with shared decision making and patient friendly education

Abstract #2: Empathy, support, or blame regarding cigarette smoking from physicians caring for terminal lung cancer patients: "When you started, everyone smoked and it was cool"

Welcome to our new research staff:



Chanise Cyrus
Research Associate



Rina Polyakov
Research Associate



Courtney Diamond
Research Associate



Jake Taylor
Research Associate

Miscellaneous News

Clinical and Translational Sciences Building Ribbon Cutting and Educational Symposium Announced

On October 27, 2008 the University of Rochester Medical Center (URMC) broke ground on the Clinical and Translational Science Building (CTSB), a facility that will help accelerate scientific discoveries into new ways to understand, treat, prevent, and cure diseases. April 8, 2011 will mark the grand opening of the CTSB building, which will be the first of its kind to be constructed in the nation. A ribbon cutting ceremony is scheduled for 11am that morning, followed by tours of the building. Additionally, an educational symposium has been scheduled for the following Friday April 15, 2011. The symposium will focus on Applying Science to Benefit Healthcare Reform, and will feature special guest speaker Lawrence Tabak, DDS, PhD, the Principle Deputy Director of the National Institutes of Health., and former University of Rochester faculty member.

Emergency Medicine Researchers Moving to the CTSB

When the Clinical and Translational Sciences Building opens its doors in April, Emergency Medicine research will be a part of the team. EM Research Faculty and staff will be moving their offices from Corporate Woods to the second floor of the CTSB soon after the grand opening of the facility. This is an exciting opportunity for Emergency Medicine to be collocated with the majority of the clinical and translational researchers and research infrastructure available at the University.

Upcoming Events / Meetings:

March 14, 2011 3-5p
Research Consultation Clinic
Flaum Atrium

March 17, 2011 4-6p
"Creating Surveys"
Carol Diachun, MD &
Andria A. Mutrie
Louise Slaughter Room, 1-9555

March 21, 2011 5:45-7:30p
"Keeping it real: Creating and
Sustaining Authentic University/
Community Partnerships"
Cynthia Barnes-Boyd, RN MSN,
PhD, FAAN
Class of '62 Auditorium

March 22, 2011 4-5:30p
"Dealing with the Millennial
Student"
David R. Lambert, MD
Natapow Room 1-9545

March 28, 2011 9a-1p
"Mentoring for Academic
Success"
Thomas Pearson, MD PhD
HWH 1W-510

April 5, 2011 12:15-1:15p
"The Joy of Multicenter Trials"
Eric Holmboe, MD
Natapow Room 1-9545

April 19, 2011 4-6p
"Inter professional Education"
Andrew F. Wall, PhD & Madeline
H. Schmitt, PhD,RN
Natapow Room 1-9545

Upcoming Deadlines:

April 15, 2011
Grant Writing Workshop at SAEM
Registration Deadline

April 29, 2011
New York ACEP
Abstracts due for July Meeting

Click on event or deadline for
more information
(electronic version)

Department of Emergency Medicine
601 Elmwood Avenue, Box 655
Rochester, NY 14642
Phone: (585) 463-2970
Fax: (585) 473-3516
EMResearch@urmc.rochester.edu

Emergency Medicine Research & Academic News

Publications Click on citations for full text of published articles

*Perry JJ, Goindi R, Brehaut J, Taljaard M, **Schneider S**, Stiell I. Emergency physicians' management of transient ischemic attack and desired sensitivity of a clinical decision rule for stroke in three countries. *Canadian Journal of Emergency Physicians* 2011;13: 19-27

New Studies

Linda Spillane
Desiree Schroeder
Nina Allan

Medication reconciliation in the Emergency Department—The purpose of this study is to determine the frequency and accuracy with which patients presenting to the emergency department can list the current medications they are taking and/or confirm with certainty the accuracy of the most recent list of medications available for review in the EMR. The secondary objective is to identify those patients at high risk for not knowing their medication history.

OJ Sahler
(Pediatrics)

Screening for Adolescent Violence — Individuals invested in the Screening for Adolescent Violence (SAV) project include members from the interdisciplinary team of the Rochester Maternal and Child Health (MCH) Bureau Interdisciplinary Leadership Education in Adolescent Health (LEAH) Training program. Faculty and trainees from disciplines including social work, psychology, nutrition, nursing, and medicine will work together on this project. The team plans to discover if there is a lack of screening for violence within the community and to address this gap in services through providing quality improvement type education on the importance of screening in practices for youth violence within Monroe County.

Funding Opportunities Click on each grant sponsor for more information

Sponsor	Type	Deadline	Title/Description
Emergency Medicine Foundation	EMF/ENA R e s e a r c h Grant	4/1/2011	The Emergency Medicine Foundation and the Emergency Nurses Association (ENA) Foundation jointly award this grant to facilitate collaboration between the disciplines and to improve clinical research in emergency care. This grant is intended for physician and nurse researchers to combine their expertise to develop, plan, and implement clinical research in emergency care. The EMF/ENAF Directed Team Grant ED Overcrowding Research Award program awards one \$50,000 grant for research over a one year period.
Emergency Medicine Foundation	Rehydration R e s e a r c h Grant	4/1/2011	The Emergency Medicine Foundation endeavors 1) to promote research within the specialty of Emergency Medicine 2) to advance emergency medical care, and 3) to facilitate the academic growth and development of emergency medicine faculty and thereby invest in the future of the specialty of emergency medicine. This program is sponsored by Baxter Healthcare. The Baxter Directed Rehydration Grant Program awards support for a clinical research project. Applicants may apply for up to a total of \$50,000 for a one-year period. Both scientific review and awarding decisions will be made independent of the sponsor.
Emergency Medicine Foundation	Patient Safety Research	4/1/2011	This program is co-sponsored by the Emergency Medicine Patient Safety Foundation (EMPSF). The EMF/EMPSF Patient Safety Grant Program awards for research projects in health policy or health services research topics. Applicants may apply for up to a total of \$10,000 for a one year period. Both scientific review and awarding decisions will be made independent of the sponsor.
Emergency Medicine Foundation	Ultrasound R e s e a r c h Grant	4/1/2011	With the growth of emergency ultrasound, increased resources have been devoted to making point of care ultrasound available throughout the country in terms of capital dollars for equipment, person- hours for training and quality assurance and administrative time for image archiving, report generation and emergency ultrasound program infrastructure development. The goal of this research grant is to begin to fill these gaps in our knowledge base. Applicants may apply for up to a total of \$20,000 for a one-year period.