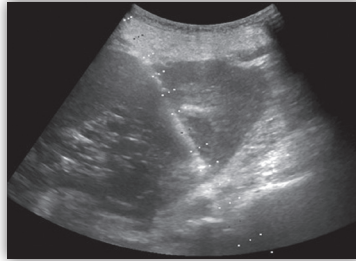
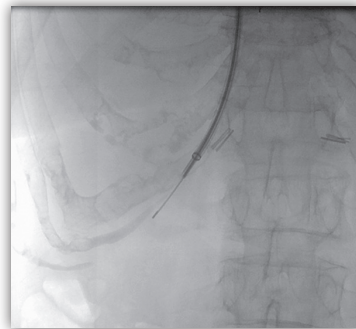


Liver Biopsy

An **ultrasound-guided biopsy** is a procedure that utilizes ultrasound imaging to insert a needle into the liver. The needle obtains a piece of tissue to be evaluated under a microscope.



A **transjugular liver biopsy** is a procedure that uses ultrasound imaging to insert a catheter into a vein in the neck which supplies blood to the liver. A needle is placed in the vein and a piece of tissue is obtained for evaluation.



Prior to scheduling a biopsy, your physician will take blood samples to be sure your blood is clotting properly. You must mention any medications you take, especially blood thinners, that affect blood clotting. If you are on Coumadin, blood work will be taken the afternoon before or the morning of the biopsy. One week prior to the procedure, you should stop taking aspirin, ibuprofen (e.g. Motrin and Advil), naprosyn (e.g. Aleve) and anticoagulants (e.g. Coumadin). Your primary care or referring physician will discuss any special arrangements needed for medications or for insulin management.

Note: Do not eat or drink for 6 hours prior to your arrival at the hospital. Routine medications may be taken with a sip of water up to 1 hour before arrival. **You must be accompanied to your appointment by a friend or relative who will take you home. You must also have someone with you the night of the procedure as well as the following day.**

You should arrive at the Imaging Department 45 minutes before your appointment. Please bring a list of all medications you take and give it to your nurse. If you wear eyeglasses and/or use hearing aids, take them with you to the procedure room as you will need to read and sign consent forms.

After the procedure, you will remain in recovery for up to 4 hours and be released from the hospital. You must not drive until 24 hours after the procedure. Do not do any heavy lifting or strenuous activity for 5 days, or travel outside the area for 7 days. You may not take aspirin, ibuprofen or naprosyn for 1 week following the biopsy. You should discuss resuming any medications, i.e., blood thinners, with your primary care or referring physician. You may return to work in 2 days if you have a sedentary (“desk”) job, or 5 days if you have a more strenuous job.

Your primary care and referring physicians will usually receive the report of the biopsy in 7-10 days. Your physician should then contact you with the results.

Abnormal

As with any type of biopsy procedure, there is a risk of bleeding, infection or damage to the liver or surrounding organs.

If you experience any of the following symptoms:

- Fever/chills
- Light headaches
- Increasing abdominal pain
- Nausea and/or vomiting

Immediately contact the Imaging Department Charge Nurse at (585) 273-2984 and go directly to the Emergency Room.

yoUR imaging. yoUR location. yoUR Radiologist.