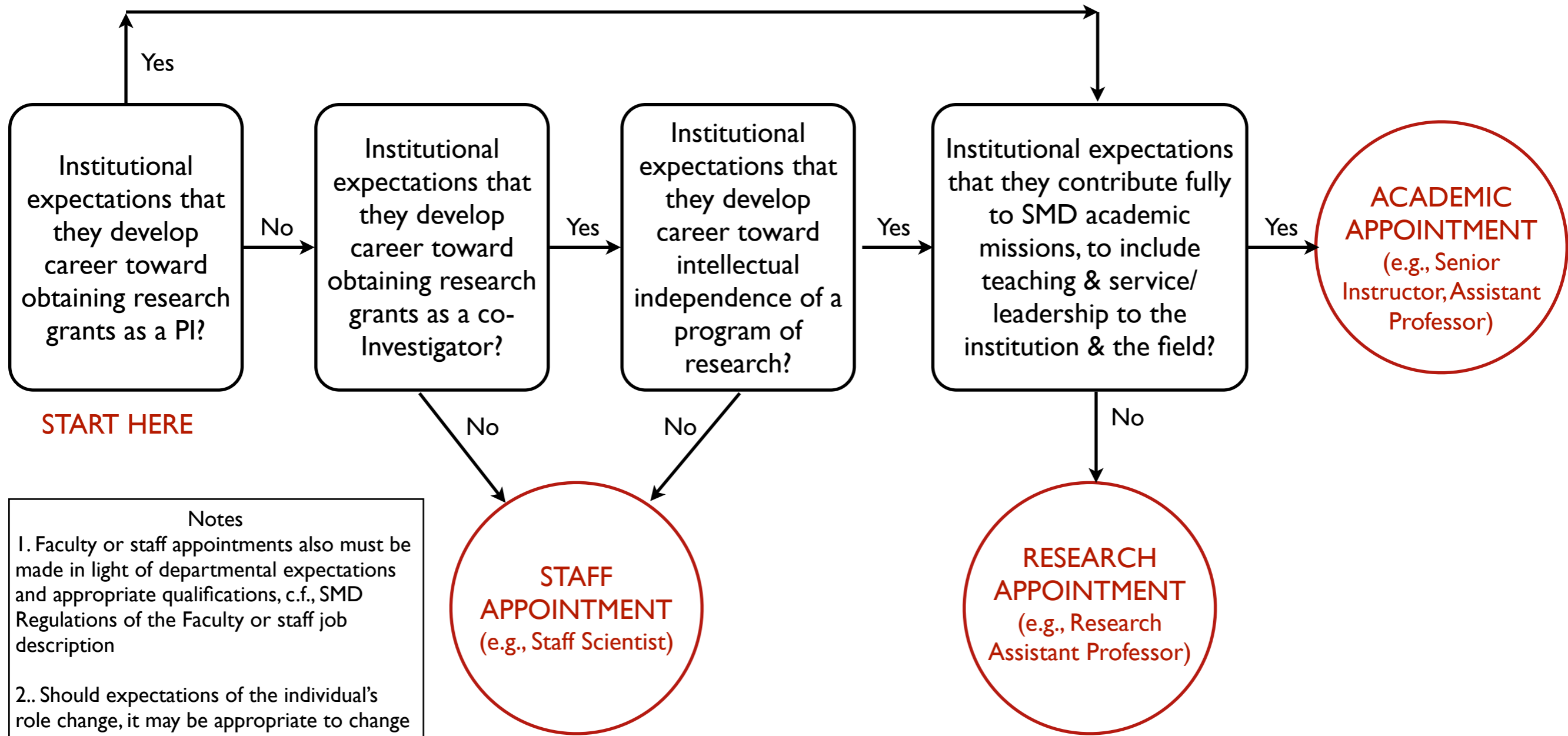


Decision Guide on Staff vs. Faculty Appointment for a scientist completing a postdoc



Notes

1. Faculty or staff appointments also must be made in light of departmental expectations and appropriate qualifications, c.f., SMD Regulations of the Faculty or staff job description
- 2.. Should expectations of the individual's role change, it may be appropriate to change them from one type of appointment to another, as consistent with their qualifications