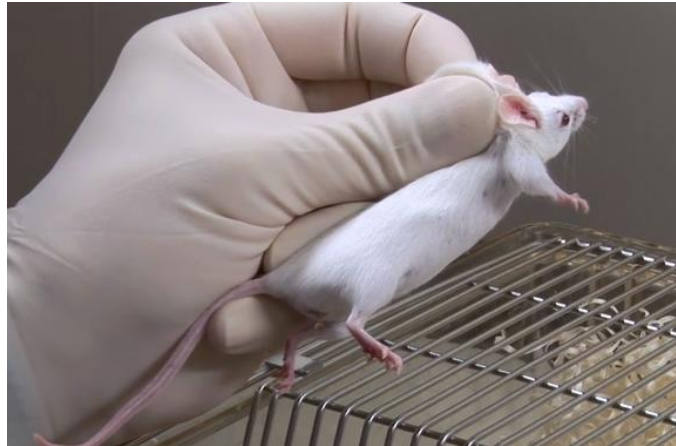


## Subcutaneous Injection in the Mouse

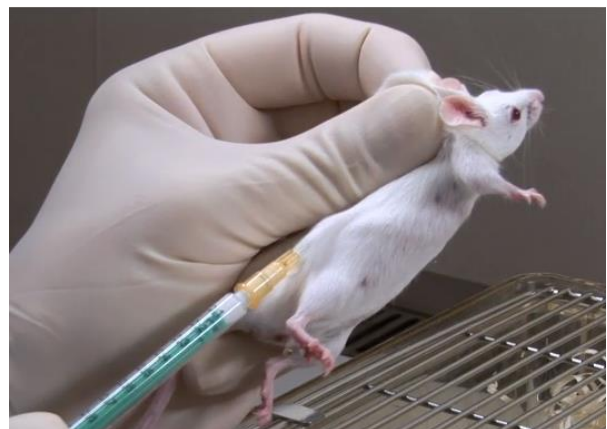
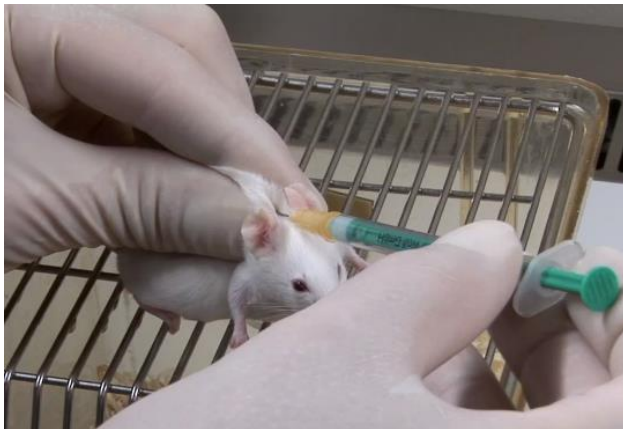
Restrain the mouse by pulling back gently on the mouse's tail using your dominant hand, then using the forefinger and thumb of your non-dominant hand to tent up the loose skin over the shoulders.



TIPS: Positioning your fingers just behind the ears will limit the mouse's head movements. For reactive mice, lifting the mouse off the wire bar lid and restraining its tail against your palm may help facilitate the injection.

Administer the injection in one of two ways:

1. **SCRUFF:** Inject into the loose skin over the neck. Using your dominant hand, direct the needle into the base of the skin tent to avoid needle stick injury.
2. **FLANK:** Holding the needle at a very shallow angle, direct it under the skin overlying the upper thigh and lower part of back & abdomen.



If you would like additional training on this technique free of charge, please contact DCM: ext 5-2651 or e-mail [DLAMTechs@URMC.rochester.edu](mailto:DLAMTechs@URMC.rochester.edu)