

Giving Back to the Deaf Community: National Center for Deaf Health Research

Jessica Cuculick, MSW, MS.SEd

Julianna Aggas, MS

Susan Demers, MS

Matt J. Starr, MPH

This PowerPoint Presentation was supported by Cooperative Agreement Number 5-U48-DP-000031-03 from the Centers for Disease Control and Prevention. Its contents are solely the responsibility of the authors and do not necessarily represent the official views of the Centers for Disease Control and Prevention.



**National Center for Deaf Health Research
Rochester Prevention Research Center**



Who are we?

Jess Cuculick, '98, '02

Assistant Professor, NTID Department of Liberal Studies
Vice Chair, Deaf Health Community Committee, NCDHR

Julianna Aggas, '95, '96

Rehabilitation Counselor, VESID
Chair, Deaf Health Community Committee, NCDHR

Susan Demers, '90, '03

Coordinator, NCDHR
Former Chair, Deaf Health Community Committee, NCDHR

Matt J. Starr, '79

Senior Instructor & Committee Chair, NCDHR



Health Disparities



White Americans



African Americans



Deaf Americans

Cancer	193.9 per 100,000	243.1 per 100,000	No data
Diabetes	23.0 per 100,000	49.2 per 100,000	No data
Infant Mortality	5.7 per 1,000 live births	13.3 per 1,000 live births	No data
Adult Immunization	70.2 %	52%	No data

Source: www.cdc.gov



National Center for Deaf Health Research
Rochester Prevention Research Center

UNIVERSITY OF
ROCHESTER
MEDICAL CENTER

What is NCDHR?

- Overview of NCDHR
- Why are we doing research within the Deaf community?
- Challenges
- Strengths



Deaf Health Community Committee

- Community-Based Participatory Research (CBPR)
 - ◆ A relatively new research methodology
- Involves the community
- Community act as advisors and experts
- Add DHCC responsibilities (from orientation)



What is Community-Based Participatory Research (CBPR)?

“ A collaborative process of research that involve researchers and community representatives in all phases of research.”



What does DHCC do?

- Provide community perspectives
- Participate in design of proposed research projects
- Interpret & prioritize research results
- Advocate for the community
- Promote the “cultural model”
- Recruit Deaf subjects
- Meets monthly



Community-Based Participatory Research (CBPR)



www.cdc.gov/prc



National Center for Deaf Health Research
Rochester Prevention Research Center

UNIVERSITY OF
ROCHESTER
MEDICAL CENTER

CDC Meeting



Atlanta, Georgia ▪ March 2008



National Center for Deaf Health Research
Rochester Prevention Research Center

UNIVERSITY OF
ROCHESTER
MEDICAL CENTER

Deaf Health Survey



CC



CC



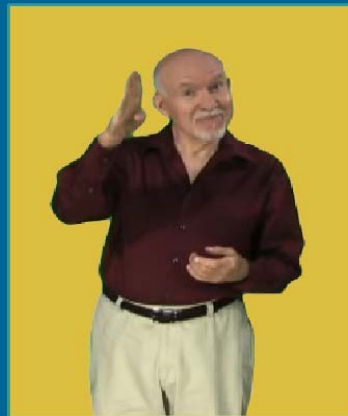
CC



CC



CC



CC

My name is Patrick. You can touch on the other signers. You can pick a different signer at any time. When you are done. Touch next.



Deaf Health Survey

Basic Demographics

STOP

☒ □ □ □ □ □ □

R
L
P
G
MaryBeth
D

B

You are a man. ☒

? Are you female or male?

A female

B male

Back Next



Why Give Back to the Deaf Community?

- Increased awareness
- Information dissemination
- Bottom to top approach
- Skills and expertise of Deaf people
- Leadership opportunities
- Career Advancement-add experience on resume

Community participation
benefits the Deaf community!!!!!!!!!!!!!!



Contact us at:

NCDHR

University of Rochester

PO Box 278990 ▪ Rochester, NY 14627-8990

(585) 758-7804 TTY ▪ (585) 276-2122 VP

(585) 424-1467 FAX

ncdhr@urmc.rochester.edu

www.urmc.edu/ncdhr

Office: 120 Corporate Woods ▪ Suite 350

Rochester, NY 14623



Questions?



National Center for Deaf Health Research
Rochester Prevention Research Center



If there is no struggle,
there is no progress.

Frederick Douglass

US abolitionist (1817 - 1895)



National Center for Deaf Health Research
Rochester Prevention Research Center

UNIVERSITY OF
ROCHESTER
MEDICAL CENTER